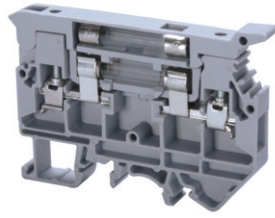


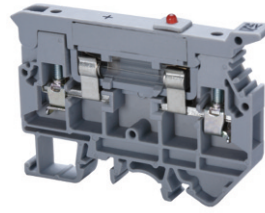
CAFL4U(L) is equipped with a LED for blown fuse indication. CAFL4U(N) is equipped with a neon bulb for same application.

CAFL4U



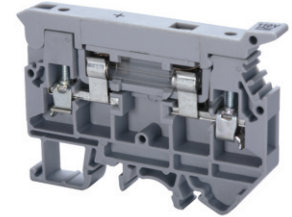
† Fuse not included.

CAFL4U(L)*



† Fuse not included.

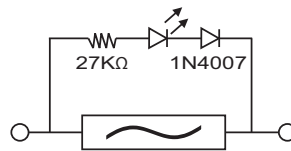
CAFL4U(N)



† Fuse not included.

Terminal Width	9 mm			9 mm			9 mm		
Height x Length	50 x 72 mm			50 x 72 mm			50 x 72 mm		
Stripping Length	9.5 mm			9.5 mm			9.5 mm		
Insulation Material	Polyamide 6.6			Polyamide 6.6			Polyamide 6.6		
Type of Connection	2 screw clamps			2 screw clamps			2 screw clamps		
LED/Neon Voltage				24V AC/DC, 48V AC/DC, 110V AC/DC, 220V AC, 300V AC			110-220V AC/DC, 300V AC		
Type of Fuse Used	Ø1/4x1 in., Ø1/4x1 1/4 in.			Ø1/4x1 in., Ø1/4x1 1/4 in.			Ø1/4x1 in., Ø1/4x1 1/4 in.		
Approvals									
Wire Range	22-10 AWG	0.2-4 sq.mm	22-10 AWG	22-10 AWG	0.2-4 sq.mm	22-10 AWG	22-10 AWG	0.2-4 sq.mm	22-10 AWG
Voltage Rating	600 V	1000 V	600 V	600 V	1000 V	600 V	600 V	1000 V	600 V
Current Rating	16 A	6.3 A	16 A	16 A	6.3 A	16 A	16 A	6.3 A	16 A
Torque	7 lb-in	0.5 Nm	7 lb-in	7 lb-in	0.5 Nm	7 lb-in	7 lb-in	0.5 Nm	7 lb-in
Other Approvals									

	Cat. No.	Std. Pk.	Cat. No.	Std. Pk.	Cat. No.	Std. Pk.
Terminal Block	CAFL4U	25	CAFL4U(L)*	25	CAFL4U(N)	25
End Plate	EPCAFL4U	50	EPCAFL4U	50	EPCAFL4U	50
DIN Rail for ordering information refer to pages 90-91						
End Stop for ordering information refer to page 92	CA702 CA802	50 50	CA702 CA802	50 50	CA702 CA802	50 50
External Jumper	2 pole CA716/2 3 pole CA716/3 4 pole CA716/4 10 pole CA716/10	50 50 50 25	2 pole CA716/2 3 pole CA716/3 4 pole CA716/4 10 pole CA716/10	100 50 50 20	2 pole CA716/2 3 pole CA716/3 4 pole CA716/4 10 pole CA716/10	100 50 50 20
Marking Tags	MT9	100	MT9	100	MT9	100



LED Circuit for offline indication in CAFL4UL24V