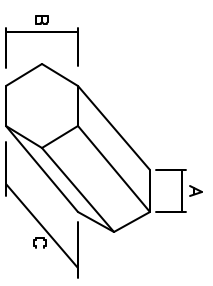
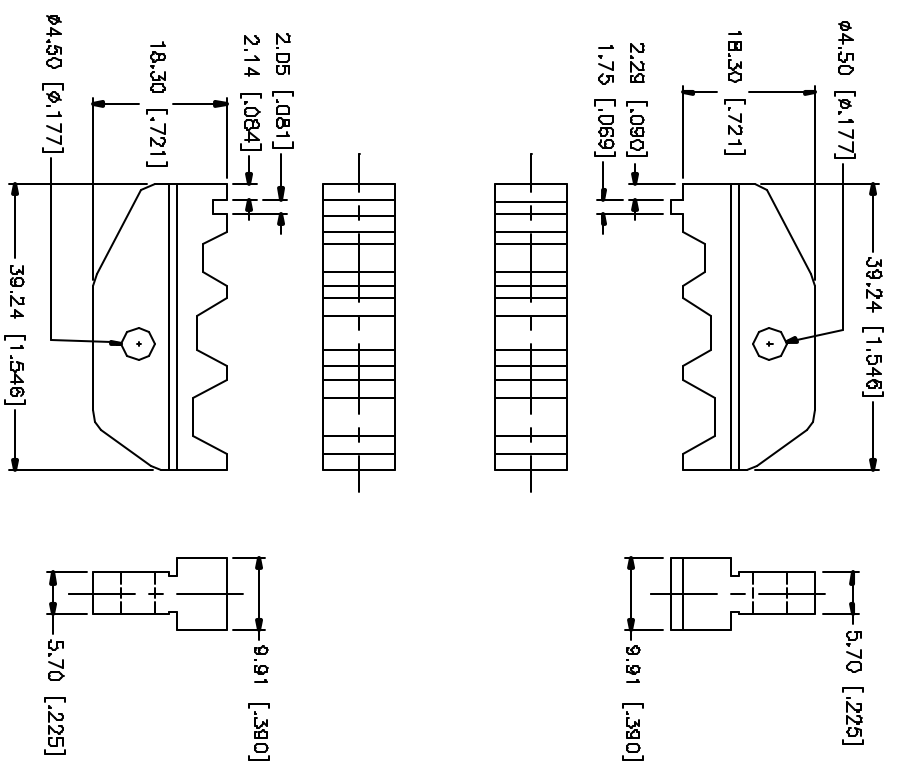
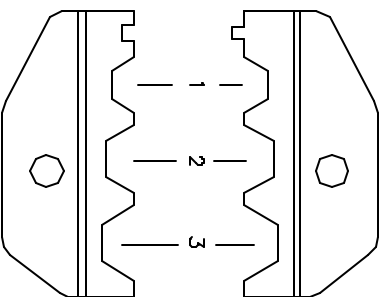


REV.	DATE	DESCRIPTION
A	08/31/04	UPDATE DRAWING FORMAT



	A	B	C
1	3.73 [.147]	6.46 [.255]	9.91 [.390]
2	4.69 [.185]	8.13 [.320]	9.91 [.390]
3	5.13 [.202]	8.88 [.350]	9.91 [.390]
4			

REV	DESCRIPTION	MATERIAL	FINISH	QTY	DO NOT SCALE DRAWING	APPROVALS	DATE	PART NO.	DWG. NO.	REV	SIZE	SCALE
B								47-20026	47-20026.DWG	A	A	NA
7												
6												
5												
4												
3												
2	DIE BODY	CAST STEEL	BLK. OXIDE									
1												

Amphenol Connex

CRIMP DIE SET

47-20026

UNLESS OTHERWISE SPECIFIED DIMENSIONS ARE IN MILLIMETERS. DIMENSIONS IN [] ARE IN INCHES AND THE OTHER DIMENSIONS ONLY. DIMENSIONS FOR ALL DIMENSIONS ARE: A - 0.25 - 0.30mm ± 0.20mm B - 30mm ± 0.40mm C - 120mm ± 0.50mm DIMENSIONS SPECIFIED TO DIMENSIONS FROM INCHES ARE: .020 - .315 = ± 0.007* .315 - 1.180 = ± 0.015* 1.180 - 4.724 = ± 0.020*

DWG FILE C:/MISC/47-20026.DWG
 APPROVALS C.R.S.
 DATE 08/31/04
 CHECKED
 ISSUED
 SHEET 1 OF 1