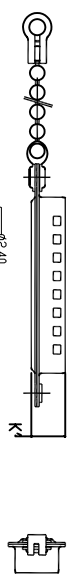
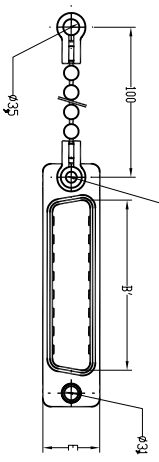


This document is the property of Amphenol Corporation and is delivered on the express condition that it is not to be distributed, reproduced or used, in whole or in part, without the prior consent of Amphenol Corporation. Amphenol Corporation will not be held liable for any errors or omissions in this document or for any information in this document.

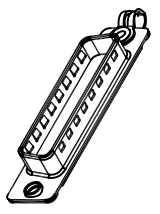
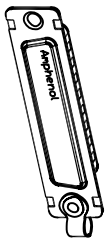


Flat MALE dust cover with Chain, for use with FEMALE connector

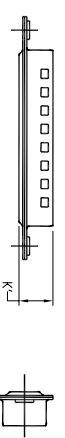
Part number



09 contacts or shell size E =L17D4K630 09
15 contacts or shell size A =L17D4K630 15
25 contacts or shell size B =L17D4K630 25
37 contacts or shell size C =L17D4K630 37
50 contacts or shell size D =L17D4K630 50

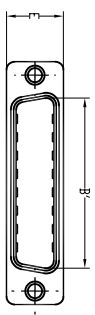


REVISITONS		DATE	APPROVED
SM	EON		
A		26/02/07	

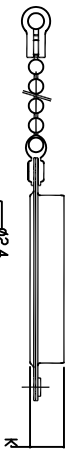
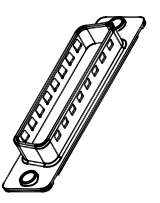
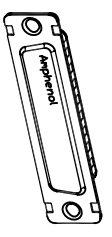


Flat MALE dust cover with Chain, for use with FEMALE connector

Part number

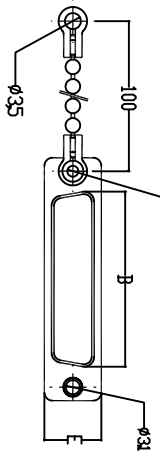


09 contacts or shell size E =L17D4K630 10
15 contacts or shell size A =L17D4K630 16
25 contacts or shell size B =L17D4K630 26
37 contacts or shell size C =L17D4K630 38
50 contacts or shell size D =L17D4K630 51

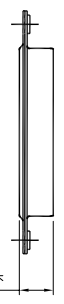
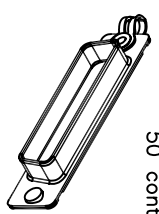
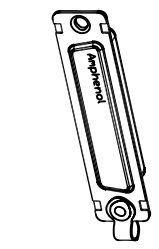


Flat FEMALE dust cover with Chain, for use with MALE connector

Part number

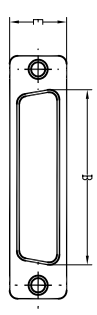


09 contacts or shell size E =L17D4K631 09
15 contacts or shell size A =L17D4K631 15
25 contacts or shell size B =L17D4K631 25
37 contacts or shell size C =L17D4K631 37
50 contacts or shell size D =L17D4K631 50

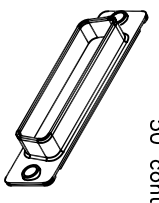
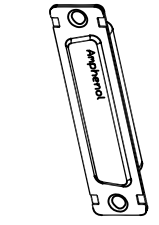


Flat FEMALE dust cover with Chain, for use with MALE connector

Part number



09 contacts or shell size E =L17D4K631 10
15 contacts or shell size A =L17D4K631 16
25 contacts or shell size B =L17D4K631 26
37 contacts or shell size C =L17D4K631 38
50 contacts or shell size D =L17D4K631 51



Shell = steel with tin plating

Size	B'	B	K'	K	E
E	16,8	16,4	7,6	7,9	12,4
A	25,1	24,8	7,6	7,9	12,4
B	38,8	38,5	7,6	7,9	12,4
C	55,3	54,9	7,6	7,9	12,4
D	52,7	52,5	7,6	7,9	15,2

DIMENSIONS SPECIFIED		APPROVAL		DATE	
TOLERANCES	U.S.	DRAWN	DATE	CHECKED	DATE
	METRIC	1/16	16/03/07	1/16	16/03/07
		CHECKED	16/03/07	CHECKED	16/03/07
SURFACE FINISH		DRAWING FILE :			
REMOVE SHARP EDGES		ANGLE OF PROJECTION			
DIMENSIONS		SIZE: DRAWING NO.			
TOLERANCES		SCALE: NONE			
FINISH		SHEET 1 OF 1			
MATERIAL		REV. A			

Amphenol
Accessory, Dust Cover