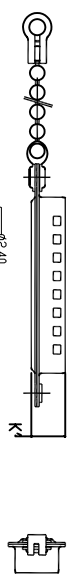
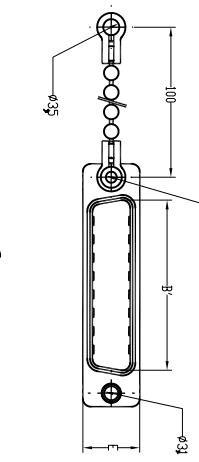


This document is the property of Amphenol Corporation and is loaned on the express condition that it is not to be duplicated, reproduced or used, in whole or in part, for any purpose other than that for which it was loaned. Amphenol Corporation assumes no liability for any errors or omissions in this document. Amphenol Corporation will not be held responsible for any damage or loss of data, or for any delay in service, or for any other consequences, arising from the use of this document. Amphenol Corporation will not be held responsible for any damage or loss of data, or for any delay in service, or for any other consequences, arising from the use of this document.

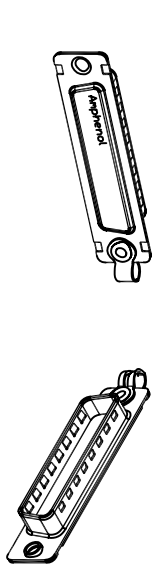


Flat MALE dust cover with Chain, for use with FEMALE connector

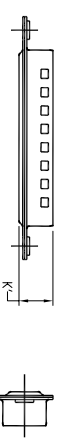
Part number



- 09 contacts or shell size E = L17D4K630 09
- 15 contacts or shell size A = L17D4K630 15
- 25 contacts or shell size B = L17D4K630 25
- 37 contacts or shell size C = L17D4K630 37
- 50 contacts or shell size D = L17D4K630 50

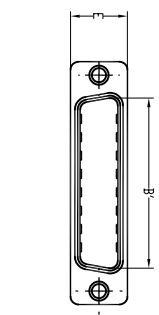


REVISIONS		DATE	APPROVED
1	DESCRIPTION	26/02/07	
SM	EON		
A			

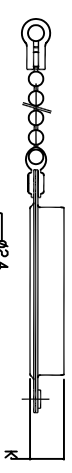


Flat MALE dust cover with Chain, for use with FEMALE connector

Part number

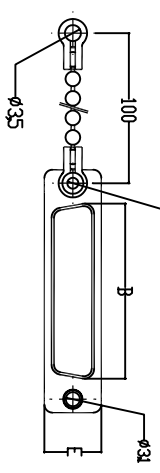


- 09 contacts or shell size E = L17D4K630 10
- 15 contacts or shell size A = L17D4K630 16
- 25 contacts or shell size B = L17D4K630 26
- 37 contacts or shell size C = L17D4K630 38
- 50 contacts or shell size D = L17D4K630 51

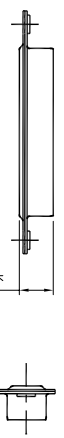
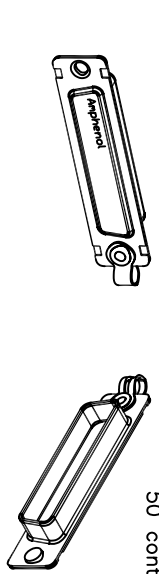


Flat FEMALE dust cover with Chain, for use with MALE connector

Part number

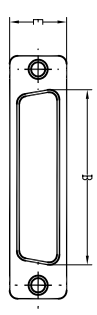


- 09 contacts or shell size E = L17D4K631 09
- 15 contacts or shell size A = L17D4K631 15
- 25 contacts or shell size B = L17D4K631 25
- 37 contacts or shell size C = L17D4K631 37
- 50 contacts or shell size D = L17D4K631 50



Flat FEMALE dust cover with Chain, for use with MALE connector

Part number



- 09 contacts or shell size E = L17D4K631 10
- 15 contacts or shell size A = L17D4K631 16
- 25 contacts or shell size B = L17D4K631 26
- 37 contacts or shell size C = L17D4K631 38
- 50 contacts or shell size D = L17D4K631 51



Shell = steel with tin plating

Size	B'	B	K'	K	E
E	16,8	16,4	7,6	7,9	12,4
A	25,1	24,8	7,6	7,9	12,4
B	38,8	38,5	7,6	7,9	12,4
C	55,3	54,9	7,6	7,9	12,4
D	52,7	52,5	7,6	7,9	15,2

UNIENGS OTHERISE SPECIFIED TOLERANCES U.S. METRIC X +/- 0.50 XX +/- 0.30 XXX +/- 0.20 DIMENSIONS +/- 0.25 ANGLES +/- 0.25 REMOVE SHARP EDGES DIMENSIONS IN PARENTHESES AND FINISHES THRESHOLD FINISH METRIC		APPROVAL DRAWN IAE Bmg CHECKED Swam DATE 16/03/07 DATE 16/03/07	TITLE Accessory, Dust Cover SIZE: DRAWING NO. C L17D4K631XXX SCALE: NONE SHEET 1 OF 1
UNLESS OTHERWISE SPECIFIED TOLERANCES U.S. METRIC X +/- 0.50 XX +/- 0.30 XXX +/- 0.20 DIMENSIONS +/- 0.25 ANGLES +/- 0.25 REMOVE SHARP EDGES DIMENSIONS IN PARENTHESES AND FINISHES THRESHOLD FINISH METRIC		APPROVAL DRAWN IAE Bmg CHECKED Swam DATE 16/03/07 DATE 16/03/07	TITLE Accessory, Dust Cover SIZE: DRAWING NO. C L17D4K631XXX SCALE: NONE SHEET 1 OF 1