

RADLOK™

Utilizing Amphenol's latest R4 RADSOK® Technology, our RADLOK™ product line was designed to be compact and robust.

Power Interconnect products in today's market often require additional mounting hardware (e.g. washers, clamps, bolts, nuts, etc.) making them prone to costly labor expenses for installation and routine maintenance.

Paired with Amphenol's RADLOK™ PIN, the single finger operation lock feature allows end users to connect any power distribution/storage system in a quick and secure manner.

The RADLOK™ product line is the answer to industries where a custom, reliable, easy to install, rugged, and cost effective solution is required.

Features:

- Voltage Rating: 1000V
- Current Rating: 70A - 400A
- Tool-Free Mechanical Locking
- High cycle durability (500 mating cycles)
- RoHS compliant
- Available in Black, Red, Orange (custom colors available upon request)



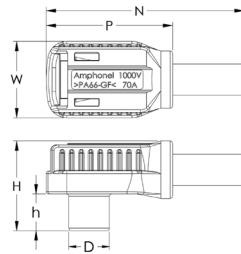
Dimensions

RADLOK™ Connector (Tubular Version)

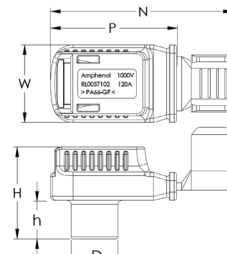
RADLOK™ Size (mm)	W	N	H	h	D	P
3.6	15.5	38.0	18.3	7.3	8.1	27.0
5.7	18.5	47.7	22.9	9.4	11.2	33.0
8.0	21.6	56.0	27.7	11.8	14.6	38.8
10.0	26.0	61.0	35.3	15.9	17.5	37.0
10.3	26.0	61.0	35.3	15.9	17.5	37.0
12.0	28.5	70.5	35.9	15.0	20.0	44.5

RADLOK™ Connector (Stamped Version)

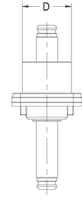
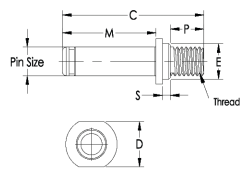
RADLOK™ Size (mm)	W	N	H	h	D	P
5.7	18.5	46.0	21.9	9.2	11.2	30.0
8.0	21.7	54.4	27.7	12.5	14.6	34.3
10.0	25.7	65.0	33.3	16.1	17.5	35.7



Tubular Lug Version



Stamped Lug Version

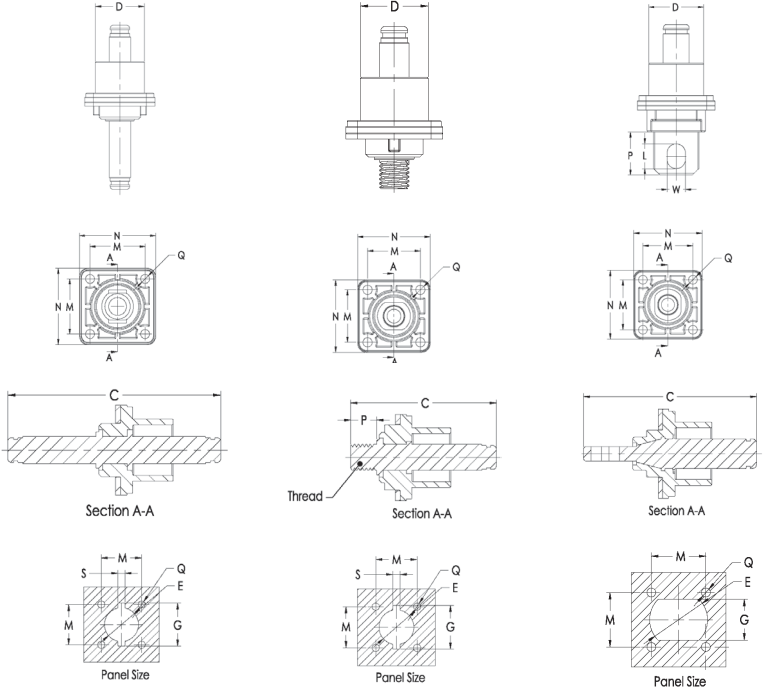


Technical Data

DC Voltage Rating	1000V
DC Current Rating	70A - 400A
Flammability Rating	UL94 V0
Operating Temperature Range	-40° C to 125° C
Mating Cycles	500



Pin Type	Pin End	RADLOK™ Pin Size (mm)	Current (A)	RADLOK™ Dimensions (mm)														
				C	D	E	G	L	M	N	P	Q	S	W	Thread			
Pin	N/A	3.6	70	25.2	5.3	Ø 4.8									17.4	5	1.5	M 3 x 0.5-6g
		5.7	120	33.9	7.8	Ø 7.0									21.1	10	1.5	M 6 x 1.0-6g
		8	200	40.2	12.8	Ø 10.0									26.4	10	2.2	M 8 x 1.25-6g
		10	300	47.4	12.8	Ø 12.0	N/A	N/A							32.2	10	3.2	M 10 x 1.5-6g
		10.3	350	47.4	12.8	Ø 12.0									32.2	10	3.2	M 10 x 1.5-6g
Feed Thru	Thread	12	400	47.9	15.8	Ø 14.5								32.9	10	2.8	M 12 x 1.75-6g	
		3.6	70	32.5	13.1	Ø 13.7	19.2							16	24.5	5	M 3 x 0.5-6g	
		5.7	120	42.1	16.2	Ø 16.2	21.7								18	27	10	M 6 x 1.0-6g
		8	200	48.4	19.6	Ø 18.2	23.7								21	30	10	M 8 x 1.25-6g
		10	300	62	23.0	Ø 20.2	25.7	N/A							24	33	16	M 10 x 1.5-6g
		10.3	350	62	23.0	Ø 20.2	25.7								24	33	16	M 10 x 1.5-6g
	Lug	12	400	65	25.5	Ø 22.2	27.7								26	36	16	M 12 x 1.75-6g
		3.6	70	42.9	13.1	Ø 19.6	11.6	6	16	24.5	16.5	M3			4.2			M 3 x 0.5-6g
		5.7	120	51.1	16.2	Ø 21.6	13.6	8	18	27	18.5				6.3			M 6 x 1.0-6g
		8	200	62.4	19.6	Ø 23.6	15.6	10.5	21	30	22				8.5			M 8 x 1.25-6g
		10	300	71.2	23.0	Ø 25.6	17.6	12.5	24	33	24	M4			10.5			M 10 x 1.5-6g
		10.3	350	71.2	23.0	Ø 25.6	17.6	12.5	24	33	24				10.5			M 10 x 1.5-6g
Pin	12	400	76	25.5	Ø 27.6	19.6	14.5	26	36	26				13			M 12 x 1.75-6g	
	3.6	70	42.8	13.1	Ø 13.7	19.2								16	24.5		M 3 x 0.5-6g	
	5.7	120	51.2	16.2	Ø 16.2	21.7								18	27		M 6 x 1.0-6g	
	8	200	64	19.6	Ø 18.2	23.7								21	30		M 8 x 1.25-6g	
	10	300	78.5	23.0	Ø 20.2	25.7								24	33		M 10 x 1.5-6g	
	10.3	350	78.5	23.0	Ø 20.2	25.7								24	33		M 10 x 1.5-6g	
12	400	80.2	25.5	Ø 22.2	27.7								26	36		M 12 x 1.75-6g		



How to Order

Product Type	Termination Type	RADSOK® **	(mm)	Lug Type	Cable Size (mm²) **	Current (A)	Length (mm)	Conn. Color	Stud Size	Pin End	Plating Type	Modification		
RL	CABLE ASSEMBLY	1 RDLK + RDLK	036	3.6	N/A	10	70	*	ORANGE	N/A	N/A	N/A		
		2 RDLK + POW LUG											057	5.7
		3 RDLK + POW LUG 45°											080	8.0
		4 RDLK + LUG TRMNL											100	10.0
		5 RDLK + RING TRMNL											103	10.3
		6 RDLK + BLUNT CUT											120	12.0
		7 RDLK + STRIPPED												
	CONNECTOR	0 RDLK CONNECTOR			1 TUBULAR									
PIN	9 RDLK PIN			2 STAMPED										
							N/A			10 THREAD	1 Silver	* / F1		
										20 LUG	2 Tin	* / F1		
										30 PIN-PIN	3 Nickel	* / F1		

NOTE:

- For all applications, care must be taken to ensure that RADLOK™ connection is protected from the transmittal of any mechanical loads induced by, but not limited to, vibration, bending, the mass of the cable, or shock loading. The cable/wiring should be secured as close to the RADLOK™ as possible. Custom mounting options and recommendations are available upon request.
- "Stud Size", M for Metric unit & E for Imperial unit. For example, M8 means Stud Size is 8mm; E3/4 means the Stud Size is 3/4 inch.

Examples:

- 10.0mm Orange RADLOK™ connector to 3/8" stud hole Lug Terminal, 10ft long 70mm² cable assembly would have part number, **RL4-100-70L3048E3/8**
- 8.0mm Black RADLOK™ connector with Tubular 50mm² cable crimp would have part number, **RL0-080-1-50BK**
- Silver plated 12.0mm RADLOK™ Feed Thru Pin would have part number, **RL9-120-101F1**

* (Leave blank for default connector color or default pin without modification)
 ** (10mm² cable is recommended for 3.6mm RADSOK®; 16mm²/25mm² cable is recommended for 5.7mm RADSOK®, ...etc)

For further information on your individual application requirements, contact: Amphenol Corporation

<p>North America: Amphenol Industrial Operations 180 N. Freeport Drive, Plant 4 Nogales, AZ 85621 Tel: (520) 285-5130 Fax: (520) 285-5134 Email: tech@amphenol-aio.com</p>	<p>Europe: Amphenol Industrial Operations Europe Via Barbaiana 5 1-20020 Lainate (MI) Italy Tel: +39 02 93254.204 Fax: +39 02 93254.444 Email: info@amphenol-aio.com</p>	<p>Middle East: Amphenol Middle East Enterprises FZE Office C-37 PO Box 21107 Ajman Free Zone, UAE Tel: +9 716-7422494 Fax: +9 716-7422941 Email: jhussain@amphenol-industrial.com</p>	<p>Asia: Amphenol Technology Shenzhen Ltd Block 5 Fuan 2nd Industrial Park Dayang Rd, Fuyong Baoan Baoan, Shenzhen, China 518103 Tel: +86 755 2881 8389 Fax: +86 755 2991 8310 Email: enquiry@amphenol-aio.com</p>
--	--	--	---