

| REVISIONS |                             |          |        |
|-----------|-----------------------------|----------|--------|
| REV       | ECN, ERN NO.                | DATE     | APPRD. |
| E         | PRODUCT DRAWING (EAR 14498) | NOV11/16 | K.L.   |

ORDERING CODE: F C E 1 7 - B 2 5 A D - 4 0 0 G

**SERIES**  
FCE17=FILTERED D-SUB, RoHS

**SIZE/NUMBER OF CONTACTS**  
E09, A15, B25, OR C37

**CONNECTOR STYLE**  
AD=PIN/SOCKET ADAPTER

**MOUNTING**  
2=.120 [3.05] DIA. THROUGH HOLE WITH #4-40 MOUNTING POST  
4=#4-40 UNC THREAD  
6=M3 x 0.5 THREAD  
K=.120 [3.05] DIA. THROUGH HOLE WITH M3 x 0.5 MOUNTING POST

**CONTACT FINISH/GOLD THICKNESS**  
NO DIGIT=STANDARD 15 MICRONS [0.38 MICRONS] GOLD ON MATING AREA  
G=50 MICRONS [1.27 MICRONS] GOLD ON MATING AREA

**MODIFIER**  
O=STANDARD

**FILTER CAPACITANCE**  
D=50 pF    5=1000 pF  
B=100 pF    7=1200 pF  
O=180 pF    6=1300 pF  
F=330 pF    J=1500 pF  
L=380 pF    E=2200 pF  
1=470 pF    9=5600 pF  
4=820 pF    8=47000 pF  
N=NO FILTERS

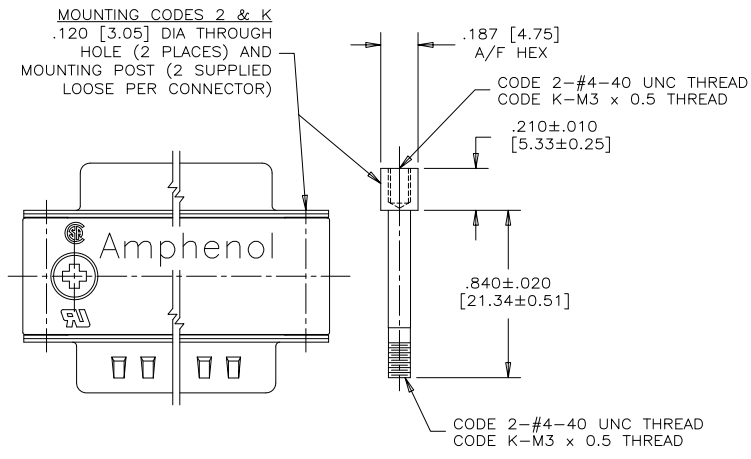
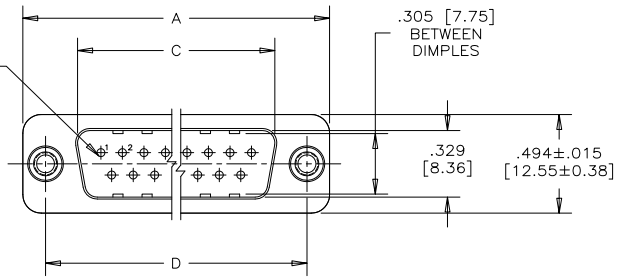
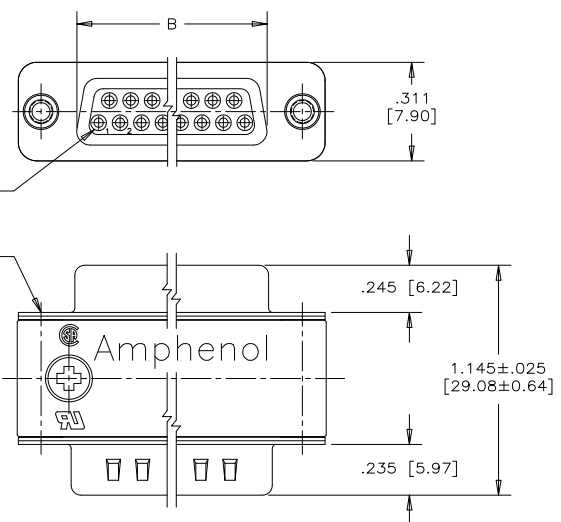
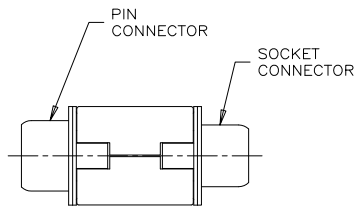
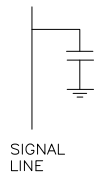
REFER TO AMPHENOL CATALOGUE FOR FILTER PERFORMANCE CHARACTERISTICS

**NOTES:**

- MATERIALS: - ALL MATERIALS ARE RoHS COMPLIANT  
- SHELLS: TIN PLATED STEEL  
- CONTACTS: PHOSPHOR BRONZE PLATED WITH GOLD OVER 50µ" [1.27 MICRONS] NICKEL ON MATING AREA. SEE ORDERING CODE.  
- INSULATOR: ENGINEERING THERMOPLASTIC, GLASS REINFORCED, FLAMMABILITY RATING UL94V-0, BLACK.  
- OUTSIDE SHELLS: ZINC DIECAST, NICKEL PLATED  
- MOUNTING HARDWARE: STEEL OR COPPER ALLOY, TIN OR NICKEL PLATED
- CONTACT RESISTANCE: 30 MILLIOHMS MAXIMUM
- INSULATION RESISTANCE: 3000 MEGOHMS MINIMUM
- CURRENT RATING: 5 AMPS MAXIMUM
- OPERATING TEMPERATURE: -40°C TO 85°C.
- TOLERANCE, UNLESS INDICATED OTHERWISE, ±.005 [0.13].

| SIZE | A±.015 [0.38] | B±.005 [0.13] | C±.005 [0.13] | D±.005 [0.13] |
|------|---------------|---------------|---------------|---------------|
| E09  | 1.213 [30.81] | .643 [16.33]  | .666 [16.92]  | .984 [24.99]  |
| A15  | 1.541 [39.14] | .971 [24.66]  | .994 [25.25]  | 1.312 [33.32] |
| B25  | 2.088 [53.04] | 1.511 [38.38] | 1.534 [38.96] | 1.852 [47.04] |
| C37  | 2.729 [69.32] | 2.159 [54.84] | 2.182 [55.42] | 2.500 [63.50] |

CAPACITANCE SCHEMATIC FOR EACH POSITION



MOUNTING CODE 4  
4-40 UNC THREAD OR  
MOUNTING CODE 6  
M3 x 0.5 THREAD  
X .240 [6.10] MIN. DEEP (4 PLACES)

MOUNTING CODES 2 & K  
.120 [3.05] DIA THROUGH HOLE (2 PLACES) AND MOUNTING POST (2 SUPPLIED LOOSE PER CONNECTOR)

THIS DOCUMENT CONTAINS PROPRIETARY INFORMATION AND SUCH INFORMATION MAY NOT BE DISCLOSED TO OTHERS FOR ANY PURPOSE OR USED FOR MANUFACTURING PURPOSES WITHOUT WRITTEN PERMISSION FROM AMPHENOL CANADA CORP.



|                   |              |              |          |
|-------------------|--------------|--------------|----------|
| DRAWN             | S.BUENAVIDES | DATE         | DEC08/05 |
| DESIGNED          |              |              |          |
| CHECKED           | K.LAMBIE     | DATE         | DEC08/05 |
| I. E. APPRD.      |              |              |          |
| Q. A. APPRD.      |              |              |          |
| DWG. APPRD.       |              |              |          |
| ENG. REL. NO.     |              |              |          |
| REF.              | EAR 12888    |              |          |
| DIMENSIONS ARE IN | INCHES [mm]  | CODE ID. NO. | 03554    |

**Amphenol Canada Corp.**

FCE17 SERIES FILTERED D-SUB CONNECTOR, MALE/FEMALE ADAPTER, RoHS COMPLIANT

|       |                    |              |
|-------|--------------------|--------------|
| DWG   | DRAWING NO.        | REV.         |
| C     | P-FCE17-XXXAD-XXOX | E            |
| SCALE | 2/1                | WT. -----    |
| SURF. | -----              | SHEET 1 of 1 |