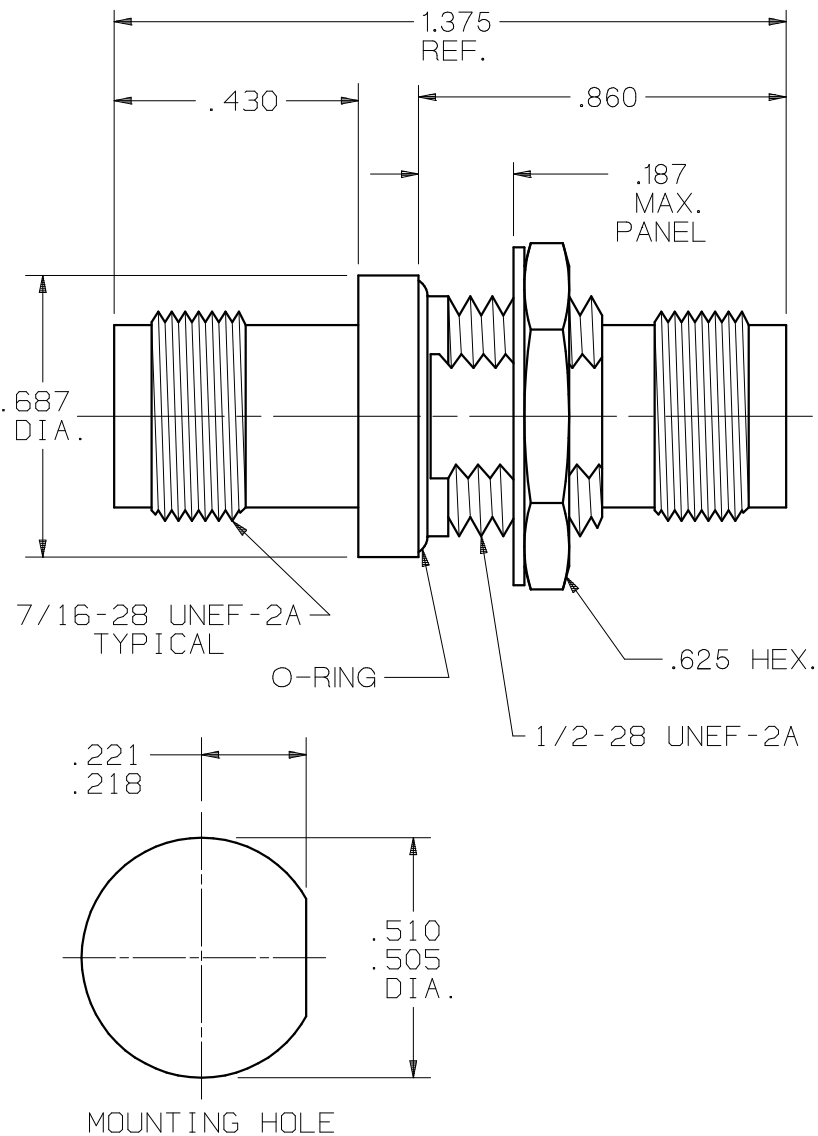


# PRODUCT DATA DRAWING

CAD GENERATED DRAWING	DCN CONTROLLED DOCUMENT	DWG. NO.  <b>4087-0003</b>
-----------------------------	-------------------------------	----------------------------------



**MATERIALS:**

- BODY AND HEX NUT: BRASS PER ASTM B 16, ALLOY C36000, TEMPER H02.
- CONTACTS: BERYLLIUM COPPER PER ASTM B 196, COND. TDO4, ALLOY C17300.
- INSULATORS: TEFLON PER ASTM D 1457.
- O-RING: SILICONE RUBBER PER ZZ-R-765, CLASS IIB, GRADE 50 OR 60.
- GLASS SEAL: OUTER RING PER ASTM A29, GRADE 12L14, CENTER PIN #52 NICKEL ALLOY STEEL, GLASS CORNING # 9010 OR EQUIVALENT.
- LOCKWASHER: PHOSPHOR BRONZE PER ASTM B 103, ALLOY 52100.
- FINISH: ALL METAL PARTS EXCEPT CONTACT: SILVER PER QQ-S-365, TYPE II, GRADE A.  
CONTACT: GOLD PER MIL-G-45204, TYPE 1, GRADE C, CLASS 1 OVER NICKEL PER QQ-N-290, CLASS 1.
- IMPEDANCE: 50 OHMS
- FREQ. RANGE: DC-12.4 GHz
- D.W.V.: 1500 VRMS
- INSUL. RES.: 5000 MEGOHMS, MIN.
- VSWR: 1.2:1 MAX.
- HERMETICITY:  $1 \times 10^{-8}$  CC/SEC.

SYM.	DESCRIPTION	DATE	APPR.	UNLESS OTHERWISE SPECIFIED: 1) ALL DIMENSIONS ARE AFTER PLATING. 2) BREAK CORNERS & EDGES .005 R. MAX. 3) CHAM. 1st & LAST THDS. 4) SURFACE ROUGHNESS 63 J MIL-STD-10. 5) DIAS. ON COMMON CENTERS TO BE CONCENTRIC WITHIN .005 T.I.R. 6) REMOVE ALL BURRS.	DIMENSIONS ARE IN INCHES TOLERANCES:			<b>SV Microwave, Inc.</b> 2400 Centrepark West Drive, Suite 100 West Palm Beach, FL 33409
B	REV. DCN F5607	1/77	D.W.		DECIMALS .X ±.030 .XX ±.015 .XXX ±.005	FRACTIONAL ±1/64	ANGULAR X° ±1°0' X°X' ±15'	
C	REV. DCN 24366	4/98	SW		MATERIAL: SEE ABOVE			DWG. NO. <b>4087-0003</b>
D	REV. DCN 25736	12/99	SW		FINISH: SEE ABOVE AREA: N/A			
E	REV. DCN 30634	11/03	STW	REDRAWN: JRG 4/30/98	SIZE <b>A</b>	CAGE NO. <b>95077</b>	SCALE <b>N/A</b>	
				CHECKED:				
				APPROVED: D.W. 1/25/77				