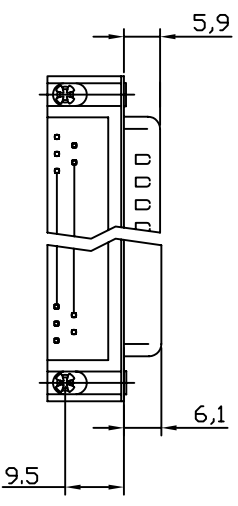
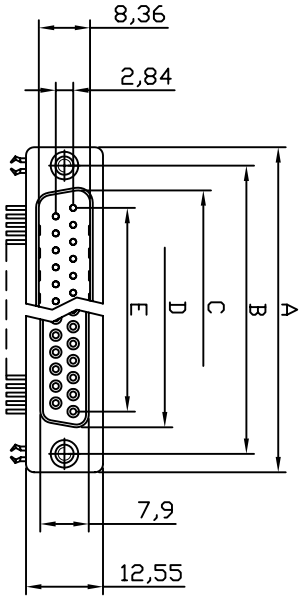
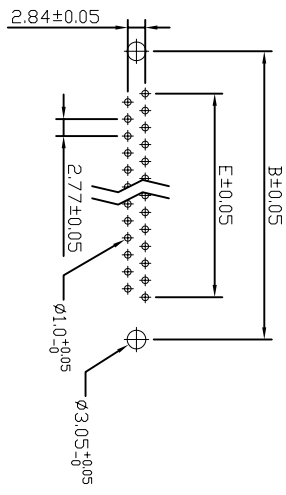
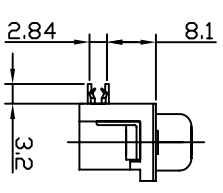


This document is the property of Amphenol Corporation and is delivered on the express condition that it is not to be distributed, reproduced or used, in whole or in part, without the prior consent of Amphenol Corporation. Amphenol Corporation and its subsidiaries and affiliates shall not be held liable for any errors or omissions or to use any information in this document.



Plug Socket



RECOMMENDED PCB LAYOUT  
(TOLERANCE +/- 0.03)

Dimensions	A	B	C	D	E
9	30.81	24.99	16.92	16.33	11.08
15	39.14	33.32	25.50	24.66	19.39
25	53.04	47.04	38.96	38.38	33.24
37	69.32	63.50	55.42	54.84	49.86



REVISED		DATE	APPROVED
SM	EON	24/01/07	
B			

D-SUB TECHNICAL DATA

Product Specification

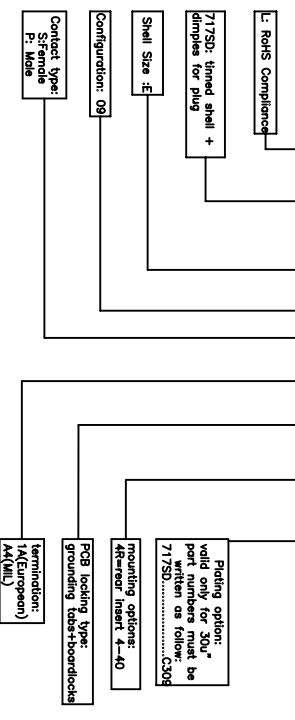
Material and Finish  
Insulator: PBT + Glass-filled thermoplastic, UL-94V-0 rated.  
Male Contact: Brass per QQ-B-626, selected gold over full tin.  
Female Contact: Phosphor Bronze per QQ-B-750, selected gold over full tin.  
Metal Shell: Carbon steel per ASTM-A-109, tin over nickel.  
Boardlock: Copper alloy, tin over nickel.  
Screwlock: Brass per QQ-B-626, tin over nickel.

Electrical  
Contact Resistance: 25 milliohms max. At 1 ampere Dc.  
Insulation Resistance: 5000 megohms at 500 VDC.  
Dielectric Withstanding Voltage: 1000 VAC/rms 60Hz for one minute.  
Current Rating: 1 amperes per contact.  
Voltage Rating: 250 VAC/rms 60Hz.

Environmental  
Operating Temperature: -55C to +105C.  
Humidity: 24hours at 40C/95%R.H.

PRODUCT CODE

L717SD E 09 P A4 CH 4R C309



Amphenol

D-SUB contacts, SD series

DIMENSIONS SPECIFIED		APPROVAL		DATE	
TOLERANCES	METRIC	DRAWN	LEON TUB/lem/02	CHECKED	EM/lem/07
U.S.	0.50				
	0.30				
	0.20				
FOR MATERIALS AND FINISHES		DRAWING FILE:		TITLE	
REMOVE SHARP EDGES		ANGLE OF PROJECTION		D-SUB contacts, SD series	
DIMENSIONS		SIZE: DRAWING NO.		A4 C L717SD E09 P A4 CH 4R C309	
TYPICAL		SCALE		NONE	
ASSEMBLY		SHEET		1 OF 1	
		REV.		B	