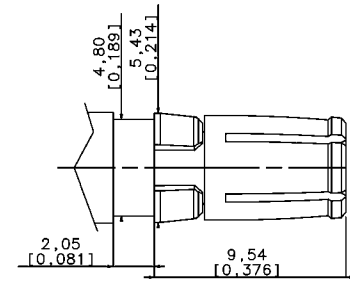
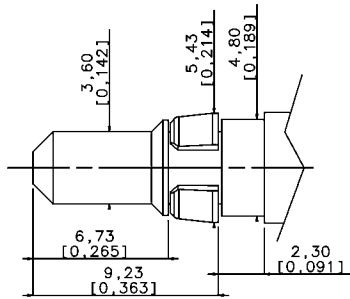


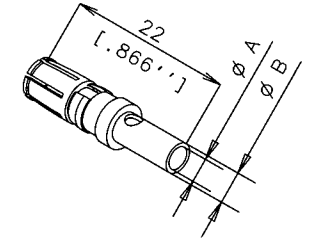
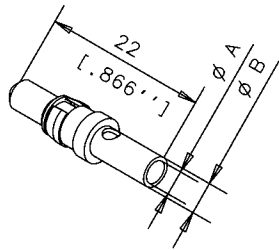
MATERIAL

PIN CONTACT Cu Zn
 SOCKET CONTACT Cu Ni
 RETAINING CLIP Thermoplastic
 SURFACE PLATING Au = 0.5 um



HIGH POWER PLUG

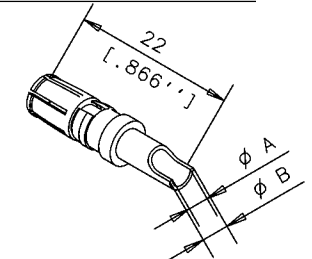
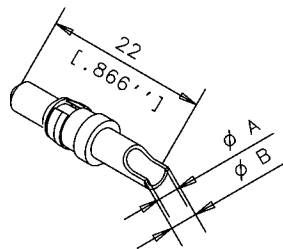
HIGH POWER JACK



CRIMP VERSION VERSION A SERTIR

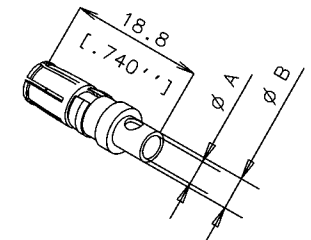
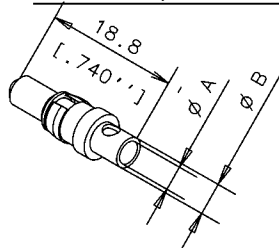
| | CURRENT | PUISSANCE | ϕA | ϕB | | |
|-----------|----------------|-----------|----------|----------|----------------|-----------|
| 4W540 30R | L17DM53745-208 | 10A | 1.8 | 2.55 | L17DM53744-207 | 4W550 30R |
| 4W540 20R | L17DM53745-207 | 20A | 2.8 | 3.7 | L17DM53744-206 | 4W052 16P |
| 4W042 36P | L17DM53745-204 | 30A | 3.76 | 4.7 | L17DM53744-204 | 4W052 36P |
| 4W540 00R | L17DM53745-201 | 40A | 4.8 | 5.6 | L17DM53744-201 | 4W052 06P |

SOLDER VERSION VERSION A SOUDER

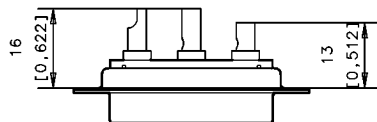


| | CURRENT | PUISSANCE | ϕA | ϕB | | |
|-----------|--------------|-----------|----------|----------|--------------|-----------|
| 4W040 30C | L17DM53745-8 | 10A | 1.8 | 2.55 | L17DM53744-7 | 4W050 30C |
| 4W040 20C | L17DM53745-7 | 20A | 2.8 | 3.7 | L17DM53744-6 | 4W050 20C |
| 4W040 00C | L17DM53745-1 | 40A | 4.8 | 5.6 | L17DM53744-1 | 4W050 00C |

CRIMP SHORT VERSION VERSION COURTE A SERTIR



| | CURRENT | PUISSANCE | ϕA | ϕB | | |
|-----------|----------------|-----------|----------|----------|----------------|-----------|
| 4W042 29R | L17DM53745-218 | 10A | 1.8 | 2.55 | L17DM53744-217 | 4W050 29R |
| 4W042 19R | L17DM53745-217 | 20A | 2.8 | 3.7 | L17DM53744-216 | NC |
| NC | L17DM53745-211 | 40A | 4.8 | 5.6 | L17DM53744-211 | NC |



| | | | | | | | |
|-----------------------------------|------------------------------|-------------|------------|---------------|------|------------------|--|
| | | | | TOL. GEN. | | Amphenol Socapex | |
| | | | | VOLUME PIECE | | Usine de Dole | |
| | | | | SURFACE PIECE | | | |
| C | conform to RoHS DM 05 23 010 | Vallot | 23/12 05 | PROTECTION | | | |
| B | RETAINING CLIP thermoplastic | QUERE | 04/10 2004 | TRAITEMENT | ECH. | ENS. | |
| A | CREATION PLAN | Quere | 19/10 95 | MATIERE | | N SERIE | |
| IND. MODIFICATIONS | | EXEC. | DATE | Approb | | | |
| DATE DU TIRAGE | | DESIGNATION | | | | | |
| HIGH POWER CONTACTS 0,5 Au | | | | | | | |