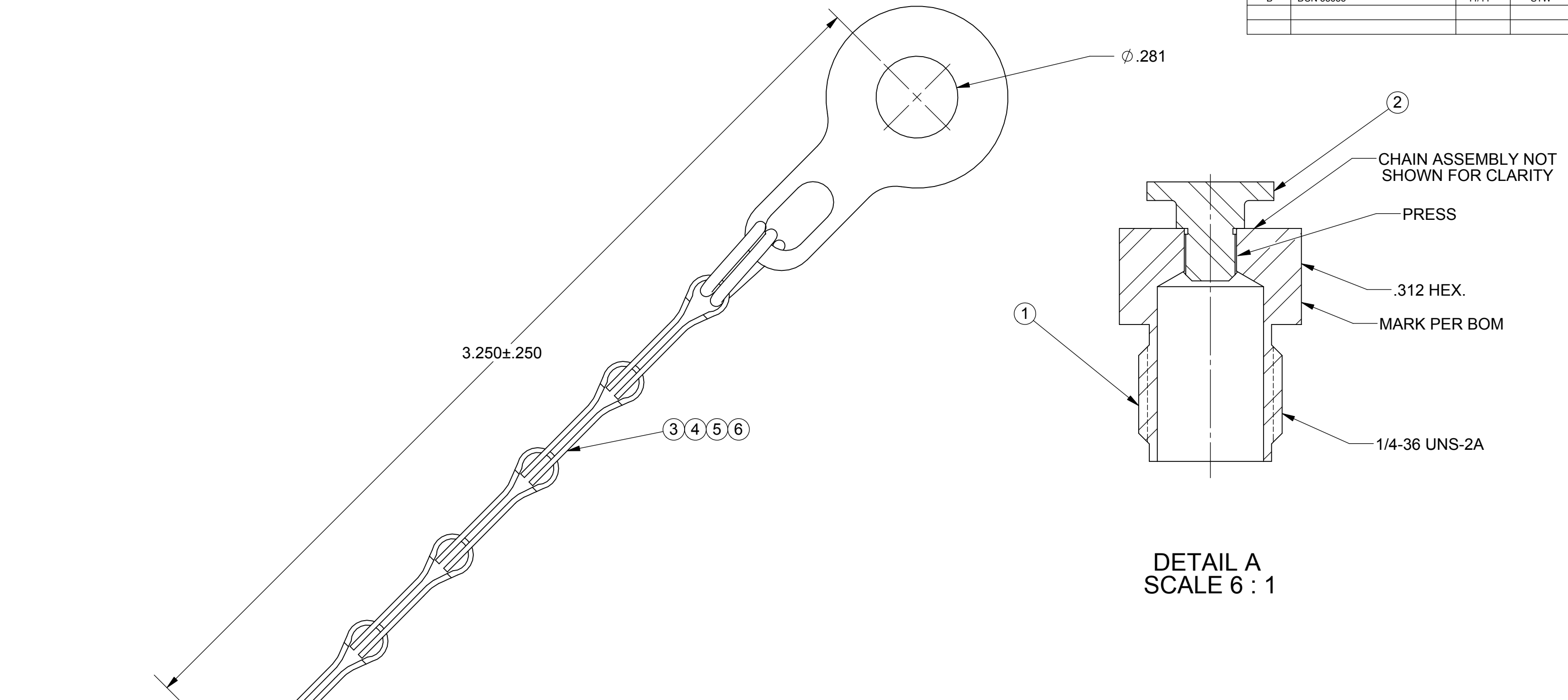


REVISION HISTORY			
REV	DESCRIPTION	DATE	APPROVED
B	DCN 38685	11/11	STW



DETAIL A
SCALE 6 : 1

- NOTES:
1. SAFETY CHAIN MUST ROTATE FREELY AFTER RIVET IS PRESSED INTO CAP.
 2. PRESS FIT TO HOLD 20 LBS. MIN. AXIAL FORCE.
 3. SAFETY CHAIN ASSEMBLY MUST WITHSTAND A 75 LB. TENSILE FORCE.

THIS LINK BENT
45° TO ALLOW
FREE TURNING

MATERIAL: PER BOM	DIMENSIONS ARE IN INCHES TOLERANCES:	UNLESS OTHERWISE SPECIFIED	SV Microwave, Inc. 2400 Centrepark West Drive, Suite 100 West Palm Beach, FL 33409 TITLE: SMA JACK NON SHORTING DUST CAP WITH SAFETY CHAIN
FINISH: PER BOM	FRACTIONAL: ±1/64 ANGULAR: X° ±1°0' X'X' ±15' DECIMAL: X ±.030 .XX ±.010 .XXX ±.005	1) ALL DIMENSIONS ARE AFTER PLATING. 2) BREAK CORNERS & EDGES .005 R. MAX. 3) CHAM. 1ST & LAST THREADS. 4) SURFACE ROUGHNESS 63√ MIL-STD-10. 5) DIA.'S ON COMMON CENTERS TO BE CONCENTRIC WITHIN .005 T.I.R. 6) REMOVE ALL BURRS	
PROPRIETARY THE INFORMATION CONTAINED IN THIS DRAWING IS THE SOLE PROPERTY OF SV MICROWAVE, INC. ANY REPRODUCTION IN PART OR AS A WHOLE WITHOUT THE WRITTEN PERMISSION OF SV MICROWAVE, INC IS PROHIBITED.	INTERPRET DIMENSIONS AND TOLERANCES PER ASME Y14.5M - 1994 THIRD ANGLE PROJECTION	DRAWN: MEB 10/28/02 CHECKED: STW 10/28/02 APPROVED: STW 10/28/02 E.M. SIMULATION: N/A	SIZE: B CAGE CODE: 95077 DWG. NO.: M39012/25-3027 SCALE: 1:1