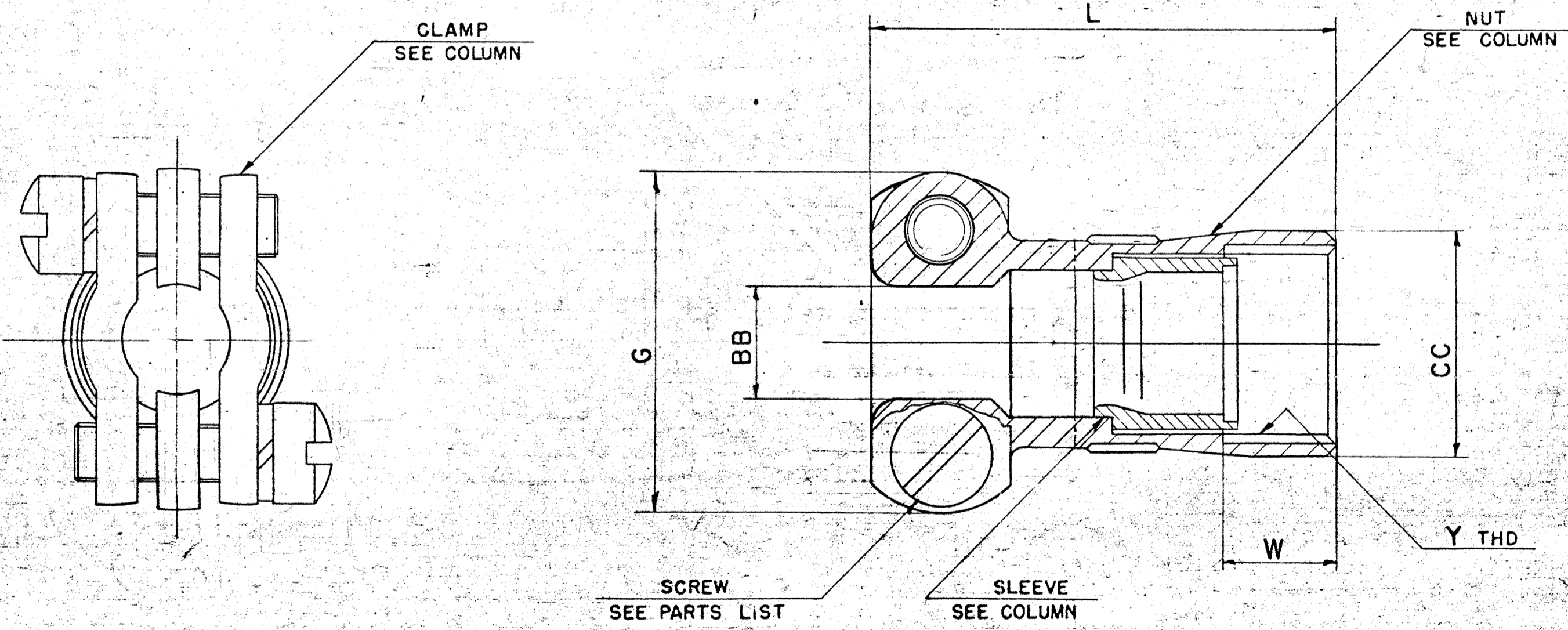


ASSEMBLY NUMBER	DETAILS				G MAX	L MAX	BB DIA +.000 - .010	CC DIA	Y THREAD REF SIZE CLASS 2B	W +.062 - .031	SCREW SIZE	WT-LB	RELEASE
	NUT	SLEEVE	CLAMP										
			PART NUMBER	QTY									
10-101984-8	10-101982-8	10-454396-8	10-130511-8	2	.775	1.190	.250	.540	.4375-28UNEF	.250	6-32NC		33788-4
-10	-10	-10	-10		.837		.312	.665	.5625-24UNEF				
-12	-12	-12	-12		.963		.438	.793	.6875-24UNEF				
-14	-14	-14	-14		1.087		.562	.910	.8125-20UNEF				
-16	-16	-16	-16		1.150	1.292	.624	1.037	.9375-20UNEF				
-18	-18	-18	-18		1.400	1.292	.750	1.155	1.0625-18UNEF		8-32NC		
-20	-20	-20	-18		1.400	1.332	.750	1.281	1.1875-18UNEF	.344			
-22	-22	-22	-20		1.587	1.332	.938	1.408	1.3125-18UNEF	.344			
-24	-24	-24	-22		1.681	1.332	1.000	1.533	1.4375-18UNEF	.344			35524-406

REV	DESCRIPTION	DATE	D'MAN
1	35524-406 ADD. & REL. SIZE 24 & DATA	4-1-59	BARTON
2	35407 REV DATA FOR -24	6-23-59	WELLES
3	38524-1255 ADD. & REL. -XX0 FINISH	7-24-62	HANN
A1	42524-1407 (MFG) ADD & REL -XX7 & -XX8 FINISHES	9-3-64	HANN
A2	53909-2 REV SLEEVE COL	7-5-72	HANN
A3	54524-368 ADD & REL -XX9, -XXE, -XXG	4-17-73	HANN
B	58525-140 (MFG) REV Y THD COL.	7-12-77	HANN
C	23813 (CLIT) REV L COL.	2-12-79	JED
D	80672 (CLIT) ADD & REL -XXY FINISH & DATA	9-7-95	JED
E	85416 (CLIT) ADD & REL -XXY FINISH & DATA	9-16-98	JED



10-101984

NOTES: REF SYMBOL

1. TO COMPLETE ASSEMBLY NO. AND DETAIL NO., ADD APPLICABLE LAST CHARACTER SUFFIX NO. FOR DESIRED FINISH.

- CHROMATE TREATED SUFFIX -XX0
- BRIGHT CADMIUM PLATE SUFFIX -XX1
- BLACK ANODIZE SUFFIX -XX2
- CADMIUM PLATE OLIVE DRAB SUFFIX -XX3
- GREY ANODIZE SUFFIX -XX4
- ANODIC COATING SUFFIX -XX5
- CADMIUM PLATE NICKEL BASE SUFFIX -XX7
- BRIGHT NICKEL SUFFIX -XX8
- OLIVE DRAB, CAD. PLATE, NICKEL BASE SUFFIX -XX9
- CHROME PLATE SUFFIX -XXE
- NICKEL ALLOY PLATE SUFFIX -XXG
- BLACK ZINC ALLOY PLATE SUFFIX -XXY
- BLACK ZINC ALLOY CONDUCTIVE PLATE SUFFIX -XXX

RELEASE  
38524-1255  
~~33788-4~~  
52524-1407  
54524-368

USE OF THIS DOCUMENT IS UNLIMITED. DOCUMENTS REFERENCED HEREON CONTAIN LIMITED RIGHTS DATA.

MATERIAL SPEC.	PROCESS SPEC.	SCINTILLA MAGNETO DIVISION BENDIX AVIATION CORPORATION SIDNEY, N. Y., U.S.A.				SCALE	
		NAME CLAMP ASSEMBLY, CABLE STRAIN RELIEF, ELECTRICAL CONNECTOR, TYPE PC( )E				NONE	
HEAT TREAT SPEC.	FINISH SPEC. SEE NOTE 1	D'MAN	CHECKER	MAT.	ST'DS	CH. D'MAN	APPROVED
		FGEORGE	WELLES			WELLES	WELLES
TOOL ACC.	COM. REC.	11-6-57	1-16-58			1-16-58	1-16-58
						ASSEMBLY NO. 10-142706/50	
						ASSEMBLY NO. 10-101984	
						CODE 77820	

Scanned