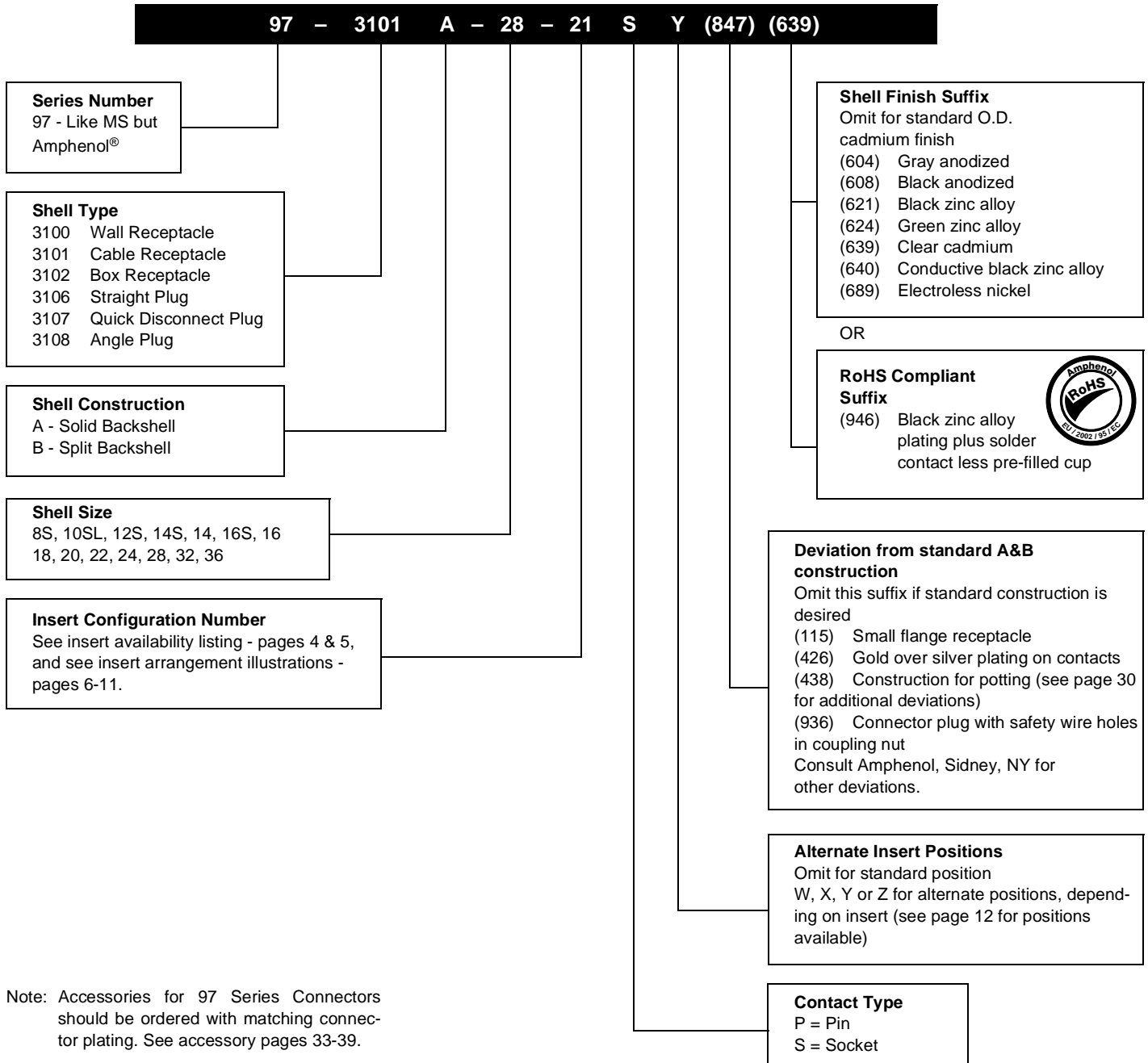


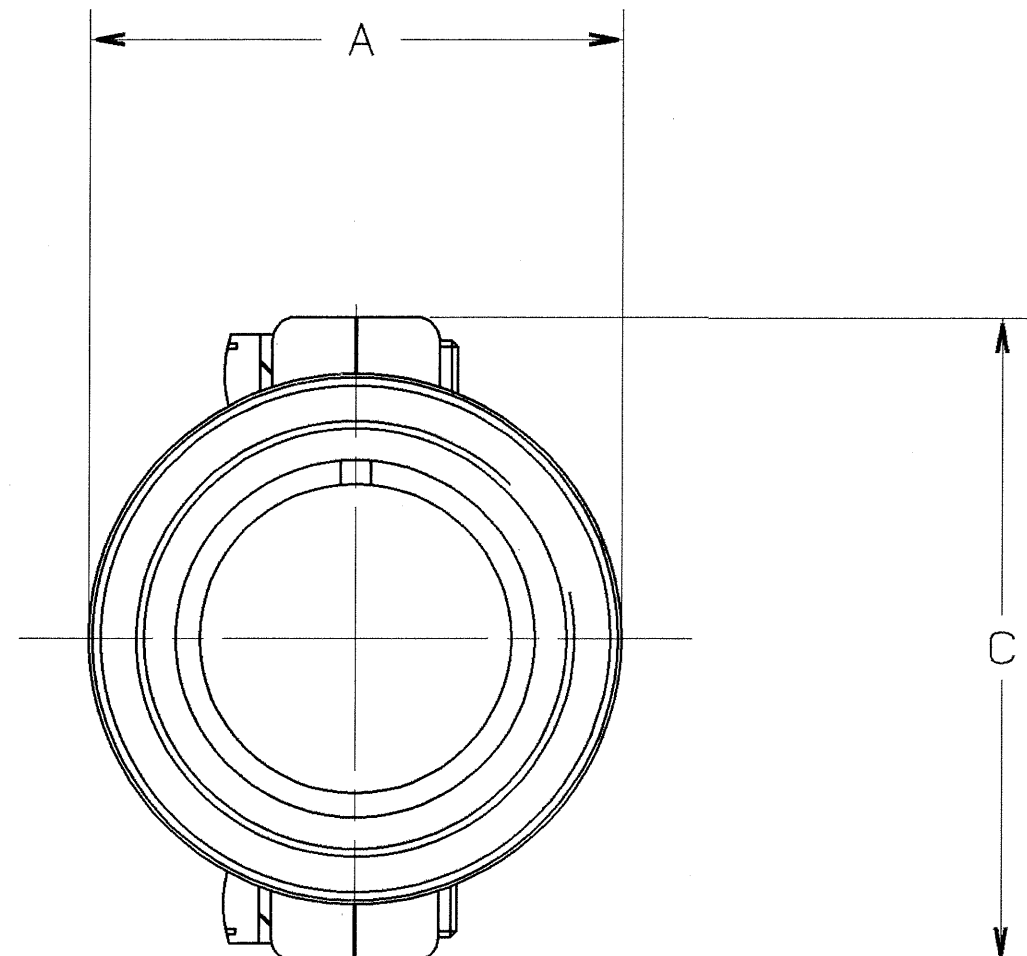
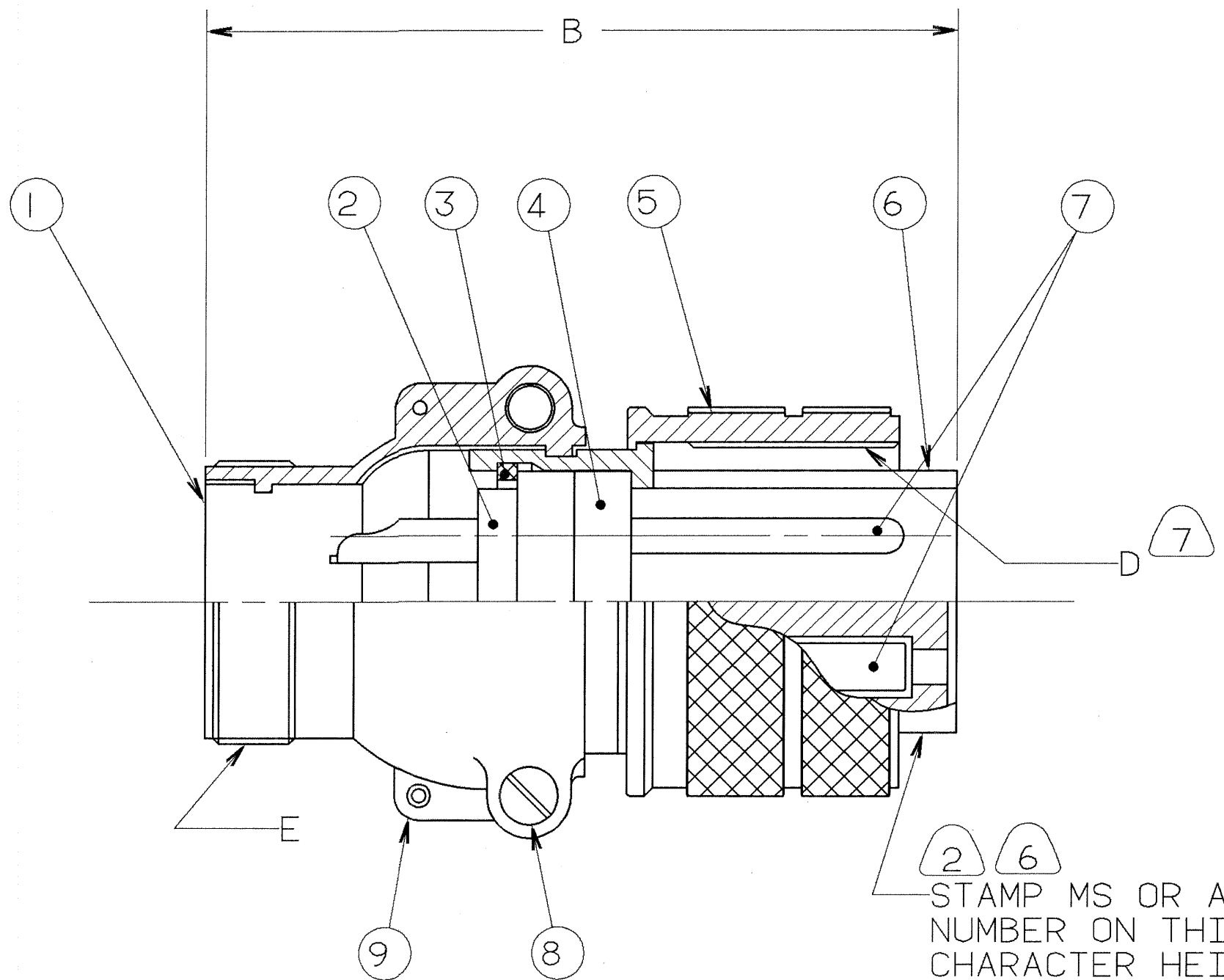
97 series solder type how to order

Example of part number for solder type connectors is given below.



Note: Accessories for 97 Series Connectors should be ordered with matching connector plating. See accessory pages 33-39.

| REVISIONS | | | | |
|-----------|-----|----------------------------------|----------------------|--------------|
| ZONE | LTR | DESCRIPTION | DATE | APPROVED |
| — | C | (CLII) ADDED NOTE 8 ECN:22391 | 08/29/89 BURNSIDE | m.d. J.B. |



| FIND NO. | QTY REQD. | FSCM NO. | PART NUMBER | DESCRIPTION | NOTE REF. |
|----------|------------|----------|-------------|--------------------|-----------|
| 9 | SEE NOTE 1 | | SEE NOTE 1 | BACK SHELL, FEMALE | |
| 8 | | | | SCREW, BACK SHELL | |
| 7 | | | | CONTACTS | |
| 6 | | | | SHELL | |
| 5 | | | | RING, COUPLING | 7 |
| 4 | | | | INSERT, FRONT | |
| 3 | | | | RING, RETAINING | |
| 2 | | | | INSERT, REAR | |
| 1 | | | | BACK SHELL, MALE | |

UNLESS OTHERWISE SPECIFIED
LINEAR DIMENSIONS ARE IN
INCHES.
TOLERANCES: .XXX±.010,
.XX ±.03, .X ±.1,
ANGLES ±2°.
OTHER STANDARDS PER 9-3800
AND DOD-D-1000.
NOTE REF. = XX

| PARTS LIST | | | | | |
|----------------------------|-------------------------------|----------|--|-------------------|---------------|
| SPECIFICATIONS | SIGNATURES | DATES | AMPHENOL CORPORATION BENDIX CONNECTOR OPERATIONS SIDNEY, N.Y. | | |
| MATERIAL SPEC. N/A | PREPARED A. PRESCOTT | 11/6/87 | CONNECTOR, ELECTRICAL PLUG, TYPE 97-3106B, OLIVE DRAB CADMIUM PLATED | | |
| | CHECKED PHILPOTT | 11/12/87 | | | |
| PROCESS SPEC. 9-2437-33 | APPROVED BERNHARDT | 11/13/87 | SIZE C | FSCM NO. 77820 | 10-820120/139 |
| | APPROVED HAYNER | 11/17/87 | SCALE NONE | WT. | REF. N/A |
| | 1ST PART NO. 10-820126-02P | | | | SHEET 1 OF 2 |

SEE SHEET 2.
NOTES:

THE USE OF THIS DOCUMENT IS UNLIMITED.
HOWEVER, DOCUMENTS REFERENCED HEREON
MAY CONTAIN LIMITED RIGHTS DATA.

N/A
N/A
NEXT ASSEMBLY

97-3106B

8/29/89 16:24 * 89241 15:30 * PRELISE * 10-820120/139 0002

4

3

2

1

| BENDIX ASSEMBLY NUMBER | AMPHENOL ASSEMBLY NUMBER | MS ASSEMBLY NUMBER | A DIA. | B | C | D THREAD | E THREAD |
|------------------------|--------------------------|--------------------|---------------|-------|-------|-------------------|-------------------|
| 10-820120-() | 97-3106B- 8S -() | MS3106B- 8S -() | NOT AVAILABLE | | | | |
| 10-820121-() | -10S -() | -10S -() | ↓ | | | | |
| 10-820122-() | -10SL-() | -10SL-() | | | | | |
| 10-820123-() | -12S -() | -12S -() | ↓ | | | | |
| 10-820124-() | -12SL-() | -12SL-() | | | | | |
| 10-820125-() | -12 -() | -12 -() | ↓ | | | | |
| 10-820126-() | -14S -() | -14S -() | | | | | |
| 10-820127-() | -14 -() | -14 -() | NOT AVAILABLE | | | | |
| 10-820128-() | -16S -() | -16S -() | 1.250 | 1.688 | 1.250 | 1.0000-20 UNEF-2B | .8750-20 UNEF-2A |
| 10-820129-() | -16 -() | -16 -() | NOT AVAILABLE | | | | |
| 10-820130-() | -18 -() | -18 -() | 1.344 | 2.063 | 1.641 | 1.1250-18 UNEF-2B | 1.0000-20 UNEF-2A |
| 10-820131-() | -20 -() | -20 -() | 1.469 | 2.125 | 1.812 | 1.2500-18 UNEF-2B | 1.1875-18 UNEF-2A |
| 10-820132-() | -22 -() | -22 -() | 1.594 | 2.125 | 1.937 | 1.3750-18 UNEF-2B | 1.1875-18 UNEF-2A |
| 10-820133-() | -24 -() | -24 -() | 1.719 | 2.281 | 2.063 | 1.5000-18 UNEF-2B | 1.4375-18 UNEF-2A |
| 10-820134-() | -28 -() | -28 -() | 1.969 | 2.281 | 2.312 | 1.7500-18 UNEF-2B | 1.4375-18 UNEF-2A |
| 10-820135-() | -32 -() | -32 -() | 2.219 | 2.312 | 2.594 | 2.0000-18 UNEF-2B | 1.7500-18 UNEF-2A |
| 10-820136-() | -36 -() | -36 -() | 2.469 | 2.344 | 2.848 | 2.2500-16 UN-2B | 2.0000-18 UNEF-2A |
| 10-820137-() | -40 -() | -40 -() | 2.812 | 2.344 | 3.156 | 2.5000-16 UN-2B | 2.2500-16 UN-2A |
| 10-820138-() | -44 -() | -44 -() | NOT AVAILABLE | | | | |
| 10-820139-() | -48 -() | -48 -() | NOT AVAILABLE | | | | |

D

D

C

C

B

B

A

A

TO COMPLETE, ADD APPLICABLE INSERT ARRANGEMENT SUFFIX PER 9-2437-33.

6

8. IDENTIFY PACKAGE WITH APPLICABLE MS OR 97- PART NUMBER PER NOTE 6.
7. APPLY LUBRICANT 9-7568 TO THREADS OF COUPLING RING.
6. FOR BENDIX INSERT ARRANGEMENT SUFFIX -1 THROUGH -49, STAMP MS ASSEMBLY NUMBER. FOR BENDIX INSERT ARRANGEMENT SUFFIX -50 THROUGH -99, AND -AA THROUGH -BC, STAMP AMPHENOL ASSEMBLY NUMBER.
5. FOR CONTACT ARRANGEMENT, SEE MIL-STD-1651 AND L-22208-() THROUGH L-22248-().
4. PACKAGE PER PRODUCTION PROCESS SHEET.
3. UNITS MEET THE APPLICABLE REQUIREMENTS OF MIL-C-5015.
2. SEE WORK ORDER FOR PERMISSIBLE ADDITIONAL OR ALTERNATE STAMPING.
1. SEE SEPARATE PARTS LIST FOR COMPONENT PART NUMBERS AND QUANTITIES.

NOTES:

THE USE OF THIS DOCUMENT IS UNLIMITED. HOWEVER, DOCUMENTS REFERENCED HEREON MAY CONTAIN LIMITED RIGHTS DATA.

| | | |
|-------|----------|---------|
| SIZE | FSCM NO. | REV. |
| C | 77820 | C |
| SCALE | WT. | REF. |
| | | SHEET 2 |

COMPUTER GENERATED DRAWING

TAB.

97-3106B