

PRODUCT DATA DRAWING

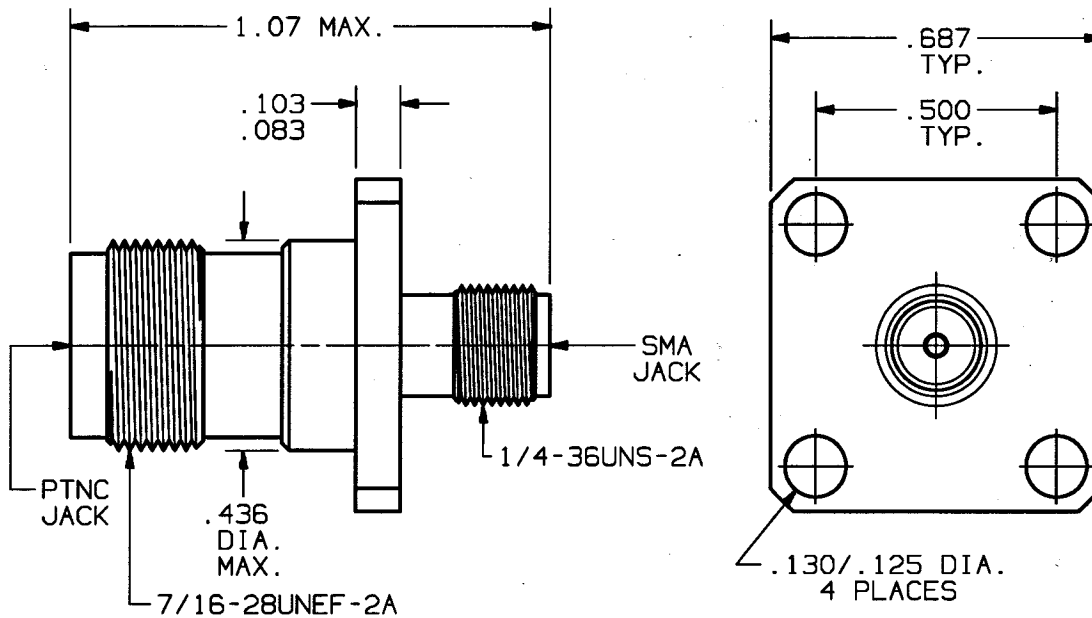
CAD
GENERATED
DRAWING

DCN
CONTROLLED
DOCUMENT

DWG. NO.

1102-0003

ENG. FILE COPY



MATERIAL:

BODY: BRASS PER ASTM-B-16, ALLOY UNS C36000, H02.
CONTACT: BERYLLIUM COPPER PER ASTM-B-196, ALLOY C17300, COND. TD04.
INSULATORS: TEFLON PER ASTM-D-1457.

FINISH:

BODY: SILVER WITH TARNISHING PROTECTION PER QQ-S-365, TYPE II, GRADE A.
CONTACT: GOLD PER MIL-G-45204, TYPE I, GRADE C, CLASS 1; OVER NICKEL PER QQ-N-290, CLASS 1.

IMPEDANCE: 50 OHMS
FREQ. RANGE: DC-15.0 GHz
DWV: 1000 VRMS
INSUL. RES.: 5000 MEGOHMS, MIN.

SYM.	DESCRIPTION	DATE	APPR.	UNLESS OTHERWISE SPECIFIED:	DIMENSIONS ARE IN INCHES			Solitron Vector Microwave 3301 ELECTRONICS WAY WEST PALM BEACH, FL. 33407
				1) ALL DIMENSIONS ARE AFTER PLATING. 2) BREAK CORNERS & EDGES .005 R. MAX. 3) CHAM. 1st & LAST THDS. 4) SURFACE ROUGHNESS 63 J MIL-STD-10. 5) DIAS. ON COMMON CENTERS TO BE CONCENTRIC WITHIN .005 T.I.R. 6) REMOVE ALL BURRS.	TOLERANCES:			
					DECIMALS	FRACTIONAL	ANGULAR	TITLE:
-	REL. DCN 24594	8/98	AW		.X ±.030		X° ±1°0'	SMA JACK TO PTNC JACK, 4 HOLE FLANGE ADAPTER ASSEMBLY
					.XX ±.015	±1/64	X°X' ±15'	
				DRAWN: BRT. 7/27/98	MATERIAL: SEE ABOVE			DWG. NO.
				CHECKED: AW 8/5/98	FINISH: SEE ABOVE	AREA: N/A	SCALE	1102-0003
				APPROVED: AW 8/5/98	SIZE	CAGE NO.	N/A	
					A	95077		