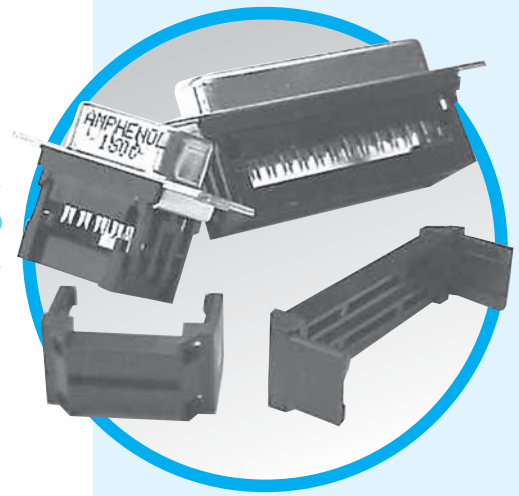


DFR

D-Sub connectors - Stamped and Formed Contacts

FLAT RIBBON D-SUB CONNECTORS



MAIN CHARACTERISTICS

Specifications

- Connectors according to MIL C24308

| Materials and Platings | |
|------------------------|--|
| Shells | Steel with nickel plating |
| Insulator | Glass-filled thermoplastic, UL 94V-0 |
| Pin contact | Brass, selected gold in mating area; 2.54µm (100µ") min. tin on termination area over 1.27µm (50µ") min. nickel |
| Socket contact | Phosphor bronze, selected gold in mating area; 2.54µm (100µ") min. tin lead on termination area over 1.27µm (50µ") min. nickel |
| Rear insert | Brass, 2.54µm (100µ") min. nickel plated |
| Screwlock | Brass, 2.54µm (100µ") min. nickel plated |

| Electrical Data | |
|------------------------------|----------------------------------|
| Current rating | 5A |
| Voltage rating | 250V AC/rms 60Hz |
| Withstanding voltage | 1000V AC/rms 60Hz for one minute |
| Insulation resistance | 1000MΩ |
| Contact resistance | 20mΩ max |

| Climatic Data | |
|------------------------------|-----------------|
| Operating temperature | -40°C to +125°C |

| Mechanical Data | | | |
|---|---------------------|-------------------|---|
| Single contact insertion force | 0.54kg (1.19lb) max | | |
| Single contact withdrawal force | 0.06kg (0.13lb) min | | |
| Mating and unmating force Unit: kg (lb) | | | |
| | No. of Cts | Mate (max) | Unmate (min) |
| | 9 (size E) | 3.05 (6.74) | 0.36 (0.79) |
| | 15 (size A) | 5.09 (11.24) | 0.46 (1.01) |
| | 25 (size B) | 8.44 (18.66) | 0.81 (1.8) |
| | 37 (size C) | 12.51 (27.65) | 1.1 (2.47) |
| Standard plating thicknesses | | | <ul style="list-style-type: none"> • gold flash • 0.4µm (15µ") gold • 0.76µm (30µ") gold |

DESCRIPTION

These connectors are suitable for compact requirement of modern peripheral equipment.

Special contact design allows usage of standard 1.27mm (.05") flat cable. Suitable with all standard D-Sub hoods.

*Simplify
Your cable
assemblies!*

APPLICATIONS

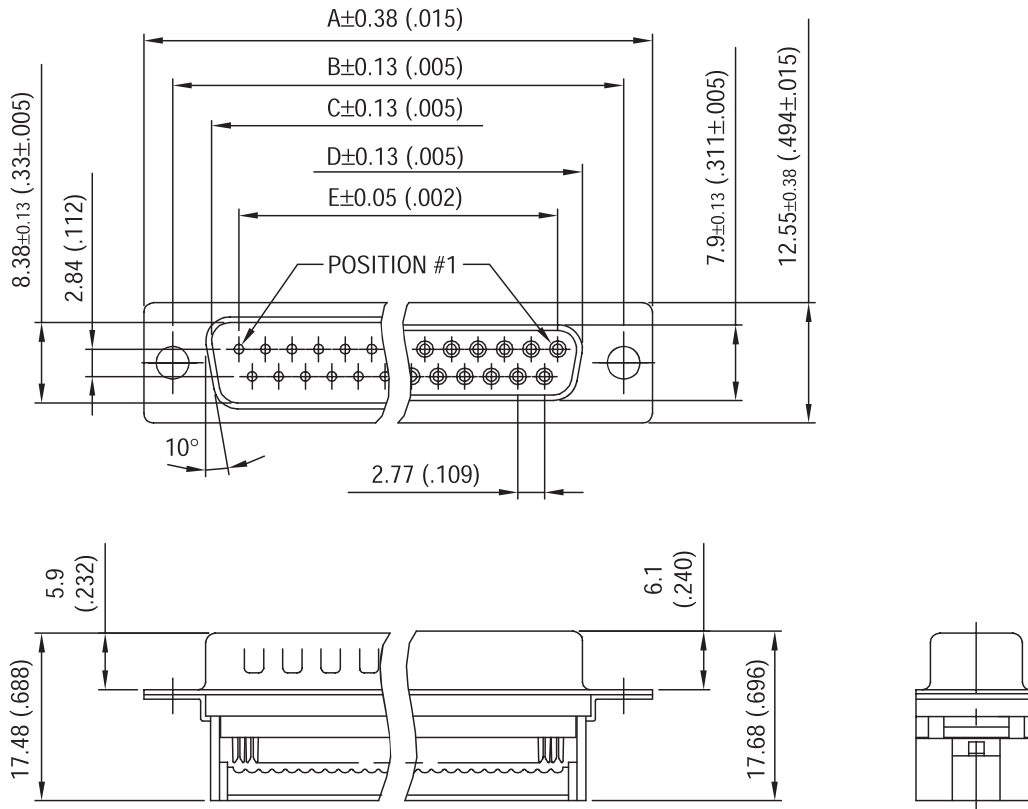
- Industrial
- Telecom
- Any industry standard I / O connections



Amphenol

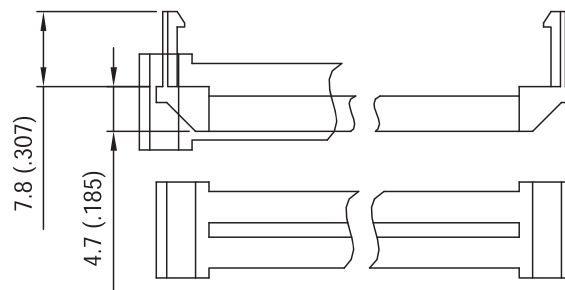
DFR / E12

Shell size dimensions

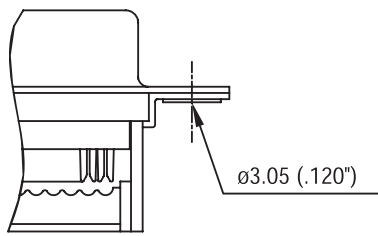


| Nb OF CONTACTS | DIMENSIONS mm (inch) | | | | |
|----------------|----------------------|--------------|--------------|--------------|--------------|
| | A | B | C | D | E |
| 9 | 30.84 (1.21) | 24.99 (.984) | 16.92 (.666) | 16.24 (.639) | 11.09 (.437) |
| 15 | 39.24 (1.54) | 33.32 (1.31) | 24.70 (.972) | 24.56 (.967) | 19.39 (.763) |
| 25 | 53.04 (2.09) | 47.04 (1.85) | 38.96 (1.53) | 38.38 (1.51) | 33.24 (1.31) |
| 37 | 69.32 (2.73) | 63.50 (2.50) | 55.42 (2.18) | 54.76 (2.16) | 49.86 (1.96) |

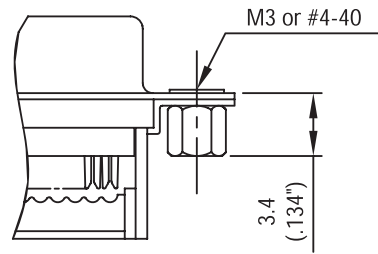
STRAIN RELIEF



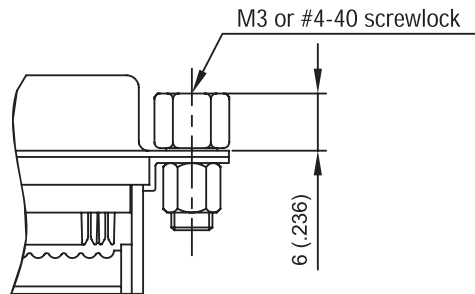
Panel mounting option



Standard rivet $\varnothing 3.05\text{mm}$
no digit

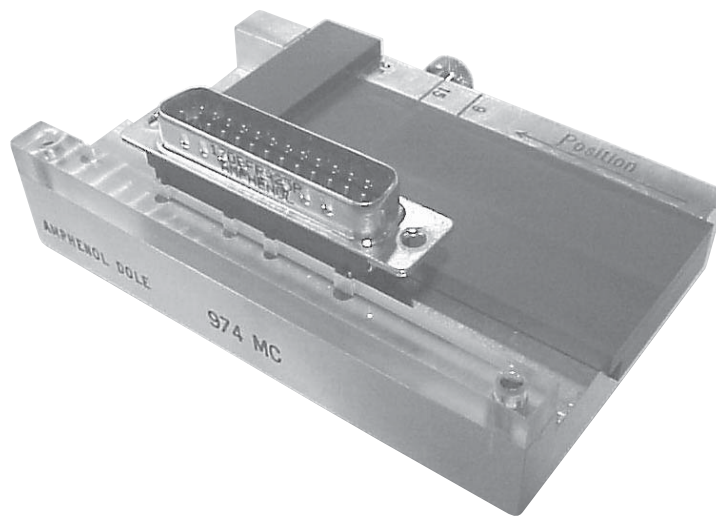


Threaded rear insert
B / D



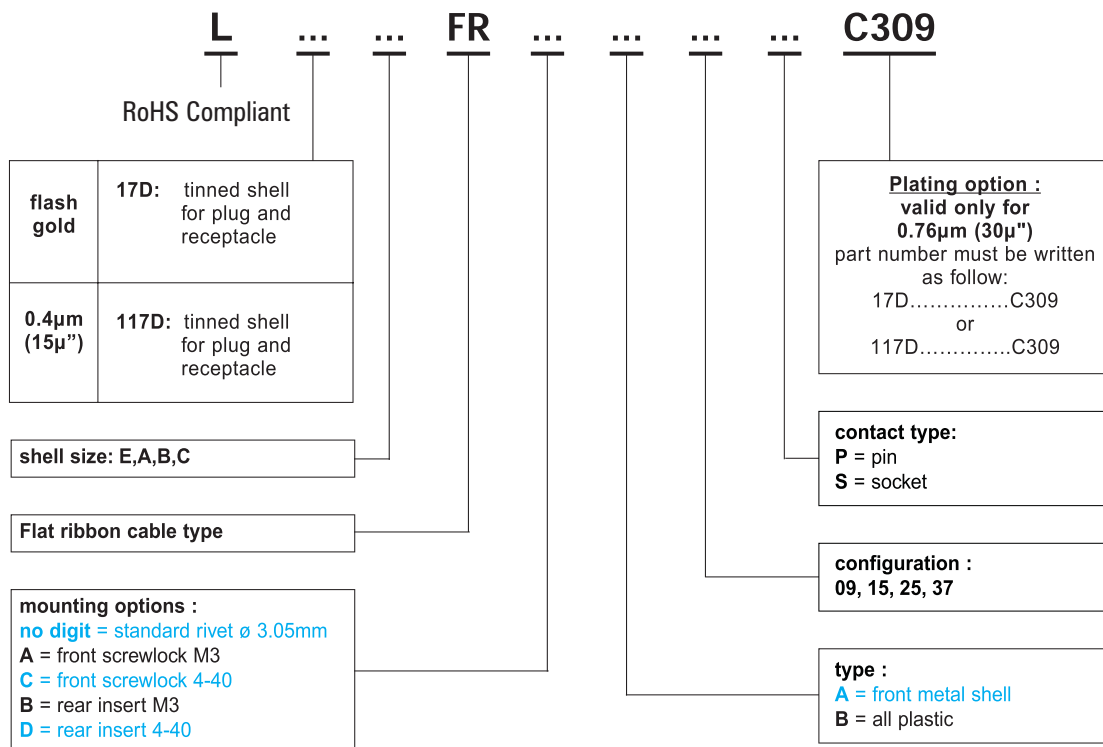
Front female screwlock
A / C

Tool



Support for hand termination tool:
974MC

How to order



■ : Standard options

For special request, please consult factory

Do not hesitate to contact us for further information



Amphenol

Amphenol East Asia Electronic Technology(Shen Zhen)Co., Ltd.

Block A3/A4, The4th Ind.District of Ind.HQ, Dong keng Road, Gong Ming Town , Shen zhen, china

Fax: +86 (0) 755 2754 9955

http: //www.dsubconnector.com

http: //www.amphenol.com.cn

Technical support

Tel: +33 (0) 3 84 85 94 00

+86 (0) 755 2717 7945