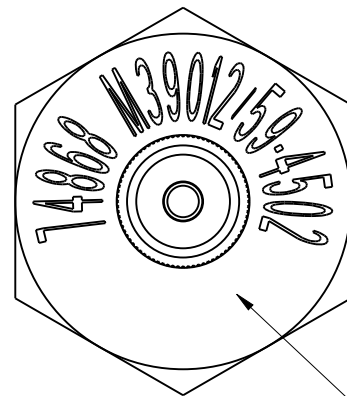


NOTES:

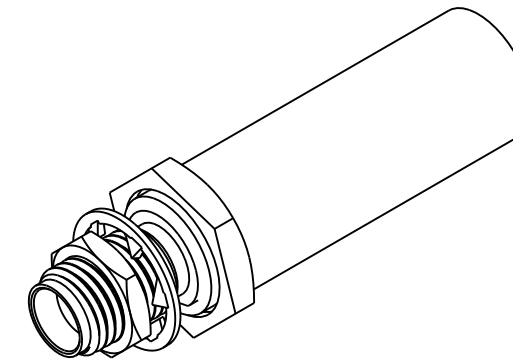
1. MATERIALS AND FINISHES:
 BODY - BRASS, GOLD PLATING
 CONTACT - BERYLLIUM COPPER, GOLD PLATING
 INSULATOR - PTFE
 OUTER FERRULE - COPPER, GOLD PLATING
 NUT - BRASS, GOLD PLATING
 LOCK WASHER - PHOSPHOR BRONZE, GOLD PLATING
2. ELECTRICAL:
 A. IMPEDANCE : 50 OHM
3. MECHANICAL:
 A. DURABILITY : 500 CYCLES MIN
 B. TEMPERATURE RANGE : -65° C TO +85° C
4. PACKAGING:
 A. QUANTITY: SINGLE PACK
 B. MARKING: BAG TO BE MARKED
 "AMPHENOLRF, & 901-291-15, AND DATE CODE"
5. RECOMMENDED CABLE ASSEMBLY INSTRUCTIONS:
 A. TRIM CABLE AS SHOWN.
 B. SLIDE FERRULE AND HEAT SHRINK TUBE ONTO CABLE.
 C. SOLDER OR CRIMP CABLE CENTER CONDUCTOR TO CONTACT USING TOOL NO. M22520/1-01, POSITIONER M22520/1-15.
 D. INSERT CABLE ENTERING CONNECTOR AND BRAID OVER KNURL.
 E. CRIMP FERRULE OVER BRAID WITH AMPHENOL TOOL 227-944 (M22520/5-01) AND DIESET 227-1221-11, CAVITY 'A' (M22520/5-11, CLOSURE 'A')
 F. APPLY HEAT SHRINK TUBE OVER THE OUTER FERRULE.

6 SHOWS CABLE ENTRY DIMENSIONS

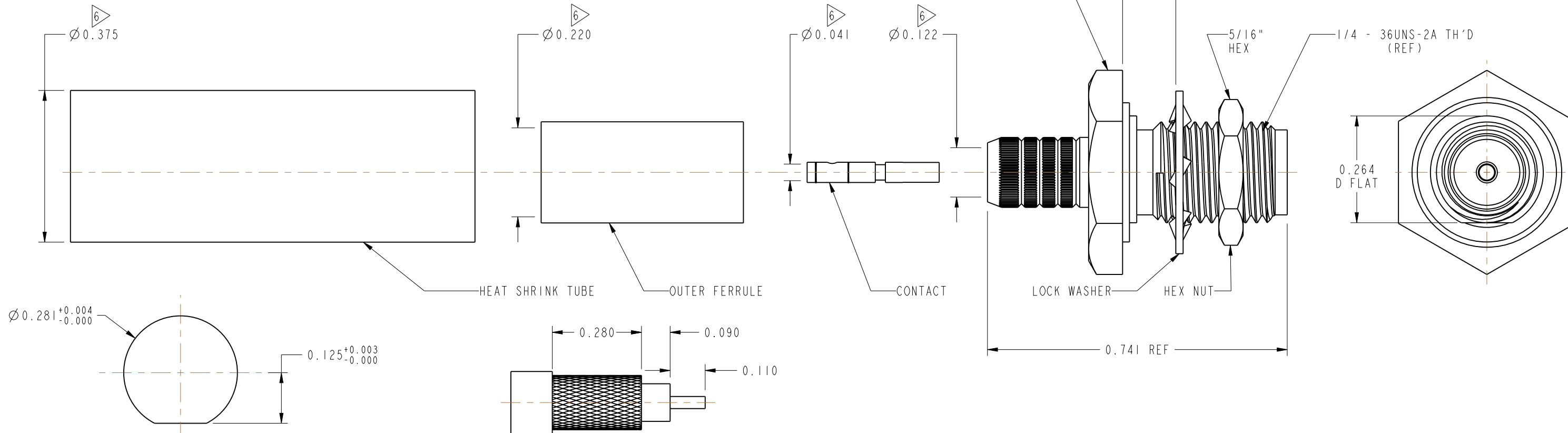
901-291-15		REVISIONS			
DRAWING NO.	REV	DESCRIPTION	DATE	ECO	APPR
THIRD ANGLE PROJ.	A	RELEASED TO MFG			
	U	REDRAWN IN PRO E, ADD COD	7/14/11	48363	RAK
	V	ADD VIEW OF STAMPING	10/13/11	48799	CPM



INK STAMP (AT ASSEMBLY LEVEL)
 (4 DIGIT DATE CODE, YEAR & WEEK)
 (HEAT SHRINK & FERRULE REMOVED)



SCALE 2.000



SCALE 4.000
 RECOMMENDED MOUNTING
 HOLE DETAIL

RECOMMENDED CABLE STRIPPING
 DIMENSIONS

CUSTOMER OUTLINE DRAWING
 ALL OTHER SHEETS ARE FOR INTERNAL USE ONLY

UNLESS OTHERWISE SPECIFIED, DIMENSIONS ARE IN INCHES AND TOLERANCES ARE: 2 PLACE DECIMAL 3 PLACE DECIMAL ANGLES $\pm .015$ (0,381 mm) $\pm .005$ (0,127 mm) $\pm 1^\circ$	MATERIAL	DRAWN ABHAYA KISHORE	DATE 17-Dec-10	TITLE SMA CONNECTOR CRIMP TYPE JACK BULK HEAD MOUNT FOR RG-400/U & RG-142/U CABLE		Amphenol RF Danbury, CT, USA Tainan, Taiwan Shenzhen, China www.amphenolrf.com	
	REFERENCE DOR 309465-51 MIL-C-39012/59-4502	ENGINEER H. PARIKH	DATE 7/14/11				
NOTICE - These drawings, specifications, or other data (1) are, and remain the property of Amphenol Corp. (2) must be returned upon request; and (3) are confidential and not to be disclosed to any person other than those to whom they are given by Amphenol Corp. The furnishing of these drawings, specifications, or other data by Amphenol Corp., or to any other person to anyone for any purpose is not to be regarded by implication or otherwise in any manner licensing, granting rights or permitting such holder or any other person to manufacture, use or sell any product, process or design, patented or otherwise, that may in any way be related to or disclosed by said drawings, specifications, or other data.		APPROVED H. PARIKH	DATE 7/14/11	CODE ID 74868	DWG SIZE B	DRAWING NO. 901-291-15	SCALE: 4.0:1 SHEET 2 OF 2
		CAD FILE					REV U