

4

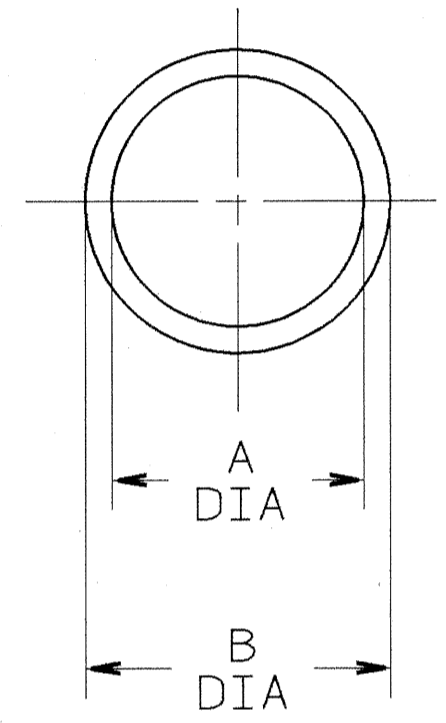
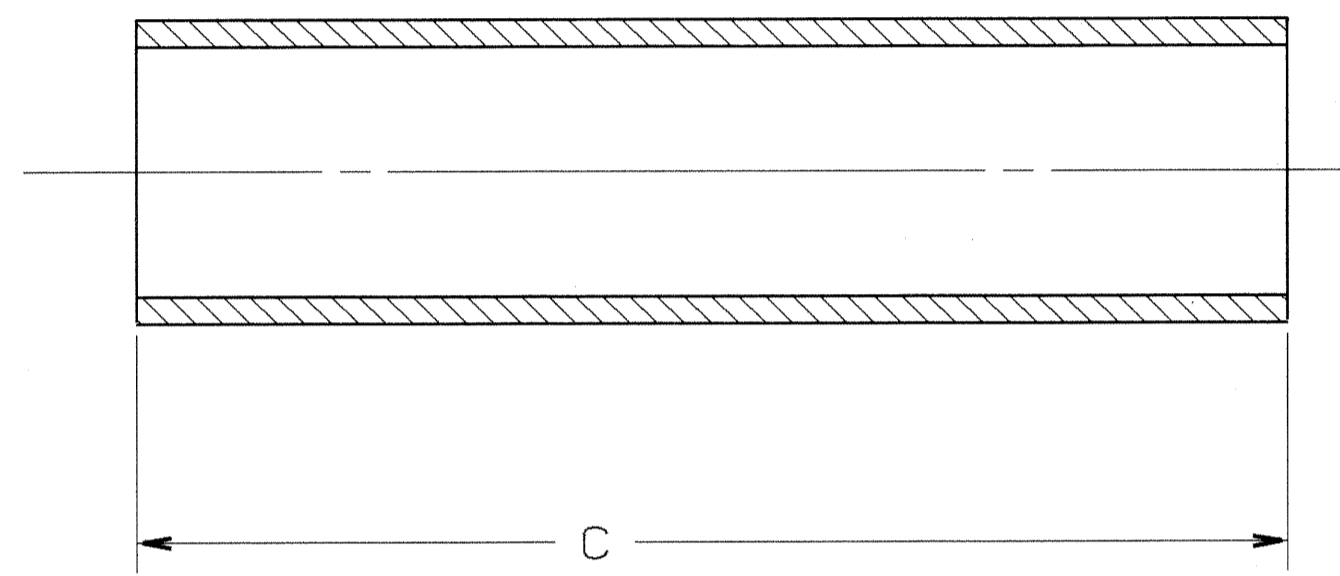
3

2

1

PART NO.	TYPE	A DIA ±.016	B DIA ±.016	C ±.031	MS NUMBER
10-35910-101	I	.125	.210	2.000	MS3420- 3A
-121		.219	.302	2.000	- 4A
-141		.312	.427	2.000	- 6A
-161		.438	.531	2.000	- 8A
-181		.438	.615	2.000	-10A
-201		.541	.740	2.000	-12A
-241		.750	.927	2.000	-16A
-242		.750	.928	3.000	
-301		.938	1.115	2.000	MS3420-18A
-321		.938	1.240	2.000	-20A
-361		1.125	1.365	2.000	-24A
-401		1.250	1.614	2.000	-28A
-441		1.625	1.865	2.000	-32A
-481		1.875	2.365	2.000	-40A

REVISIONS				
ZONE	LTR	DESCRIPTION	DATE	APPROVED
	B	(CLII) REDRAWN, SAME SIZE, STANDARDIZED SEE CHANGE NOTICE ECN: 76686-1	1/7/86 BIVIANO	<i>[Signature]</i>
	C	(CLII) SEE CHANGE NOTICE ECN: 27564	3-8-93 DE MATTEO	<i>[Signature]</i>



TYPE I

1. MATERIAL SPEC: RUBBER PER MIL-STD-417  
TYPE SC 515 A<sub>1</sub> B<sub>1</sub> C<sub>1</sub> E<sub>3</sub> F<sub>2</sub> GM.

NOTES:

THE USE OF THIS DOCUMENT IS UNLIMITED.  
HOWEVER, DOCUMENTS REFERENCED HEREON  
MAY CONTAIN LIMITED RIGHTS DATA.

UNLESS OTHERWISE SPECIFIED  
LINEAR DIMENSIONS ARE IN  
INCHES.  
TOLERANCES: .XXX±.010,  
.XX ±.03, .X ±.1,  
ANGLES ±2°.  
OTHER STANDARDS PER 9-3800  
AND DOD-D-1000.

FIND NO.	QTY REQD.	FSCM NO.	PART NUMBER	DESCRIPTION	NOTE REF.
PARTS LIST					
SPECIFICATIONS		SIGNATURES		DATES	
MATERIAL SPEC.		HENNEASEY		3/23/50	
SEE NOTE 1		<i>[Signature]</i>		3/27/86	
PROCESS SPEC.		<i>[Signature]</i>		3-26-86	
		<i>[Signature]</i>		3-27-86	
		ORIGINAL PREPARED DATE			
		SIZE	FSCM NO.	REV.	
		C	77820	C	
		SCALE	NONE	WT.	REF
		10-35910		SHEET 1 OF 2	

COMPUTER GENERATED DRAWING.

TAB.

D

D

C

C

B

B

A

A

10-35910