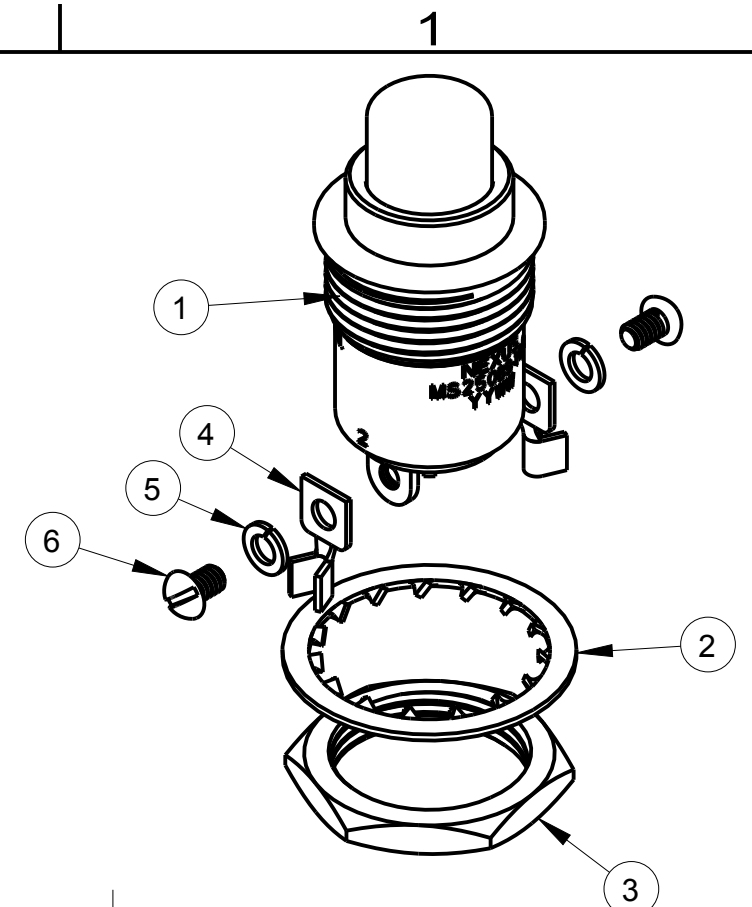
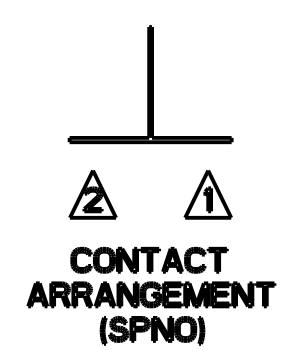


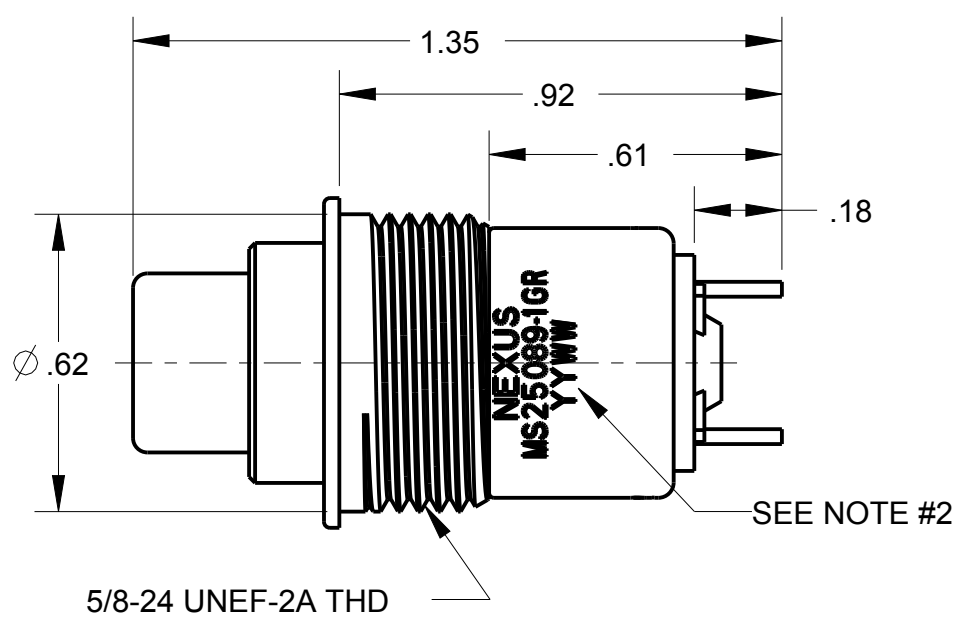
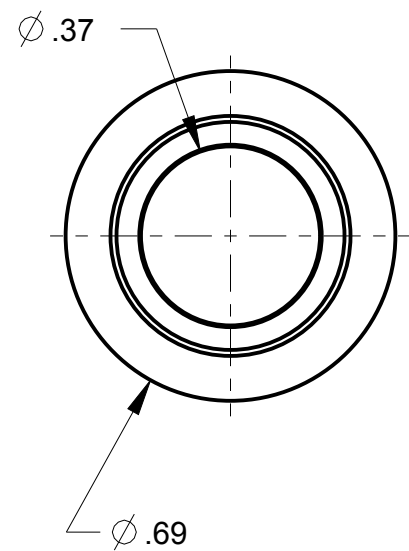
ITEM #	PART #	NX301GB1R-00 QTY	NX301GB1R-60 QTY	NX301GB1R-61 QTY	DESCRIPTION
1	NX301GB1R	1	1	1	SWITCH MOMENTARY RED BUTTON
2	SW-200-35	----	1	1	LOCK WASHER
3	SW-200-34	----	1	1	NUT
4	SW-200-23	----	----	2	TERMINAL LUG
5	SW-200-25	----	----	2	#2 LOCK WASHER
6	SW-200-72	----	----	2	SCREW

B NX301GB1R-XX



NOTES:
 1) DUSTPROOF "SERIES 30" MOMENTARY SWITCH
 CONTACT ARRANGEMENT: SPNO - SINGLE POLE, NORMALLY OPEN
 BUTTON #1, COLOR: RED
 ADAPTER TYPE: "G"
 2) "YYWW" IS THE DATE CODE

SPECIFICATIONS;
 AC RATING: 10 A @115VAC (RESISTIVE LOAD)
 5A @ 115VAC (INDUCTIVE LOAD)
 3A @115VAC (LAMP LOAD)
 DC RATING: 10A @ 28VDC (RESISTIVE LOAD)
 5A @ 28VDC (INDUCTIVE LOAD)
 3A @ 28VDC (LAMP LOAD)
 MECHANICAL LIFE: 500,000 CYCLES
 ACTION: MOMENTARY SNAP
 OPERATING FORCE: 3-5 LBS MOMENTARY
 WEIGHT: .05 LBS MAX
 CASE: ALUMINUM ALLOY 2011-T3, CLEAR ANODIZED
 IAW MIL-A-8525
 PLUNGER: GLASS FILLED NYLON
 BODY: DIALLY PHTHALATE IAW MIL-M-14
 TERMINALS: THREADED #2-56 NC-28



THIS DOCUMENT CONTAINS PROPRIETARY INFORMATION OF NEXUS, INCORPORATED AND SUCH INFORMATION MAY NOT BE DISCLOSED TO OTHERS FOR ANY PURPOSE OR USED FOR ANY PURPOSE WITHOUT THE WRITTEN CONSENT OF NEXUS.

LET.	REVISION	CN #	DATE	CHK.
A	INITIAL RELEASE		4/17 2016	HR

DWN.BY HR	DATE 4/17/16	MATERIAL	
CHECKED BY	DATE	FINISH	
APPR.BY	DATE	WEIGHT —	SCALE = 1.00 :1
UNLESS OTHERWISE SPECIFIED: DIMENSIONS ARE IN INCHES &/OR (mm)		NEXUS STAMFORD, CONN	
TOLERANCES: DECIMAL: .XX[X.X] .XXX[X.XX] ± .0X[0.X] ± .00X[0.0X]			
FRACTION: X/X ± X/XX		TITLE SWITCH SPNO MOMENTARY	
ANGLES: X ± X°		DO NOT SCALE DWG.	SHEET 1 OF 1
		SIZE B	DWG. NO. NX301GB1R-XX