

# ATBATTERY-CASE-4AAA

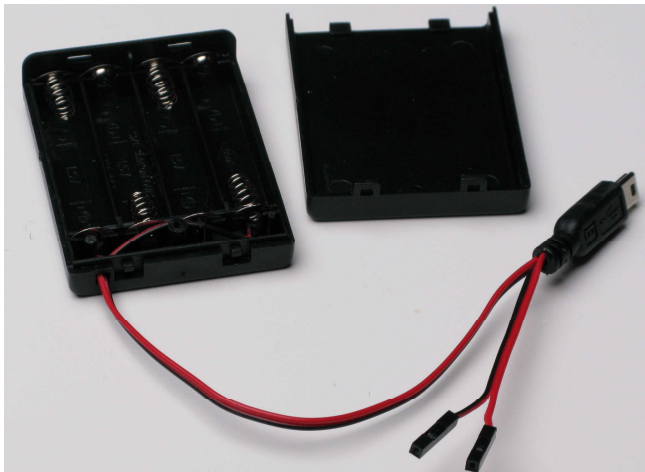
## Getting Started Guide

### Introduction

---



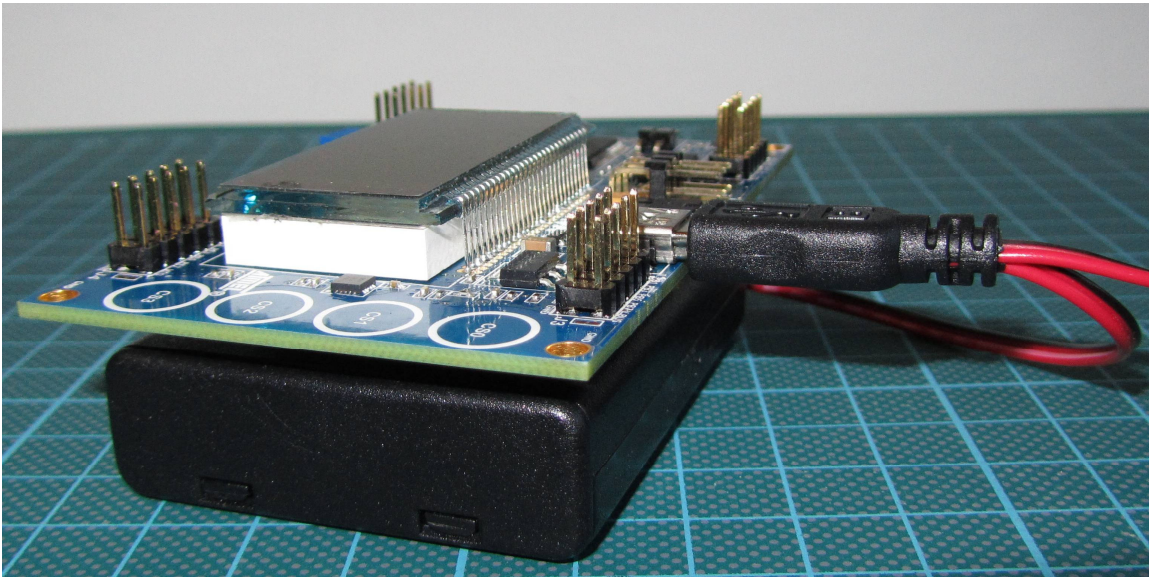
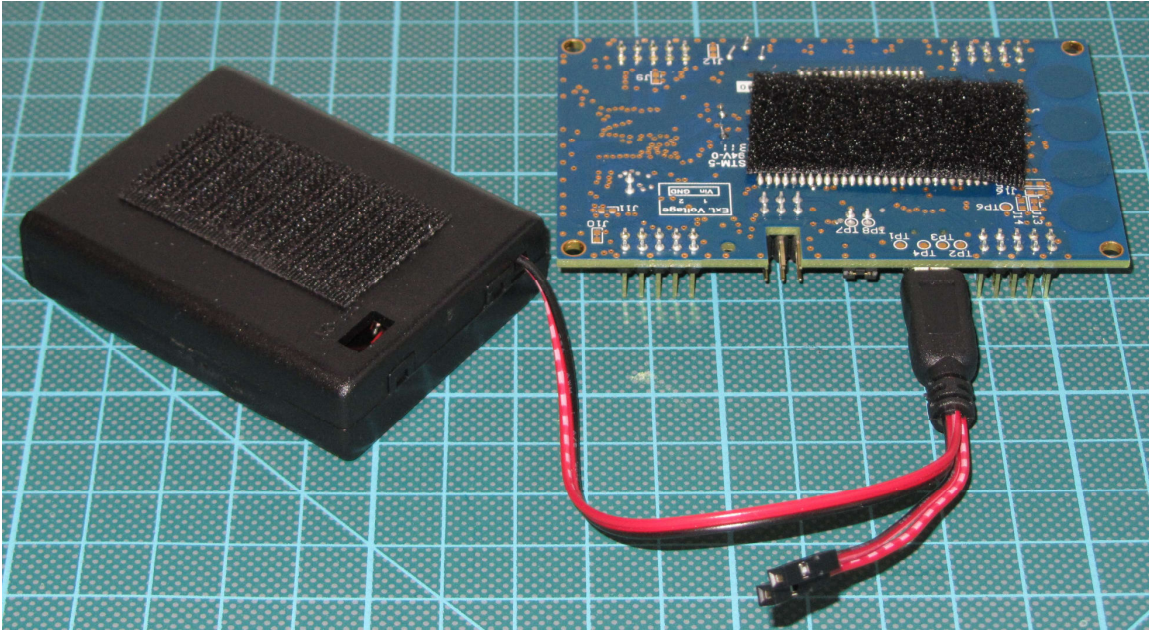
The ATBATTERY-CASE-4AAA is a battery case with room for 4 AAA type batteries intended for use with Atmel development kits when portable power is needed. The comply with the USB 2.0 standard rechargeable batteries must be used in order to get an output of less than 5.5V



## Power provided via mini USB connector

---

Power supplied via mini USB connector and battery pack connected to kit backside with “Velcro”.



## Power provided via GND and VCC pin

The Battery case connected to kit with GND (black wire) and VCC (red wire) pin.

