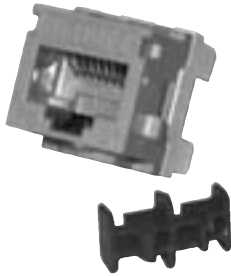


Workstation Outlets

GigaFlex PS6+ Modules Category 6

AX101067 GigaFlex PS6+Module



GigaFlex PS6+ Module

The **GigaFlex PS6+ Module** is a punch down UTP connector based on a patented Encapsulated Lead Frame technology ensuring excellent long-term reliability as well as extremely stable transmission performance. The unmatched Beyond Cat6 performance exceeds all parameters specified in the Category 6 standard. All performance characteristics have been set to guarantee transmission performance up to 300 MHz and a data-rate of up to 4.8 Gb/s.

The GigaFlex PS6+ is the module of choice for terminating UTP cables into the MediaFlex and Interface Outlet Series. It can also be mixed and matched with a wide variety of MDVO adapters, boxes and patch panels to suit practically any installation configuration for workstation outlet, consolidation point and telecommunications room applications.

A keystone-style is also available for terminating UTP cables into keystone-style mounting hardware. It can be easily snapped into simple sheet metal cut-outs (panel mounting) for installation into consolidation point or multi-user custom-built devices.

Also available is the GigaFlex PS6+ Module, Clipsal-style which is fully compatible with Clipsal faceplates and mounting hardware.

| Description | Belden Part Number | | |
|-------------|--------------------|----------------|---------------|
| | MDVO-Style | Keystone-Style | Clipsal-Style |

Workstation Outlets

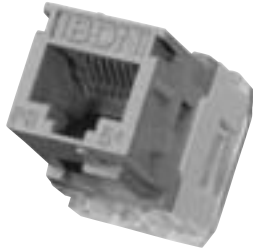
| GigaFlex PS6+ Module | | | |
|----------------------|-----------------|-----------------|-----------------|
| T568A/B, Gray | AX101063 | AX101318 | AX101340 |
| T568A/B, Almond | AX101064 | AX101319 | AX101341 |
| T568A/B, White | AX101065 | AX101320 | AX101342 |
| T568A/B, Black | AX101066 | AX101321 | AX101343 |
| T568A/B, Orange | AX101067 | AX101322 | AX101344 |
| T568A/B, Red | AX101068 | AX101323 | AX101345 |
| T568A/B, Yellow | AX101069 | AX101324 | AX101346 |
| T568A/B, Green | AX101070 | AX101325 | AX101347 |
| T568A/B, Blue | AX101071 | AX101326 | AX101348 |
| T568A/B, Purple | AX101072 | AX101327 | AX101349 |
| T568A/B, Brown | AX101073 | AX101328 | AX101350 |
| T568A/B, Ivory | AX102563 | | |

These products are in the process of being assessed for RoHS compliance. Please check our Web Site for the most current RoHS status.

Workstation Outlets

GigaFlex PS5E Modules Category 5E and Flex Modules, USOC-coded

AX101051 GigaFlex PS5E Module



AX101037 Flex Module, USOC-coded



GigaFlex PS5E Module

The **GigaFlex PS5E Module** is a punch down UTP connector based on a patented Encapsulated Lead Frame technology ensuring excellent long term reliability as well as extremely stable transmission performance. The PS5E-rated performance exceeds all requirements specified in the Category 5e standard. All performance parameters including NEXT, FEXT, Attenuation and Return Loss have been set to guarantee transmission performance up to 160 MHz and a data-rate of up to 1.2 Gb/s.

The GigaFlex PS5E is the module of choice for terminating UTP cables into the MediaFlex and Interface Outlet Series. It can also be mixed and matched with a wide variety of MDVO adapters, boxes and patch panels to suit practically any installation configuration for workstation outlet, consolidation point and telecommunications room applications.

A keystone-style is also available for terminating UTP cables into keystone-style mounting hardware. It can be easily snapped into simple sheet metal cut-outs (panel mounting) for installation into consolidation point or multi-user custom-built devices.

Flex Module, USOC-coded

The **Flex Module USOC-coded** is a punch down UTP connector that has a narrower plug entrance and a USOC 6-pin color code in the back. These modules are used for voice applications and are designed to prevent connecting the computer into the analog phone jack, which may cause damages to the electronics.

The Flex Module is the module of choice for voice applications in the MediaFlex and Interface Outlet Series. It can also be mixed and matched with a wide variety of MDVO adapters, boxes and patch panels to suit practically any installation configuration for workstation outlet, consolidation point and telecommunications rooms applications.

| Description | Belden Part Number | |
|-------------|--------------------|----------------|
| | MDVO-Style | Keystone-Style |

Workstation Outlets

| GigaFlex PS5E Module | | |
|-------------------------------------|----------|----------|
| T568A/B, Gray | AX101044 | AX101307 |
| T568A/B, Almond | AX101045 | AX101308 |
| T568A/B, White | AX101046 | AX101309 |
| T568A/B, Black | AX101047 | AX101310 |
| T568A/B, Orange | AX101048 | AX101311 |
| T568A/B, Red | AX101049 | AX101312 |
| T568A/B, Yellow | AX101050 | AX101313 |
| T568A/B, Green | AX101051 | AX101314 |
| T568A/B, Blue | AX101052 | AX101315 |
| T568A/B, Purple | AX101053 | AX101316 |
| T568A/B, Brown | AX101054 | AX101317 |
| T568A/B, Ivory | AX102564 | |
| Flex Module, USOC-coded, 6-position | | |
| Gray | AX101033 | |
| Almond | AX101034 | |
| White | AX101035 | |
| Black | AX101036 | |
| Orange | AX101037 | |
| Red | AX101038 | |
| Yellow | AX101039 | |
| Green | AX101040 | |
| Blue | AX101041 | |
| Purple | AX101042 | |
| Brown | AX101043 | |
| Ivory | AX102565 | |

These products are in the process of being assessed for RoHS compliance. Please check our Web Site for the most current RoHS status.



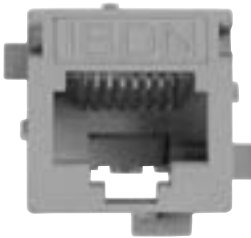
Workstation Outlets

EZ-MDVO PS5E Modules Category 5E and EZ-MDVO Modules, USOC-coded

AX100654 EZ-MDVO PS5E Module



AX100177 EZ-MDVO Module, USOC-coded



EZ-MDVO PS5E Module

The **EZ-MDVO Module** is built with a patented lead frame design and encapsulated insulation displacement contacts, ensuring reliable connections and performance well above Category 5E standards. The EZ-MDVO module termination cap is what is so unique about this product. It allows for a simple and fast “press-fit” installation while ensuring consistent wire termination every time it is snap-locked. The module termination cap is color-coded to facilitate wire arrangement and speed up installation time. The termination cap is printed with the T568A/B color-codes. The EZ-MDVO Modules can be mixed and matched with a wide variety of MediaFlex, Interface and MDVO-style faceplates, adapters and boxes to suit practically any installation configuration for workstation outlet installations.

A keystone-style is also available for terminating UTP cables into keystone-style mounting hardware. It can be easily snapped into simple sheet metal cut-outs (panel mounting) for installation into consolidation point or multi-user custom-built devices. Clipsal-style EZ-MDVO Modules are available for installations using commercially available Clipsal faceplates and HPM-style EZ-MDVO Modules are available for installations using commercially available HPM faceplates.

EZ-MDVO Module, USOC-coded

The **EZ-MDVO Module USOC-coded** has a narrower plug entrance and is designed to be used for voice applications. These modules prevent connecting the computer into the analog phone jack, which may cause damages to the electronics. Also available is the EZ-MDVO Module, USOC-coded keystone style.

| Description | Belden Part Number | | | |
|-------------|--------------------|----------------|---------------|-----------|
| | MDVO-Style | Keystone-Style | Clipsal-Style | HPM-Style |

Workstation Outlets

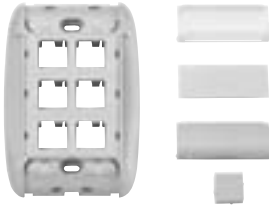
| EZ-MDVO PS5E Module | | | | |
|--|----------|----------|----------|----------|
| T568A/B coded, Gray | AX100645 | AX100577 | AX100678 | AX100667 |
| T568A/B coded, Almond | AX100646 | AX100578 | AX100679 | AX100668 |
| T568A/B coded, White | AX100647 | AX100579 | AX100680 | AX100669 |
| T568A/B coded, Black | AX100648 | AX100580 | AX100681 | AX100670 |
| T568A/B coded, Orange | AX100649 | AX100581 | AX100682 | AX100671 |
| T568A/B coded, Red | AX100650 | AX100582 | AX100683 | AX100672 |
| T568A/B coded, Yellow | AX100651 | AX100583 | AX100684 | AX100673 |
| T568A/B coded, Green | AX100652 | AX100584 | AX100685 | AX100674 |
| T568A/B coded, Blue | AX100653 | AX100585 | AX100686 | AX100675 |
| T568A/B coded, Purple | AX100654 | AX100586 | AX100687 | AX100676 |
| T568A/B coded, Brown | AX100655 | AX100587 | AX100688 | AX100677 |
| EZ-MDVO Module, USOC-coded, 6 position | | | | |
| Gray | AX100171 | AX100588 | | |
| Almond | AX100172 | AX100589 | | |
| White | AX100173 | AX100590 | | |
| Black | AX100174 | AX100591 | | |
| Orange | AX100175 | AX100592 | | |
| Red | AX100176 | AX100593 | | |
| Yellow | AX100177 | AX100594 | | |
| Green | AX100178 | AX100595 | | |
| Blue | AX100179 | AX100596 | | |
| Purple | AX100180 | AX100597 | | |
| Brown | AX100181 | AX100598 | | |

These products are in the process of being assessed for RoHS compliance. Please check our Web Site for the most current RoHS status.

Workstation Outlets

MediaFlex Faceplate Kits and MediaFlex Plates

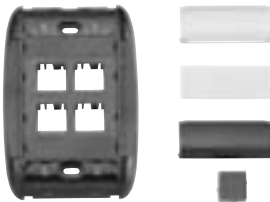
AX101786 MediaFlex Faceplate Kit, 6-port



AX101779 MediaFlex Faceplate Kit, 2-port



AX101785 MediaFlex Faceplate Kit, 4-port



AX101748 MediaFlex Plate, Single Gang



AX101869 MediaFlex Plate, Double Gang



MediaFlex Faceplate Kit

MediaFlex Plates and Inserts snap together to create a full line of modular workstation outlets. This product line, called the MediaFlex Modular Outlet Series, has been designed with the help of industrial designers as well as other professionals in the industry in order to combine flexibility, ease of use and high-tech aesthetics for work area installations.

Even though the MediaFlex series is a modular outlet system, ease and flexibility in ordering and inventory management are also considered with the offering of pre-configured faceplate kits (includes plate, flush MDVO-style inserts, filler inserts, MDVO blank, labeling window covers, labeling paper and all necessary mounting screws).

MediaFlex Plate

MediaFlex Plates are one part of the comprehensive line of plates and inserts that snap together to create a full line of modular workstation outlets.

MediaFlex Plates can be mounted over standard NEMA type outlet boxes and rings to provide support for a variety of MediaFlex Adapters and Inserts. The fully modular construction combined with the front access design provides extensive configuration flexibility for current and future network needs. MediaFlex Plates are available in Single gang and Double gang configurations.

The Double gang faceplate comes with a stand-off ring included in the package. This ring allows for easy mounting with virtually any industry electrical box or mud/adaptor rings, therefore providing added installation flexibility.

Each plate has the capacity of up to 6 ports per Single gang and 12 ports per Double gang.

| Description | Belden Part Number | | |
|-------------|--------------------|--------------|--------------|
| | 2-Port Flush | 4-Port Flush | 6-Port Flush |

Workstation Outlets

| MediaFlex Faceplate Kit | | | |
|-------------------------|----------|----------|----------|
| Gray | AX101778 | AX101782 | AX101786 |
| Almond | AX101779 | AX101783 | AX101787 |
| Elec. White | AX101780 | AX101784 | AX101788 |
| Black | AX101781 | AX101785 | AX101789 |
| White | AX102621 | AX102622 | AX102623 |
| Ivory | AX102566 | AX102567 | AX102568 |

| Description | Belden Part Number | |
|-------------|--------------------|-------------|
| | Single Gang | Double Gang |

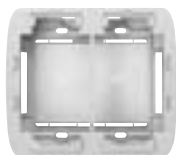
| MediaFlex Plate | | |
|-----------------|----------|----------|
| Gray | AX101745 | AX101869 |
| Almond | AX101746 | AX101870 |
| Elec. White | AX101747 | AX101871 |
| Black | AX101748 | AX101872 |
| White | AX102608 | AX102609 |
| Ivory | AX102569 | AX102570 |

These products are in the process of being assessed for RoHS compliance. Please check our Web Site for the most current RoHS status.

Workstation Outlets

MediaFlex Adapter Boxes and MediaFlex Inserts

AX101874 MediaFlex Adapter Box, Double Gang



MediaFlex Surface Adapter Box

MediaFlex Surface Adapter Boxes are one part of the comprehensive line of plates and inserts that snap together to create a full line of modular workstation outlets.

MediaFlex Surface Adapter Boxes can be mounted over standard NEMA type outlet boxes and rings to provide support for the MediaFlex plates. The MediaFlex Surface Adapter Boxes are available as a Double gang configuration. The Double gang box allows more room for cable management and bend radius control.

| Description | Belden Part Number | | | | | |
|-------------|--------------------|--------|-------------|-------|-------|-------|
| | Gray | Almond | Elec. White | Black | White | Ivory |

Workstation Outlets

| MediaFlex Adapter Box | | | | | | |
|-----------------------|----------|----------|----------|----------|----------|----------|
| Single Gang | AX102480 | AX102481 | AX102482 | AX102483 | AX102484 | AX102485 |
| Double Gang | AX101873 | AX101874 | AX101875 | AX101876 | AX102610 | AX102571 |

AX101756 MediaFlex MDVO (style) Insert, 2-port, Angled



MediaFlex Insert

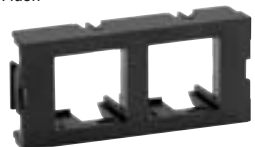
MediaFlex Inserts provide optimum flexibility in configuring multimedia workstation outlets that respond to any present or future network needs. MediaFlex MDVO-style Inserts along with MediaFlex Filler Inserts and MediaFlex GigaFlex Inserts allow for the easy configuration of outlets. All inserts are front loaded and easily snapped in and out of the MediaFlex Plates for simple installation and maintenance.

MediaFlex MDVO-style Inserts are available in a 2-port configuration in both Flush and Angled versions. They are compatible with all GigaFlex and MDVO Modules (EZ-MDVO and Multimedia). The inserts are two units high for the flush version and three units high for the angled version. Therefore three flush inserts or two angled inserts are required to fully populate a Single gang MediaFlex Plate.

MediaFlex GigaFlex Inserts are available in a 2-port configuration in both PS5E (Category 5E) and PS6+ (Beyond Category 6) performance levels. The inserts are two units high, therefore three inserts can be used to fully populate a Single gang MediaFlex Plate making up a 6-port outlet.

MediaFlex Filler Inserts are used to fill the unused spaces in low density workstation outlets. They are available in one unit and two unit sizes.

AX101752 MediaFlex MDVO (style) Insert, 2-port, Flush



AX101760 MediaFlex Filler Insert, 1-unit



AX101764 MediaFlex Filler Insert, 2-unit



AX101768 PS6+ MediaFlex GigaFlex Insert, 2-port



| Description | Belden Part Number | |
|-------------|--------------------|--------|
| | Flush | Angled |

Workstation Outlets

| MediaFlex MDVO (style) Insert | | |
|--------------------------------------|----------|----------|
| 2-port, Gray, bag of 10 units | AX101749 | AX101753 |
| 2-port, Almond, bag of 10 units | AX101750 | AX101754 |
| 2-port, Elec. White, bag of 10 units | AX101751 | AX101755 |
| 2-port, Black, bag of 10 units | AX101752 | AX101756 |
| 2-port, White, bag of 10 units | AX102612 | AX102613 |
| 2-port, Ivory, bag of 10 units | AX102572 | AX102573 |

| Description | Belden Part Number | |
|-------------|--------------------|------|
| | PS6+ | PS5E |

| MediaFlex GigaFlex Insert | | |
|---------------------------|----------|----------|
| 2-port, Gray | AX101765 | AX101769 |
| 2-port, Almond | AX101766 | AX101770 |
| 2-port, Elec. White | AX101767 | AX101771 |
| 2-port, Black | AX101768 | AX101772 |
| 2-port, Ivory | AX102574 | AX102575 |

| Description | Belden Part Number | |
|-------------|--------------------|--------|
| | 1-Unit | 2-Unit |

| MediaFlex Filler Insert | | |
|------------------------------|----------|----------|
| Gray, bag of 10 units | AX101757 | AX101761 |
| Almond, bag of 10 units | AX101758 | AX101762 |
| Elec. White, bag of 10 units | AX101759 | AX101763 |
| Black, bag of 10 units | AX101760 | AX101764 |
| White, bag of 10 units | AX102614 | AX102615 |
| Ivory, bag of 10 units | AX102576 | AX102577 |

These products are in the process of being assessed for RoHS compliance. Please check our Web Site for the most current RoHS status.



Workstation Outlets

MediaFlex Inserts (continued) and Accessories

AX101878 MediaFlex RCA Insert, 3-port, Angled



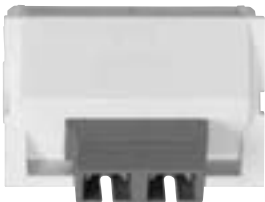
AX101882 MediaFlex SVHS Insert, 1-port, Angled



AX101886 MediaFlex SVGA Insert, 1-port, Angled



AX101937 MediaFlex SC Duplex Insert, Angled



AX101777 Labeling Window Cover



AX101790 Dust Cover



MediaFlex Multimedia Insert

MediaFlex Multimedia Inserts provide optimum flexibility in configuring multimedia workstation outlets that respond to any present or future network needs. MediaFlex Multimedia Inserts along with other MediaFlex Inserts allow for easy configuration of outlets. All inserts are front loaded and easily snapped in and out of the MediaFlex Plates for easy installation and maintenance.

MediaFlex Multimedia inserts include the following products:

- 3-Port RCA insert with IDC termination
- SVHS insert with IDC termination, and feedthrough
- SVGA (DB15) insert with IDC termination
- SC Duplex inserts in MM and SM

MediaFlex Multimedia Inserts are available in Angled versions only in order to allow for proper management of cable bend radius. The inserts are three units high, therefore two inserts are required to fully populate a Single gang faceplate and four inserts will fully populate a Double gang faceplate.

Labeling Window Cover/Dust Cover

MediaFlex Accessories include Labeling Window Covers used with the MediaFlex faceplates and Dust Covers used with the MediaFlex GigaFlex Inserts. Dust Covers can also be used with standard GigaFlex and EZ-MDVO UTP Modules.

| Description | Belden Part Number |
|--|--------------------|
| MediaFlex Multimedia Insert | |
| 3-port RCA, Gray | AX101877 |
| 3-port RCA, Almond | AX101878 |
| 3-port RCA, Elec. White | AX101879 |
| 3-port RCA, Black | AX101880 |
| 3-port RCA, White | AX102616 |
| 3-port RCA, Ivory | AX102578 |
| 1-port SVHS, Gray | AX101881 |
| 1-port SVHS, Almond | AX101882 |
| 1-port SVHS, Elec. White | AX101883 |
| 1-port SVHS, Black | AX101884 |
| 1-port SVHS, White | AX102617 |
| 1-port SVHS, Ivory | AX102579 |
| 1-port SVGA, Gray | AX101885 |
| 1-port SVGA, Almond | AX101886 |
| 1-port SVGA, Elec. White | AX101887 |
| 1-port SVGA, Black | AX101888 |
| 1-port SVGA, White | AX102618 |
| 1-port SVGA, Ivory | AX102580 |
| SVGA Feedthrough, Gray | AX102334 |
| SVGA Feedthrough, Almond | AX102335 |
| SVGA Feedthrough, Elec. White | AX102336 |
| SVGA Feedthrough, Black | AX102337 |
| SVGA Feedthrough, White | AX102630 |
| SVGA Feedthrough, Ivory | AX102581 |
| SC Duplex Single-mode, Gray | AX101935 |
| SC Duplex Single-mode, Almond | AX101936 |
| SC Duplex Single-mode, Elec. White | AX101937 |
| SC Duplex Single-mode, Black | AX101938 |
| SC Duplex Single-mode, White | AX102619 |
| SC Duplex Single-mode, Ivory | AX102649 |
| SC Duplex Multimode, Gray | AX101939 |
| SC Duplex Multimode, Almond | AX101940 |
| SC Duplex Multimode, Elec. White | AX101941 |
| SC Duplex Multimode, Black | AX101942 |
| SC Duplex Multimode, White | AX102620 |
| SC Duplex Multimode, Ivory | AX102650 |
| MediaFlex Accessories | |
| Window Cover, Clear, bag of 25 units | AX101773 |
| Window Cover, Gray, bag of 25 units | AX101774 |
| Window Cover, Almond, bag of 25 units | AX101775 |
| Window Cover, Elec. White, bag of 25 units | AX101776 |
| Window Cover, Black, bag of 25 units | AX101777 |
| Dust Cover, Clear, bag of 50 units | AX101790 |

These products are in the process of being assessed for RoHS compliance. Please check our Web Site for the most current RoHS status.

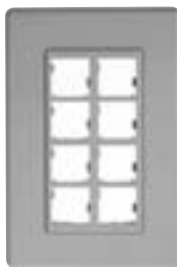
Workstation Outlets

MDVO Faceplates Flush and Angled

A0405257 MDVO Faceplate, 1-port



A0405294 MDVO Faceplate, 8-port



A0620807 MDVO Faceplate, 12-port



A0645267 MDVO Angled Entry Faceplate, shown here with modules



MDVO Faceplate, Flush

MDVO Faceplates flush combine ease of use and aesthetics in work area installations. The Single gang faceplates are available in 1-port and 8-port configurations, Double gang faceplates are configured for 12-ports. The Single gang faceplates can fit over the Interface Surface Adapter Boxes for surface mount installations.

MDVO faceplates are suitable for use with EZ-MDVO and MDVO Multimedia Modules.

MDVO Angled Entry Faceplate

The **MDVO Angled Entry Faceplate** offers better patch cord protection than traditional faceplates and optimizes patch cord bend radius control. The MDVO Angled Entry Faceplate can accept up to four EZ-MDVO or MDVO Multimedia Modules. The faceplate can be attached to standard electrical boxes or wall-mounting hardware for flush-mount installations. The faceplate can also fit over the Interface Surface Adapter Box for surface mount installations.

| Description | Belden Part Number |
|-------------|--------------------|
|-------------|--------------------|

Workstation Outlets

| MDVO Faceplate | |
|-------------------------------------|----------|
| Flush, 1-port, Single Gang, Gray | A0405255 |
| Flush, 1-port, Single Gang, Almond | A0405256 |
| Flush, 1-port, Single Gang, White | A0405257 |
| Flush, 1-port, Single Gang, Black | A0405258 |
| Flush, 1-port, Single Gang, Ivory | AX102585 |
| Flush, 8-port, Single Gang, Gray | A0405294 |
| Flush, 8-port, Single Gang, Almond | A0405295 |
| Flush, 8-port, Single Gang, White | A0405296 |
| Flush, 8-port, Single Gang, Black | A0405298 |
| Flush, 8-port, Single Gang, Ivory | AX102586 |
| Flush, 12-port, Double Gang, Gray | A0620806 |
| Flush, 12-port, Double Gang, Almond | A0620807 |
| Flush, 12-port, Double Gang, White | A0620808 |
| Flush, 12-port, Double Gang, Black | A0620809 |
| Flush, 12-port, Double Gang, Ivory | AX102587 |
| MDVO Angled Entry Faceplate | |
| 4-port, Gray | A0645267 |
| 4-port, Almond | A0645268 |
| 4-port, White | A0645269 |
| 4-port, Black | A0645270 |
| 4-port, Ivory | AX102588 |

These products are in the process of being assessed for RoHS compliance. Please check our Web Site for the most current RoHS status.



Workstation Outlets

Interface Plate and Surface Adapter Boxes

AX101431 Interface Plate, 2-port, shown here with modules



AX101438 Interface Plate, 4-port, shown here with modules



AX101441 Interface Plate, 6-port, shown here with modules



AX101474 Interface/MDVO Surface Adapter Box



Interface Plate, Flush

Interface Plates combine flexibility and ease of use in work area installations. They are designed to accept the EZ-MDVO and GigaFlex UTP modules as well as all the MDVO Multimedia Modules. The Interface Plates are available in Single gang and can accept up to 6 modules. They also have labeling capabilities using built-in labeling windows. The faceplates can be attached to standard electrical boxes or wall-mounting hardware for flush-mount installations. The faceplates can also fit over the Interface Adapter Boxes for surface mount installations.

Interface/MDVO Surface Adapter Box

The **Interface/MDVO Surface Adapter Box** allows surface mounting of Interface Plates as well as MDVO Flush and Angled entry faceplates. The box can be mounted on any flat surface or can be attached to standard electrical boxes or wall-mounting hardware for additional storage space.

| Description | Belden Part Number |
|---|--------------------|
| Workstation Outlets | |
| Interface Plate | |
| Flush, 2-port, Gray | AX101431 |
| Flush, 2-port, Almond | AX101432 |
| Flush, 2-port, White | AX101433 |
| Flush, 2-port, Black | AX101434 |
| Flush, 2-port, Ivory | AX102582 |
| Flush, 4-port, Gray | AX101435 |
| Flush, 4-port, Almond | AX101436 |
| Flush, 4-port, White | AX101437 |
| Flush, 4-port, Black | AX101438 |
| Flush, 4-port, Ivory | AX102583 |
| Flush, 6-port, Gray | AX101439 |
| Flush, 6-port, Almond | AX101440 |
| Flush, 6-port, White | AX101441 |
| Flush, 6-port, Black | AX101442 |
| Flush, 6-port, Ivory | AX102584 |
| Interface/MDVO Surface Adapter Box | |
| Single Gang, Gray | AX101474 |
| Single Gang, Almond | AX101475 |
| Single Gang, White | AX101476 |
| Single Gang, Black | AX101477 |
| Single Gang, Ivory | AX102589 |

These products are in the process of being assessed for RoHS compliance. Please check our Web Site for the most current RoHS status.

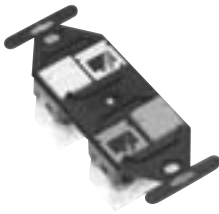
Workstation Outlets

MDVO Adapters

A0645271 MDVO Side Entry Box, shown here with modules



AX100311 MDVO 106 Adapter, 4-port, shown here with modules



A0409654 MDVO Deco Adapter, shown here with modules



AX100925 MDVO Modular Furniture Adapter, 4-port, shown here with modules



MDVO Adapters

All MDVO Adapters are compatible with GigaFlex, EZ-MDVO and MDVO Multimedia Modules.

The MDVO Side Entry Box can be easily mounted directly on the wall, as well as on modular furniture panels, baseboards and utility poles. The compact size of the box allows secure installation in confined areas such as behind a desk or underneath a workstation.

The MDVO 106 Adapters are designed for installations using standard NEMA electrical-style faceplates also referred to as 106-type or duplex wall plates.

The MDVO Deco Adapter is designed for installations using Decora style wall plates.

MDVO Modular Furniture Adapters are the ideal outlet adapters for open office furniture applications. They can be snapped into any standard opening, in modular furniture settings.

| Description | Belden Part Number |
|-------------|--------------------|
|-------------|--------------------|

Workstation Outlets

| MDVO Adapters | |
|--|----------|
| MDVO Side Entry Box, 2-port, Gray | A0645271 |
| MDVO Side Entry Box, 2-port, Almond | A0645272 |
| MDVO Side Entry Box, 2-port, White | A0645273 |
| MDVO Side Entry Box, 2-port, Black | A0645274 |
| MDVO Side Entry Box, 2-port, Ivory | AX102590 |
| MDVO 106 Adapter, 2-port, Gray | AX100304 |
| MDVO 106 Adapter, 2-port, Almond | AX100305 |
| MDVO 106 Adapter, 2-port, White | AX100306 |
| MDVO 106 Adapter, 2-port, Black | AX100307 |
| MDVO 106 Adapter, 2-port, Ivory | AX102591 |
| MDVO 106 Adapter, 4-port, Gray | AX100308 |
| MDVO 106 Adapter, 4-port, Almond | AX100309 |
| MDVO 106 Adapter, 4-port, White | AX100310 |
| MDVO 106 Adapter, 4-port, Black | AX100311 |
| MDVO 106 Adapter, 4-port, Ivory | AX102592 |
| MDVO Deco Adapter, 3-port, Gray | A0409651 |
| MDVO Deco Adapter, 3-port, Almond | A0409652 |
| MDVO Deco Adapter, 3-port, White | A0409653 |
| MDVO Deco Adapter, 3-port, Black | A0409654 |
| MDVO Deco Adapter, 3-port, Ivory | AX102593 |
| MDVO Modular Furniture Adapter, 3-port, Gray | A0407071 |
| MDVO Modular Furniture Adapter, 3-port, Almond | A0407072 |
| MDVO Modular Furniture Adapter, 3-port, White | A0407073 |
| MDVO Modular Furniture Adapter, 3-port, Black | A0407074 |
| MDVO Modular Furniture Adapter, 3-port, Ivory | AX102648 |
| MDVO Modular Furniture Adapter, 4-port, Gray | AX100925 |
| MDVO Modular Furniture Adapter, 4-port, Almond | AX100926 |
| MDVO Modular Furniture Adapter, 4-port, White | AX100927 |
| MDVO Modular Furniture Adapter, 4-port, Black | AX100928 |
| MDVO Modular Furniture Adapter, 4-port, Ivory | AX102594 |

These products are in the process of being assessed for RoHS compliance. Please check our Web Site for the most current RoHS status.

Workstation Outlets

Stainless Steel Faceplate

AX102007 2-port Stainless Steel SG Faceplate
Keystone-style, shown here with modules



AX102012 6-port Stainless Steel DG Faceplate
Keystone-style, shown here with modules



Stainless Steel Faceplate

Belden's **Stainless Steel Faceplates** are ideal for labs, sanitary, medical, and harsh environment type applications.

They are designed to accept Keystone-style modules. The Stainless Steel Faceplates are available as Single Gang and Double Gang, and can accept up to 12 modules. A studded version designed to support a wall phone is also offered. Stainless Steel Faceplates can be attached to standard NEMA type outlet boxes or wall-mounting hardware for flush-mount installation. Stainless Steel Faceplates are cULus Listed.

Please note : For use only with Keystone-style modules such as GigaFlex PS6+, GigaFlex PS5E and EZ-MDVO Modules.

| Description | Belden Part Number |
|-------------|--------------------|
|-------------|--------------------|

Workstation Outlets

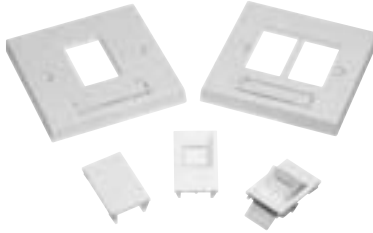
| Stainless Steel Faceplate | |
|--|-----------------|
| 1-Port Stainless Steel SG Faceplate - Keystone-style studded for Phone | AX102005 |
| 1-Port Stainless Steel SG Faceplate - Keystone-style | AX102006 |
| 2-Port Stainless Steel SG Faceplate - Keystone-style | AX102007 |
| 3-Port Stainless Steel SG Faceplate - Keystone-style | AX102008 |
| 4-Port Stainless Steel SG Faceplate - Keystone-style | AX102009 |
| 6-Port Stainless Steel SG Faceplate - Keystone-style | AX102010 |
| 4-Port Stainless Steel DG Faceplate - Keystone-style | AX102011 |
| 6-Port Stainless Steel DG Faceplate - Keystone-style | AX102012 |
| 12-Port Stainless Steel DG Faceplate - Keystone-style | AX102013 |

These products are in the process of being assessed for RoHS compliance. Please check our Web Site for the most current RoHS status.

Workstation Outlets

European Style Faceplates and Inserts

AX101372-73 European “6C” Style Faceplates and AX101377-75-76 European “6C” Inserts



European “6C” Style Faceplate

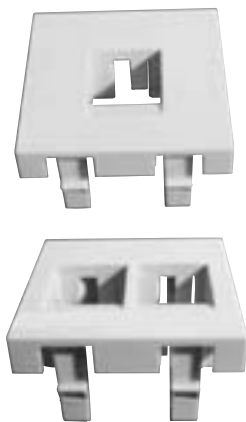
The European “6C” Style faceplates and Inserts are designed to accept the GigaFlex and EZ-MDVO UTP Modules.

They include a shutter to protect the module against dust and other contaminants.

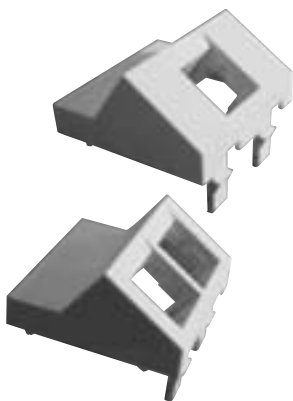
French Style Faceplate

The French Style Faceplates are designed to accept the EZ-MDVO and GigaFlex UTP modules as well as all the MDVO multimedia modules. The faceplates can be attached to standard 45 mm x 45 mm boxes or mounting hardware for flush-mount installations.

AX101413-14 French Style Faceplates



AX101415-16 French Style Faceplates



| Description | Belden Part Number |
|-------------|--------------------|
|-------------|--------------------|

Workstation Outlets

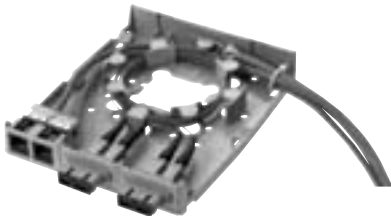
| European “6C” Style Faceplate | |
|--|----------|
| European “6C” Style Faceplate, Single Gang, Single Aperture, White | AX101372 |
| European “6C” Style Faceplate, Single Gang, Dual Aperture, White | AX101373 |
| European “6C” Style Faceplate, Double Gang, Quad Aperture, White | AX101374 |
| European “6C” Shuttered Module Holder, 1-port, Flush, White | AX101375 |
| European “6C” Shuttered Module Holder, 1-port, Angled, White | AX101376 |
| European “6C” Blank Insert, White | AX101377 |
| French Style Faceplate | |
| 1-port, Flush, White | AX101413 |
| 2-port, Flush, White | AX101414 |
| 1-port, Angled, White | AX101415 |
| 2-port, Angled, White | AX101416 |

These products are in the process of being assessed for RoHS compliance. Please check our Web Site for the most current RoHS status.

Workstation Outlets

MDVO Multimedia Outlet Boxes, Multi-User Outlet Boxes and Multi-User Adapter Strips

A0643205 MDVO Multimedia Outlet Box, shown here as terminated



AX100222 Multi-User Outlet Box, shown here with modules



AX100223 MDVO Adapter Strip, 12-port



MDVO Multimedia Outlet Box

The **MDVO Multimedia Outlet Box** brings unique versatility for multimedia work area installations. The box design provides cable management and helps maintain cable bend radius. The outlet box's low profile design and side-entry offers better protection for patch cords. The outlet box can accept up to six EZ-MDVO, GigaFlex or MDVO Multimedia Modules or three SC Duplex adapters.

The MDVO Multimedia Outlet Box can be mounted directly on the wall or attached to standard electrical boxes. Included with the MDVO Multimedia box are three SC Duplex Mounting bezels and three MDVO Adapters.

Multi-User Outlet Box

The **Multi-User Outlet Box** is a versatile box that can be used in many different applications. The outlet box can accommodate up to 24 connections of any type, UTP, fiber or coax. The outlet box is ideal for use as a multi-user telecommunications assembly, or simply as a high-density multimedia telecommunications outlet. The Multi-User Outlet Box can also be used as a wall mounted patch panel in confined areas, such as shallow rooms and cabinets.

Multi-User Adapter Strips

The Multi-User Outlet Box design allows for mixed media installations with a choice of connection strips. The box can accept either one or two 12-port **MDVO Adapter Strips, PS5E HD Connector Module Strips (BIX or 110)**, or a combination of both for a maximum of 24 connections.

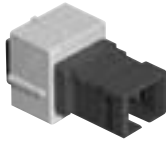
| Description | Belden Part Number |
|---|--------------------|
| Workstation Outlets | |
| MDVO Multimedia Outlet Box | |
| 6-port, Gray | A0643205 |
| 6-port, Almond | A0643206 |
| 6-port, White | A0643207 |
| 6-port, Black | A0643208 |
| 6-port, Ivory | AX102595 |
| Multi-User Outlet Box | |
| 24-port, Gray | AX100219 |
| 24-port, Almond | AX100220 |
| 24-port, White | AX100221 |
| 24-port, Black | AX100222 |
| Multi-User Adapter Strips | |
| MDVO Adapter Strip, 12-port, Empty, Black | AX100223 |
| PS5E HD-BIX Connector Module Strip, Universal Wiring 12-port, T568A/B | AX100224 |
| PS5E HD-110 Connector Module Strip, Universal Wiring 12-port, T568B/A | AX100494 |

These products are in the process of being assessed for RoHS compliance. Please check our Web Site for the most current RoHS status.

Workstation Outlets

MDVO Multimedia Modules

A0407005 MDVO SC Fiber Module



A0649254 SC Duplex Adapter



A0407010 MDVO ST Compatible Fiber Module



AX101467 MDVO MTRJ Fiber Module



A0406997 MDVO BNC Coaxial Module



A0406999 MDVO Video F Coaxial Module



MDVO Multimedia Module

MDVO Multimedia Modules address audio/video and fiber applications. Fiber modules are available for LC Duplex, SC Simplex, ST Compatible multimode and MT-RJ multimode & single-mode connections. The SC Duplex Adapter is a fiber adapter sleeve with flanges that mounts into the SC Duplex mounting bezel (included in the MDVO Multimedia Outlet box). Audio/video modules are available for SVHS, RCA, BNC and Video F connections.

| Description | Belden Part Number | | | | |
|-------------|--------------------|--------|-------|-------|-------|
| | Gray | Almond | White | Black | Ivory |

Workstation Outlets

| MDVO Multimedia Module | | | | | |
|------------------------------|----------|----------|----------|----------|----------|
| LC Duplex Multimode | AX102209 | AX102210 | AX102211 | AX102619 | |
| LC Duplex Single-mode | AX102213 | AX102214 | AX102215 | AX102216 | |
| SC Simplex, Multimode | A0407003 | A0407004 | A0407005 | A0407006 | AX102596 |
| SC Duplex Adapter, Multimode | A0649254 | | | | |
| ST Compatible, Multimode | A0407007 | A0407008 | A0407009 | A0407010 | AX102597 |
| MT-RJ, Multimode | AX101467 | | | | |
| MT-RJ, Single-mode, Blue | AX101466 | | | | |

| Description | Belden Part Number | | | | |
|------------------------------|--------------------|---------------|--------------|--------------|--------------|
| | Gray Holder | Almond Holder | White Holder | Black Holder | Ivory Holder |
| Coaxial, BNC | A0406995 | A0406996 | A0406997 | A0406998 | AX102598 |
| Coaxial, Video F | A0406999 | A0407000 | A0407001 | A0407002 | AX102599 |
| RCA, feedthru, White insert | AX101823 | AX101824 | AX101825 | AX101826 | AX102601 |
| RCA, feedthru, Yellow insert | AX101827 | AX101828 | AX101829 | AX101830 | AX102602 |
| RCA, feedthru, Red insert | AX101831 | AX101832 | AX101833 | AX101834 | AX102603 |
| RCA, feedthru, Black insert | AX101835 | AX101836 | AX101837 | AX101838 | AX102604 |
| SVHS, feedthrough | AX101839 | AX101840 | AX101841 | AX101842 | AX102605 |
| 3.5mm Stereo | AX102624 | AX102625 | AX102626 | AX102627 | AX102628 |

Custom multimedia connectors are also available, please contact Customer Service for more details.

These products are in the process of being assessed for RoHS compliance. Please check our Web Site for the most current RoHS status.

Workstation Outlets

PS5E BIX DVO Outlets and Double Gang Outlet

PS5E BIX DVO Outlets



AX100601 PS5E BIX DVO Module



AX100613 DVO Faceplate, 3-port



AX100640 DVO Faceplate, 4-port



PS5E BIX DVO Outlet

The **PS5E BIX DVO Workstation Outlets** are robust and installer-friendly products, combining punch-down connectors with standard modular jacks. The outlet's unique, completely enclosed housing protects the connectors and allows the wires to be front-terminated on BIX Insulation Displacement Connectors (IDC). The snap-on cover plate allows easy access and eliminates visible mounting screws.

PS5E BIX DVO Workstation Outlets offer headroom over the Category 5e cabling standard.

PS5E BIX DVO Double Gang Outlet

PS5E BIX DVO Double Gang Workstation Outlets offer high capacity outlet configuration options in the work area. They are created by combining **PS5E BIX DVO Connector Modules and DVO Double Gang Faceplates**.

Each faceplate can accept up to two connector modules. A color-coded icon labeling system can be used to tag each outlet port and simplify network management.

| Description | Belden Part Number | | |
|-------------|--------------------|--------|--------|
| | 1-Port | 2-Port | 4-Port |

Workstation Outlets

| PS5E BIX DVO Outlets | | | |
|-----------------------------|----------|----------|----------|
| Surface, T568A-ISDN, Gray | AX100382 | AX100390 | AX100398 |
| Surface, T568A-ISDN, Almond | AX100383 | AX100391 | AX100399 |
| Surface, T568A-ISDN, White | AX100384 | AX100392 | AX100400 |
| Surface, T568A-ISDN, Black | AX100385 | AX100393 | AX100401 |
| Surface, T568B-ALT, Gray | AX100386 | AX100394 | AX100402 |
| Surface, T568B-ALT, Almond | AX100387 | AX100395 | AX100403 |
| Surface, T568B-ALT, White | AX100388 | AX100396 | AX100404 |
| Surface, T568B-ALT, Black | AX100389 | AX100397 | AX100405 |
| Flush, T568A-ISDN, Gray | AX100334 | AX100342 | AX100350 |
| Flush, T568A-ISDN, Almond | AX100335 | AX100343 | AX100351 |
| Flush, T568A-ISDN, White | AX100336 | AX100344 | AX100352 |
| Flush, T568A-ISDN, Black | AX100337 | AX100345 | AX100353 |
| Flush, T568B-ALT, Gray | AX100338 | AX100346 | AX100354 |
| Flush, T568B-ALT, Almond | AX100339 | AX100347 | AX100355 |
| Flush, T568B-ALT, White | AX100340 | AX100348 | AX100356 |
| Flush, T568B-ALT, Black | AX100341 | AX100349 | AX100357 |

| Description | Belden Part Number | | | |
|-------------|--------------------|-----------|--------|--------|
| | T568A-ISDN | T568B-ALT | 3-Port | 4-Port |

| PS5E BIX DVO Double Gang Outlet | | | | |
|--|----------|----------|----------|----------|
| PS5E BIX DVO Connector Module, Flush, 1-port, Gray | AX100601 | AX100604 | | |
| PS5E BIX DVO Connector Module, Flush, 2-port, Gray | AX100602 | AX100605 | | |
| DVO Double Gang Faceplate, Flush, Gray | | | AX100613 | AX100640 |
| DVO Double Gang Faceplate, Flush, Almond | | | AX100614 | AX100641 |
| DVO Double Gang Faceplate, Flush, White | | | AX100615 | AX100642 |
| DVO Double Gang Faceplate, Flush, Black | | | AX100616 | AX100643 |

These products are in the process of being assessed for RoHS compliance. Please check our Web Site for the most current RoHS status.



Workstation Outlets

Outlet Accessories

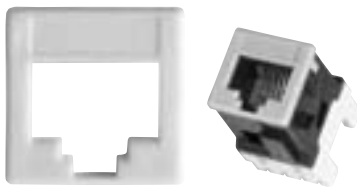
A0405538 MDVO Blank Insert



MDVO Blank Insert

MDVO Blank Inserts can be used in any MediaFlex outlets, Interface plates, MDVO faceplates, adapters or boxes to fill in unused ports.

AX102022 Colored Bezel



Colored Bezel

The **Colored Bezels** are plastic inserts that fit over the face of GigaFlex and EZ-MDVO Modules to modify their color. They are particularly useful in installations where the churn rate is high and color identification of outlets is critical (ex.: segmented network with security levels). They also contribute to simplifying the management of the cabling infrastructure by using only one color of module for Moves, Adds and Changes (MACs).

AX100196 ID Tab



ID Tab

ID Tabs are color-coded identification caps that can be inserted over the GigaFlex and EZ-MDVO Modules. The ID tabs are available as blank, data or voice coded. They are available in eleven colors to facilitate identification and to match modern office decor.

The flexible identification cap also acts as a protective cover eliminating exposure to dust and other contaminants when the module is not in use.

| Description | Belden Part Number |
|-------------|--------------------|
|-------------|--------------------|

Workstation Outlets

| MDVO Blank Insert | |
|-------------------|----------|
| Gray | A0405536 |
| Almond | A0405537 |
| White | A0405538 |
| Black | A0405539 |
| Electric White | AX102607 |
| Ivory | AX102600 |
| Colored Bezel | |
| Gray | AX102014 |
| Almond | AX102015 |
| White | AX102016 |
| Black | AX102017 |
| Orange | AX102018 |
| Red | AX102019 |
| Yellow | AX102020 |
| Green | AX102021 |
| Blue | AX102022 |
| Purple | AX102023 |
| Brown | AX102024 |
| Ivory | AX102606 |

| Description | Belden Part Number | | |
|-------------|--------------------|------|-------|
| | Blank | Data | Voice |

| ID Tab | | | |
|--------|----------|----------|----------|
| Gray | AX100182 | AX100193 | AX100204 |
| Almond | AX100183 | AX100194 | AX100205 |
| White | AX100184 | AX100195 | AX100206 |
| Black | AX100185 | AX100196 | AX100207 |
| Orange | AX100186 | AX100197 | AX100208 |
| Red | AX100187 | AX100198 | AX100209 |
| Yellow | AX100188 | AX100199 | AX100210 |
| Green | AX100189 | AX100200 | AX100211 |
| Blue | AX100190 | AX100201 | AX100212 |
| Purple | AX100191 | AX100202 | AX100213 |
| Brown | AX100192 | AX100203 | AX100214 |

These products are in the process of being assessed for RoHS compliance. Please check our Web Site for the most current RoHS status.



Workstation Outlets

Tools

AX100749 GigaFlex Connecting Tool



GigaFlex Connecting Tool

The **GigaFlex Connecting Tool** is a no-impact connecting tool used to terminate cables, pigtails or cross-connect wires on any GigaFlex Module or 110 product. The GigaFlex Tool is a spring-activated hand tool. A single forward movement will seat the wire into the IDC clip and cut off the excess wire. The tool will terminate 22, 24 and 26-AWG plastic insulated solid copper conductors.

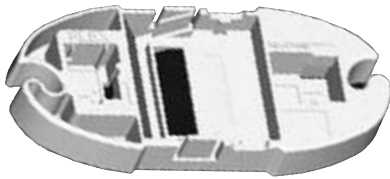
1797B Cable Preparation Tool



Bonded-Pair Cable Preparation Tool

The **Bonded-Pair Cable Preparation Tool** makes it faster and easier to prepare cables for connector termination. This tool is ideal for use with Belden's DataTwist® 350, MediaTwist®, and DataTwist® 600e Bonded-Pair cables, providing special features that help separate twisted pairs. It can also be used to prepare any nonbonded-pair cable for installation.

AX101852 Termination Station



Termination Station

The **Termination Station** is an ergonomically designed holder that provides stability to the GigaFlex Module during the termination process. The station has pockets with locking features that steadily holds either MDVO-style or Keystone-style GigaFlex Modules or MediaFlex Inserts during pair placement and wire termination. Cable retainers on each end of the station will secure and hold cables during the pair placements process. The flat bottom surface will provide the required stability to safely terminate the modules. The tool is made of very durable plastic and its low profile makes it an easy tool to use and carry.

Outlet Release Tool

The **Outlet Release Tool** is a very convenient tool for servicing the MediaFlex and Interface outlets. Its bent tip allows for easy front removal of MediaFlex inserts, especially when used in Angled Entry plates. It is also very useful to extract GigaFlex Modules from miscellaneous mounting hardware and to remove the protective cap for GigaFlex Module re-termination.

AX101185 Outlet Release Tool



| Description | Belden Part Number |
|-------------|--------------------|
|-------------|--------------------|

Workstation Outlets

| Tools | |
|------------------------------------|----------|
| GigaFlex Connecting Tool | AX100749 |
| Bonded-Pair Cable Preparation Tool | 1797B |
| Termination Station | AX101852 |
| Outlet Release Tool | AX101185 |

These products are in the process of being assessed for RoHS compliance. Please check our Web Site for the most current RoHS status.