



## General data

Signal lamps with lamp socket. The standard illumination is by a filament lamp; illumination with LED is available on request. The mm specification in the product name indicates the appropriate mounting hole diameter of the signal lamps.

For further signal lamps, refer to the "8 mm" and "LUMOTAST" pushbutton ranges as well as the signal indicators of the "RAFIX" control component ranges.

## Content

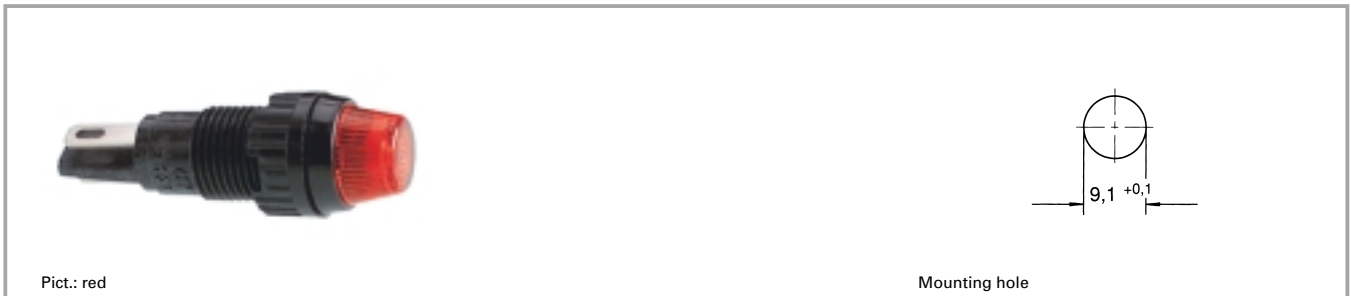
|  |               |
|--|---------------|
| <b>Signal lamps with lamp socket W 2 x 4.6d, 9.1 mm</b>            | <b>3 - 36</b> |
| Signal lamps with lamp socket W 2 x 4.6d, 9.1 mm, round lens       | 3 - 37        |
| <b>Signal lamps with lamp socket T 4.6, 9.1 mm</b>                 | <b>3 - 38</b> |
| Signal lamps with lamp socket T 4.6, 9.1 mm, round lens            | 3 - 39        |
| Signal lamps with lamp socket T 4.6, 9.1 mm, round lens            | 3 - 39        |
| <b>Signal lamps with lamp socket T 5.5, 11.1 mm</b>                | <b>3 - 40</b> |
| Signal lamps with lamp socket T 5.5, 11.1 mm, round lens           | 3 - 41        |
| <b>Signal lamps with lamp socket BA 9s (MBC/MCC), 16.2 mm</b>      | <b>3 - 42</b> |
| Signal lamps with lamp socket BA 9s (MBC/MCC), 16.2 mm, round lens | 3 - 43        |
| Signal lamps with lamp socket BA 9s (MBC/MCC), 16.2 mm, round lens | 3 - 43        |
| <b>Signal lamps with lamp socket E 10 (MES), 16.2 mm</b>           | <b>3 - 44</b> |
| Signal lamps with lamp socket E 10 (MES), 16.2 mm, round lens      | 3 - 45        |
| Signal lamps with lamp socket E 10 (MES), 16.2 mm, round lens      | 3 - 45        |
| Signal lamps with lamp socket E 10 (MES), 16.2 mm, round lens      | 3 - 46        |
| <b>Signal lamps with lamp socket BA 9s (MBC/MCC), 18.2 mm</b>      | <b>3 - 48</b> |
| Signal lamps with lamp socket BA 9s (MBC/MCC), 18.2 mm, round lens | 3 - 49        |
| <b>Signal lamps with lamp socket E 14, 22.3 mm</b>                 | <b>3 - 50</b> |
| Signal lamps with lamp socket E 14, IP40, 22.3 mm                  | 3 - 51        |
| Signal lamps with lamp socket E 14, 22.3 mm, screw-on lens, IP40   | 3 - 51        |
| <b>Signal lamps with lamp socket E 14, 30.5 mm</b>                 | <b>3 - 52</b> |
| Signal lamps with lamp socket E 14, IP40, 30.5 mm                  | 3 - 53        |
| Signal lamps with lamp socket E 14, IP40, 30.5 mm                  | 3 - 53        |
| Signal lamps with lamp socket E 14, IP40, 30.5 mm                  | 3 - 54        |
| <b>Signal lamps with lamp socket BA 15d, 30.5 mm</b>               | <b>3 - 56</b> |
| Signal lamps with lamp socket BA 15d, IP40, 30.5 mm                | 3 - 57        |
| Signal lamps with lamp socket BA 15d, IP40, 30.5 mm                | 3 - 58        |
| Signal lamps with lamp socket BA 15d, IP40, 30.5 mm                | 3 - 58        |

Signal lamps

**Stock items** are marked by **bold printed** order numbers.

3 - 35

### Signal lamps with lamp socket W 2 x 4.6d, 9.1 mm



### Technical data

#### General information

|                    |                 |
|--------------------|-----------------|
| Form of lens       | round           |
| Colour of lens     | see order block |
| Diameter of collar | 11 mm           |

#### Dimensions

|                |         |
|----------------|---------|
| Overall height | 7 mm    |
| Mounting depth | 25.5 mm |
| Mounting hole  | 9.1 mm  |

#### Mechanical design

|             |   |
|-------------|---|
| Mounting    | ring nut                                  |
| Terminals   | quick connector<br>A 2.8 x 0.5 tin-plated |
| Lamp socket | W 2 x 4.6d                                |
| Lamp        | filament lamp                             |

#### Electrical characteristics

|                    |       |
|--------------------|-------|
| Voltage limit max. | 42 V  |
| Power limit max.   | 1.2 W |

#### Other specifications

|                                      |      |
|--------------------------------------|------|
| Degree of protection from front side | IP40 |
| Weight                               | 1 g  |

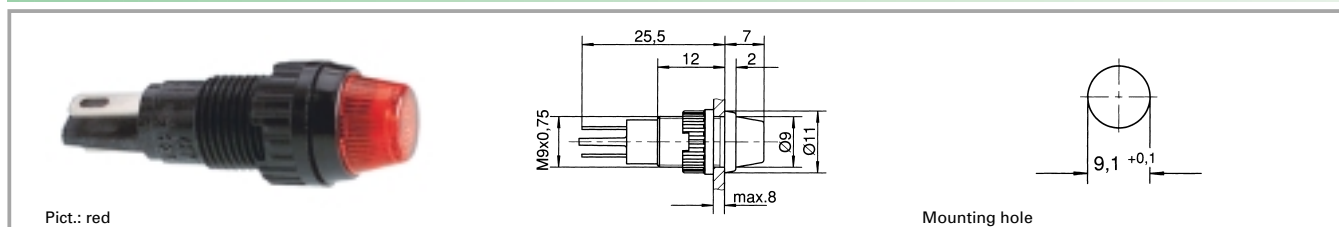
3

### Accessories Signal lamps with lamp socket W 2 x 4.6d, 9.1 mm

| With Socket | Description                                    | Photo | Order no.                | Page   |
|-------------|--|-------|--------------------------|--------|
|             | Filament lamp, W 2 x 4.6d base, 24 - 30 V      |       | <b>1.90.120.005/0000</b> | 5 - 4  |
|             | Filament lamp, W 2 x 4.6d base, 60 V           |       | <b>1.90.120.009/0000</b> | 5 - 4  |
|             | Filament lamp, W 2 x 4.6d base, 48 V           |       | <b>1.90.120.010/0000</b> | 5 - 4  |
|             | Filament lamp, W 2 x 4.6d base, 24 V           |       | <b>1.90.120.011/0000</b> | 5 - 4  |
|             | Filament lamp, W 2 x 4.6d base, 12 V           |       | <b>1.90.120.012/0000</b> | 5 - 4  |
|             | Filament lamp, W 2 x 4.6d base, 6 V            |       | <b>1.90.120.013/0000</b> | 5 - 4  |
|             | Protective sleeve made of Buna N (NBR), 7 x 30 |       | 5.52.011.022/0100        |        |
|             | Fixing spanner M 9, M 10                       |       | <b>5.58.002.025/0105</b> | 5 - 25 |

## Signal lamps with lamp socket

### Signal lamps with lamp socket W 2 x 4.6d, 9.1 mm, round lens



| Voltage limit max. | Power limit max. | Lamp          | Colour of lens         | Order no. complete | Order no. single parts   |                          |
|--------------------|------------------|---------------|------------------------|--------------------|--------------------------|--------------------------|
|                    |                  |               |                        |                    | Housing                  | Lens                     |
| 42 V               | 1.2 W            | filament lamp | transparent colourless | 1.66.001.011/1002  | <b>1.66.001.026/0000</b> | <b>5.49.255.002/1002</b> |
| 42 V               | 1.2 W            | filament lamp | transparent red        | 1.66.001.011/1301  | <b>1.66.001.026/0000</b> | <b>5.49.255.002/1301</b> |
| 42 V               | 1.2 W            | filament lamp | transparent yellow     | 1.66.001.011/1402  | <b>1.66.001.026/0000</b> | <b>5.49.255.002/1402</b> |
| 42 V               | 1.2 W            | filament lamp | transparent green      | 1.66.001.011/1502  | <b>1.66.001.026/0000</b> | <b>5.49.255.002/1502</b> |
| 42 V               | 1.2 W            | filament lamp | transparent blue       | 1.66.001.011/1601  | <b>1.66.001.026/0000</b> | <b>5.49.255.002/1601</b> |

Technical data see page 3 - 36

Please order luminous elements separately.

3

With Socket

### Signal lamps with lamp socket T 4.6, 9.1 mm



### Technical data

#### General information

Form of lens see order block  
 Colour of lens see order block  
 Diameter of collar 11 mm

#### Dimensions

Overall height see order block  
 Mounting depth 30.5 mm  
 Mounting hole 9.1 mm

#### Mechanical design

Mounting ring nut  
 Terminals solder terminals  
 Lamp socket T 4.6  
 Lamp filament lamp

#### Electrical characteristics

Voltage limit max. 42 V  
 Power limit max. 1 W

#### Other specifications

Degree of protection from front side IP40  
 Weight 1 g

3

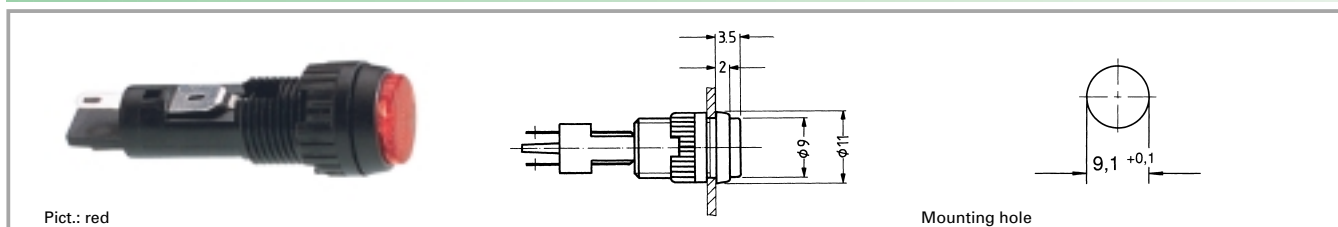
### Accessories Signal lamps with lamp socket T 4.6, 9.1 mm

| Description                     | Photo | Order no.                | Page   |
|---------------------------------|-------|--------------------------|--------|
| Filament lamp, T 4.6 base, 12 V |       | <b>1.90.100.012/0000</b> | 5 - 6  |
| Filament lamp, T 4.6 base, 24 V |       | <b>1.90.100.013/0000</b> | 5 - 6  |
| Fixing spanner M 9, M 10        |       | <b>5.58.002.025/0105</b> | 5 - 25 |

With Socket

## Signal lamps with lamp socket

### Signal lamps with lamp socket T 4.6, 9.1 mm, round lens

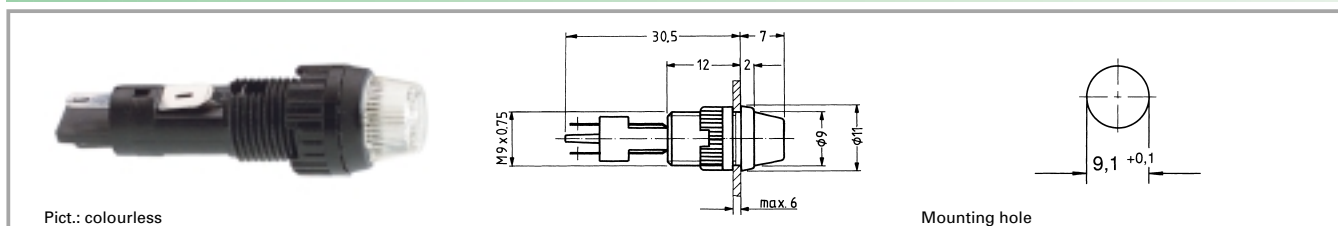


| Voltage limit max. | Lamp socket | Lamp          | Colour of lens         | Order no. complete | Order no. single parts |                   |
|--------------------|-------------|---------------|------------------------|--------------------|------------------------|-------------------|
|                    |             |               |                        |                    | Housing                | Lens              |
| 42 V               | T 4.6       | filament lamp | transparent colourless | 1.02.157.001/1002  | 1.02.157.021/0000      | 5.49.255.001/1002 |
| 42 V               | T 4.6       | filament lamp | transparent red        | 1.02.157.001/1307  | 1.02.157.021/0000      | 5.49.255.001/1307 |
| 42 V               | T 4.6       | filament lamp | transparent yellow     | 1.02.157.001/1403  | 1.02.157.021/0000      | 5.49.255.001/1403 |
| 42 V               | T 4.6       | filament lamp | transparent green      | 1.02.157.001/1510  | 1.02.157.021/0000      | 5.49.255.001/1510 |

Technical data see page 3 - 38

Please order luminous elements separately.

### Signal lamps with lamp socket T 4.6, 9.1 mm, round lens



| Voltage limit max. | Lamp socket | Lamp          | Colour of lens         | Order no. complete | Order no. single parts |                   |
|--------------------|-------------|---------------|------------------------|--------------------|------------------------|-------------------|
|                    |             |               |                        |                    | Housing                | Lens              |
| 42 V               | T 4.6       | filament lamp | transparent colourless | 1.02.157.011/1002  | 1.02.157.021/0000      | 5.49.255.002/1002 |
| 42 V               | T 4.6       | filament lamp | transparent red        | 1.02.157.011/1301  | 1.02.157.021/0000      | 5.49.255.002/1301 |
| 42 V               | T 4.6       | filament lamp | transparent yellow     | 1.02.157.011/1402  | 1.02.157.021/0000      | 5.49.255.002/1402 |
| 42 V               | T 4.6       | filament lamp | transparent green      | 1.02.157.011/1502  | 1.02.157.021/0000      | 5.49.255.002/1502 |

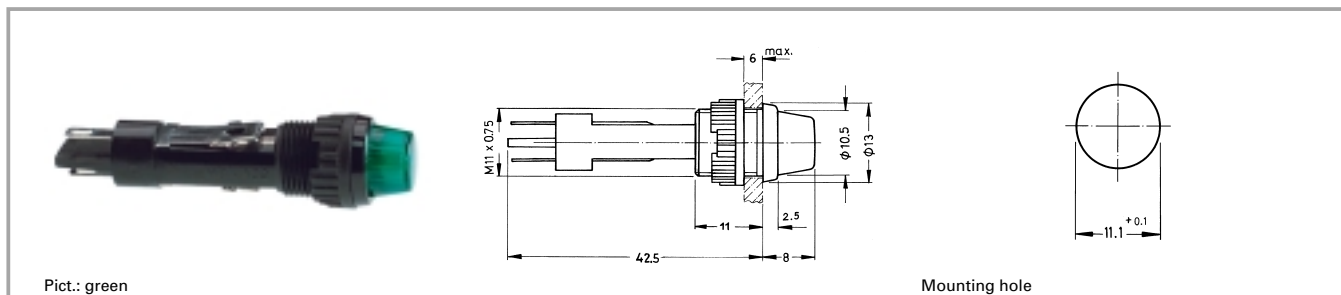
Technical data see page 3 - 38

Please order luminous elements separately.

3

With Socket

### Signal lamps with lamp socket T 5.5, 11.1 mm



### Technical data

#### General information

Form of lens round protruding  
 Colour of lens see order block  
 Diameter of collar 13 mm

#### Dimensions

Overall height 8 mm  
 Mounting depth 42.5 mm  
 Mounting hole 11.1 mm

#### Mechanical design

Mounting ring nut  
 Terminals solder terminals  
 Lamp socket T 5.5 DIN 49 604  
 Lamp filament lamp

#### Electrical characteristics

Voltage limit max. 42 V  
 Power limit max. 1.2 W

#### Other specifications

Degree of protection from front side IP40  
 Weight 2.5 g

3

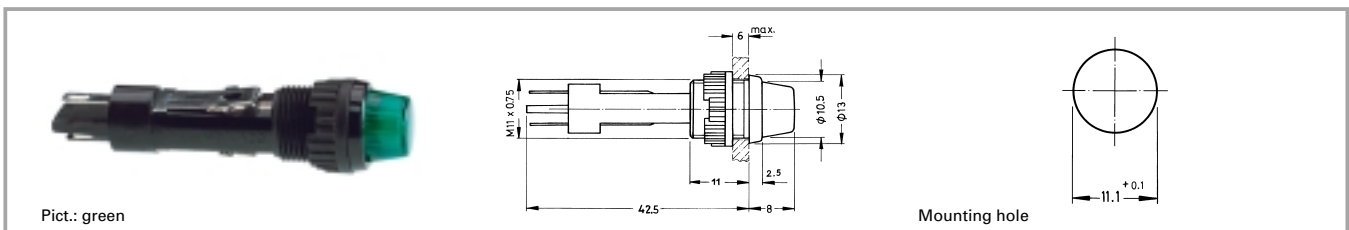
### Accessories Signal lamps with lamp socket T 5.5, 11.1 mm

| Description                                    | Photo | Order no.                | Page   |
|--|-------|--------------------------|--------|
| Filament lamp, T 5.5 base, 24 V                |       | <b>1.90.101.054/0000</b> | 5 - 7  |
| Protective sleeve made of Buna N (NBR), 8 x 30 |       | 5.52.011.023/0100        |        |
| Fixing spanner M 11, M 13                      |       | <b>5.58.002.026/0105</b> | 5 - 25 |

With Socket

## Signal lamps with lamp socket

### Signal lamps with lamp socket T 5.5, 11.1 mm, round lens



| Voltage limit max. | Power limit max. | Lamp          | Colour of lens         | Order no. complete | Order no. single parts   |                          |
|--------------------|------------------|---------------|------------------------|--------------------|--------------------------|--------------------------|
|                    |                  |               |                        |                    | Housing                  | Lens                     |
| 42 V               | 1.2 W            | filament lamp | transparent colourless | 1.65.104.041/1002  | <b>1.65.104.001/0000</b> | <b>5.49.255.003/1002</b> |
| 42 V               | 1.2 W            | filament lamp | transparent red        | 1.65.104.041/1301  | <b>1.65.104.001/0000</b> | <b>5.49.255.003/1301</b> |
| 42 V               | 1.2 W            | filament lamp | transparent yellow     | 1.65.104.041/1402  | <b>1.65.104.001/0000</b> | <b>5.49.255.003/1402</b> |
| 42 V               | 1.2 W            | filament lamp | transparent green      | 1.65.104.041/1502  | <b>1.65.104.001/0000</b> | <b>5.49.255.003/1502</b> |

Technical data see page 3 - 40

Please order luminous elements separately.

3

With  
Socket

### Signal lamps with lamp socket BA 9s (MBC/MCC), 16.2 mm



Pict.: colourless

yellow

Panel cut-out

### Technical data

#### General information

|                    |                 |
|--------------------|-----------------|
| Form of lens       | see order block |
| Colour of lens     | see order block |
| Diameter of collar | see order block |

#### Dimensions

|                |                 |
|----------------|-----------------|
| Overall height | see order block |
| Mounting depth | 45.8 mm         |
| Mounting hole  | 16.2 mm         |

#### Mechanical design

|             |  |
|-------------|--|
| Mounting    | ring nut   |
| Terminals   | quick-connect terminals<br>for 2x 2.8x0.8 mm<br>tin-plated |
| Lamp socket | BA 9 s   |
| Lamp        | filament lamp  |

#### Electrical characteristics

|                    |       |
|--------------------|-------|
| Voltage limit max. | 250 V |
| Power limit max.   | 2 W   |

#### Other specifications

|   |                 |
|---|-----------------|
| Degree of protection<br>from front side | see order block |
| Weight                                  | 10 g            |
| Approvals                               | SEV at 2 W      |

3

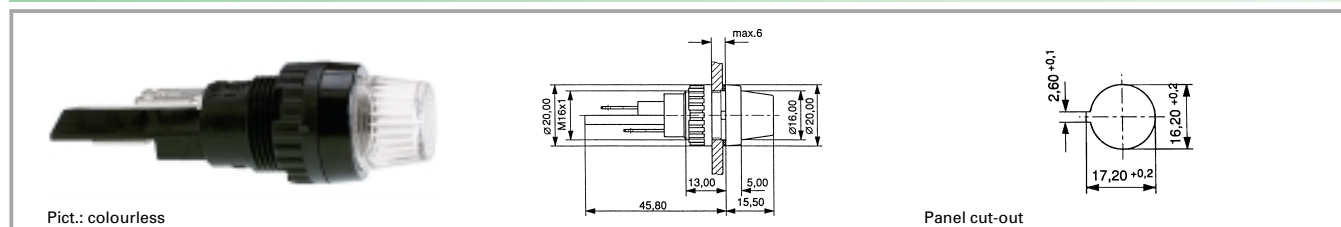
### Accessories Signal lamps with lamp socket BA 9s (MBC/MCC), 16.2 mm

| With Socket | Description  | Photo | Order no.         | Page   |
|-------------|--|-------|-------------------|--------|
|             | Protective sleeve for terminals made of Buna N (NBR) |       | 5.52.011.027/0100 |        |
|             | Fixing spanner M 15, M 16                            |       | 5.58.002.019/0105 | 5 - 25 |



## Signal lamps with lamp socket

### Signal lamps with lamp socket BA 9s (MBC/MCC), 16.2 mm, round lens



| Voltage limit max. | Power limit max. | Degree of protection from front side | Colour of lens         | Order no. complete | Order no. single parts   |                          |
|--------------------|------------------|--------------------------------------|------------------------|--------------------|--------------------------|--------------------------|
|                    |                  |                                      |                        |                    | Housing                  | Lens                     |
| 250 V              | 2 W              | IP40                                 | transparent colourless | 1.63.004.001/1002  | <b>1.63.004.091/0000</b> | <b>5.49.205.013/1002</b> |
| 250 V              | 2 W              | IP40                                 | transparent red        | 1.63.004.001/1301  | <b>1.63.004.091/0000</b> | <b>5.49.205.013/1301</b> |
| 250 V              | 2 W              | IP40                                 | transparent yellow     | 1.63.004.001/1402  | <b>1.63.004.091/0000</b> | <b>5.49.205.013/1402</b> |
| 250 V              | 2 W              | IP40                                 | transparent green      | 1.63.004.001/1502  | <b>1.63.004.091/0000</b> | <b>5.49.205.013/1502</b> |

Technical data see page 3 - 42

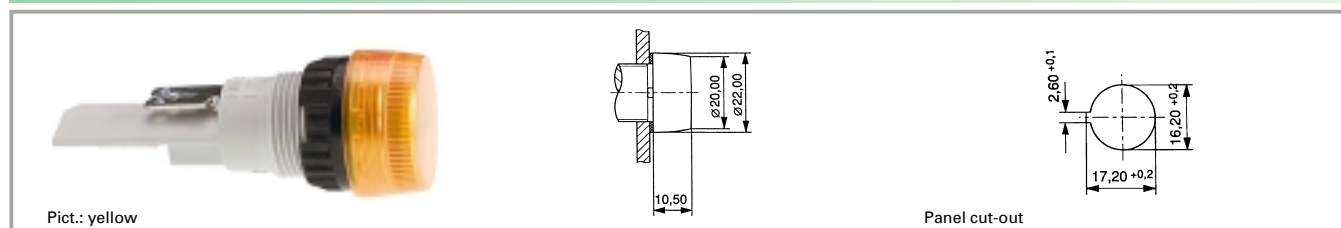
#### Accessories:

Filament lamp, BA 9s base (MBC/MCC), 12 - 15 V: **1.90.060.132/0000**

Filament lamp, BA 9s base (MBC/MCC), 24 - 30 V: **1.90.060.133/0000**

Filament lamp, BA 9s base (MBC/MCC), 110 - 130 V: **1.90.060.137/0000**

### Signal lamps with lamp socket BA 9s (MBC/MCC), 16.2 mm, round lens



| Voltage limit max. | Power limit max. | Degree of protection from front side | Colour of lens         | Order no. complete | Order no. single parts   |                          |
|--------------------|------------------|--------------------------------------|------------------------|--------------------|--------------------------|--------------------------|
|                    |                  |                                      |                        |                    | Housing                  | Lens                     |
| 250 V              | 2 W              | IP65                                 | transparent colourless | 1.63.004.010/1002  | <b>1.63.004.100/0000</b> | <b>5.49.227.007/1002</b> |
| 250 V              | 2 W              | IP65                                 | transparent red        | 1.63.004.010/1301  | <b>1.63.004.100/0000</b> | <b>5.49.227.007/1301</b> |
| 250 V              | 2 W              | IP65                                 | transparent yellow     | 1.63.004.010/1402  | <b>1.63.004.100/0000</b> | <b>5.49.227.007/1402</b> |
| 250 V              | 2 W              | IP65                                 | transparent green      | 1.63.004.010/1502  | <b>1.63.004.100/0000</b> | <b>5.49.227.007/1502</b> |

Technical data see page 3 - 42

#### Accessories:

Filament lamp, BA 9s base (MBC/MCC), 12 - 15 V: **1.90.060.003/0000**

Filament lamp, BA 9s base (MBC/MCC), 24 - 30 V: **1.90.060.014/0000**

### Signal lamps with lamp socket E 10 (MES), 16.2 mm



### Technical data

#### General information

Form of lens round  
 Colour of lens see order block  
 Diameter of collar 20 mm

#### Dimensions

Overall height see order block  
 Mounting depth see order block  
 Mounting hole 16.2 mm

#### Mechanical design

Mounting ring nut  
 Terminals see order block  
 Lamp socket E 10  
 Lamp filament lamp

#### Electrical characteristics

Voltage limit max. 250 V  
 Power limit max. 2 W

#### Other specifications

Degree of protection from front side IP40  
 Weight 11 g  
 Approvals at 2W (T=°C) VDE

3

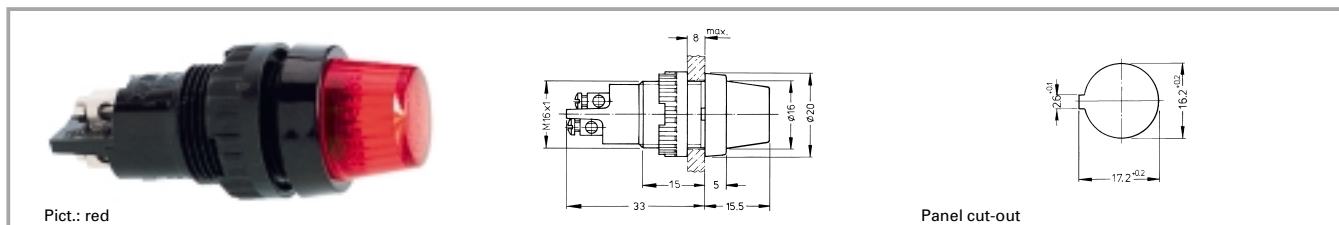
### Accessories Signal lamps with lamp socket E 10 (MES), 16.2 mm

| Description                                 | Photo | Order no.                | Page   |
|---|-------|--------------------------|--------|
| Filament lamp, E 10 (MES) base, 24 - 30 V   |       | <b>1.90.010.033/0000</b> | 5 - 11 |
| Filament lamp, E 10 (MES) base, 110 - 130 V |       | <b>1.90.010.037/0000</b> | 5 - 11 |
| Protective sleeve for terminals             |       | 5.52.011.026/0100        |        |
| Fixing spanner M 15, M 16                   |       | <b>5.58.002.019/0105</b> | 5 - 25 |

With Socket

## Signal lamps with lamp socket

### Signal lamps with lamp socket E 10 (MES), 16.2 mm, round lens



| Voltage limit max. | Power limit max. | Terminals                     | Colour of lens         | Order no. complete       | Order no. single parts |                          |
|--------------------|------------------|-------------------------------|------------------------|--------------------------|------------------------|--------------------------|
|                    |                  |                               |                        |                          | Housing                | Lens                     |
| 250 V              | 2 W              | screw terminals nickel-plated | transparent colourless | <b>1.60.502.102/1002</b> | 1.60.502.091/0000      | <b>5.49.205.013/1002</b> |
| 250 V              | 2 W              | screw terminals nickel-plated | transparent red        | <b>1.60.502.102/1301</b> | 1.60.502.091/0000      | <b>5.49.205.013/1301</b> |
| 250 V              | 2 W              | screw terminals nickel-plated | transparent yellow     | <b>1.60.502.102/1402</b> | 1.60.502.091/0000      | <b>5.49.205.013/1402</b> |
| 250 V              | 2 W              | screw terminals nickel-plated | transparent green      | <b>1.60.502.102/1502</b> | 1.60.502.091/0000      | <b>5.49.205.013/1502</b> |
| 250 V              | 2 W              | screw terminals nickel-plated | transparent blue       | <b>1.60.502.102/1601</b> | 1.60.502.091/0000      | <b>5.49.205.013/1601</b> |

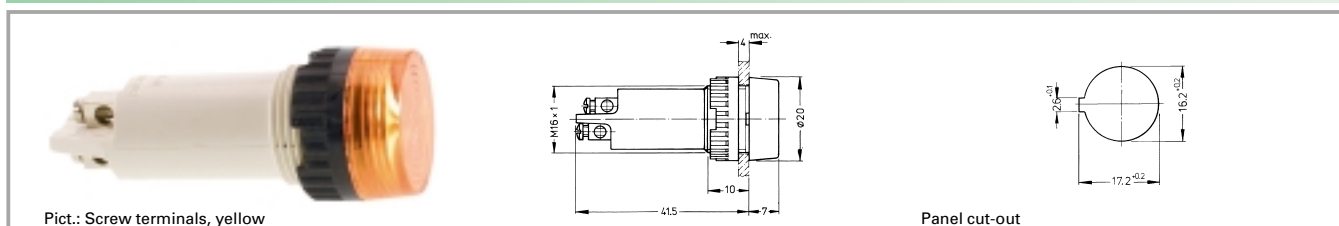
Technical data see page 3 - 44

Approval: VDE, SEV T70°C.

Versions with 2.8 x 0.8 quick-connect terminals available on request.

3

### Signal lamps with lamp socket E 10 (MES), 16.2 mm, round lens



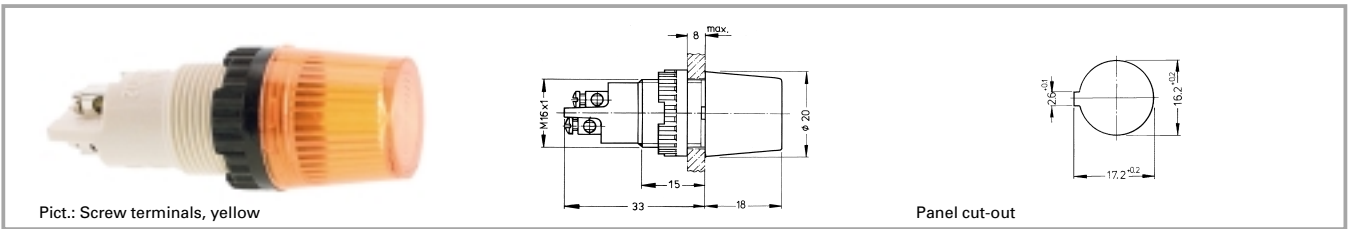
| Voltage limit max. | Power limit max. | Terminals                     | Colour of lens         | Order no. complete | Order no. single parts   |                          |
|--------------------|------------------|-------------------------------|------------------------|--------------------|--------------------------|--------------------------|
|                    |                  |                               |                        |                    | Housing                  | Lens                     |
| 250 V              | 2 W              | screw terminals nickel-plated | transparent colourless | 1.60.502.002/1002  | <b>1.60.502.098/0000</b> | <b>5.49.227.005/1002</b> |
| 250 V              | 2 W              | screw terminals nickel-plated | transparent red        | 1.60.502.002/1301  | <b>1.60.502.098/0000</b> | <b>5.49.227.005/1301</b> |
| 250 V              | 2 W              | screw terminals nickel-plated | transparent yellow     | 1.60.502.002/1402  | <b>1.60.502.098/0000</b> | <b>5.49.227.005/1402</b> |
| 250 V              | 2 W              | screw terminals nickel-plated | transparent green      | 1.60.502.002/1502  | <b>1.60.502.098/0000</b> | <b>5.49.227.005/1502</b> |
| 250 V              | 2 W              | screw terminals nickel-plated | transparent blue       | 1.60.502.002/1601  | <b>1.60.502.098/0000</b> | <b>5.49.227.005/1601</b> |

Technical data see page 3 - 44

Approval: VDE, SEV T70°C.

With Socket

### Signal lamps with lamp socket E 10 (MES), 16.2 mm, round lens



| Voltage limit max. | Power limit max. | Terminals                     | Colour of lens         | Order no. complete | Order no. single parts   |                          |
|--------------------|------------------|-------------------------------|------------------------|--------------------|--------------------------|--------------------------|
|                    |                  |                               |                        |                    | Housing                  | Lens                     |
| 250 V              | 2 W              | screw terminals nickel-plated | transparent colourless | 1.60.502.001/1002  | <b>1.60.502.099/0000</b> | <b>5.49.227.004/1002</b> |
| 250 V              | 2 W              | screw terminals nickel-plated | transparent red        | 1.60.502.001/1301  | <b>1.60.502.099/0000</b> | <b>5.49.227.004/1301</b> |
| 250 V              | 2 W              | screw terminals nickel-plated | transparent yellow     | 1.60.502.001/1402  | <b>1.60.502.099/0000</b> | <b>5.49.227.004/1402</b> |
| 250 V              | 2 W              | screw terminals nickel-plated | transparent green      | 1.60.502.001/1502  | <b>1.60.502.099/0000</b> | <b>5.49.227.004/1502</b> |
| 250 V              | 2 W              | screw terminals nickel-plated | transparent blue       | 1.60.502.001/1601  | <b>1.60.502.099/0000</b> | <b>5.49.227.004/1601</b> |

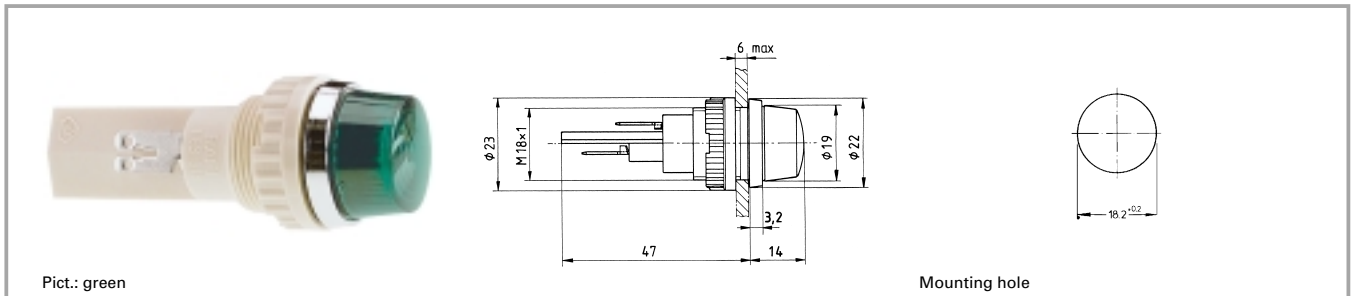
Technical data see page 3 - 44

Approval: VDE, SEV T70°C.

3

With Socket

### Signal lamps with lamp socket BA 9s (MBC/MCC), 18.2 mm



### Technical data

#### General information

|                    |                 |
|--------------------|-----------------|
| Form of lens       | round           |
| Colour of lens     | see order block |
| Diameter of collar | 22 mm           |

#### Dimensions

|                |         |
|----------------|---------|
| Overall height | 14 mm   |
| Mounting depth | 47 mm   |
| Mounting hole  | 18.2 mm |

#### Mechanical design

|             |  |
|-------------|--|
| Mounting    | ring nut   |
| Terminals   | quick-connect terminals<br>for 2x 2.8x0.8 mm<br>tin-plated |
| Lamp socket | BA 9 s   |
| Lamp        | filament lamp  |

#### Electrical characteristics

|                    |       |
|--------------------|-------|
| Voltage limit max. | 250 V |
| Power limit max.   | 2 W   |

#### Other specifications

|   |                    |
|---|--------------------|
| Degree of protection<br>from front side | IP65               |
| Weight                                  | 22 g               |
| Approvals                               | VDE T120°C bei 2 W |

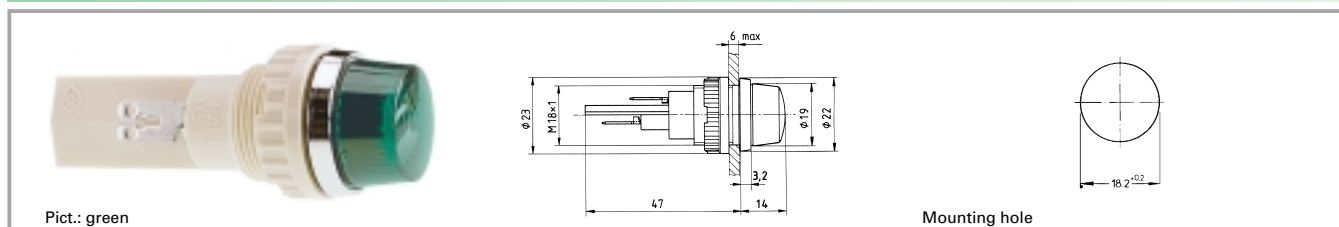
### Accessories Signal lamps with lamp socket BA 9s (MBC/MCC), 18.2 mm

| Description  | Photo | Order no.                | Page  |
|--|-------|--------------------------|-------|
| Filament lamp, BA 9s base (MBC/MCC), 12 - 15 V       |       | <b>1.90.060.132/0000</b> | 5 - 8 |
| Filament lamp, BA 9s base (MBC/MCC), 24 - 30 V       |       | <b>1.90.060.133/0000</b> | 5 - 8 |
| Filament lamp, BA 9s base (MBC/MCC), 110 - 130 V     |       | <b>1.90.060.137/0000</b> | 5 - 8 |
| Protective sleeve for terminals made of Buna N (NBR) |       | 5.52.011.027/0100        |       |

With  
Socket

## Signal lamps with lamp socket

### Signal lamps with lamp socket BA 9s (MBC/MCC), 18.2 mm, round lens



| Voltage limit max. | Power limit max. | Lamp          | Colour of lens         | Order no. complete       | Order no. single parts |                   |
|--------------------|------------------|---------------|------------------------|--------------------------|------------------------|-------------------|
|                    |                  |               |                        |                          | Housing                | Lens              |
| 250 V              | 2 W              | filament lamp | transparent colourless | <b>1.63.018.001/1002</b> | 1.63.018.091/0000      | 5.49.205.018/1002 |
| 250 V              | 2 W              | filament lamp | transparent red        | <b>1.63.018.001/1301</b> | 1.63.018.091/0000      | 5.49.205.018/1301 |
| 250 V              | 2 W              | filament lamp | transparent yellow     | <b>1.63.018.001/1402</b> | 1.63.018.091/0000      | 5.49.205.018/1402 |
| 250 V              | 2 W              | filament lamp | transparent green      | <b>1.63.018.001/1502</b> | 1.63.018.091/0000      | 5.49.205.018/1502 |

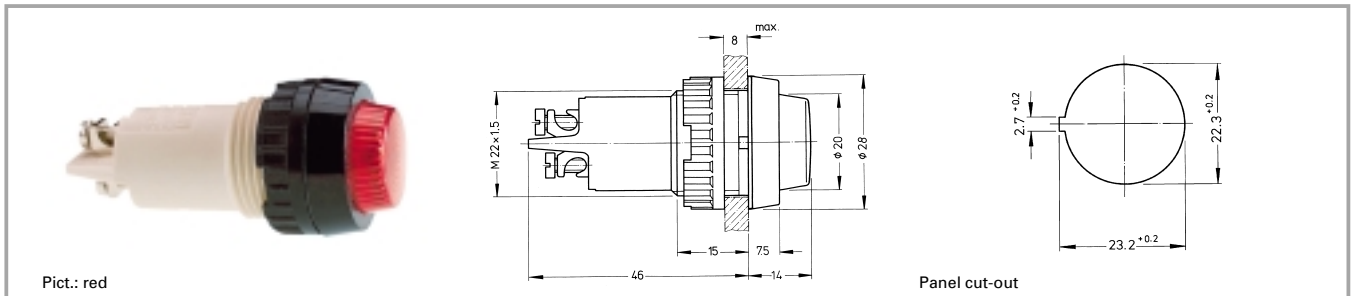
Technical data see page 3 - 48

Please order luminous elements separately. When ordering as single parts, please add 1 x sealing ring 5.30.120.009/0100 for each signal lamp to your order.

3

With Socket

### Signal lamps with lamp socket E 14, 22.3 mm



### Technical data

#### General information

|                    |                 |
|--------------------|-----------------|
| Form of lens       | round           |
| Colour of lens     | see order block |
| Diameter of collar | 28 mm           |

#### Dimensions

|                |         |
|----------------|---------|
| Overall height | 14 mm   |
| Mounting depth | 46 mm   |
| Mounting hole  | 22.3 mm |

#### Mechanical design

|             |                 |
|-------------|-----------------|
| Mounting    | ring nut        |
| Terminals   | see order block |
| Lamp socket | E 14            |
| Lamp        | filament lamp   |

#### Electrical characteristics

|                    |       |
|--------------------|-------|
| Voltage limit max. | 250 V |
| Power limit max.   | 2 W   |

#### Other specifications

|                                      |                   |
|--------------------------------------|-------------------|
| Degree of protection from front side | see order block   |
| Weight                               | 21 g              |
| Approvals 1W (T100°C)                | VDE               |
| Approvals 2W (T85°C)                 | VDE, DEMKO, NEMKO |

### Accessories Signal lamps with lamp socket E 14, 22.3 mm

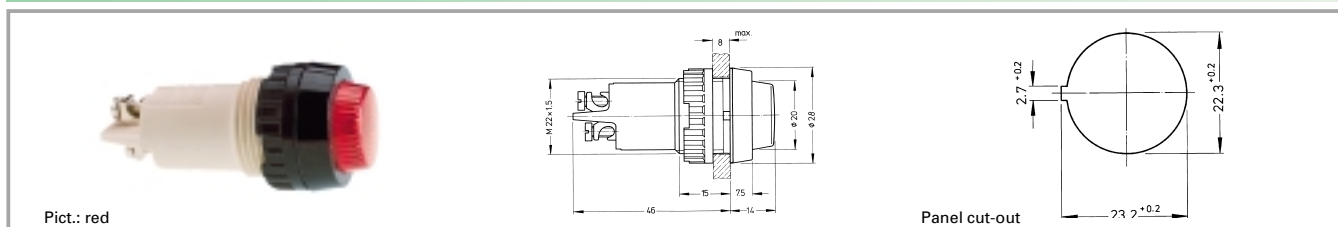
| Description  | Photo | Order no.                | Page   |
|--|-------|--------------------------|--------|
| Filament lamp, E 14 base, 24 - 30 V                  |       | <b>1.90.020.033/0000</b> | 5 - 12 |
| Sealing ring for IP65                                |       | 5.30.075.010/0100        | 5 - 31 |
| Protection against contact to VBG 4                  |       | 5.50.240.063/0209        | 5 - 32 |
| Protective sleeve for terminals made of Buna N (NBR) |       | 5.52.011.029/0100        |        |
| Fixing spanner M 20, M 22, for ring nut              |       | <b>5.58.002.018/0105</b> | 5 - 25 |

3

With Socket

## Signal lamps with lamp socket

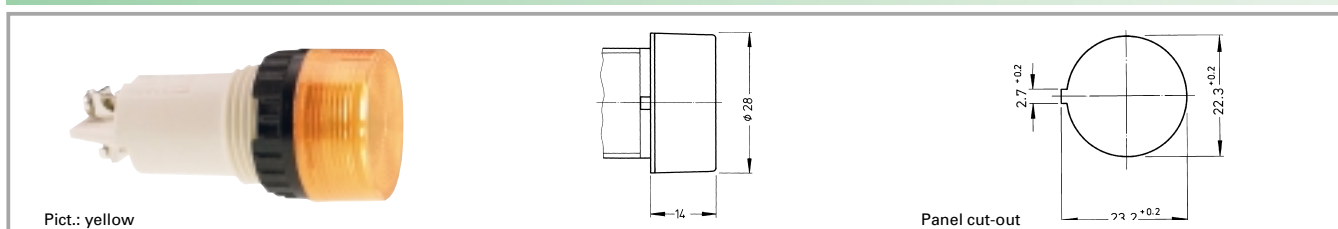
### Signal lamps with lamp socket E 14, IP40, 22.3 mm



| Voltage limit max. | Degree of protection from front | Terminals                           | Colour of lens         | Order no. complete | Order no. single parts   |                   |
|--------------------|---------------------------------|-------------------------------------|------------------------|--------------------|--------------------------|-------------------|
|                    |                                 |                                     |                        |                    | Housing                  | Lens              |
| 250 V              | IP40                            | screw terminals brass nickel-plated | transparent colourless | 1.61.012.011/1002  | <b>1.61.012.099/0000</b> | 5.00.350.726/1002 |
| 250 V              | IP40                            | screw terminals brass nickel-plated | transparent red        | 1.61.012.011/1301  | <b>1.61.012.099/0000</b> | 5.00.350.726/1301 |
| 250 V              | IP40                            | screw terminals brass nickel-plated | transparent yellow     | 1.61.012.011/1402  | <b>1.61.012.099/0000</b> | 5.00.350.726/1402 |
| 250 V              | IP40                            | screw terminals brass nickel-plated | transparent green      | 1.61.012.011/1502  | <b>1.61.012.099/0000</b> | 5.00.350.726/1502 |

Technical data see page 3 - 50

### Signal lamps with lamp socket E 14, 22.3 mm, screw-on lens, IP40



| Voltage limit max. | Degree of protection from front | Terminals                           | Colour of lens         | Order no. complete | Order no. single parts   |                          |
|--------------------|---------------------------------|-------------------------------------|------------------------|--------------------|--------------------------|--------------------------|
|                    |                                 |                                     |                        |                    | Housing                  | Lens                     |
| 250 V              | IP40                            | screw terminals brass nickel-plated | transparent colourless | 1.61.012.061/1002  | <b>1.61.012.099/0000</b> | <b>5.49.229.006/1002</b> |
| 250 V              | IP40                            | screw terminals brass nickel-plated | transparent red        | 1.61.012.061/1301  | <b>1.61.012.099/0000</b> | <b>5.49.229.006/1301</b> |
| 250 V              | IP40                            | screw terminals brass nickel-plated | transparent yellow     | 1.61.012.061/1402  | <b>1.61.012.099/0000</b> | <b>5.49.229.006/1402</b> |
| 250 V              | IP40                            | screw terminals brass nickel-plated | transparent green      | 1.61.012.061/1502  | <b>1.61.012.099/0000</b> | <b>5.49.229.006/1502</b> |

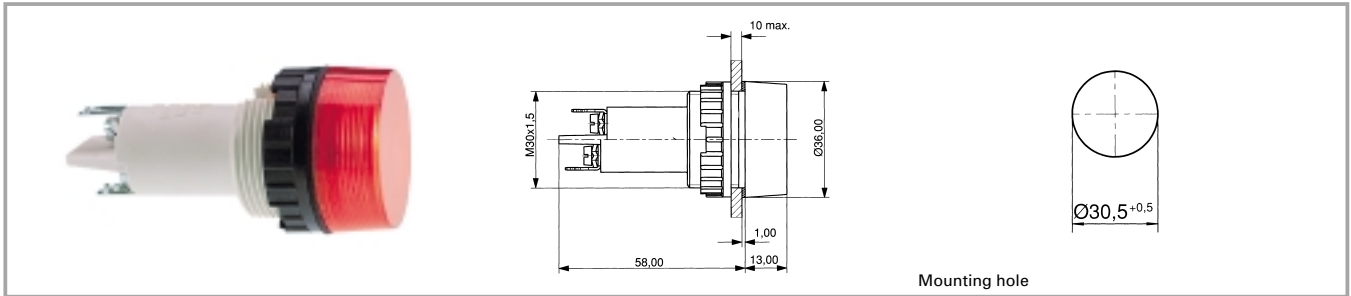
Technical data see page 3 - 50

3

With Socket



### Signal lamps with lamp socket E 14, 30.5 mm



### Technical data

#### General information

|                    |                 |
|--------------------|-----------------|
| Form of lens       | round           |
| Colour of lens     | see order block |
| Diameter of collar | 36 mm           |

#### Electrical characteristics

|                    |       |
|--------------------|-------|
| Voltage limit max. | 250 V |
| Power limit max.   | 5 W   |

#### Dimensions

|                |                 |
|----------------|-----------------|
| Overall height | see order block |
| Mounting depth | 58 mm           |
| Mounting hole  | 30.5 mm         |

#### Other specifications

|                                      |                 |
|--------------------------------------|-----------------|
| Degree of protection from front side | see order block |
| Weight                               | 40 g            |

#### Mechanical design

|             |  |
|-------------|--|
| Mounting    | ring nut   |
| Terminals   | screw-terminals and quick-connect terminals for 2 x 2.8 x 0.8 mm |
| Lamp socket | E 14   |
| Lamp        | filament lamp  |

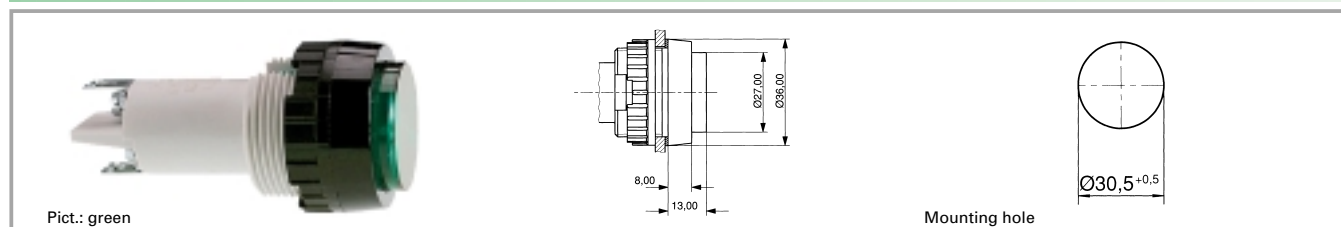
### Accessories Signal lamps with lamp socket E 14, 30.5 mm

With Socket

| Description                         | Photo | Order no.         | Page   |
|-------------------------------------|-------|-------------------|--------|
| Protection against contact to VBG 5 |       | 5.50.240.065/0200 | 5 - 32 |
| Protective sleeve for terminals     |       | 5.52.011.031/0100 |        |
| Fixing spanner M 25, M 30           |       | 5.58.002.020/0105 | 5 - 25 |

## Signal lamps with lamp socket

### Signal lamps with lamp socket E 14, IP40, 30.5 mm



| Voltage limit max. | Power limit max. | Degree of protection from front side | Colour of lens         | Order no. complete | Order no. single parts |                   |
|--------------------|------------------|--------------------------------------|------------------------|--------------------|------------------------|-------------------|
|                    |                  |                                      |                        |                    | Housing                | Lens              |
| 250 V              | 5 W              | IP40                                 | transparent colourless | 1.61.021.004/1002  | 1.61.021.099/0000      | 5.00.350.013/1002 |
| 250 V              | 5 W              | IP40                                 | transparent red        | 1.61.021.004/1301  | 1.61.021.099/0000      | 5.00.350.013/1301 |
| 250 V              | 5 W              | IP40                                 | transparent yellow     | 1.61.021.004/1402  | 1.61.021.099/0000      | 5.00.350.013/1402 |
| 250 V              | 5 W              | IP40                                 | transparent green      | 1.61.021.004/1502  | 1.61.021.099/0000      | 5.00.350.013/1502 |

Technical data see page 3 - 52

#### Accessories:

Filament lamp, E 14 base, 24 - 30 V: **1.90.020.033/0000**

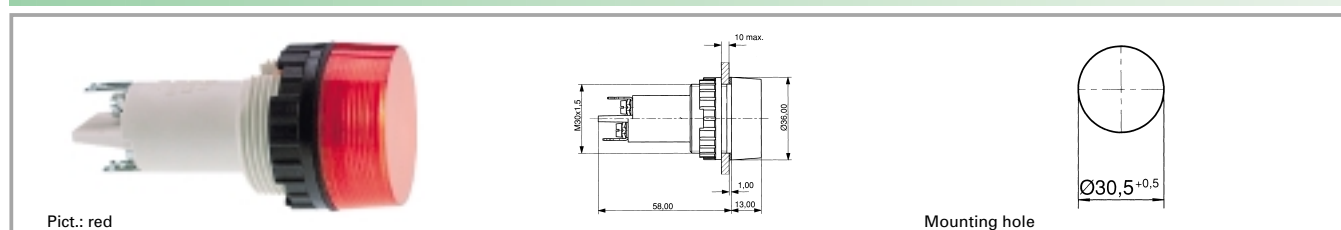
Filament lamp, E 14 base, 24 V: **1.90.020.053/0000**

Filament lamp, E 14 base, 220 - 260 V: **1.90.020.061/0000**

Single-wire screw terminal with clamp: 2 x 0.75 to 2.5 mm<sup>2</sup>, stranded core with wire end sleeve: 2 x 0.75 to 1.5 mm<sup>2</sup>, quick-connect terminal suitable for 2 x 2.8 x 0.8 tin-plated for soldering.

3

### Signal lamps with lamp socket E 14, IP40, 30.5 mm



| Voltage limit max. | Power limit max. | Degree of protection from front side | Colour of lens         | Order no. complete | Order no. single parts |                   |
|--------------------|------------------|--------------------------------------|------------------------|--------------------|------------------------|-------------------|
|                    |                  |                                      |                        |                    | Housing                | Lens              |
| 250 V              | 5 W              | IP40                                 | transparent colourless | 1.61.021.001/1002  | 1.61.021.099/0000      | 5.49.233.005/1002 |
| 250 V              | 5 W              | IP40                                 | transparent red        | 1.61.021.001/1301  | 1.61.021.099/0000      | 5.49.233.005/1301 |
| 250 V              | 5 W              | IP40                                 | transparent yellow     | 1.61.021.001/1402  | 1.61.021.099/0000      | 5.49.233.005/1402 |
| 250 V              | 5 W              | IP40                                 | transparent green      | 1.61.021.001/1502  | 1.61.021.099/0000      | 5.49.233.005/1502 |

Technical data see page 3 - 52

#### Accessories:

Filament lamp, E 14 base, 24 - 30 V: **1.90.020.033/0000**

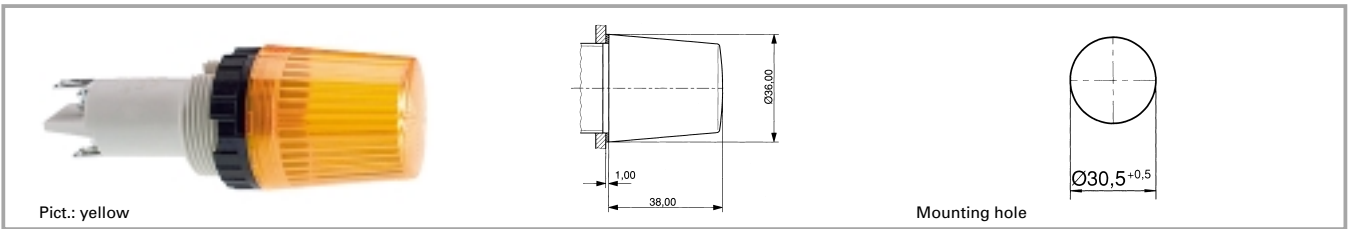
Filament lamp, E 14 base, 24 V: **1.90.020.053/0000**

Filament lamp, E 14 base, 220 - 260 V: **1.90.020.061/0000**

Single-wire screw terminal with clamp: 2 x 0.75 to 2.5 mm<sup>2</sup>, stranded core with wire end sleeve: 2 x 0.75 to 1.5 mm<sup>2</sup>, quick-connect terminal suitable for 2 x 2.8 x 0.8 tin-plated for soldering.

With Socket

### Signal lamps with lamp socket E 14, IP40, 30.5 mm



| Voltage limit max. | Power limit max. | Degree of protection from front side | Colour of lens         | Order no. complete | Order no. single parts   |                          |
|--------------------|------------------|--------------------------------------|------------------------|--------------------|--------------------------|--------------------------|
|                    |                  |                                      |                        |                    | Housing                  | Lens                     |
| 250 V              | 5 W              | IP40                                 | transparent colourless | 1.61.021.011/1002  | <b>1.61.021.099/0000</b> | <b>5.49.233.008/1002</b> |
| 250 V              | 5 W              | IP40                                 | transparent red        | 1.61.021.011/1301  | <b>1.61.021.099/0000</b> | <b>5.49.233.008/1301</b> |
| 250 V              | 5 W              | IP40                                 | transparent yellow     | 1.61.021.011/1402  | <b>1.61.021.099/0000</b> | <b>5.49.233.008/1402</b> |
| 250 V              | 5 W              | IP40                                 | transparent green      | 1.61.021.011/1502  | <b>1.61.021.099/0000</b> | <b>5.49.233.008/1502</b> |

Technical data see page 3 - 52

#### Accessories:

Filament lamp, E 14 base, 24 - 30 V: **1.90.020.105/0000**

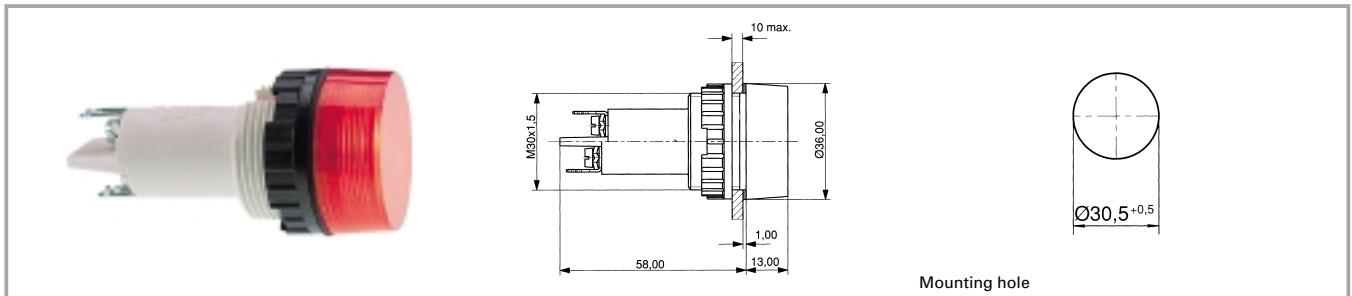
Filament lamp, E 14 base, 220 - 260 V: **1.90.020.115/0000**

Single-wire screw terminal with clamp: 2 x 0.75 to 2.5 mm<sup>2</sup>, stranded core with wire end sleeve: 2 x 0.75 to 1.5 mm<sup>2</sup>, quick-connect terminal suitable for 2 x 2.8 x 0.8 tin-plated for soldering.

3

With  
Socket

### Signal lamps with lamp socket BA 15d, 30.5 mm



### Technical data

#### General information

Form of lens round  
 Colour of lens see order block  
 Diameter of collar 36 mm

#### Dimensions

Overall height see order block  
 Mounting depth 58 mm  
 Mounting hole 30.5 mm

#### Mechanical design

Mounting ring nut  
 Terminals screw-terminals and quick-connect terminals for 2 x 2.8 x 0.8 mm  
 Lamp socket BA 15 d  
 Lamp filament lamp

#### Electrical characteristics

Voltage limit max. 250 V  
 Power limit max. 5 W

#### Other specifications

Degree of protection from front side see order block  
 Weight 40 g

3

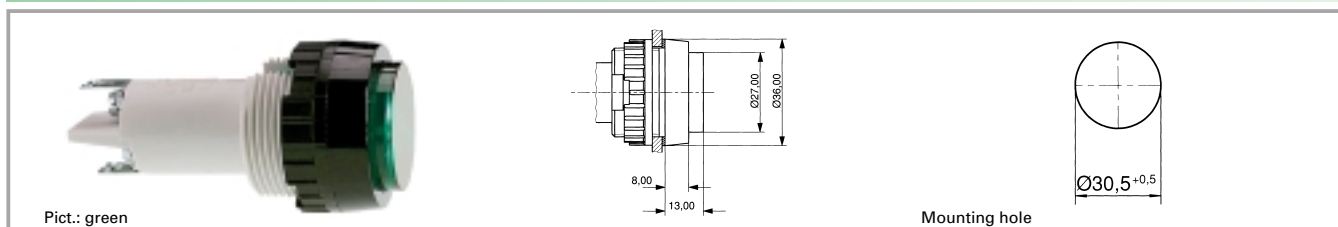
### Accessories Signal lamps with lamp socket BA 15d, 30.5 mm

With Socket

| Description                         | Photo | Order no.         | Page   |
|-------------------------------------|-------|-------------------|--------|
| Protection against contact to VBG 5 |       | 5.50.240.065/0200 | 5 - 32 |
| Protective sleeve                   |       | 5.52.011.031/0100 |        |
| Fixing spanner M 25, M 30           |       | 5.58.002.020/0105 | 5 - 25 |

## Signal lamps with lamp socket

### Signal lamps with lamp socket BA 15d, IP40, 30.5 mm



| Voltage limit max. | Power limit max. | Degree of protection from front side | Colour of lens         | Order no. complete | Order no. single parts   |                          |
|--------------------|------------------|--------------------------------------|------------------------|--------------------|--------------------------|--------------------------|
|                    |                  |                                      |                        |                    | Housing                  | Lens                     |
| 250 V              | 5 W              | IP40                                 | transparent colourless | 1.63.521.004/1002  | <b>1.63.521.099/0000</b> | <b>5.00.350.013/1002</b> |
| 250 V              | 5 W              | IP40                                 | transparent red        | 1.63.521.004/1301  | <b>1.63.521.099/0000</b> | <b>5.00.350.013/1301</b> |
| 250 V              | 5 W              | IP40                                 | transparent yellow     | 1.63.521.004/1402  | <b>1.63.521.099/0000</b> | <b>5.00.350.013/1402</b> |
| 250 V              | 5 W              | IP40                                 | transparent green      | 1.63.521.004/1502  | <b>1.63.521.099/0000</b> | <b>5.00.350.013/1502</b> |

Technical data see page 3 - 56

#### Accessories:

Filament lamp, BA 15d base, 12 - 15 V: **1.90.070.003/0000**

Filament lamp, BA 15d base, 24 - 30 V: **1.90.070.004/0000**

Filament lamp, BA 15d base, 24 V: **1.90.070.053/0000**

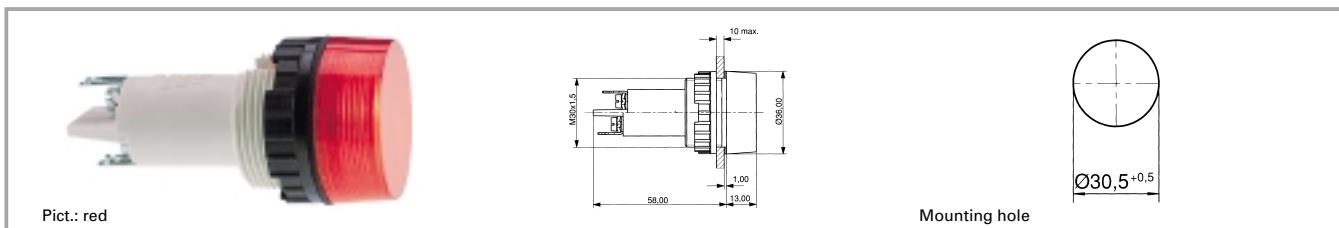
Filament lamp, BA 15d base, 220 - 260 V: **1.90.070.061/0000**

Single-wire screw terminal with clamp: 2 x 0.75 to 2.5 mm<sup>2</sup>, stranded core with wire end sleeve: 2 x 0.75 to 1.5 mm<sup>2</sup>, quick-connect terminal suitable for 2 x 2.8 x 0.8 tin-plated for soldering.

3

With  
Socket

### Signal lamps with lamp socket BA 15d, IP40, 30.5 mm



| Voltage limit max. | Power limit max. | Degree of protection from front side | Colour of lens         | Order no. complete | Order no. single parts   |                          |
|--------------------|------------------|--------------------------------------|------------------------|--------------------|--------------------------|--------------------------|
|                    |                  |                                      |                        |                    | Housing                  | Lens                     |
| 250 V              | 5 W              | IP40                                 | transparent colourless | 1.63.521.001/1002  | <b>1.63.521.099/0000</b> | <b>5.49.233.005/1002</b> |
| 250 V              | 5 W              | IP40                                 | transparent red        | 1.63.521.001/1301  | <b>1.63.521.099/0000</b> | <b>5.49.233.005/1301</b> |
| 250 V              | 5 W              | IP40                                 | transparent yellow     | 1.63.521.001/1402  | <b>1.63.521.099/0000</b> | <b>5.49.233.005/1402</b> |
| 250 V              | 5 W              | IP40                                 | transparent green      | 1.63.521.001/1502  | <b>1.63.521.099/0000</b> | <b>5.49.233.005/1502</b> |

Technical data see page 3 - 56

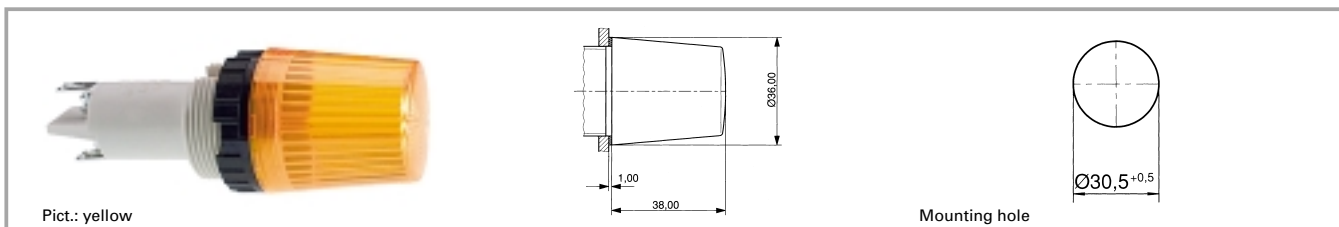
#### Accessories:

- Filament lamp, BA 15d base, 12 - 15 V: **1.90.070.003/0000**
- Filament lamp, BA 15d base, 24 - 30 V: **1.90.070.004/0000**
- Filament lamp, BA 15d base, 24 V: **1.90.070.053/0000**
- Filament lamp, BA 15d base, 220 - 260 V: **1.90.070.061/0000**

Single-wire screw terminal with clamp: 2 x 0.75 to 2.5 mm<sup>2</sup>, stranded core with wire end sleeve: 2 x 0.75 to 1.5 mm<sup>2</sup>, quick-connect terminal suitable for 2 x 2.8 x 0.8 tin-plated for soldering.

3

### Signal lamps with lamp socket BA 15d, IP40, 30.5 mm



| Voltage limit max. | Power limit max. | Degree of protection from front side | Colour of lens         | Order no. complete | Order no. single parts   |                          |
|--------------------|------------------|--------------------------------------|------------------------|--------------------|--------------------------|--------------------------|
|                    |                  |                                      |                        |                    | Housing                  | Lens                     |
| 250 V              | 5 W              | IP40                                 | transparent colourless | 1.63.521.011/1002  | <b>1.63.521.099/0000</b> | <b>5.49.233.008/1002</b> |
| 250 V              | 5 W              | IP40                                 | transparent red        | 1.63.521.011/1301  | <b>1.63.521.099/0000</b> | <b>5.49.233.008/1301</b> |
| 250 V              | 5 W              | IP40                                 | transparent yellow     | 1.63.521.011/1402  | <b>1.63.521.099/0000</b> | <b>5.49.233.008/1402</b> |
| 250 V              | 5 W              | IP40                                 | transparent green      | 1.63.521.011/1502  | <b>1.63.521.099/0000</b> | <b>5.49.233.008/1502</b> |

Technical data see page 3 - 56

#### Accessories:

- Filament lamp, BA 15d base, 24 - 30 V: **1.90.070.105/0000**
- Filament lamp, BA 15d base, 220 - 260 V: **1.90.070.109/0000**

Single-wire screw terminal with clamp: 2 x 0.75 to 2.5 mm<sup>2</sup>, stranded core with wire end sleeve: 2 x 0.75 to 1.5 mm<sup>2</sup>, quick-connect terminal suitable for 2 x 2.8 x 0.8 tin-plated for soldering.

With Socket