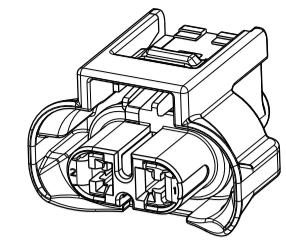
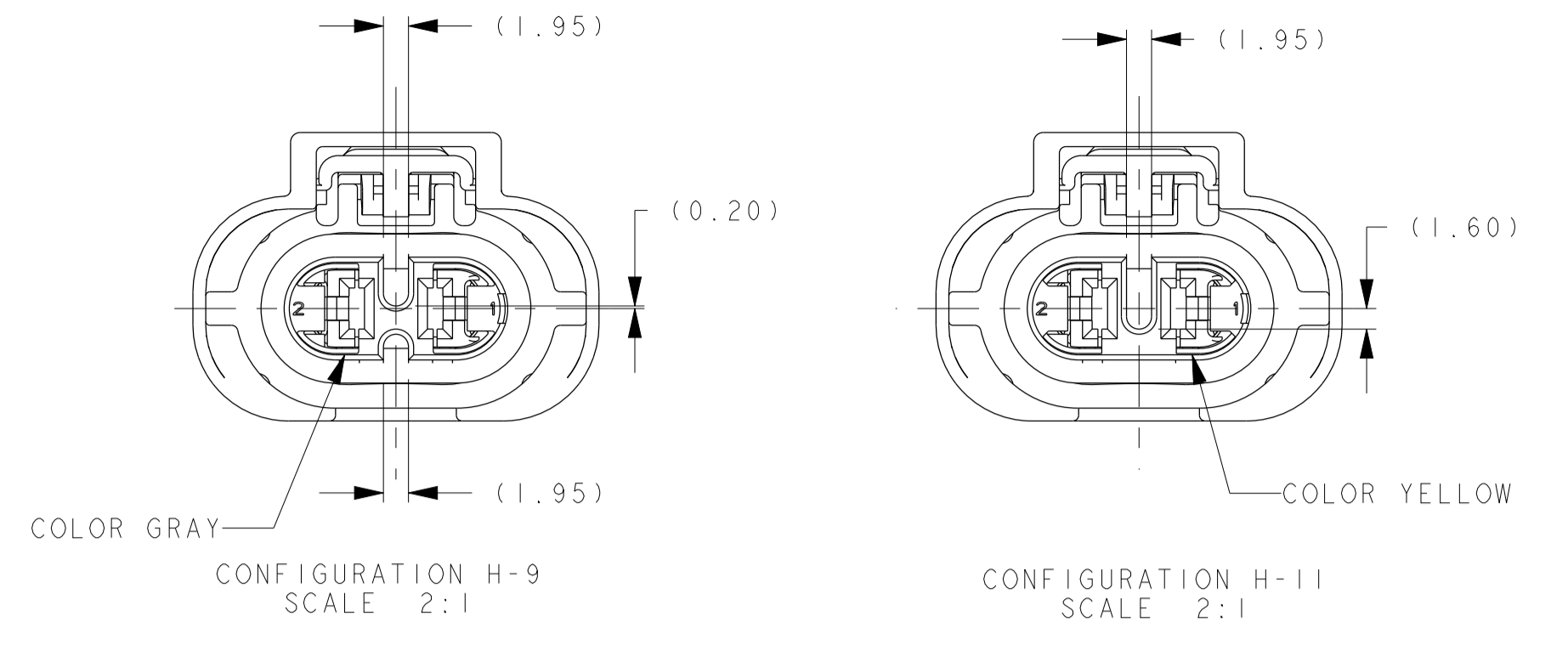


COMPONENTS LIST							
CONFIGURATION	CUST PART NO.		PART NUMBERS				
	GM	ASSY PART NO.	ITEM 1 TPA	ITEM 1 TPA COLOR	ITEM 2 SEAL	ITEM 3 HOUSING	ITEM 4 CPA
H-9 WITH CPA	-	F984300	C594300	GRAY	240M041	S394300	F752210
H-11 WITH CPA	-	F094300	C494300	YELLOW			
H-9 W/O CPA	13576003	F294300	C594300	GRAY	240M041	S394300	N/A
H-11 W/O CPA	13576004	F194300	C494300	YELLOW			

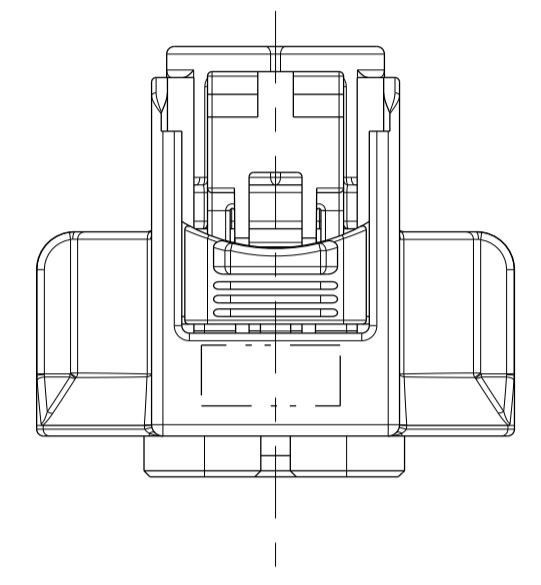


SCALE 1:1

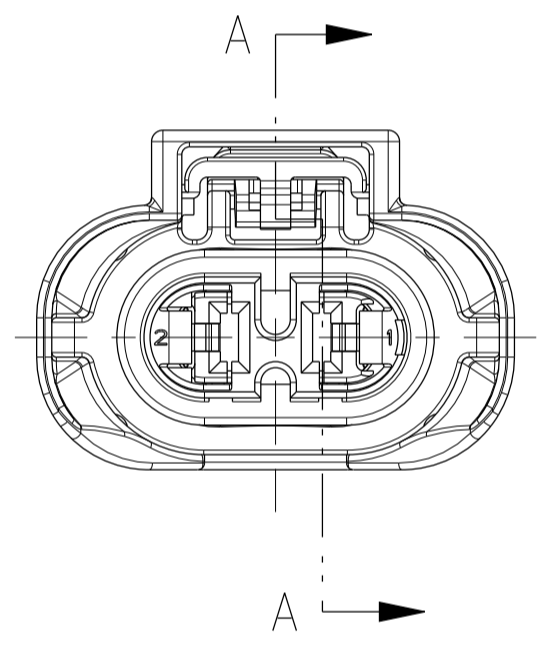
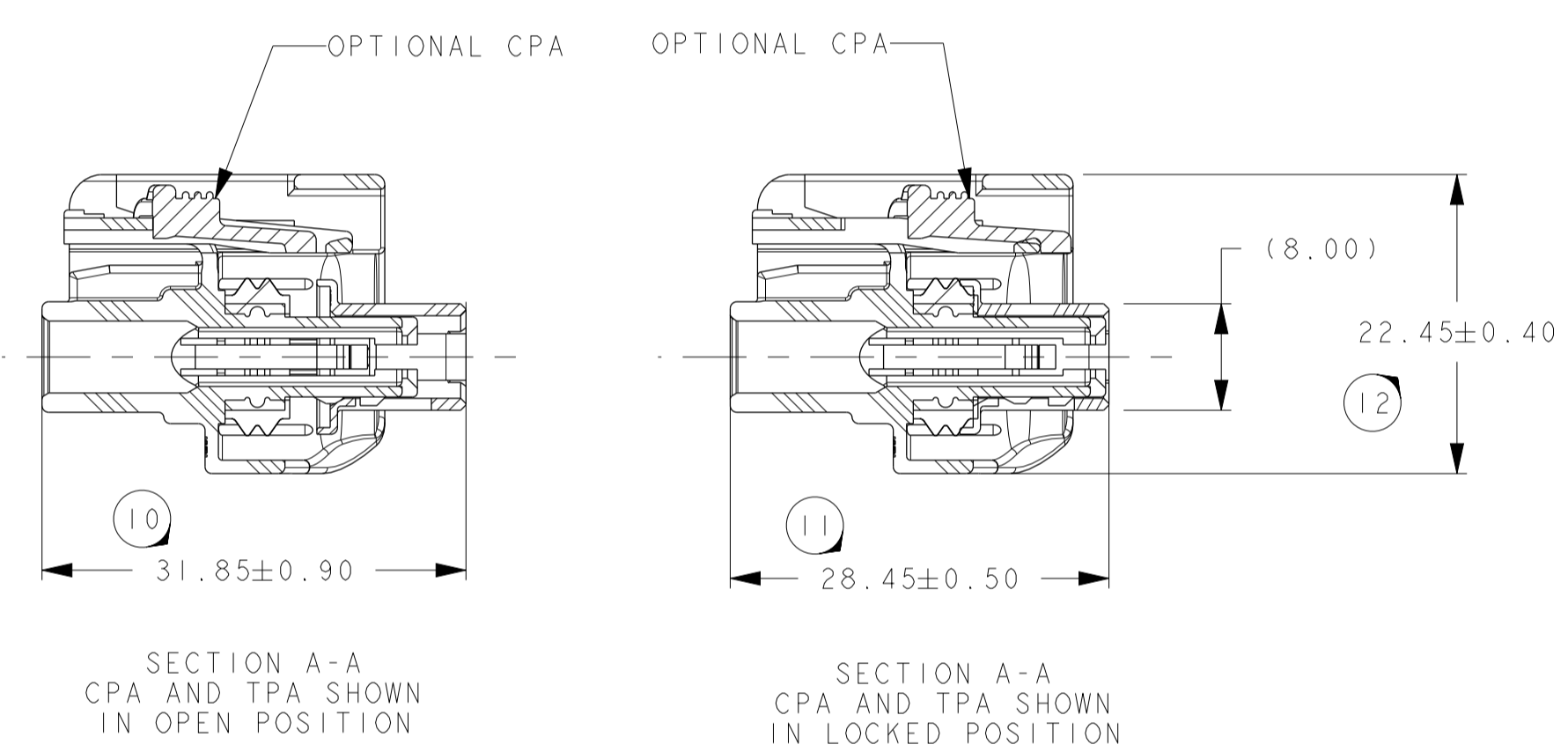


POLARIZATION OPTIONS

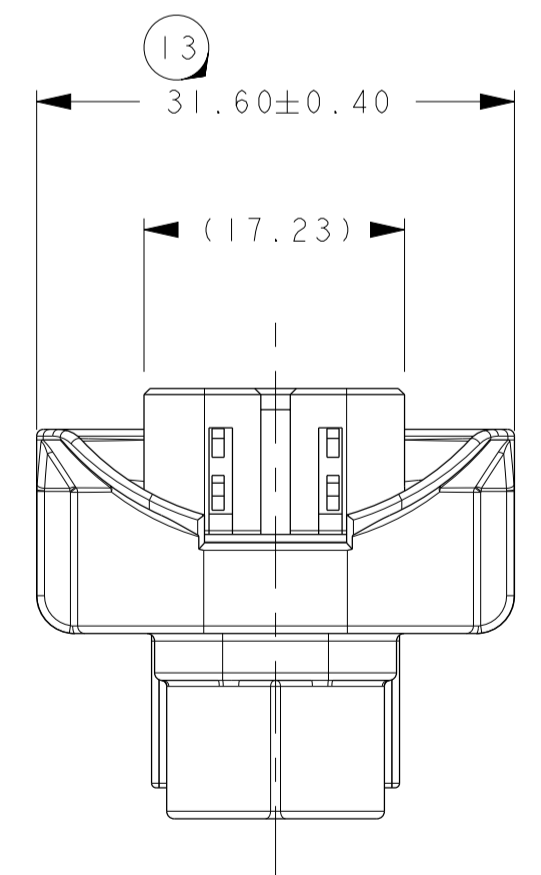
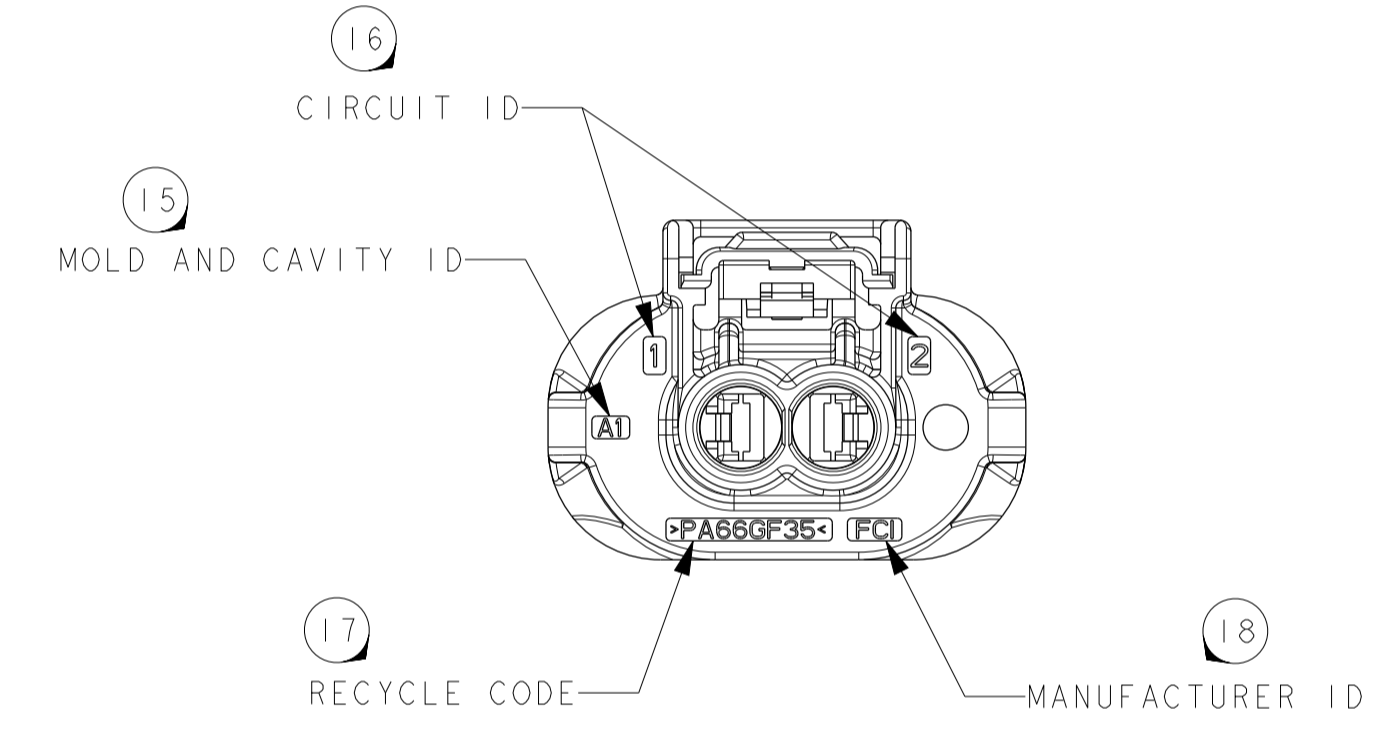
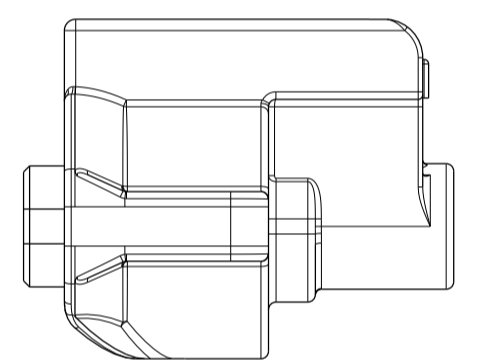
APPLICABLE COMPONENTS - SEE NOTE #1				
FCI PART NUMBER	ITEM DESCRIPTION	GRIP CODE	WIRE SIZE	WIRE INSULATION DIAMETER RANGE
54001410	FCI APEX 2.8 FEMALE TERMINAL GOLD	14AU	16/14 AWG 1.50-2.50mm <sup>2</sup>	2.18mm-3.00mm
54001448	FCI APEX 2.8 FEMALE TERMINAL GOLD (FORD)	14AU	16/14 AWG 1.50-2.50mm <sup>2</sup>	2.18mm-3.00mm
F576000	CABLE SEAL (BLUE)	-	16/14 AWG 1.50-2.00mm <sup>2</sup>	2.20mm-2.80mm
60994034	CABLE SEAL (YELLOW)	-	2.50mm <sup>2</sup>	2.70mm-3.00mm



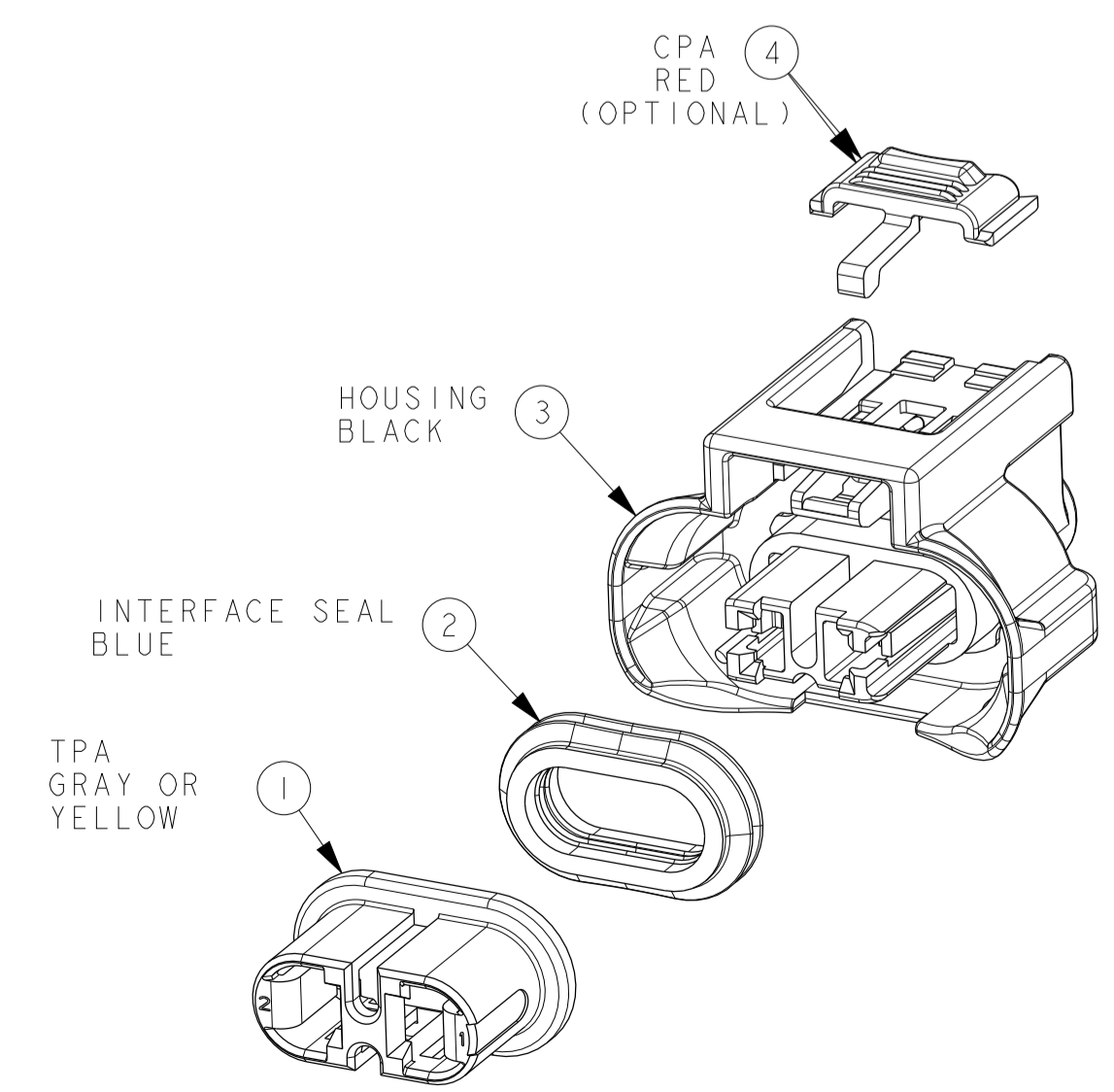
SCALE 2:1



SCALE 2:1



SCALE 2:1



SCALE 2:1

NOTES UNLESS OTHERWISE SPECIFIED:

- BULB HEATING EFFECT IN LIGHTING APPLICATIONS MUST BE CONSIDERED BY THE SPECIFYING PARTY AS TO APPROPRIATE WIRE, CABLE SEAL, AND TERMINAL SELECTION AND FOR EACH LIGHTING SYSTEM'S VALIDATION TESTING. USE OF LARGEST CONDUCTOR WIRE WITH 150°C RATING IS STRONGLY RECOMMENDED IN ALL BULB OR OTHER SELF-HEATING APPLICATIONS.
- TEST METHOD PER USCAR-2 REV 5 TESTED TO TEMPERATURE CLASS III (125°C) (BULB HEATING EFFECT NOT INCLUDED)
- CONNECTOR TO BE USED WITH THE FOLLOWING RANGE OF WIRE SIZES AND TYPES:
  - WIRE SIZES: 1.50mm<sup>2</sup> - 2.50mm<sup>2</sup> AND 16 GAGE TO 14 GAGE.
  - OUTSIDE DIAMETER: 2.18mm MIN O.D. TO 3.00mm MAX O.D.
  - TYPE/STANDARD: MIL123-A, MS-8288, M3075, FLR2X
 CONTACT FCI ENGINEERING REGARDING USE OF OTHER WIRE SIZES OR TYPES. SEE NOTE #1.
- SEE FCI DRAWING C15004-CUST FOR TERMINAL CRIMPING REQUIREMENTS.
- ANNUAL QUALITY REQUIREMENTS: IT IS PERMISSIBLE TO PERFORM CONTINUOUS CONFORMANCE PER FCI SPECIFICATION AQA-001 INSTEAD OF ANNUAL LAYOUT AND ANNUAL PV REQUIREMENTS OF QS-9000 SECTION 2 AND SAE/USCAR-2.

12-00438 CL CHART/CPA F72210 WAS 54200016		NOTES REVISED NOTE 1	
		NOTES REVISED NOTE 4	
		AP CHART REMOVED TERMINALS 54001811 & 54001879, REMOVED CABLE SEAL F676000	
		AP CHART CORRECTED MINIMUM WIRE SIZE; 1.5mm <sup>2</sup> WAS 1.0mm <sup>2</sup>	
		VIEWS CORRECTED SEAL DEPICTION	
11981	MIS	ADD GM PART NUMBERS	
		AP CHART ADD GRIP CODE AND WIRE SIZE COLUMNS	
		NOTES REVISE NOTE 4	
11633	F15,F13	31.85±0.90 was 31.15±0.90 , 28.45±0.50 was 27.75±0.50	
		NOTES NOTES RENUMBERED AND REVISED	
		AP CHART APPLICABLE CABLE SEALS REVISED	
11157		RELEASED FOR PRODUCTION (REV C)	
FCI NO.	ZONE	CHANGE DESCRIPTION	
PRODUCT SPEC:		PACKAGING SPEC:	APPLICATION SPEC:
THIS DRAWING AND ALL OTHER INFORMATION CONTAINED THEREIN IS PROPRIETARY AND THE PROPERTY OF FCI. THIS DRAWING MAY NOT BE COPIED, REPRODUCED OR DISCLOSED TO ANY THIRD PARTY WITHOUT THE EXPRESSED WRITTEN PERMISSION OF FCI. FCI April 10, 1999			
TOLERANCES	±0.1	±2*	MATERIAL:
CONTRIBUTOR:			SURFACE FINISH
DO NOT MEASURE DRAWING			COLOUR:
DATE			TOOL NO.
CREATED BY	2008/02/08		ECO Loc. C446 AN
MODIFIED BY	2013/06/11		
CHECKED BY	2013/06/11		
APPROVED BY	2013/06/11		
FILE NAME	PCC0558541		
DRAWING NUMBER		REV.	
PCC0558541		F	
PROJECT		STATE	
2 WAY FEMALE 28 APEX CONNECTOR		SERIAL RELEASED	
PART NUMBER		REV.	
PGJ 19 LAMP CONNECTOR			
DRAWING NUMBER		REV.	
PCC0558541			
DOCUMENT UNDER PDS CONTROL. NO MODIFICATION ALLOWED OUTSIDE		See Table	