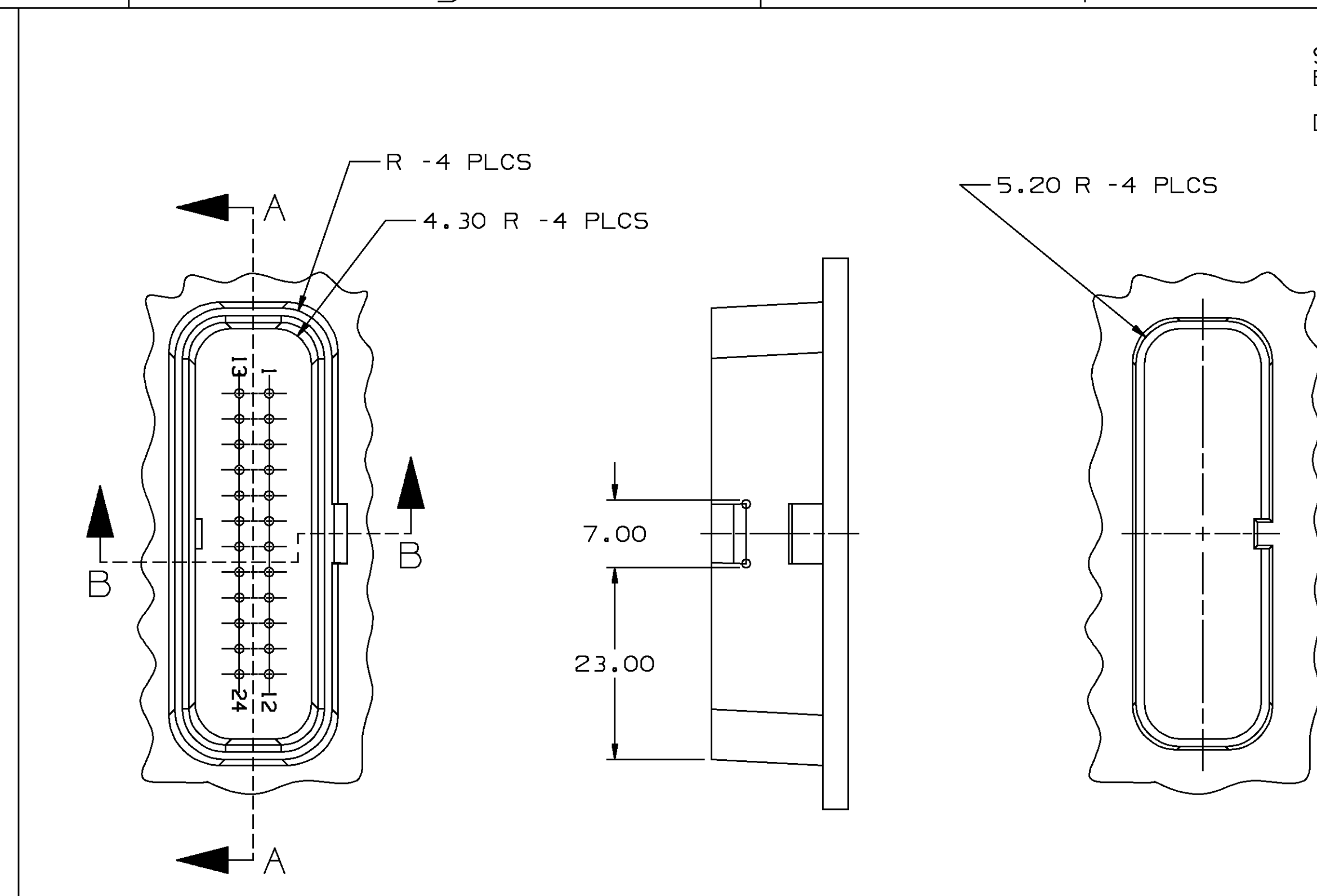


- NOTES:
1. RECOMMENDED BOARD THICKNESS IS 1.50 MM.
  2. SOLDER - THRU HOLE RECOMMENDED.

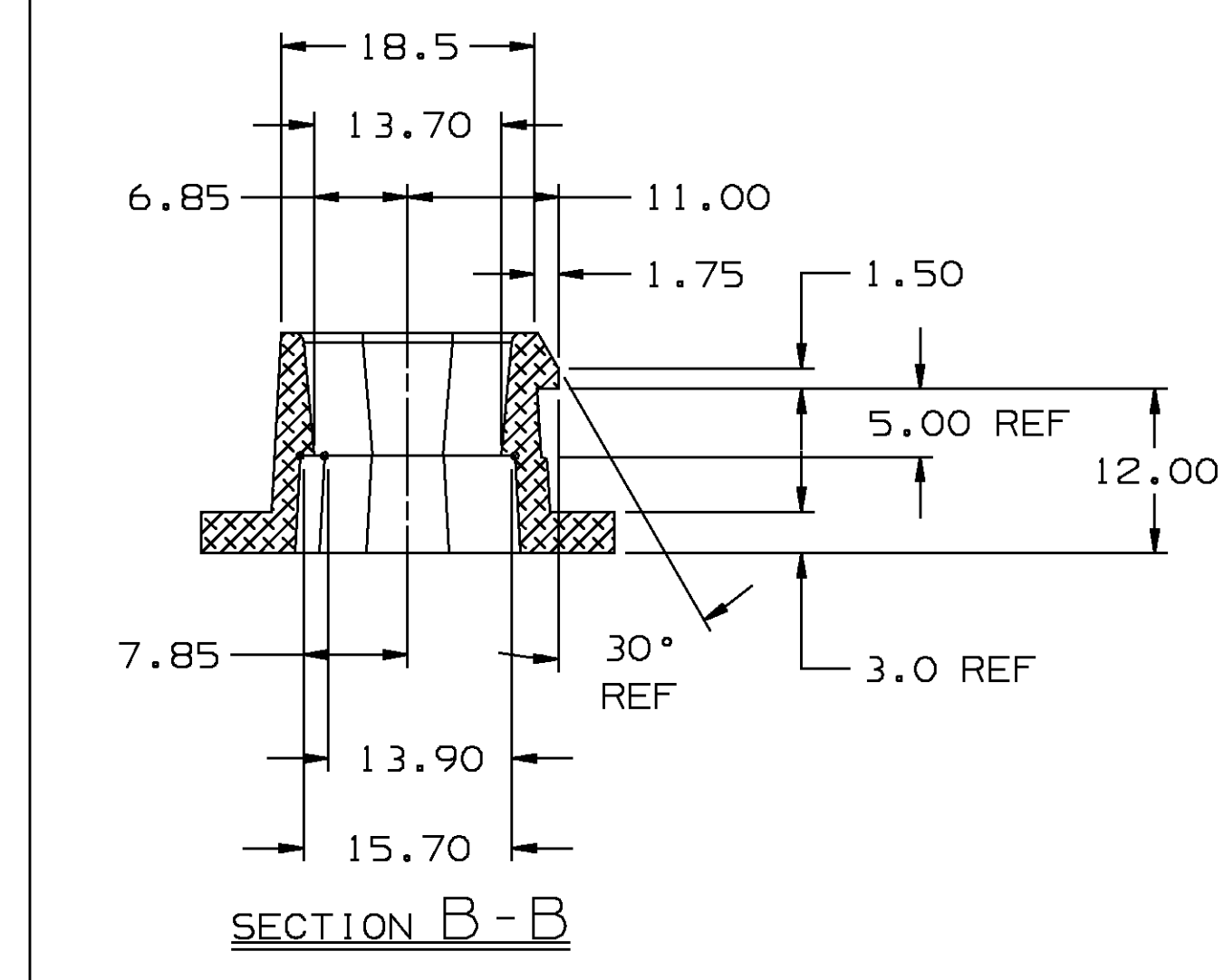
MATING CIRCUIT BOARD  
CONNECTOR MATING SIDE  
SCALE 2:1



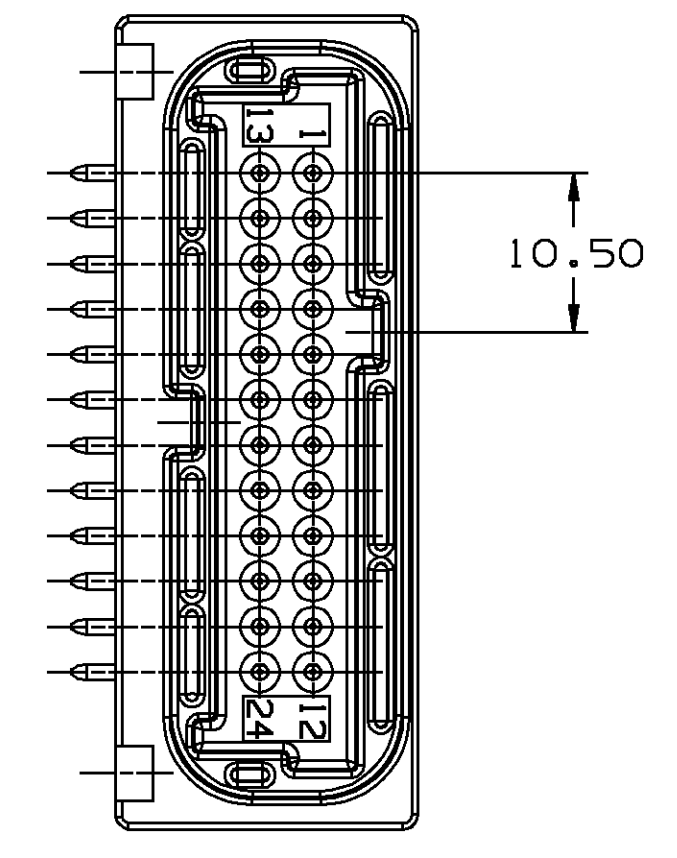
SEALING SURFACE MUST BE SMOOTH AND FREE OF IMPERFECTIONS FOR DISTANCE SHOWN.

- NOTES:
1. UNLESS OTHERWISE SPECIFIED AND/OR INDICATED: DIMENSIONS ARE TO FACE OF VIEW SHOWN AND AUTOMATICALLY ROUNDED BY COMPUTER FOR INSPECTION. (SEE MATH MODEL FOR PRECISE DIMENSION) FOR ALL OTHER DIMENSIONS NOT SHOWN BUT REQUIRED FOR TOOL BUILD, SEE MATH MODEL FOR PRECISE TOOL PATH DATA.
  2. WHEN USING THIS INFORMATION FOR A NEW DESIGN REQUEST THE LATEST COPY OF THIS PRINT FROM PACKARD ELECTRIC DIVISION.

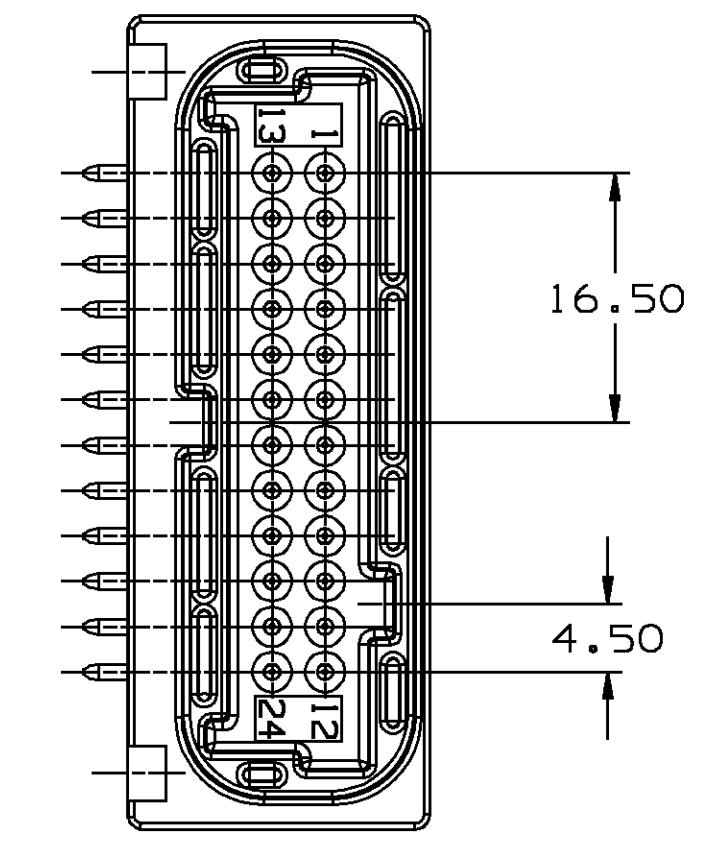
MATING INFORMATION CAST SEALING SHROUD  
SCALE 2:1



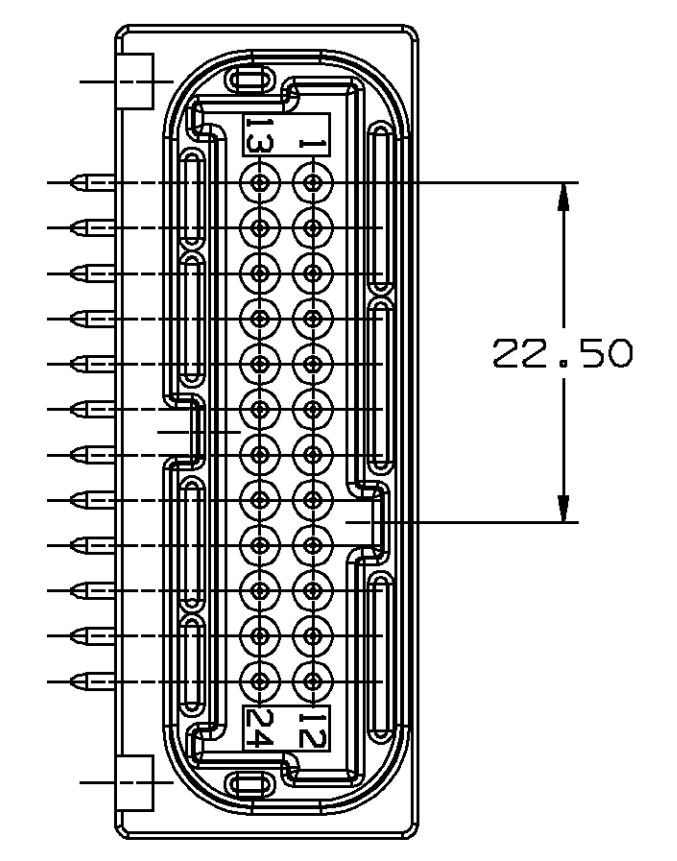
DELPHI PACKARD ELECTRIC SYSTEMS  
WARREN, OHIO 44480



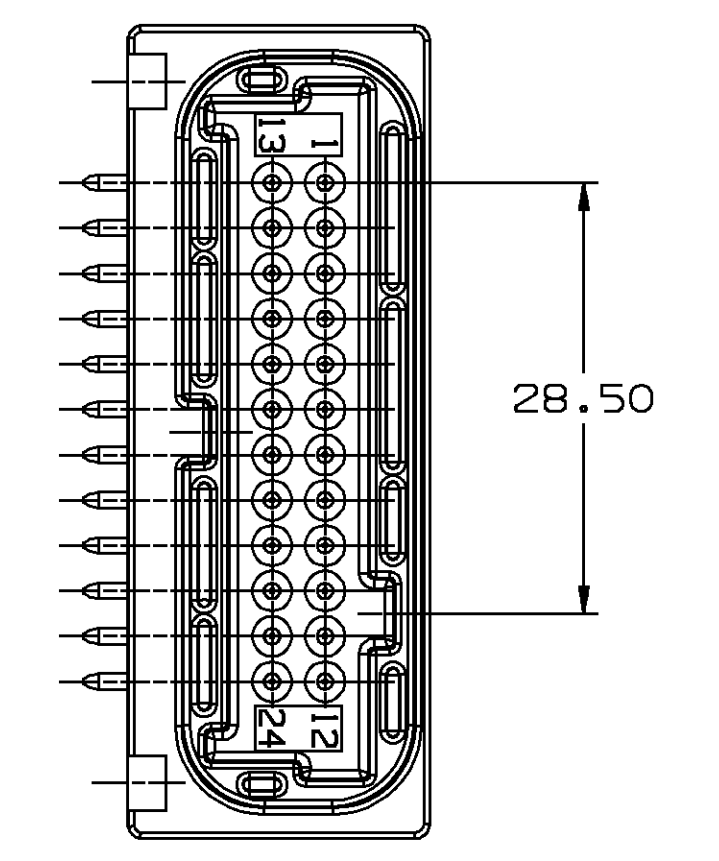
TYPE 102  
SAME AS TYPE 101 EXCEPT AS SHOWN



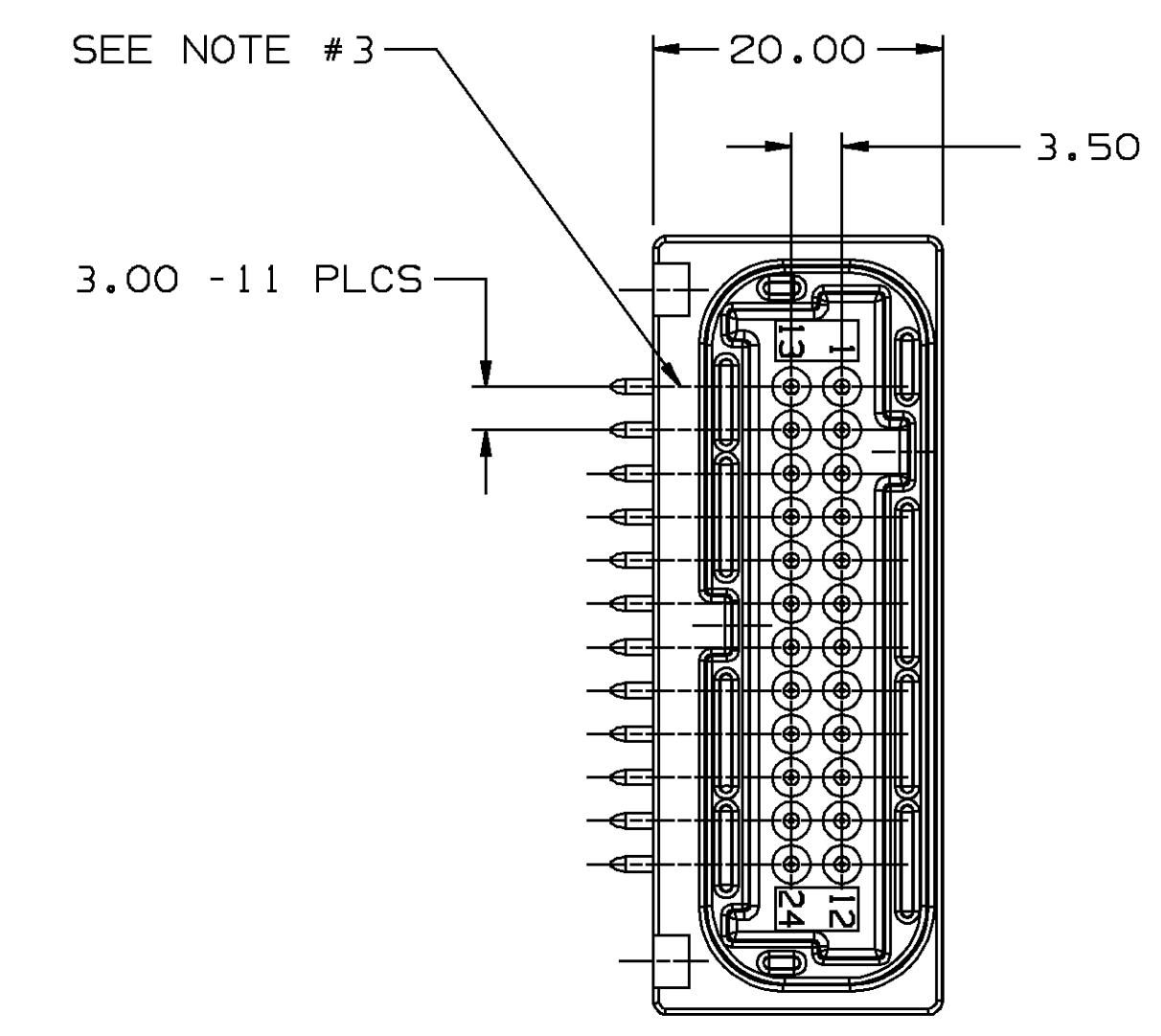
TYPE 103  
SAME AS TYPE 101 EXCEPT AS SHOWN



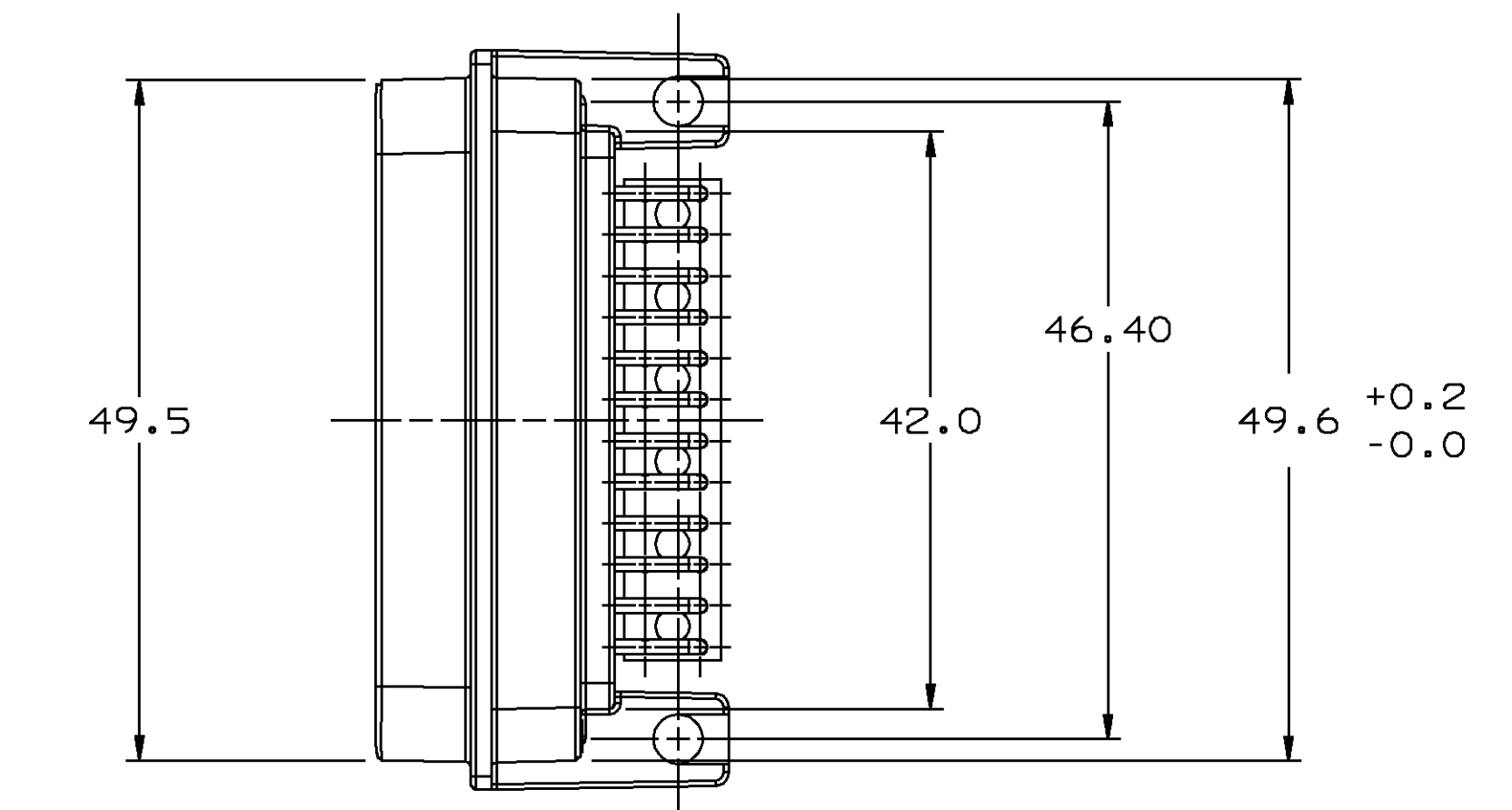
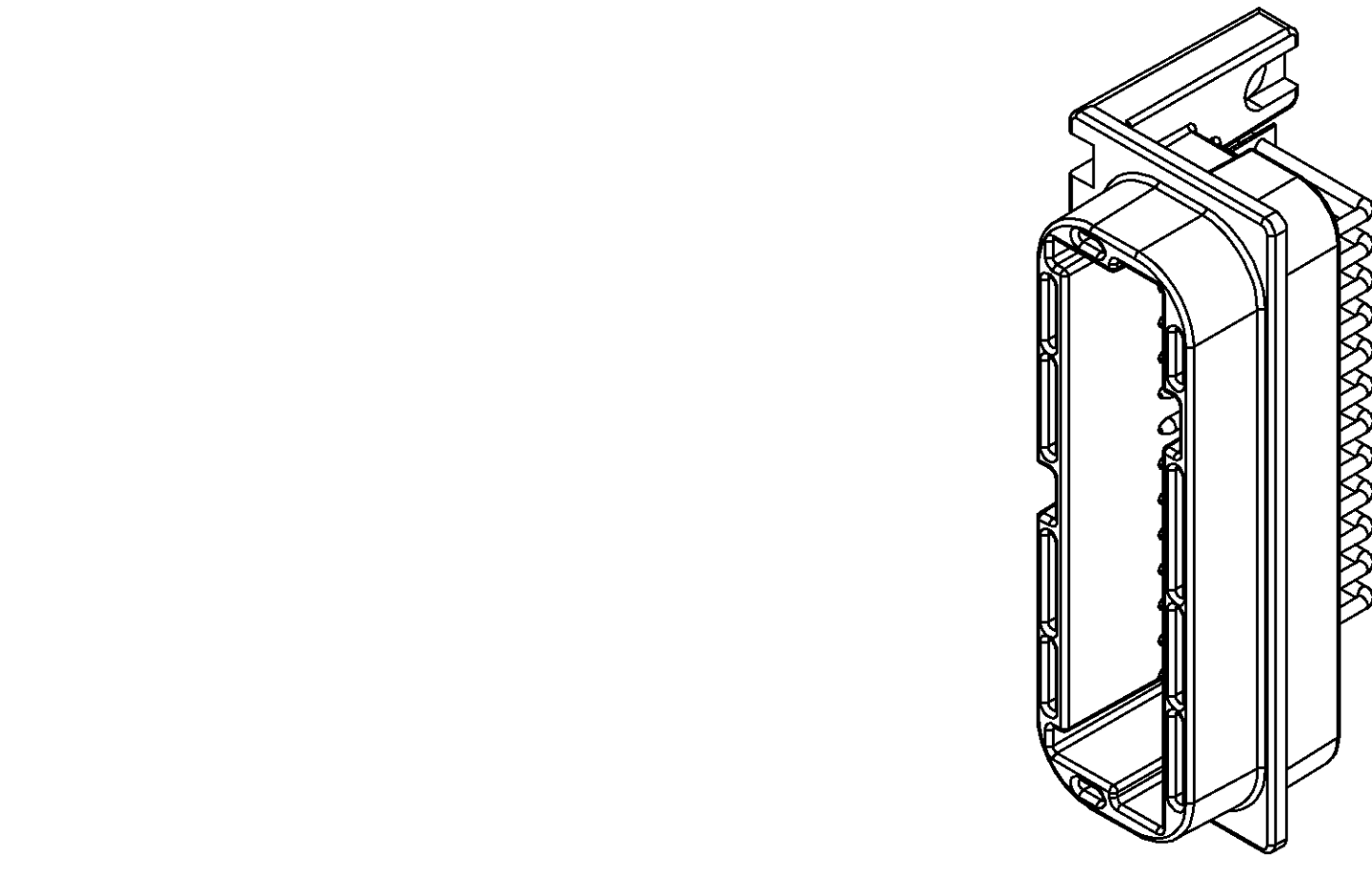
TYPE 104  
SAME AS TYPE 101 EXCEPT AS SHOWN



TYPE 105  
SAME AS TYPE 101 EXCEPT AS SHOWN



TYPE 101



- NOTES:
1. MATING FEMALE CONNECTOR & RETAINER OR EQUIVALENTS - SEE CHART.
  2. UNLESS OTHERWISE SPECIFIED AND/OR INDICATED: DIMENSIONS ARE TO FACE OF VIEW SHOWN AND AUTOMATICALLY ROUNDED BY COMPUTER FOR INSPECTION. (SEE MATH MODEL FOR PRECISE DIMENSION) FOR ALL OTHER DIMENSIONS NOT SHOWN BUT REQUIRED FOR TOOL BUILD, SEE MATH MODEL FOR PRECISE TOOL PATH DATA.
  3. PART IS MANUFACTURED TO GEOMETRIC TOLERANCES. CENTERLINE DIMENSIONS ARE FOR REFERENCE ONLY.

PART NO	REV	STATUS	TYPE	CONNECTOR	CONNECTOR RETAINER MATING (F) PARTS
12191246	A		105	12191245 - YEL	12129225 12191019
12110157	C	OBSOLETE	104	12110156 - GRA	12110152 12110153
12092320	F		101	12092313 - BLK	12129225 12129183

THE FOLLOWING APPLY UNLESS OTHERWISE SPECIFIED:

PERFECT FORM REQUIRED FOR FEATURES OF SIZE AT MMC. TRUE POSITION TOLERANCES, AND RELATED DATUMS, APPLY AT CONDITION OF SIZE INDICATED IN FEATURE CONTROL FRAME, OTHER GEOMETRIC TOLERANCES, AND RELATED DATUMS, APPLY SEPARATELY. TRUE POSITION CALLOUTS MAY BE GAGED REGARDLESS OF DATUM REFERENCE. SEE DIM STANDARDS, AND APPLICABLE DIVISIONAL STANDARDS, FOR INTERPRETATION.

GEOMETRIC DRAWING SYMBOLS

□ FLAT	∩ PROFILE OF A LINE	∥ PARALLEL
○ ROUND	⊥ PERPENDICULAR	⊙ TRUE POSITION
⊙ CYLINDRICAL	⌒ PROFILE OF A SURFACE	⌒ CIRCULAR RUNOUT
∠ ANGULAR	⊘ MAXIMUM MATERIAL CONDITION (MMC)	⊘ TOTAL RUNOUT
⊙ LEAST MATERIAL CONDITION (LMC)	⊙ REGARDLESS OF FEATURE SIZE (RFS)	⊙ DIAMETER
⊙ PROJECTED TOL. ZONE		⊙ BASIC DIMENSION

DATE	SYM	REVISION RECORD	AUTH	DR	CK
13AU96		ALL PARTS - REDRAWN & STANDARDS WITH NO PHYSICAL CHANGE			
01NO96		ALL PARTS ADDED - CIRCUIT BOARD & CAST SEALING SHROUD INFO - REVISED MATH MODEL NOTE	171680ELGJS		
17DE97		NO REV UPDATE REQ'D - DETAIL UPDATED - NO REV UPDATE REQ'D	175005AMJAG		
			184799DEHDEH		

PART NO  
1209 2436

PART NO  
1209 2436

DRAWING TYPE PID	OTHER DRAWINGS AVAILABLE DETAIL
	<b>METRIC</b> DIMENSIONS ARE IN MILLIMETERS UNLESS OTHERWISE SPECIFIED TOLERANCE UNLESS OTHERWISE SPECIFIED DECIMALS ANGLE 2° ONE PLACE ±0.3 TWO PLACE ±0.15
THIRD ANGLE PROJECTION	
CODE NO 6900	QC DES
DWG DATE 23DE92	DR T. A. WESTON 23DE92
SCALE 2:1	CK T. A. WESTON 23DE92
REFERENCE NO	APPR. V. BANDROFT 19JA93
MATERIAL SPEC	VOL. CM³
SEE DRAWING	
NAME TAXI ASM CONN 24M MIC/P 100W	
PART NUMBER 1209 2436	
SIZE A0	