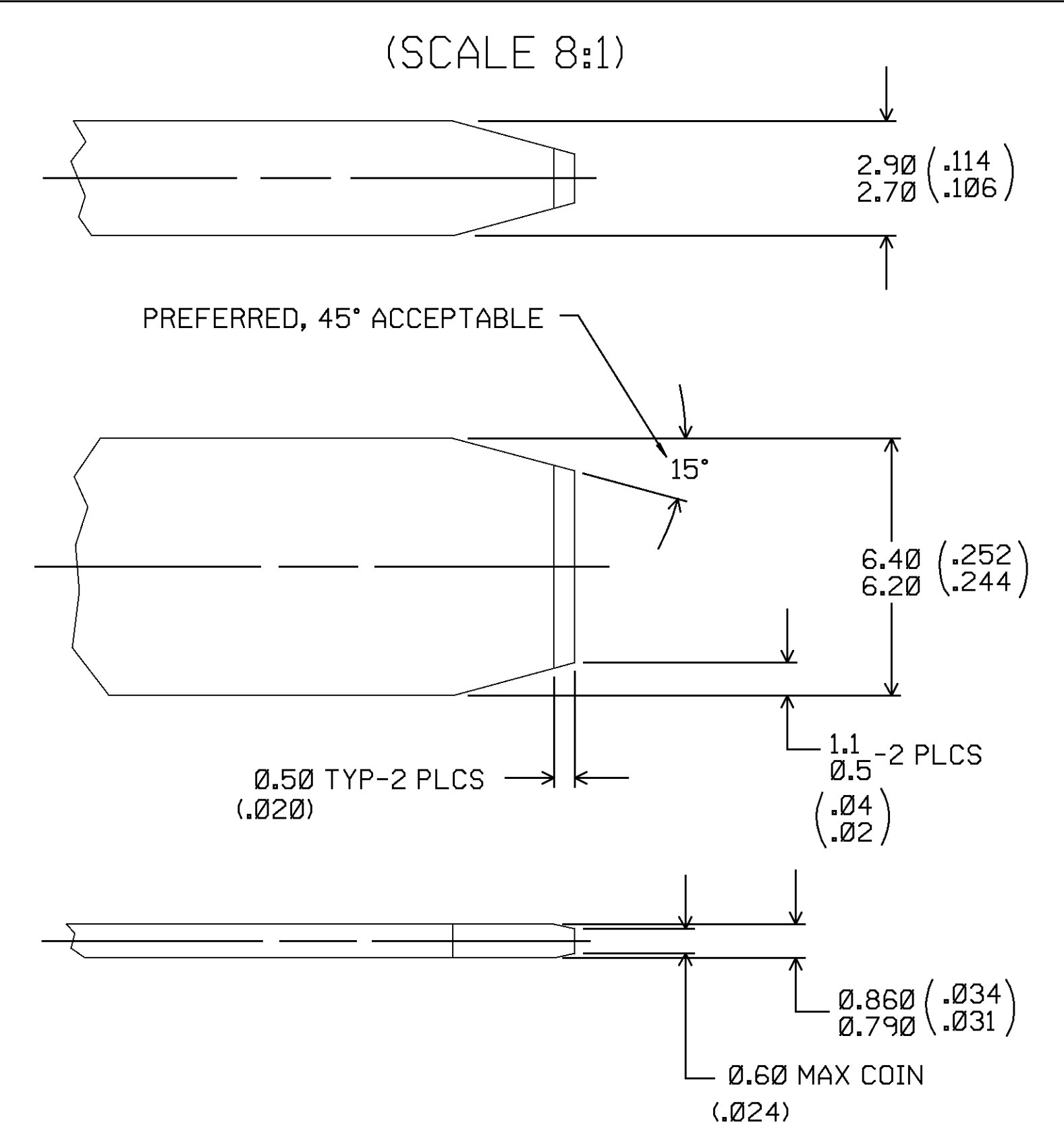


PACKARD ELECTRIC DIVISION
GENERAL WORKING DRAWING

THIS DRAWING AND DESIGN HEREON CONSTITUTE A PROPRIETARY DESIGN OF PACKARD ELECTRIC DIVISION AND IS NOT TO BE REPRODUCED OR REPRODUCED WITH-OUT AUTHORITY OF PACKARD ELECTRIC DIVISION.

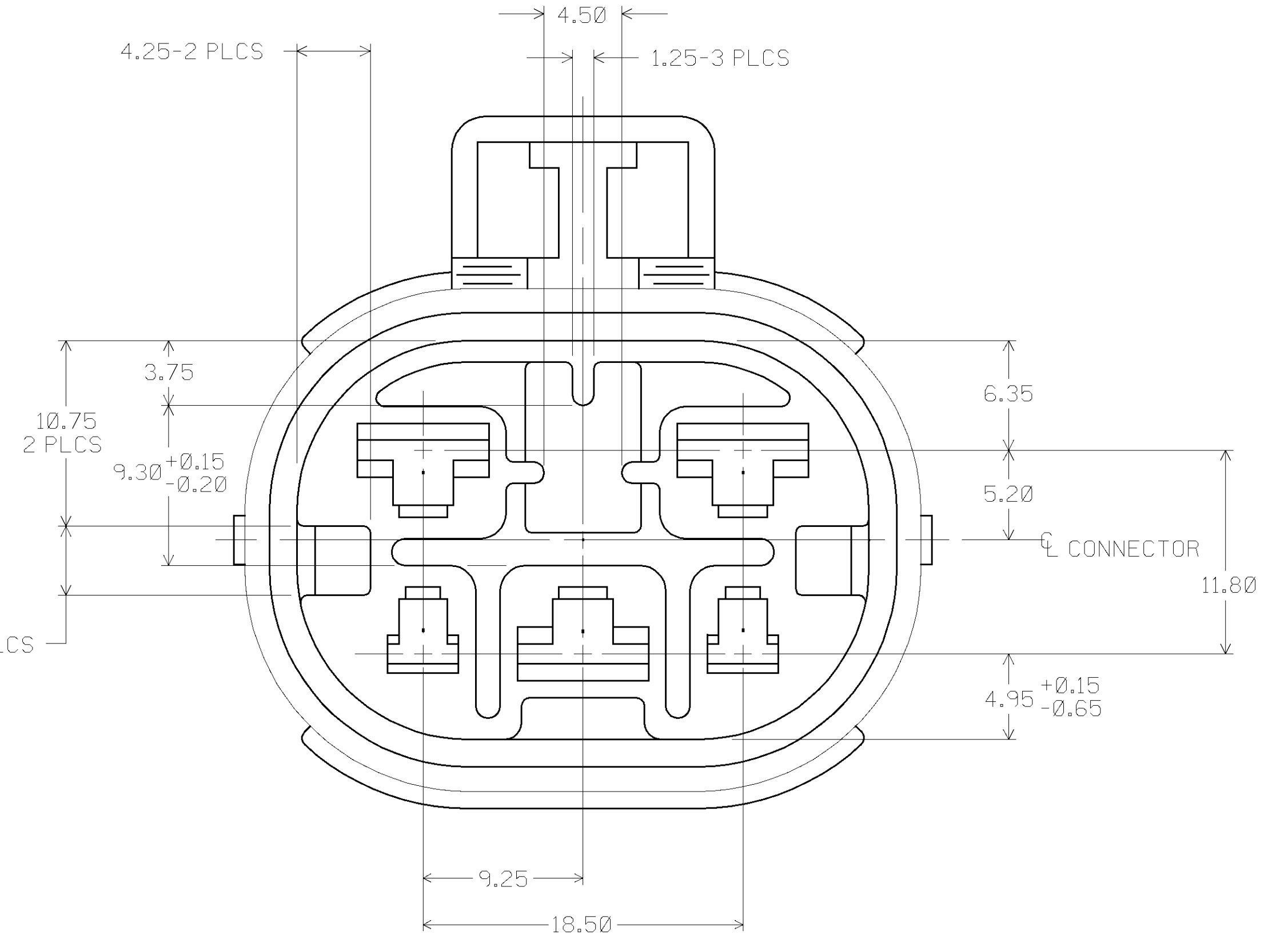
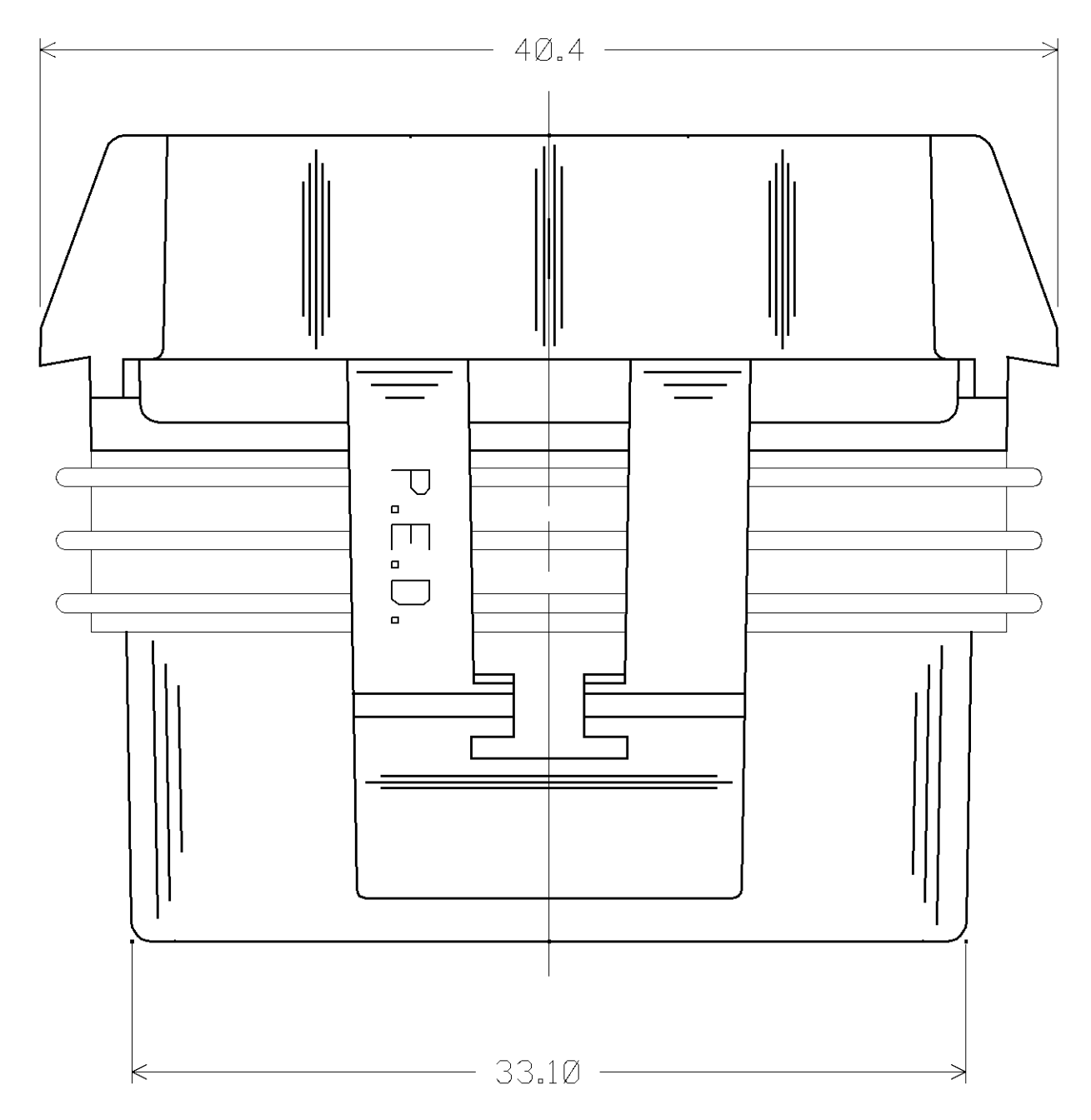
MATING TERMINAL INFORMATION



NOTE — TERMINALS ARE IDENTICAL, EXCEPT AS SHOWN.

MATERIAL — RECOMMENDED MATERIAL IS P-1546 (CA 210) - EXTRA SPRING TEMPER - TIN PLATED BRASS
PLATING THICKNESS: 0.003 - 0.005 MM (.0001 - .0002 IN.)
TENSILE STRENGTH: 430 - 480 MPa

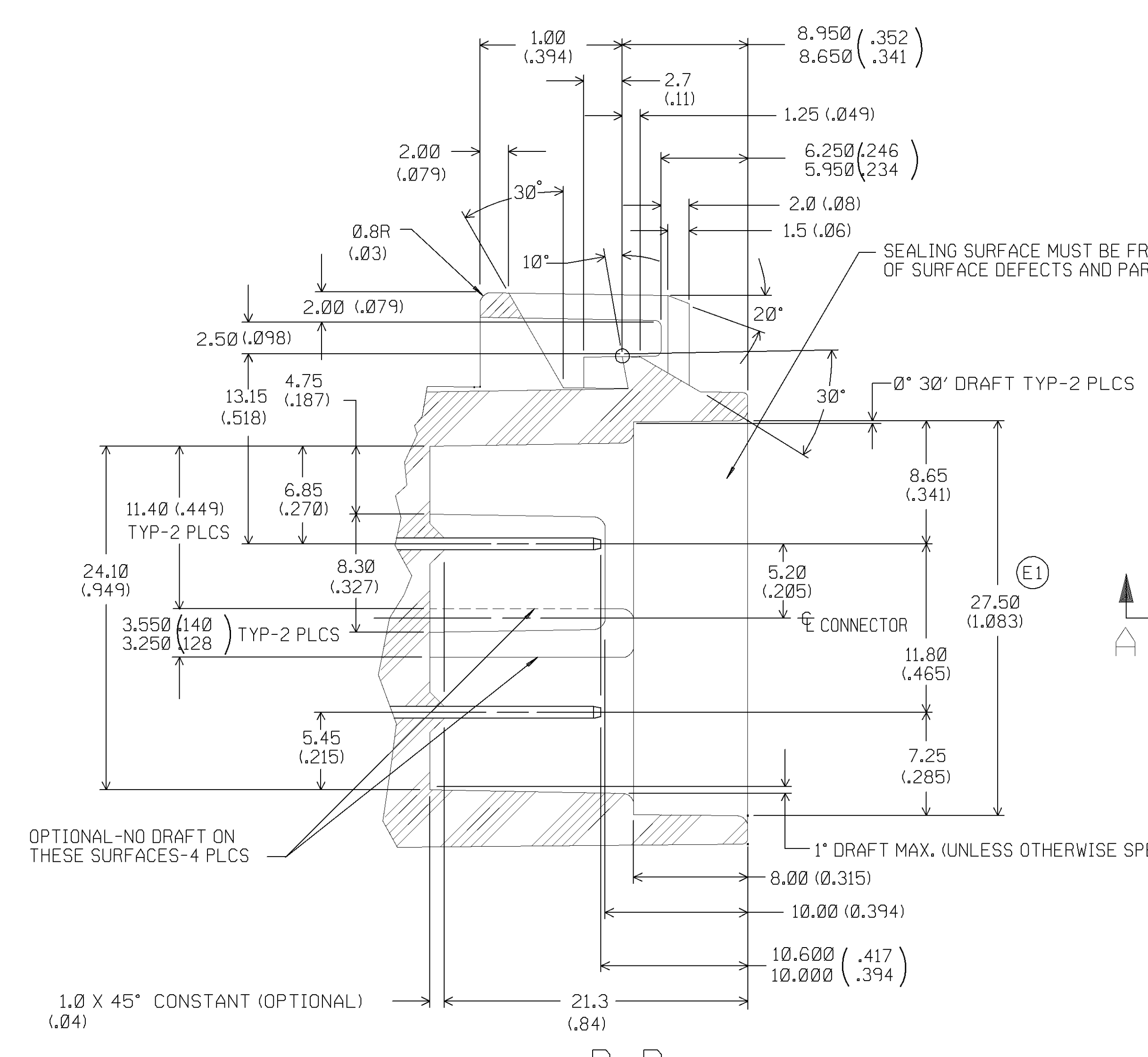
OPTIONAL MATERIAL — P1519 (CA 425) EXTRA HARD TIN BRASS - TIN PLATED
PLATING THICKNESS: 0.003 - 0.005 MM (.0001 - .0002 IN.)
TENSILE STRENGTH: 540 - 630 MPa



MATING CONNECTOR

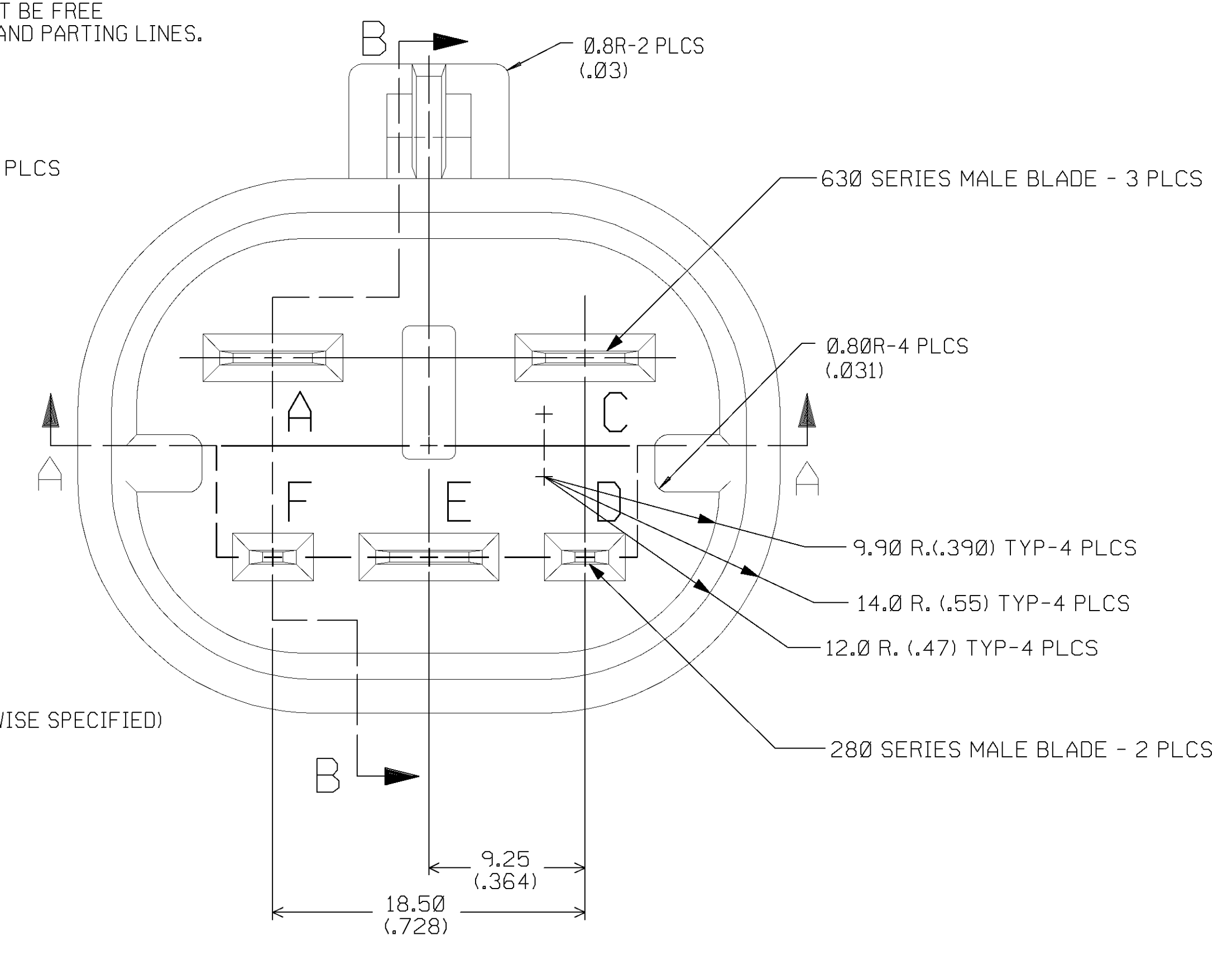
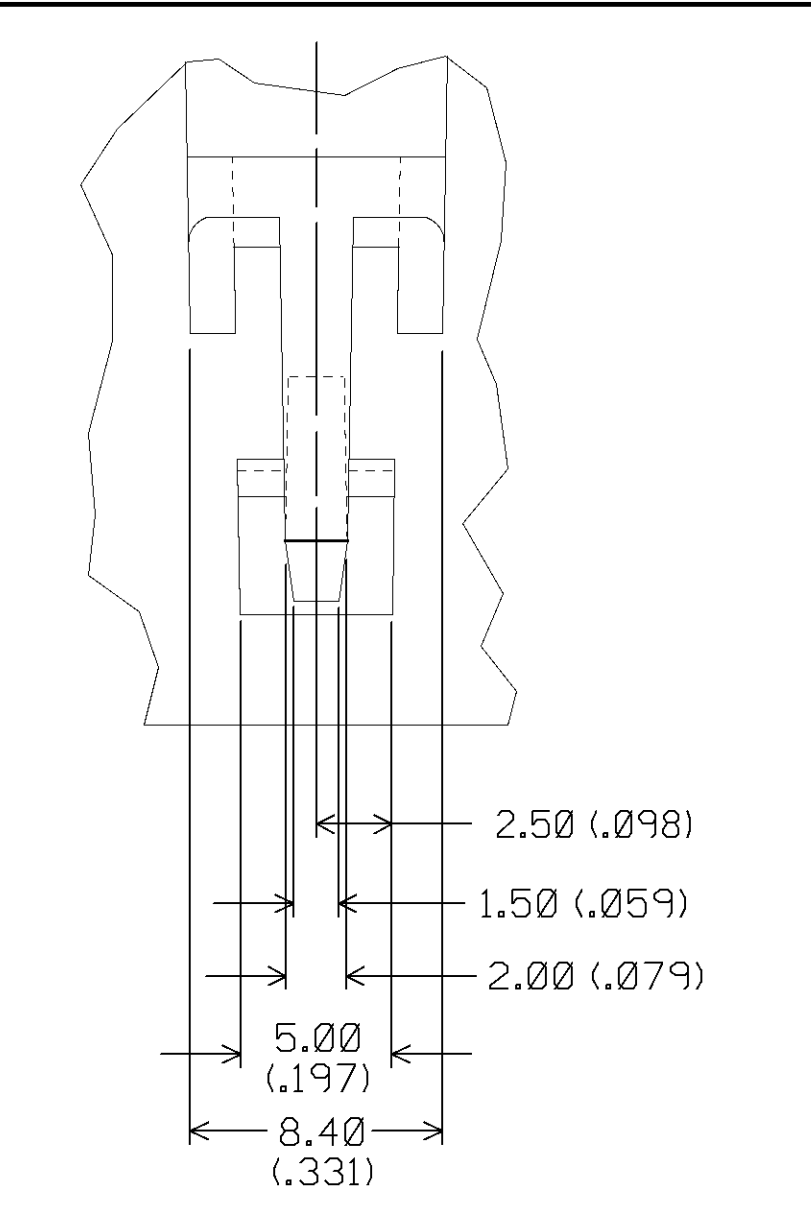
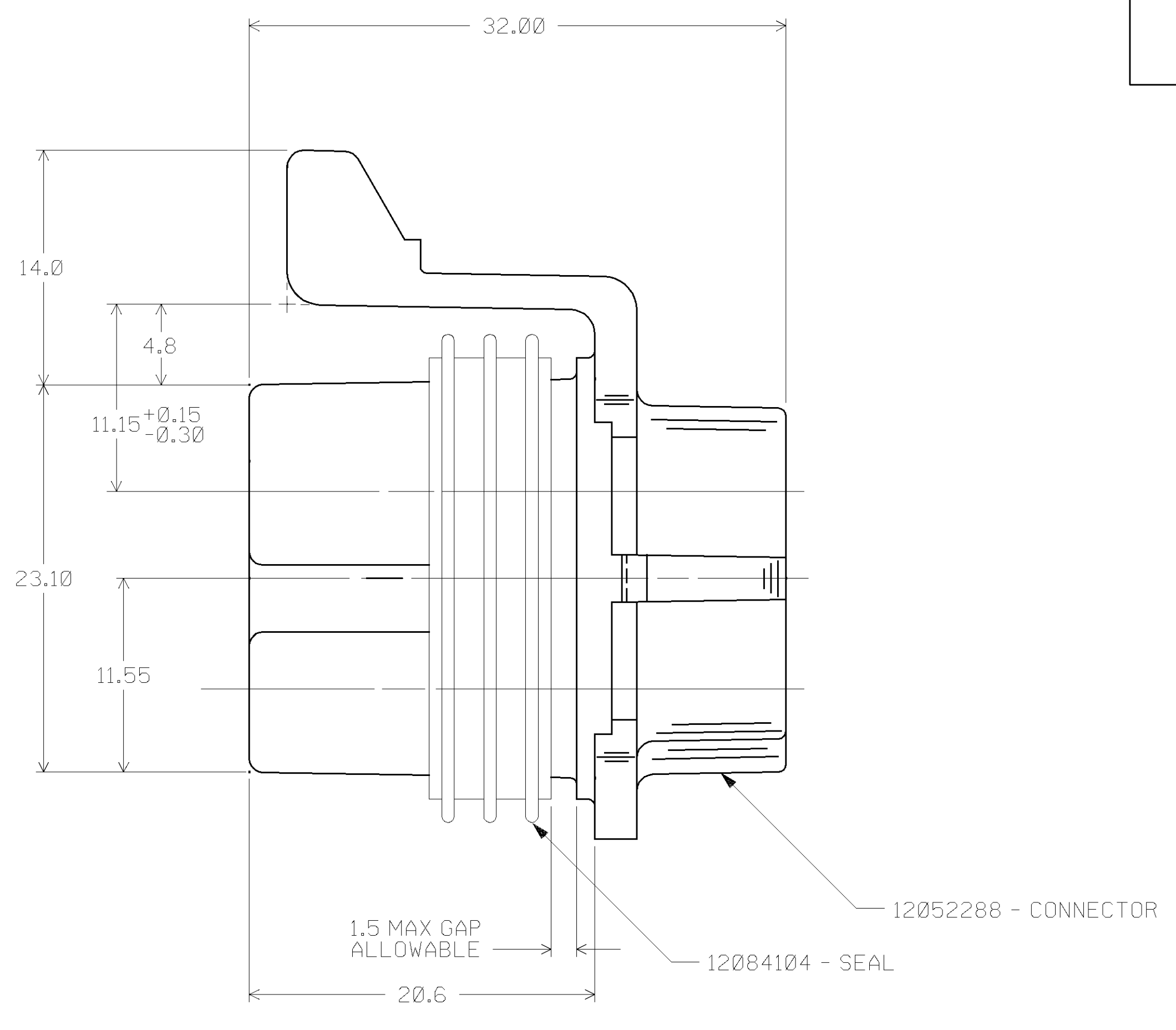
(SCALE 4:1)

RECOMMENDED MATERIAL - NYLON OR POLYESTER - 30% GLASS FILLED

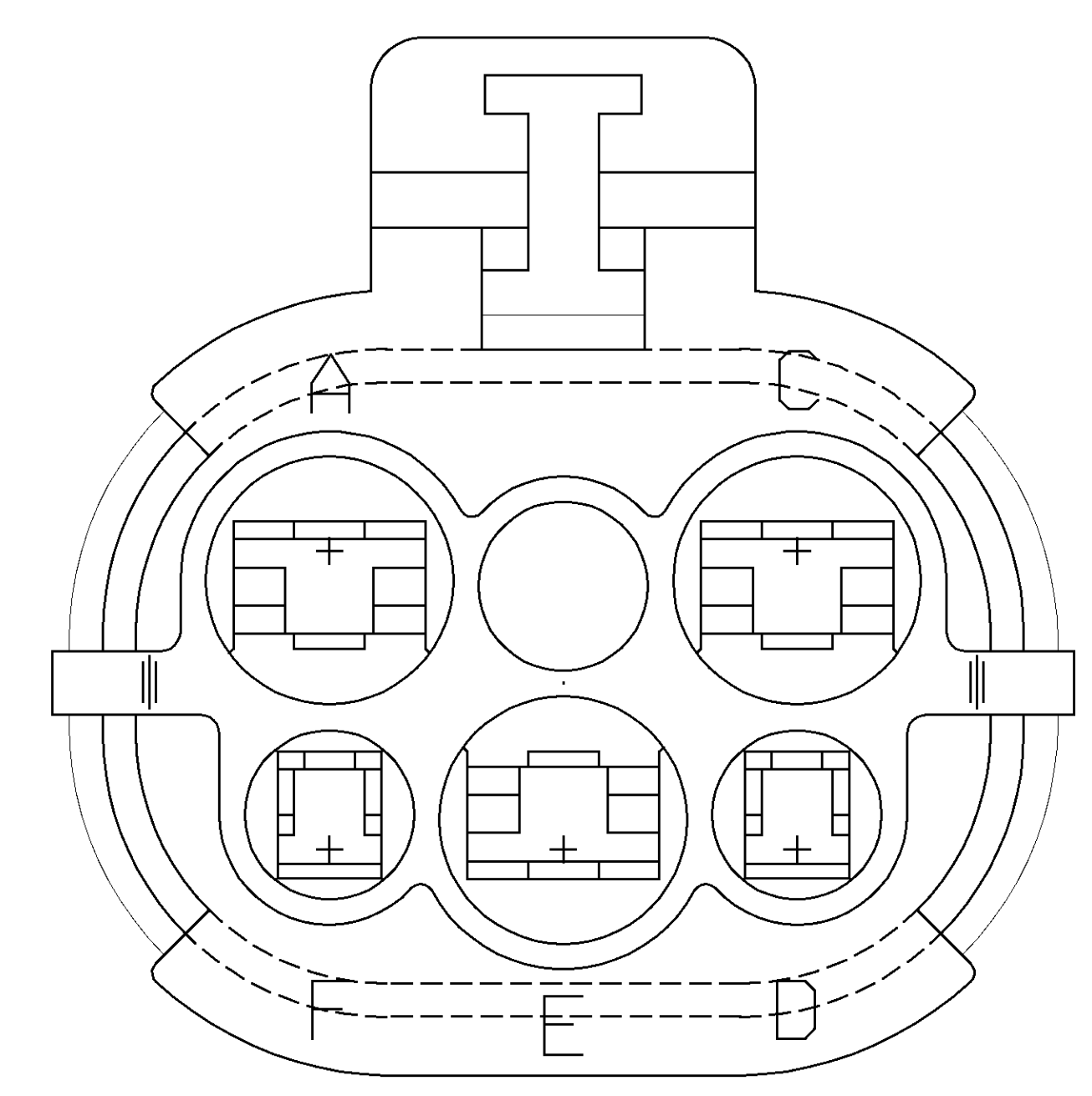
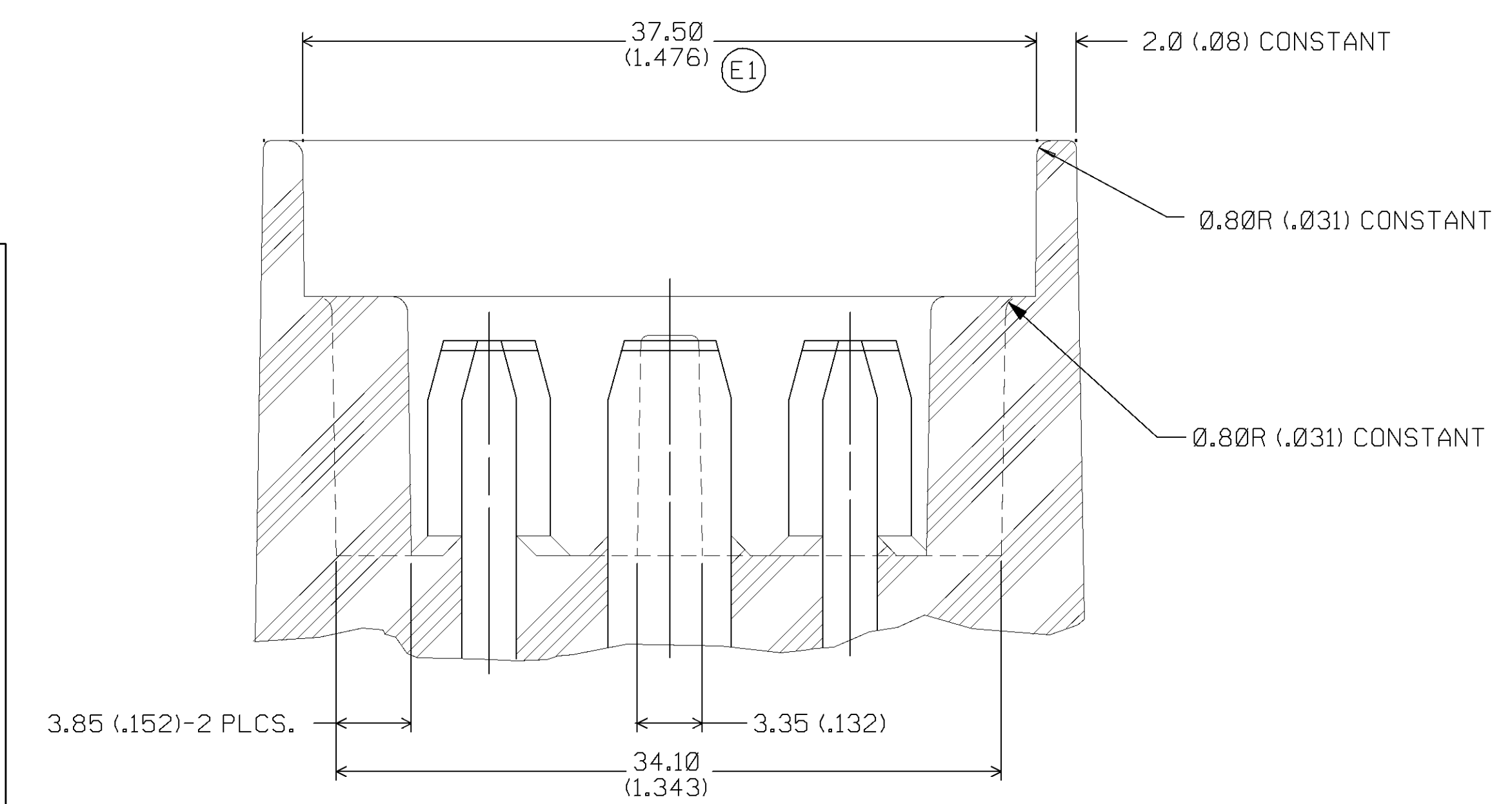


SECTION B-B

- NOTES**
1. CAVITIES A, C & E TO ACCEPT 12052455 TERMINAL OR EQUIVALENT.
 2. CAVITIES D & F TO ACCEPT 12020648 TERMINAL OR EQUIVALENT.
 3. CAVITIES A, C & E TO ACCEPT CABLE SEAL 12052387 OR EQUIVALENT.
 4. CAVITIES D & F TO ACCEPT CABLE SEAL 12010293 OR EQUIVALENT.
 5. THIS CONNECTOR TO ACCEPT T.P.A. 12052290 OR EQUIVALENT.
 6. WHEN PARTS ARE SHIPPED, THEY MUST BE PACKED IN PLASTIC BAGS OR SHIPPING CONTAINERS MUST BE LINED WITH PLASTIC LINERS. BAGS OR LINERS MUST BE SEALED TO AVOID ENTRY OF FOREIGN MATTER.
 7. THIS CONNECTOR TO ACCEPT C.P.A. 12020833 OR EQUIVALENT.
 8. SEALING CODE 3.



SECTION A-A



ZONE	DATE	SYM	REVISION RECORD	AUTHORITY	OR	CK
14JN84	A		REVISED SECONDARY LOCKS AND REPLOTTED			
19JN84	B		REVISED INDEXING & REPLOTTED			
30NO84	C		PART NO WAS EX-82494, REVISED.			
			RELEASED AND REPLOTTED	84085		FH
08MR85			ADDED GAP NOTE & NOTES 1 THRU 6	96788		FH
18NO85	D		REVISED	1202586		JET
08FE86			REVISED	104188		EM FH
15SE87			ADDED NOTE #7	115423		JP FH
29JAB8	E		SEAL WAS 12052289, MATING CONNECTOR DIMENSIONS REVISED			
			10 PLCS.; ENGLISH DIMS. ADDED			
			TO ALL MATING INFO.	118267		JR FH
14JN94	E1		REVISED DIMS - 2 PLCS	161217		GAM GAM

PART NO. 1205 2287

PART NO. 1205 2287

PATENT PENDING

ENGLISH DIMENSIONS ARE IN ()

FILE SPEC: ***** THIRD ANGLE PROJECTION	CONSPECIFICATION ***** *****TIM*****
METRIC DIMENSIONS ARE IN MILLIMETERS	
CODE NO: 6900	TOLERANCE UNLESS OTHERWISE SPECIFIED DECIMALS: ONE PLACE ± 0.3 (0.01) THREE PLACE ± 0.075 (0.003)
DWG. DATE: 01JN84	SCALE: NONE
DR: [Signature]	DR: [Signature]
EST. NO.:	CK: F. HESTON DATE: 14MR85
REFERENCE NO. 12052288 'E' SIZE	APPR: M.E. CONWAY DATE: 15MR85
	APPR: J.M. CHUPAK DATE: 15MR85
MATERIAL SPEC. SEE DRAWING	
NAME ASM CONN 5F M/P MXD	
PART NO. 1205 2287	SIZE E