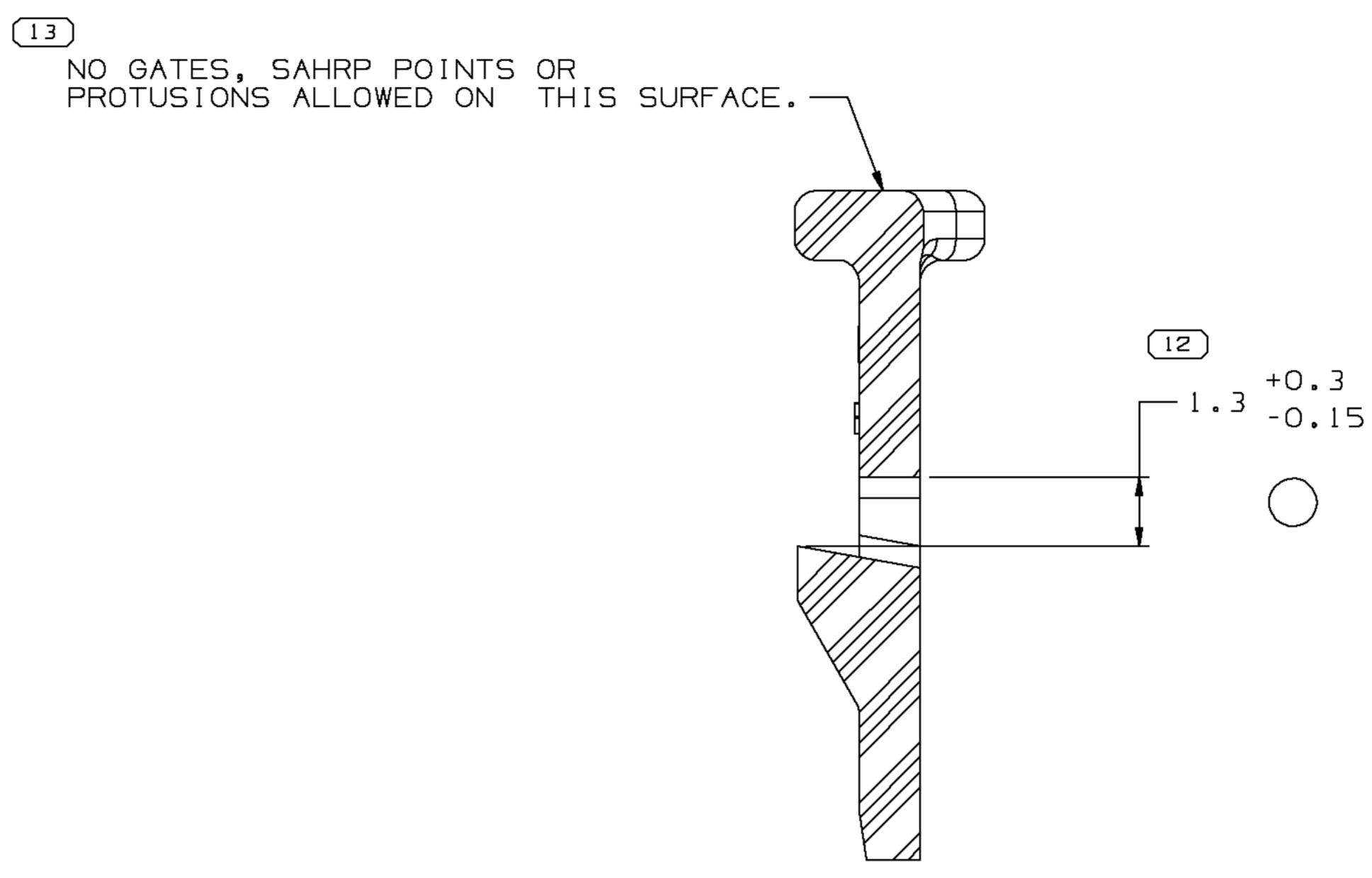
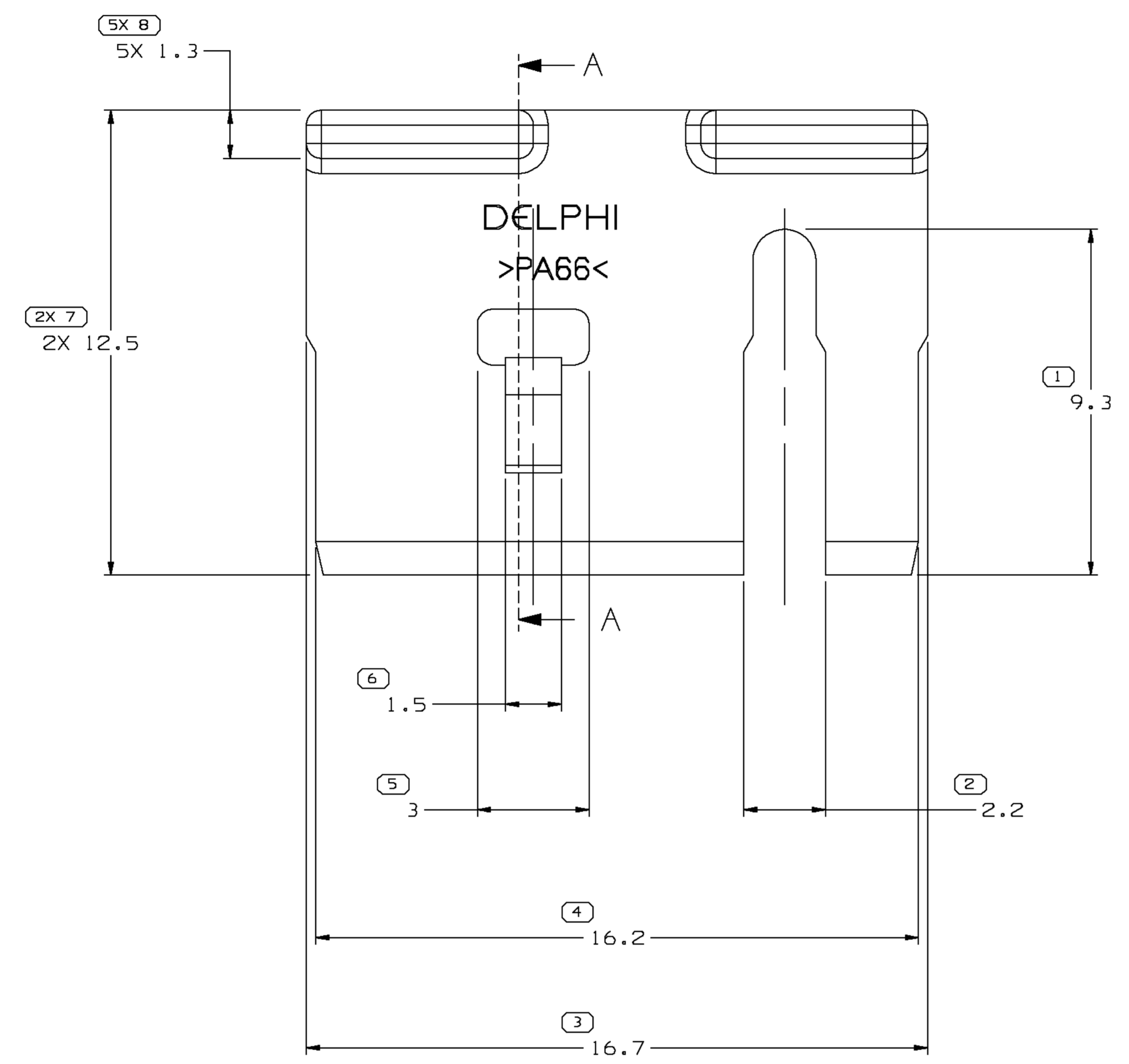
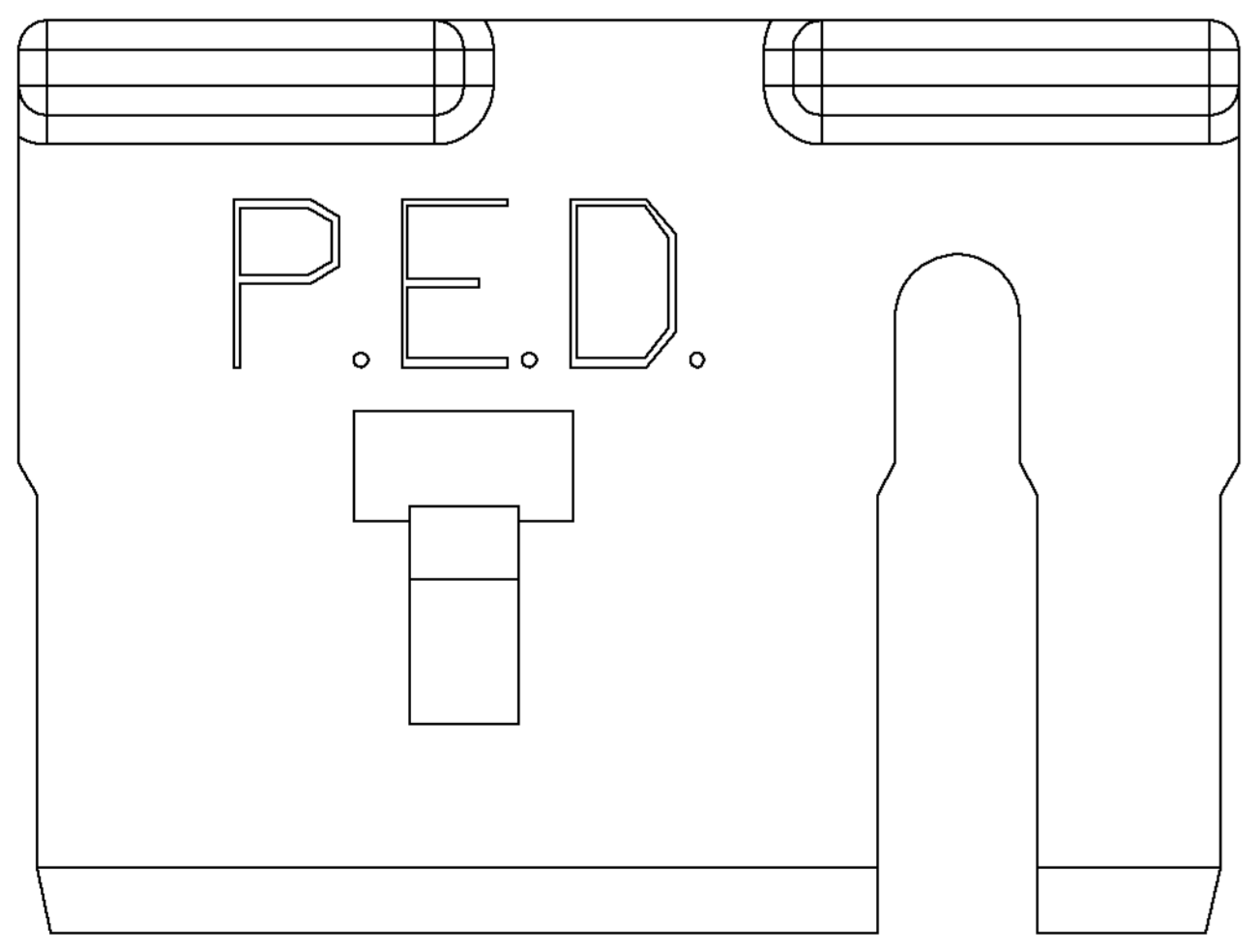
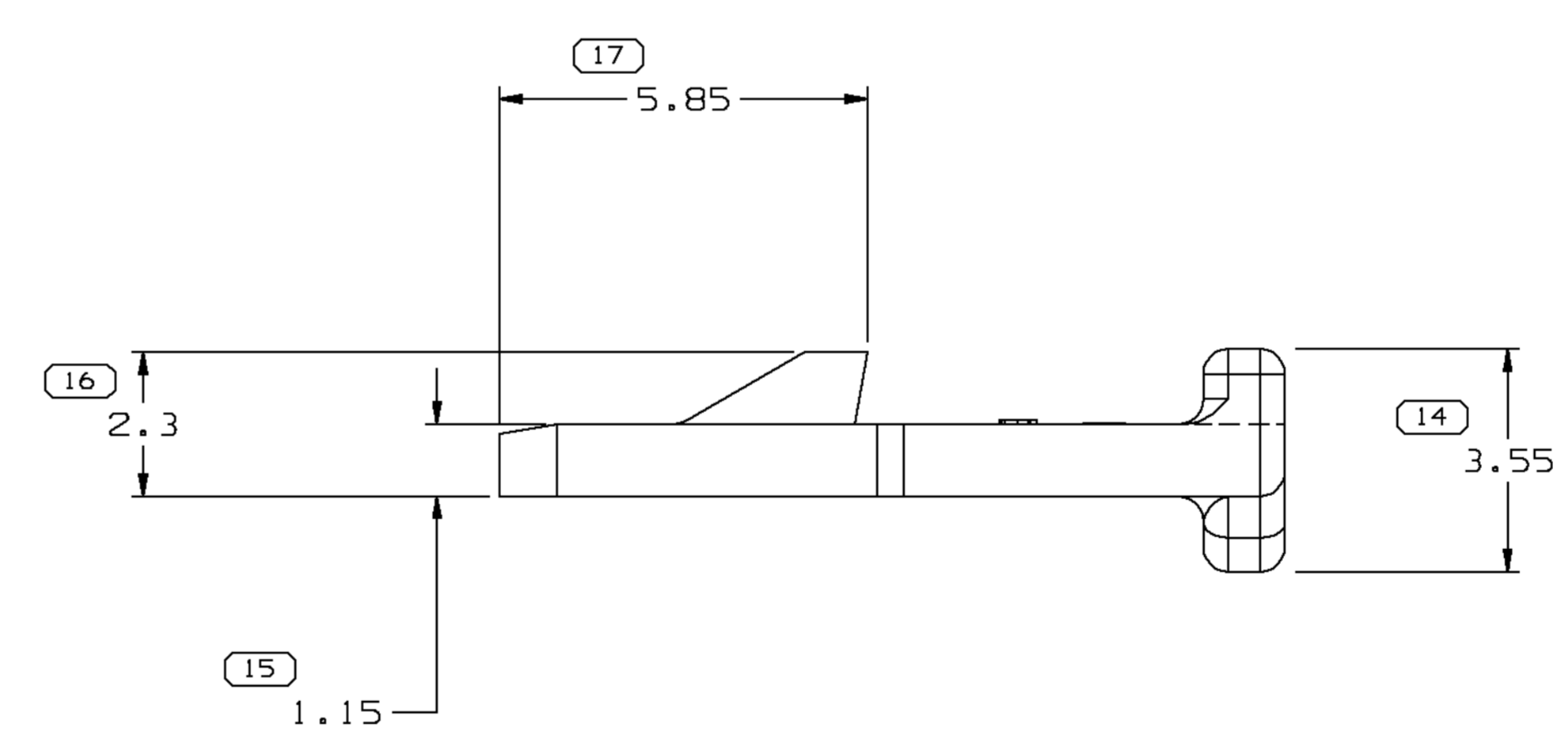
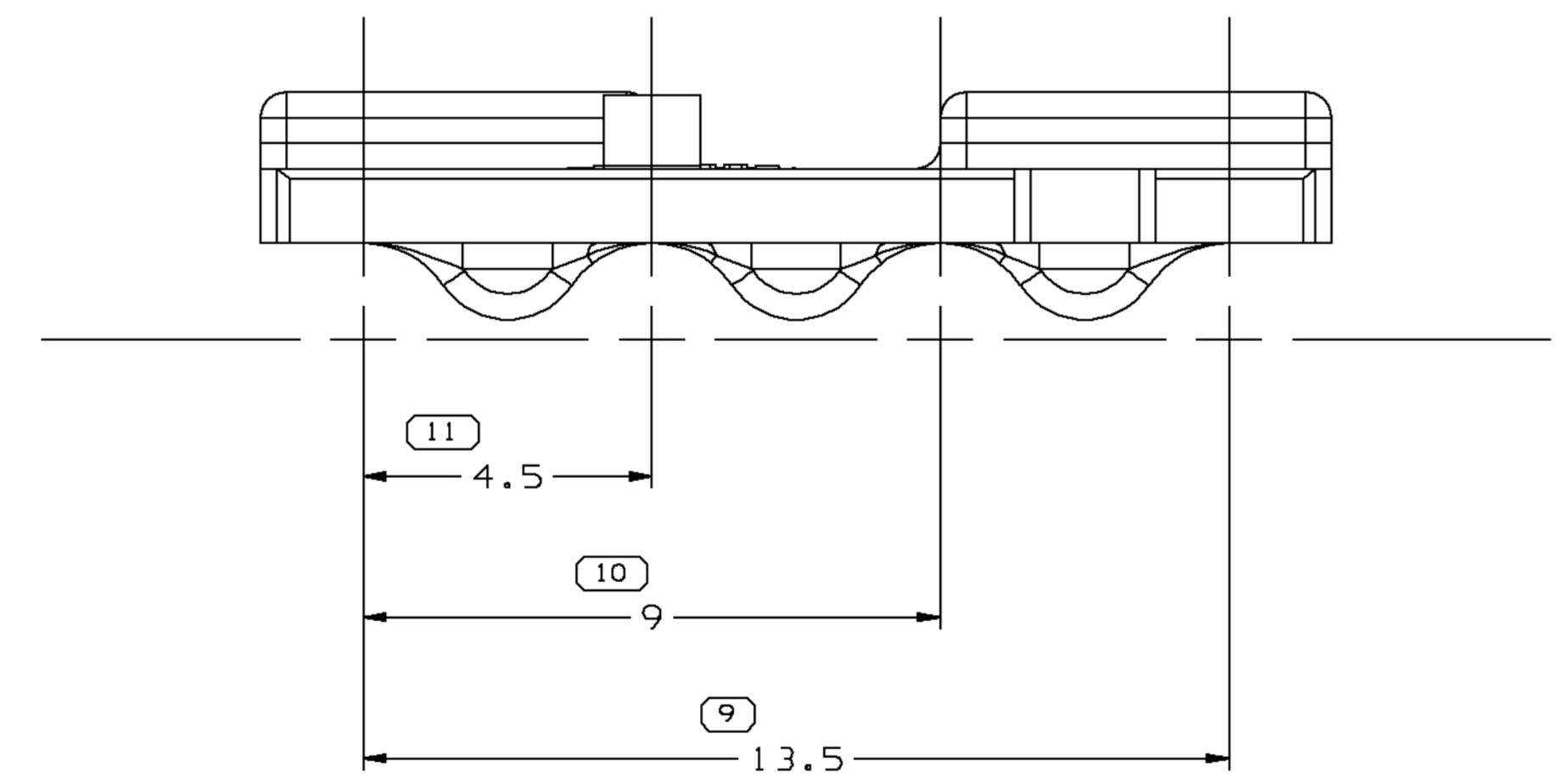


SYMBOL DEFINITION		TOTAL NO OF INSPECTIONS REQUIRED	MISSING SYMBOLS
A DIMENSION WITHOUT AN INSPECTION REPORT SYMBOL DOES NOT REQUIRE INSPECTION. IT MAY BE CONTROLLED ON THE INDIVIDUAL COMPONENT DRAWING.		22	NO MISSING SYMBOL NUMBER
	LAST NO. USED	17	

DWG STATUS						REVISION HISTORY			AUTH	DR	APVD	APVD
DATE	STG	REV	W/P	CHG	ZONE							
19JUN01	R	E3	-	-		REDRAWN TO PD		206410	JYD	EOV	GMC	
19JUN01	R	O6	-	-		REVISED MAT'L SPEC		207231	JYD	EOV	GMC	
25NOV02	R	O6	AA	-		1.3 +0.3/-0.15 WAS 1.3 ±0.15		233849	RH	RH	ET	



SECTION A - A



OPTIONAL CONSTRUCTION

NOTES

- UNLESS OTHERWISE SPECIFIED AND/OR INDICATED, DIMENSIONS ARE TO FACE OF VIEW SHOWN AND AUTOMATICALLY ROUNDED BY COMPUTER FOR INSPECTION (SEE MATH MODEL FOR PRECISE DIMENSIONS). FOR ALL OTHER DIMENSIONS NOT SHOWN BUT REQUIRED FOR TOOL BUILD, SEE MATH MODEL FOR PRECISE TOOL PATH DATA. ALL RADII 0.4. DRAFT IS 1:0. MAX ON ALL OUTSIDE SURFACES.
- TOOL CAVITY IDENTIFICATION SHOULD BE LOCATED AS CLOSE TO THE GATE AS POSSIBLE.
- MATERIAL RECYCLING CODE >PA66< PER SAE J1344. (1)(X)(0.1) RAISED CHARACTERS AS SHOWN TO BE LOCATED ON ANY EXTERIOR SURFACE. OPTIONAL CONSTRUCTION TO BE NO MATERIAL RECYCLING CODE.
- THIS PART IS NOT CONTROLLED FOR AUTOMATIC FEEDING.
- MATING COMPONENTS OR EQUIVALENT:
CONNECTOR 12092162 & 12092163
- (1)(X)(0.1) RAISED DELPHI CORPORATE BRAND TO BE LOCATED ON ANY EXTERIOR SURFACE, PREFERABLY VISIBLE AT FINAL ASSEMBLY. OPTIONAL CONSTRUCTION TO BE "PED" OR NO LOGO.



DWO TYPE		PART DRAWING	
STYLE		DISTR CODE	D
VOLUME (COP)	0,239		
ROUTING	6900,6901		
UNLESS OTHERWISE SPECIFIED			
THIS DOCUMENT IS IN ACCORDANCE WITH ASME Y14.5M-1994 AS AMENDED BY Y14.5M-2009 DIMENSIONING AND TOLERANCING ADDENDUM - 1997. ALL GEOMETRIC TOLERANCES AND RELATED DATUMS APPLY TO ALL DIMENSIONS UNLESS OTHERWISE SPECIFIED.			
MFCI DOES NOT APPLY WHEN RELATIONSHIP BETWEEN FEATURES IS ESTABLISHED BY ORIENTATION OR LOCATION TOLERANCES. SEPARATE POSITION CALLOUTS MAY BE BASED SEPARATELY, REGARDLESS OF DATUM REFERENCE.			
ALL DIMENSIONS ARE IN MILLIMETERS			

DELPHI
DELPHI PACKARD ELECTRIC SYSTEMS
WARREN, OH

DR	DATE
APVD1 J. YEE	19JUN01
APVD2 E. VAZQUEZ	20JUN01
APVD3 G. MACIAS	21JUN01
APVD4	
APVD5	

MATERIAL: M3592008 PA66 HS 1M BLU
CONTENT PER DELPHI 10949001

DRAWING NAME: TPA M/P 150
DRAWING NUMBER: 12092164

SIZE	SCALE	FRAME NO	SHEET NO	STG	REV	W/P
A0	10:1	1	1	1	1	06 AA

PROCESS SENSITIVE DIMENSION		REFERENCE	
DIMENSIONS ENCLOSED IN () INDICATE RETIRED, DURING CHG AND NO TOLERANCE LIMITS ARE ESTABLISHED		THIRD ANGLE PROJECTION	
R 0.1 MAX		DO NOT SCALE	
R 0.2 MAX		USE MATH DATA	
SHARP CORNER TOLERANCE		UNIGRAPHICS	

FROM	TO	DIMENSIONAL RANGE (MM)	TOLERANCE UNLESS OTHERWISE SPECIFIED	CHART	ET
0	20	> 0	±0.15	1	1
20	30	> 20	±0.2	1	1
30	70	> 30	±0.3	1	1
70	100	> 70	±0.4	1	1
100	150	> 100	±0.5	1	1
150	200	> 150	±0.6	1	1
200	250	> 200	±0.8	1	1
250	300	> 250	±1	1	1
300	400	> 300	±1.2	1	1