

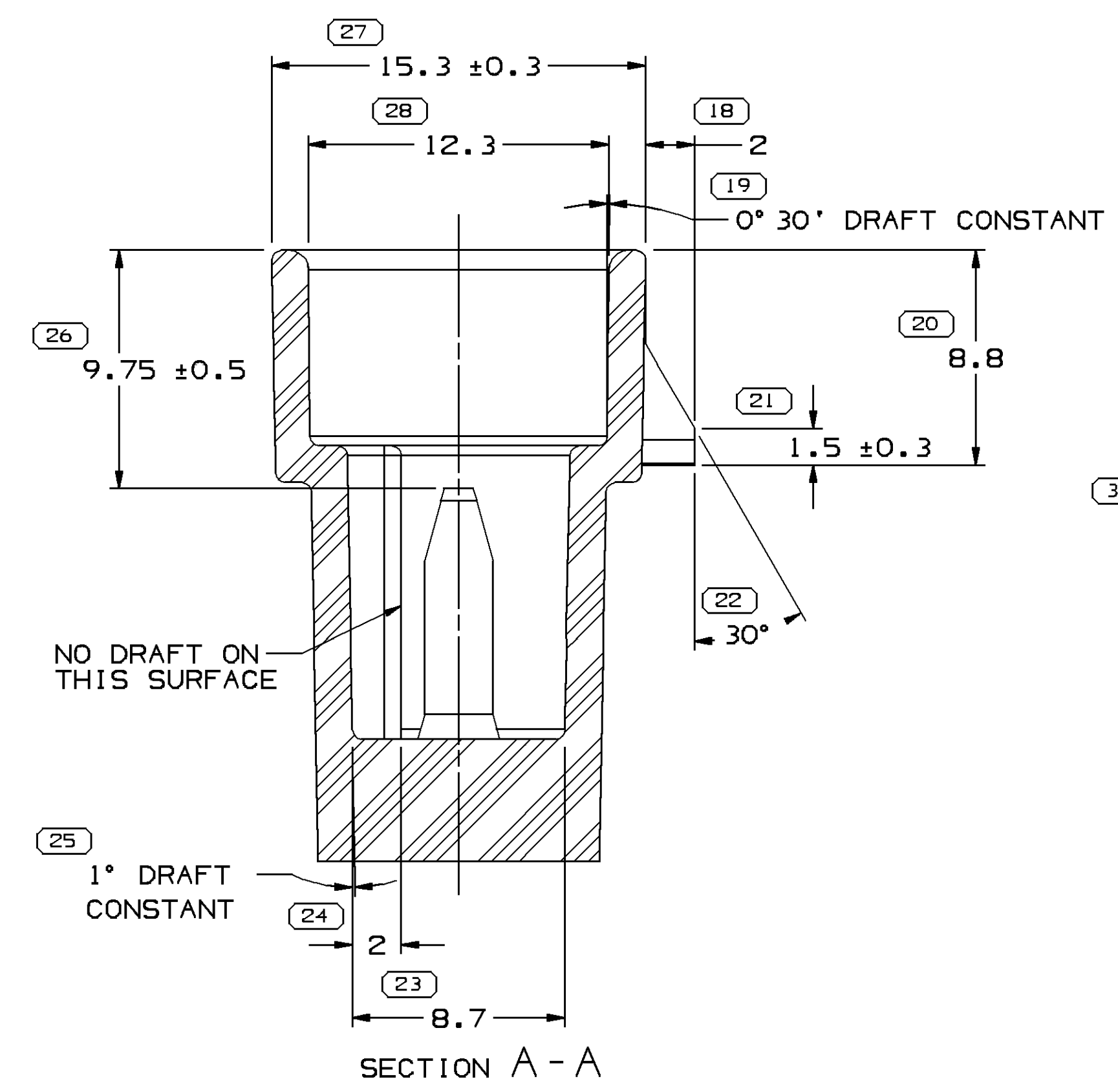
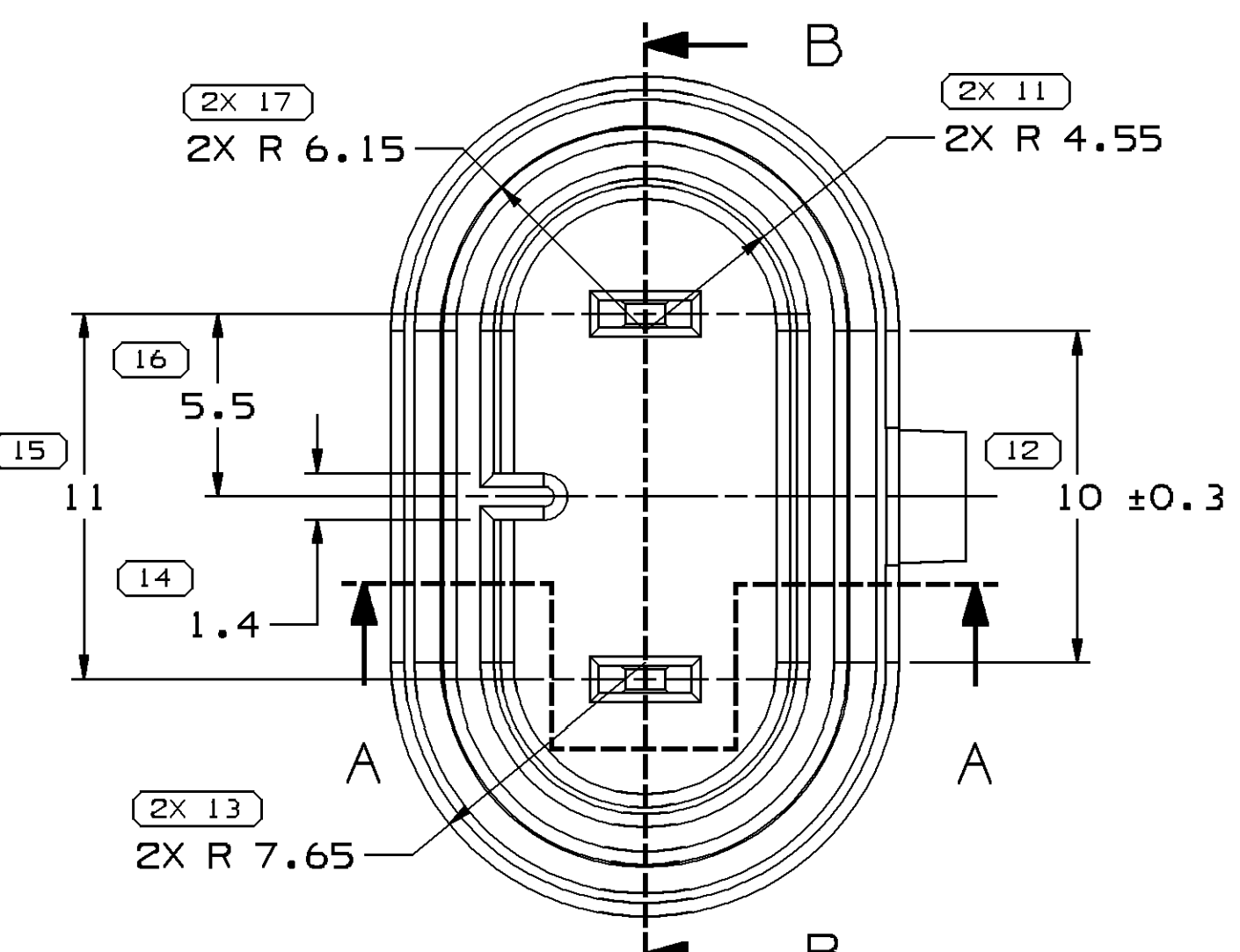
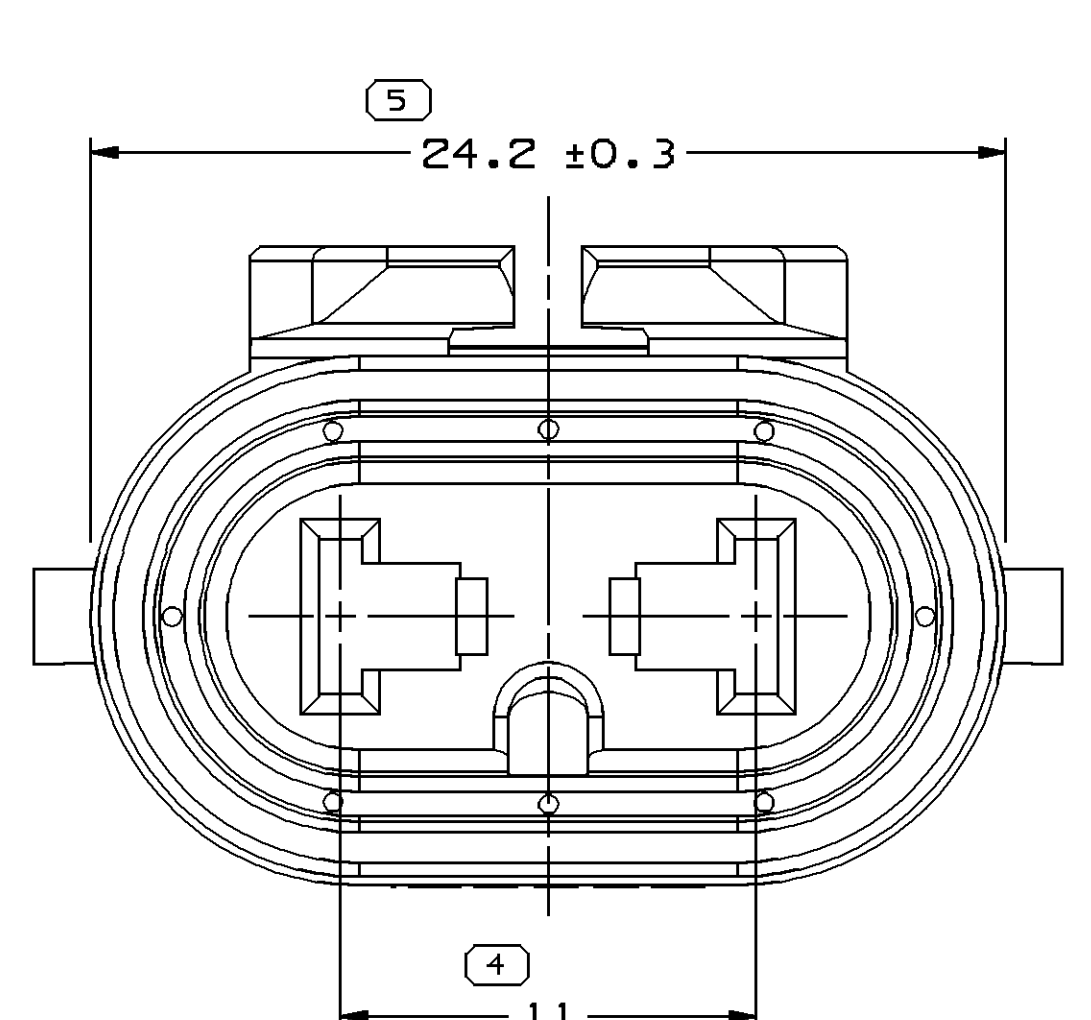
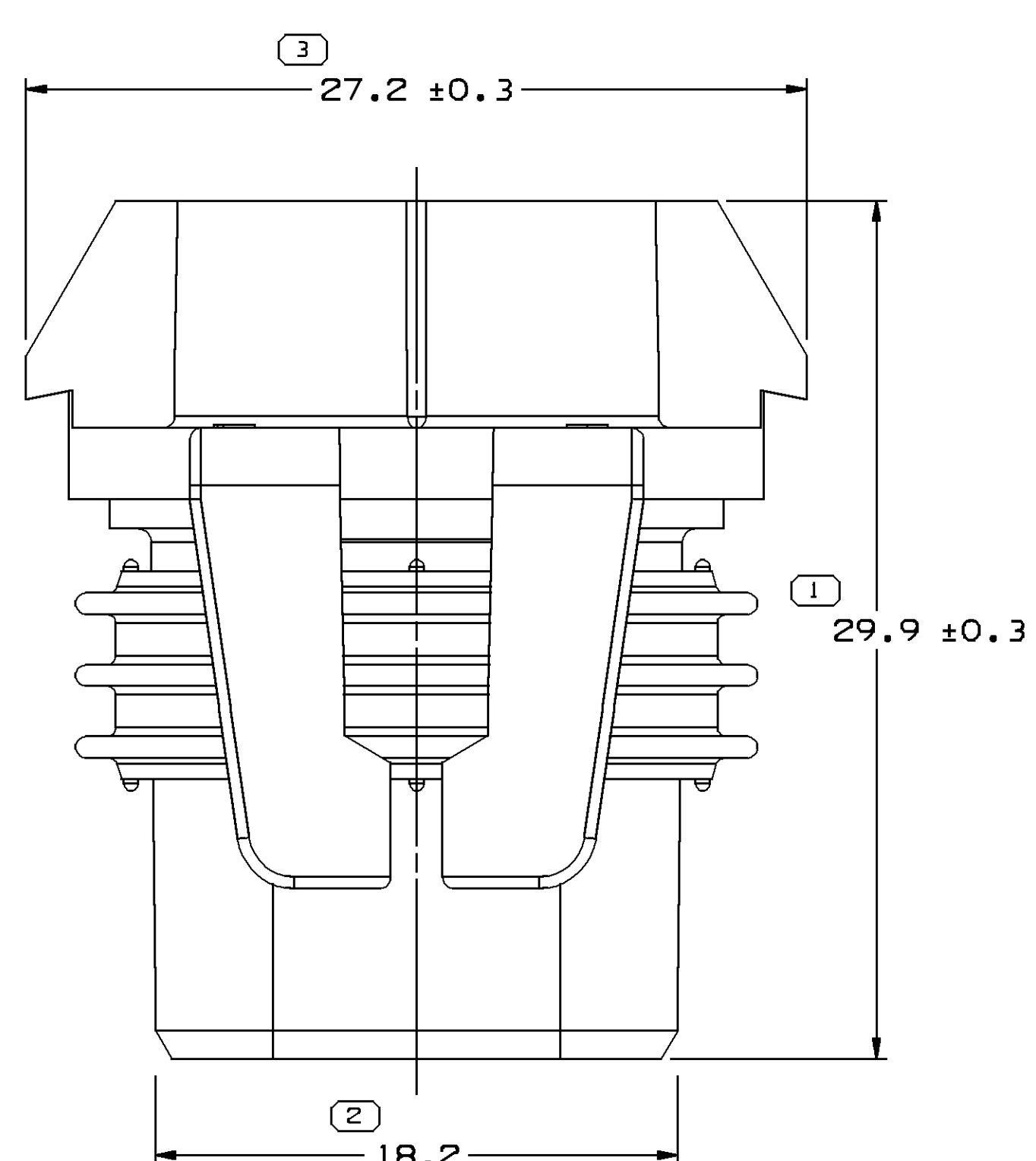
● THESE DIMENSIONS ARE CRITICAL TO THE MECHANICAL AND ELECTRICAL PERFORMANCE OF THE CONNECTION SYSTEM.

### MATERIAL SPECIFICATIONS

**RECOMMENDED**  
 BASE METAL - CDA-210, EXTRA SPRING TEMPER  
 • TIN PLATING (WHERE APPLICABLE TO 125°C MAX CONTINUOUS USAGE): 0.0050±0.0025 MM (200±100 μIN) ELECTROPLATED TIN.  
 • USAGE OF PLATING TYPES OTHER THAN RECOMMENDED MUST BE APPROVED BY DELPHI PACKARD ELECTRIC SYSTEMS ENGINEERING.

**MINIMUMS**  
 ELECTRICAL CONDUCTIVITY - ≥ 28% IACS AT 20°C. USE OF A MATERIAL WITH CONDUCTIVITY < 28% IACS MUST BE APPROVED BY PACKARD ELECTRIC MATERIALS ENGINEERING.  
 TENSILE STRENGTH - 420 - 475 MPa  
 UNDERPLATING FOR TIN PLATING - FOR BASE MATERIALS CONTAINING 10% OR MORE ZINC, AN UNDERPLATE OF COPPER 0.0025 MM (100 μIN) MINIMUM THICK IS REQUIRED.  
 PROCESSING LUBRICANT - ANY PROCESSING LUBRICANT REMAINING ON TERMINALS MUST NOT VARNISH OR DEGRADE THE ELECTRICAL PERFORMANCE OF THE CONNECTION UP TO A MAXIMUM TEMPERATURE OF 150°C. PROCESSING LUBRICANTS MUST BE APPROVED BY DELPHI PACKARD ELECTRIC SYSTEMS ENGINEERING.

### MATING BLADE INFORMATION

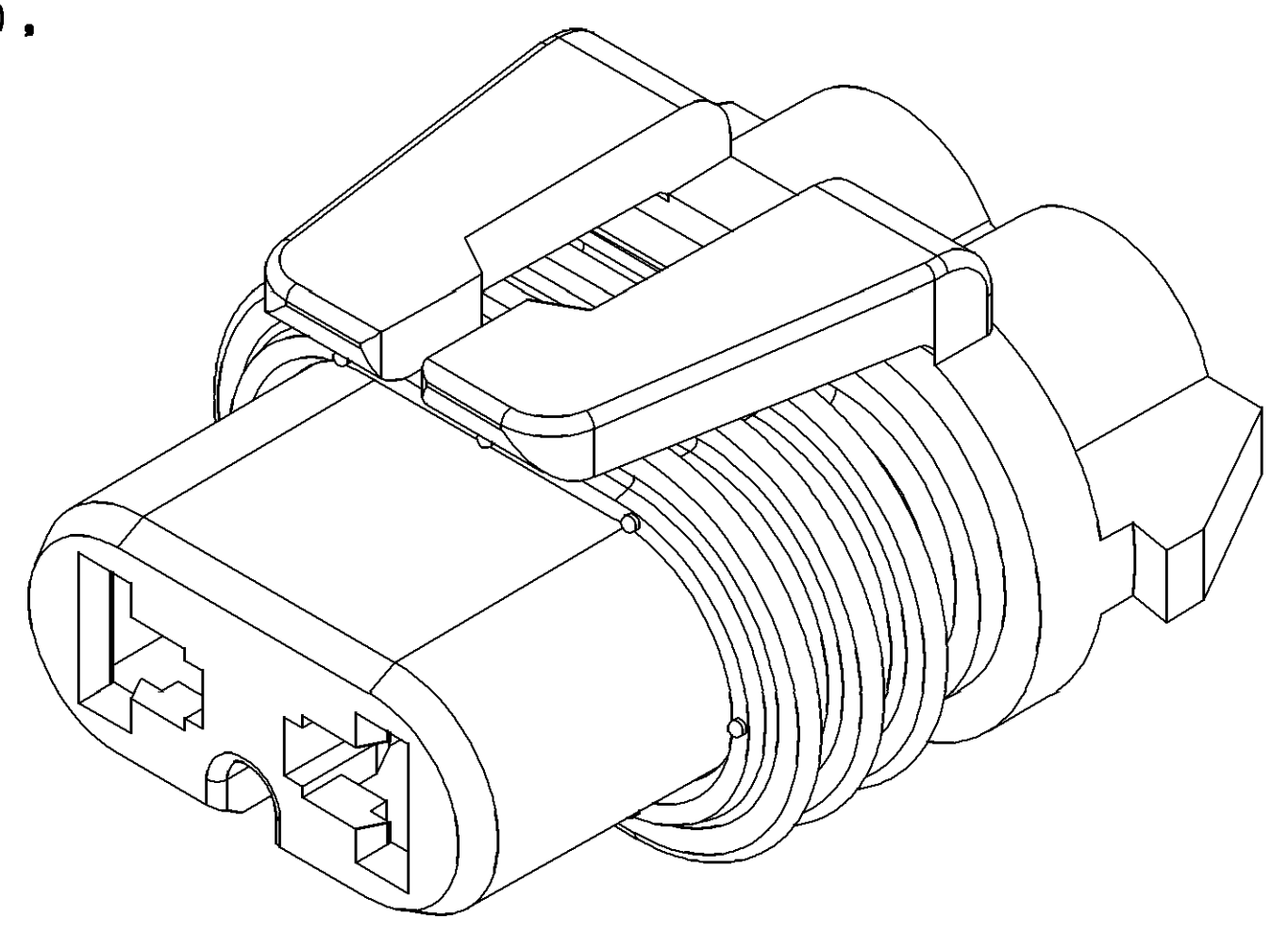
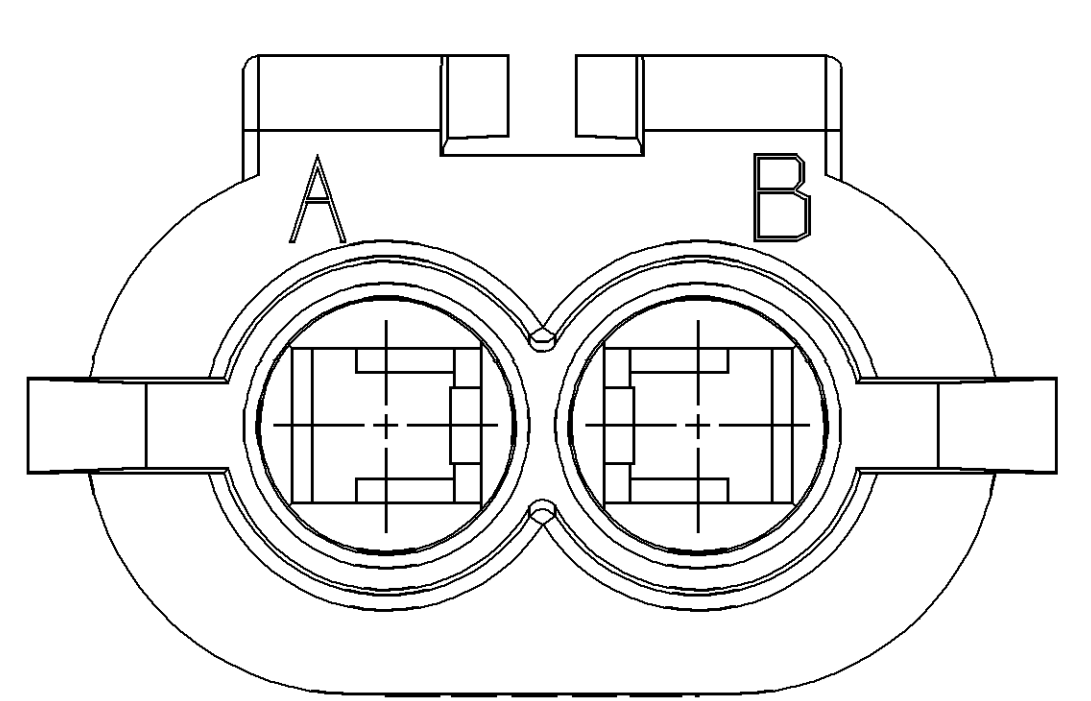
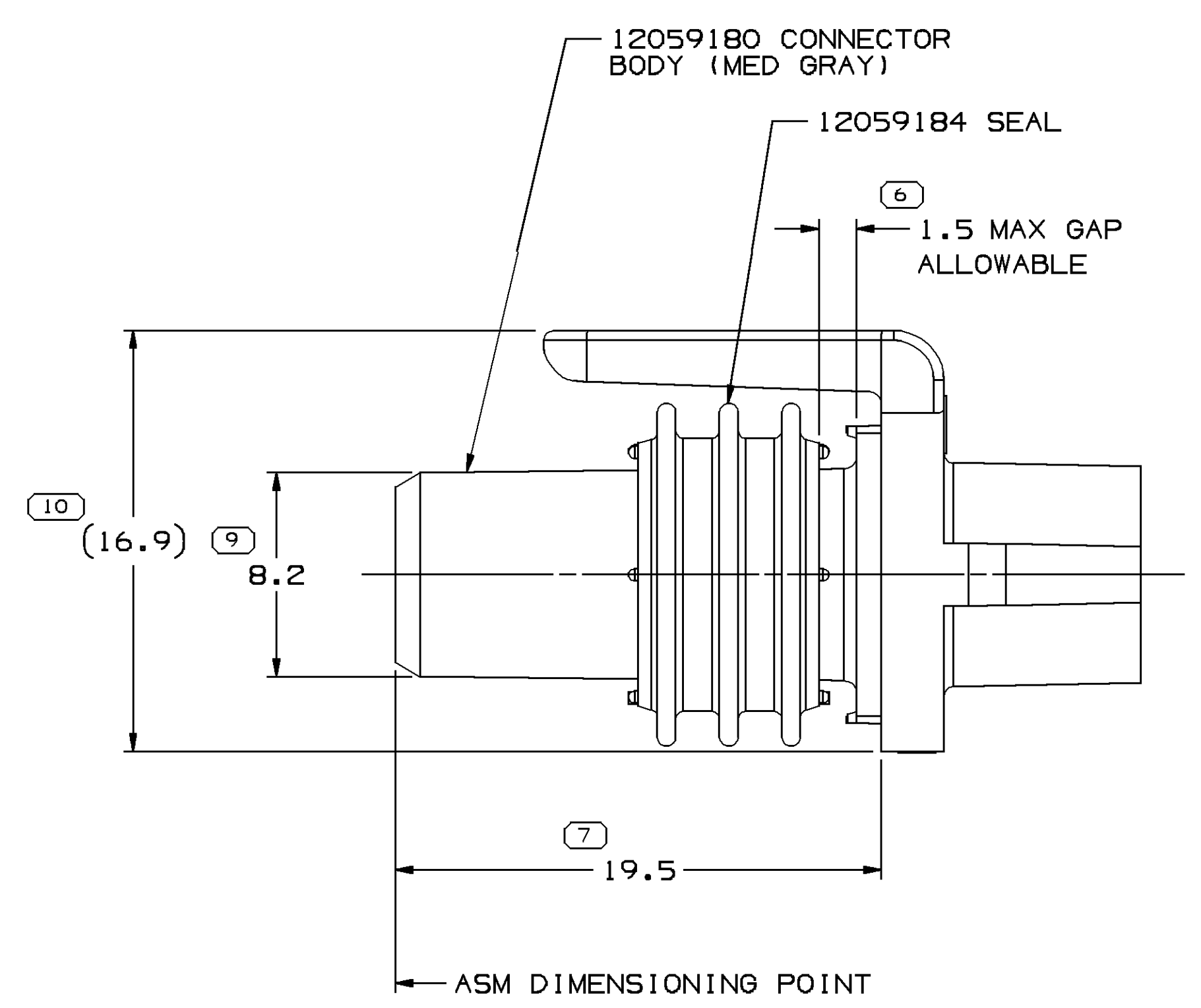


### MATING CONNECTOR INFORMATION

INSPECTION SYMBOLS SHOWN IN THESE VIEWS ARE FOR REFERENCE ONLY

#### NOTES

- UNLESS OTHERWISE SPECIFIED AND/OR INDICATED:  
 DIMENSIONS ARE TO FACE OF VIEW SHOWN AND AUTOMATICALLY ROUNDED BY COMPUTER FOR INSPECTION (SEE MATH MODEL FOR PRECISE DIMENSIONS). FOR ALL OTHER DIMENSIONS NOT SHOWN BUT REQUIRED FOR TOOL BUILD, SEE MATH MODEL FOR PRECISE TOOL PATH DATA.
- WHEN PARTS ARE SHIPPED, THEY MUST BE PACKED IN PLASTIC BAGS OR SHIPPING CONTAINERS MUST BE LINED WITH PLASTIC LINERS. BAGS OR LINERS MUST BE SEALED TO AVOID ENTRY OF FOREIGN MATTER.
- SEALING CODE 3 - DESIGN WILL PASS SALT FOG AND IMMERSION TEST AFTER CONDITIONING AS SPECIFIED IN ESA-644 (WEATHER-PACK), ESA-710 (METRI-PACK), ESA-650 (UNDERHOOD MICRO-PACK), C-4006 (WORLD CONNECTOR), ETC. - WHEN MATED TO MATING PART OR EQUIVALENT
- THIS PART IS NOT CONTROLLED FOR AUTOMATIC FEEDING.
- REFERENCE MATING COMPONENTS OR EQUIVALENT:  
 MATES TO HALOGEN HEAD LAMP BULB 9006-LOW BEAM.
- THIS PART ACCEPTS THE FOLLOWING COMPONENTS OR EQUIVALENT:  
 CAVITIES TO ACCEPT 12077411 TERMINAL OR EQUIVALENT.  
 SECONDARY TERMINAL LOCK 12059185  
 CABLE SEAL 12015323



SYMBOL DEFINITION		TOTAL NO OF INSPECTIONS REQUIRED	MISSING SYMBOLS
□	A DIMENSION WITHOUT AN INSPECTION REPORT SYMBOL DOES NOT REQUIRE INSPECTION. IT MAY BE CONTROLLED ON THE INDIVIDUAL COMPONENT DRAWING.	43	NO MISSING SYMBOL NUMBER
□	LAST NO. USED	39	

DWG STATUS				REVISION HISTORY				AUTH		APPROV	
DATE	STG	REV	N/P	CHG	ZONE	REV	COL	DR	DR	APV	APV
01M106	R	F1	-	-	-	CLEARED	REV COL REDRAWN TO PD AND UPDATED MATING BLADE INFO	279456	EFS	JVM	WTM

RECOMMENDED MATERIAL: GLASS REINFORCED NYLON OR POLYESTER.

- NOTES
- UNLESS OTHERWISE SPECIFIED AND/OR INDICATED:  
 DIMENSIONS ARE TO FACE OF VIEW SHOWN AND AUTOMATICALLY ROUNDED BY COMPUTER FOR INSPECTION (SEE MATH MODEL FOR PRECISE DIMENSIONS). FOR ALL OTHER DIMENSIONS NOT SHOWN BUT REQUIRED FOR TOOL BUILD, SEE MATH MODEL FOR PRECISE TOOL PATH DATA.  
 ALL RADIi 0.4  
 DRAFT IS 1° MAX ON ALL OUTSIDE SURFACES.  
 LOCKING FEATURES ARE IDENTICAL.
  - SEALING SURFACES MUST BE FREE OF DEFECTS AND PARTING LINES.

DIMENSIONAL RANGE (MM)		DIMENSIONAL RANGE (IN)		DIMENSIONAL RANGE (MM)		DIMENSIONAL RANGE (IN)	
FROM	TO	FROM	TO	FROM	TO	FROM	TO
> 0	> 20	> 0	> 30	> 100	> 150	> 200	> 300
20	30	30	70	100	150	200	300
TOLERANCE UNLESS OTHERWISE SPECIFIED				TOLERANCE UNLESS OTHERWISE SPECIFIED			
±0.15	±0.2	±0.3	±0.4	±0.5	±0.6	±0.8	±1.0
ANGULAR TOLERANCE 30°				ANGULAR TOLERANCE 30°			

**DELPHI**  
 DELPHI PACKARD ELECTRIC SYSTEMS  
 WYOMING, OH

DR	DATE
APV01 YERR L. BOZIS	21MY85
APV02 A. SWARTZ	11JN85
APV03 P. REEDY	14JN85
APV04	

UNLESS OTHERWISE SPECIFIED  
 THIS DOCUMENT IS IN ACCORDANCE WITH ASME Y14.5M-1994  
 AS APPROVED BY THE IN CHARGE, DIMENSIONING AND TOLERANCING ADDRESSES SHALL BE IDENTIFIED BY THE DRAWING OR FEATURES MAY BE BASED SEPARATELY PER DELPHI 10949001  
 SEE DRAWING

ALL DIMENSIONS ARE IN MILLIMETERS

THIRD ANGLE PROJECTION

DO NOT SCALE

USE MATH DATA

SCALE: 5:1

FRAME NO: 11

SHEET NO: 1 OF 1

REV: R F1

DRAWING NAME: ASM CONN 2 F M/P 280 GRA MD SLD

DRAWING NUMBER: 12059181