

THIS DRAWING AND DESIGN HEREON CONSTITUTES A PROPRIETARY DESIGN OF PACKARD ELECTRIC DIVISION AND IS NOT TO BE DUPLICATED OR REPRODUCED WITHOUT AUTHORITY OF PACKARD ELECTRIC DIVISION.

DO NOT SCALE

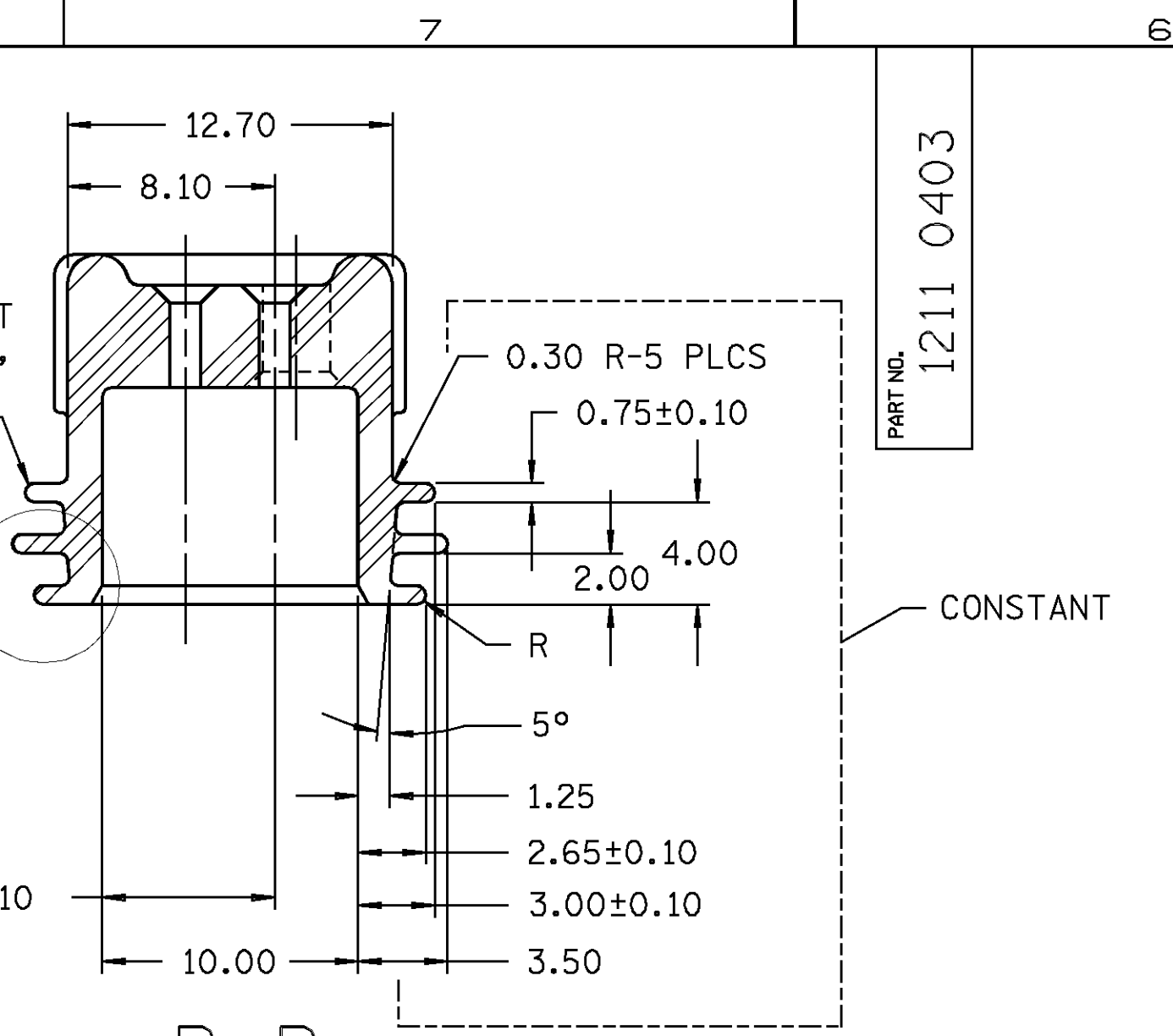
SEALING RIBS MUST BE FREE OF SINKS, VOIDS, KNIT LINES AND FLASH.

SEE ALTERNATE CONSTRUCTION

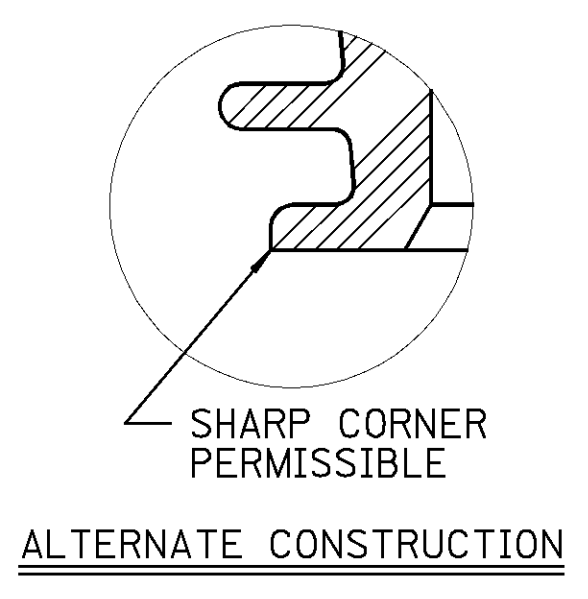
PACKARD ELECTRIC DIVISION
MOTORS CORPORATION
GENERAL WARREN, OHIO

4174A(2)

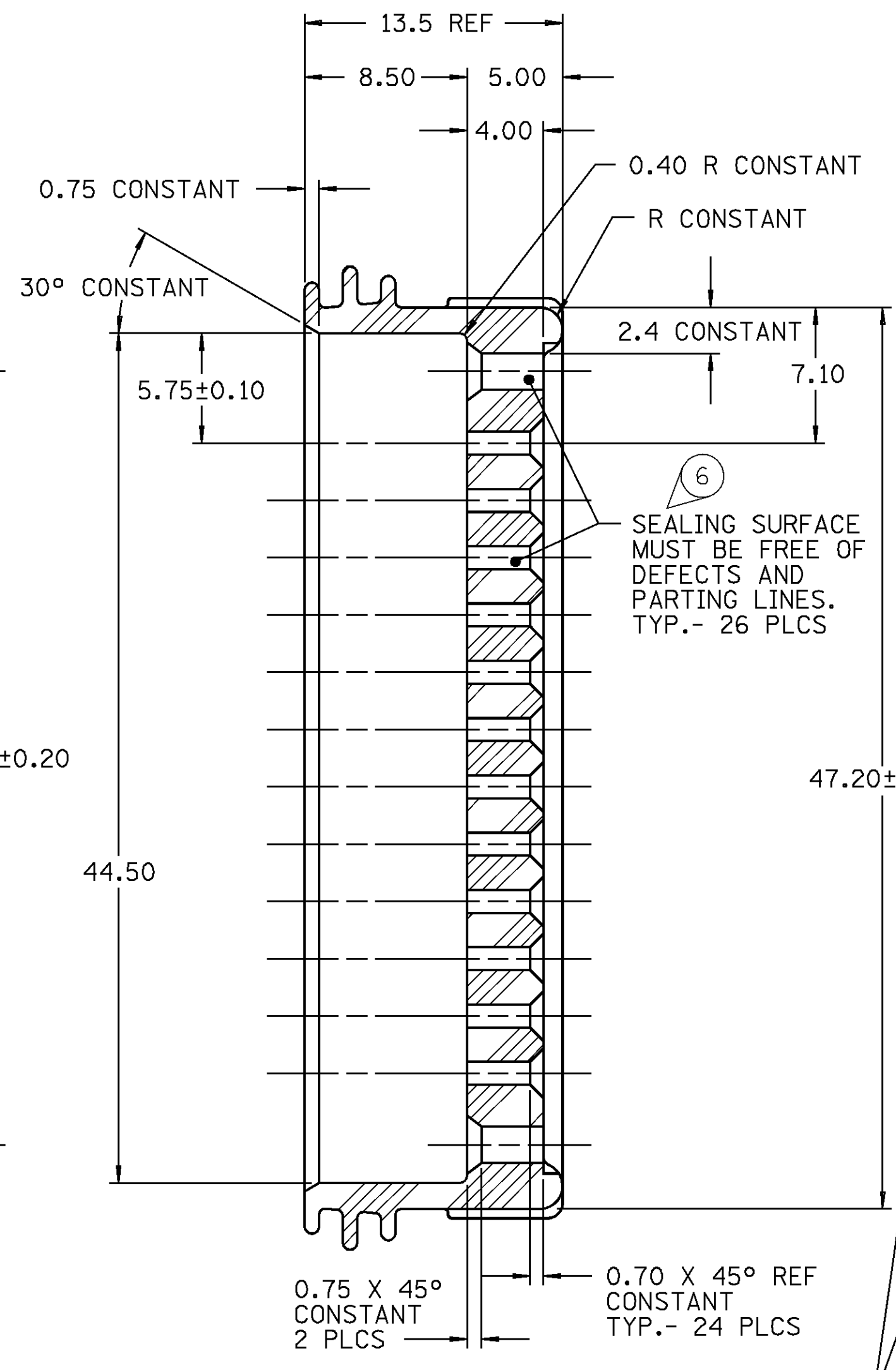
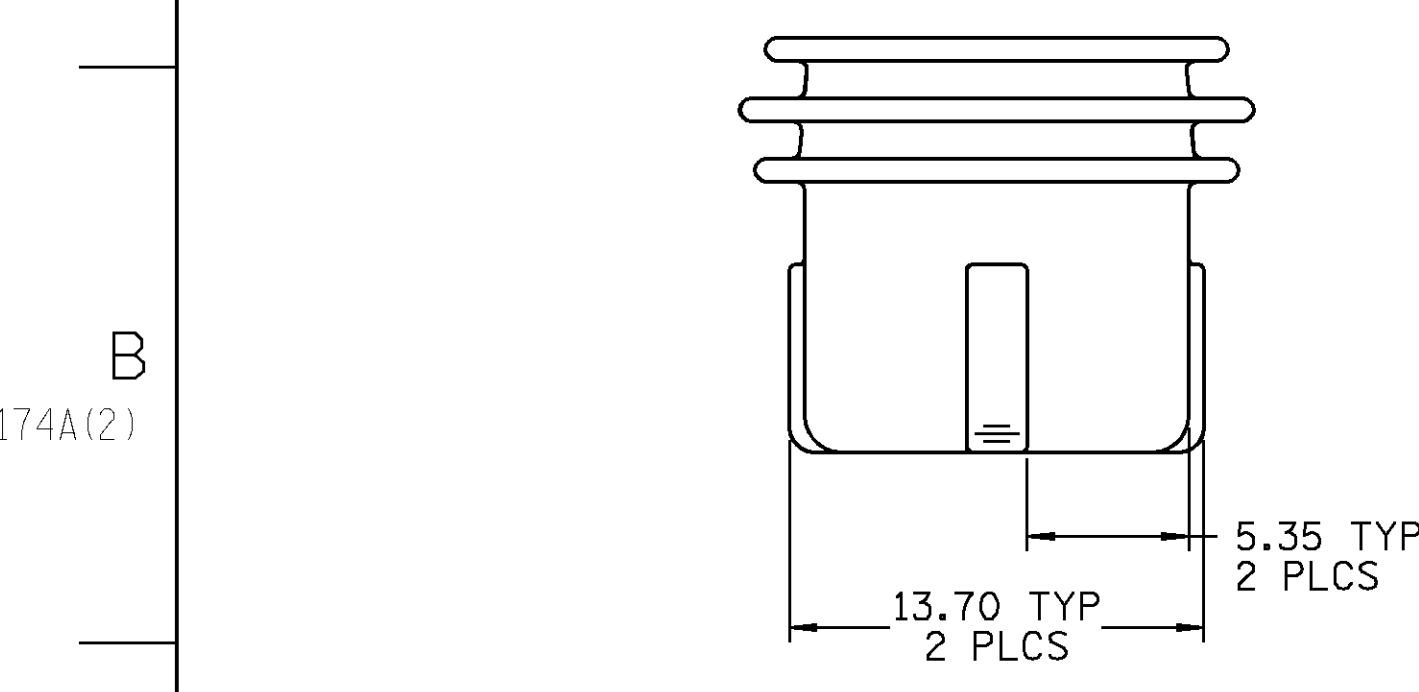
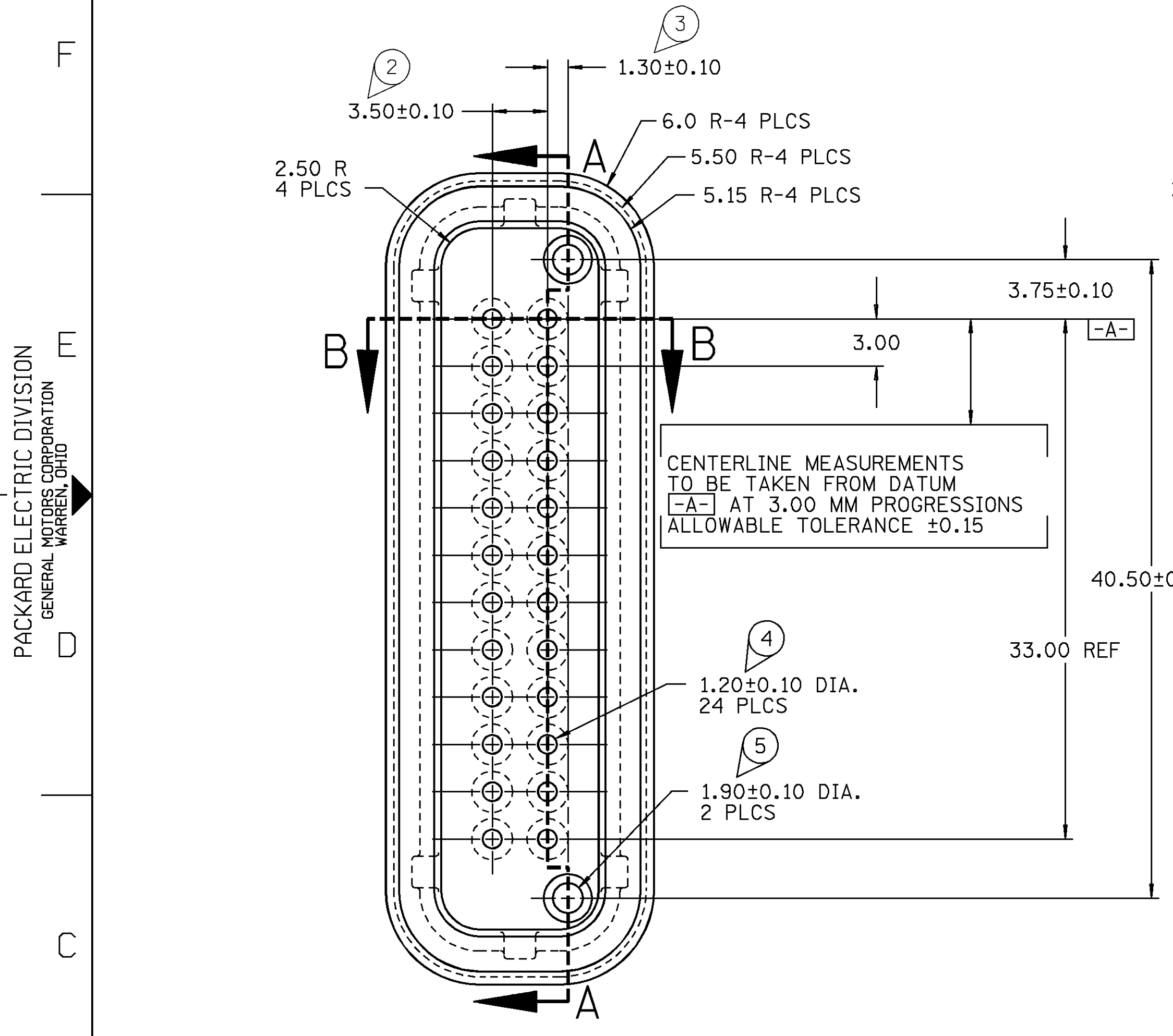
A



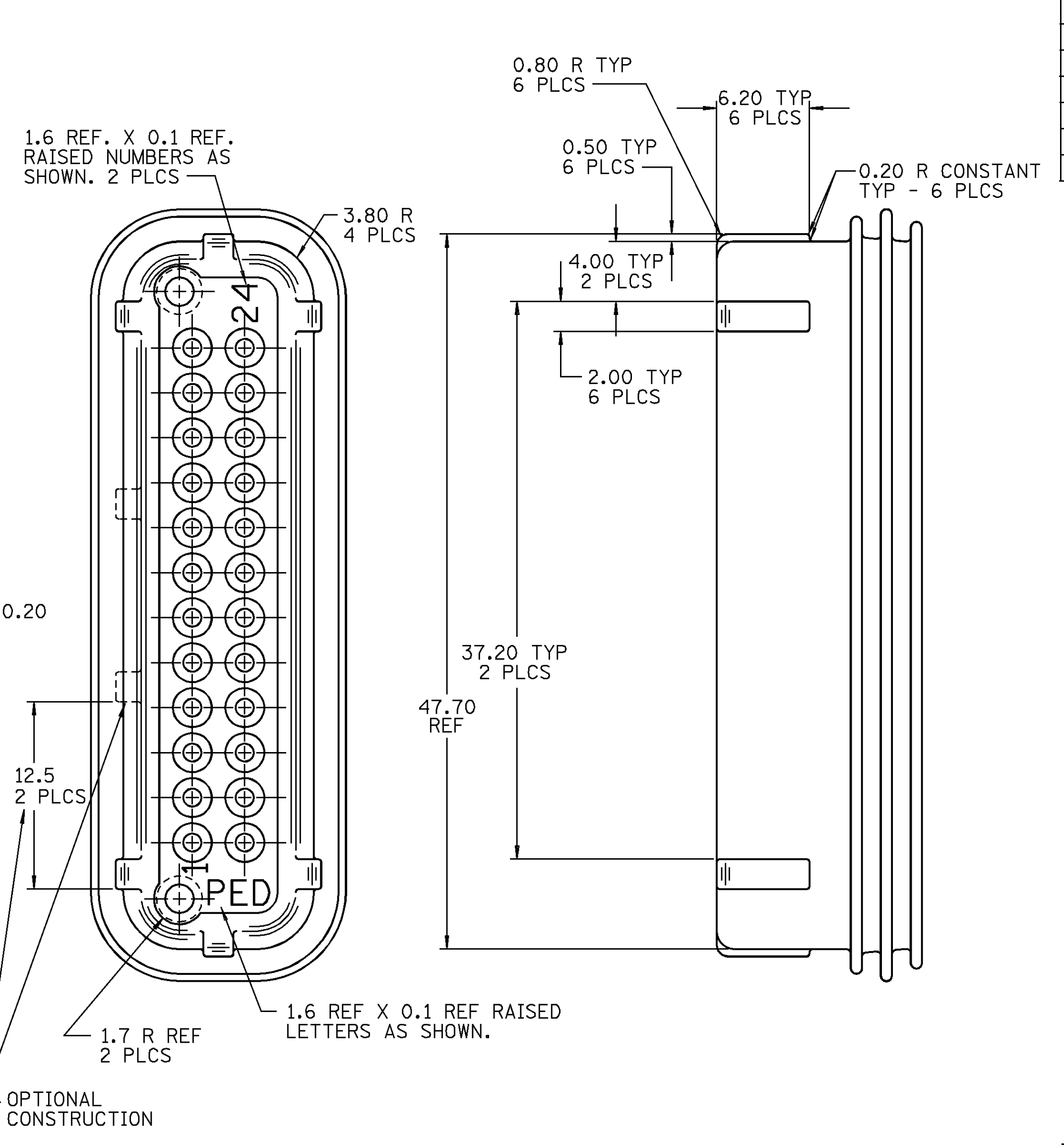
SECTION B-B



ALTERNATE CONSTRUCTION



SECTION A-A



OPTIONAL CONSTRUCTION

- NOTES**
- SEALING RIBS ARE IDENTICAL, EXCEPT AS SHOWN.
 - PARTS MUST BE DEFLASHED, WASHED AND DRIED AFTER MOLDING.
 - PARTS TO BE PACKED IN PLASTIC BAGS.
 - SEAL TO BE USED IN CONJUNCTION WITH STRAIN RELIEF 12110155, OR EQUIVALENT.
 - THIS PART ALSO USED WITH RETAINER 12129183, CONNECTOR 12129225, TERMINAL 12084912, C.P.A. 12110299, CAVITY PLUG(S) 12129557 AND WHEN FULLY ASSEMBLED MATES TO HEADER CONNECTOR ASSEMBLY 12092320 OR EQUIVALENTS.
 - ENVIRONMENTAL SEAL CLASS CODE 3.
 - THIS PART IS NOT CONTROLLED FOR AUTOMATIC FEEDING.
 - SEAL TO ACCEPT CABLE O.D. BETWEEN 1.67 MM MIN. TO 2.12 MM MAX. AND 0.8MM² OF CABLE PM3101.
 - SEALING HOLES ARE IDENTICAL, EXCEPT AS SHOWN.
 - "O" DENOTES DIMENSIONS AND CHARACTERISTICS THAT ARE IMPORTANT TO THE FUNCTION AND/OR PROCESSING OF THE PART. IT DOES NOT NECESSARILY INDICATE AN SPC DIMENSION. THIS DRAWING HAS 7 SNOWCONES.

THE FOLLOWING ITEMS APPLY UNLESS OTHERWISE SPECIFIED:

FOR FEATURES-OF-SIZE, PERFECT STRAIGHTNESS NOT REQUIRED AT MMC. FOR DIAMETRAL FEATURES, ROUNDNESS MUST BE WITHIN THE MMC AND LMC (LEAST MATERIAL CONDITION) BOUNDARY. TRUE POSITION TOLERANCES, AND RELATED DATUMS (EXCEPT PLANE SURFACES), APPLY AT MMC. OTHER GEOMETRIC TOLERANCES, AND RELATED DATUMS, APPLY RFS. SEPARATE TRUE POSITION CALLOUTS MAY BE GAGED SEPARATELY, REGARDLESS OF DATUM REFERENCE.

GEOMETRIC DRAWING SYMBOLS:

FLAT	RUNOUT	ROUND	ANGULAR
STRAIGHT	TRUE POSITION	CYLINDRICAL	CONCENTRIC
SQUARE	PROFILE OF A SURFACE	SYMMETRICAL	PROFILE OF A LINE
PARALLEL	MAXIMUM MATERIAL CONDITION (MMC)	PROJECTED TOL. ZONE	BASIC DIMENSION
REGARDLESS OF FEATURE SIZE (RFS)	DIAMETER		

DATE	SYM	REVISION RECORD	AUTHORITY	DR	CK
16AU90	A	RELEASED	900005	CJV	CJV
04MR91	B	1.90±0.10 DIA. WAS 2.20±0.10 DIA., 1.20±0.10 DIA. WAS 1.40±0.10 DIA., 0.75 X 45° CONSTANT WAS 0.60 X 45° CONSTANT, 0.70 X 45° REF CONSTANT WAS 0.60 X 45° REF CONSTANT			
22JL91	B1	REVISED NOTE #7	140388	JK	BAR
09SE93	B2	REVISED NOTES AND PART NAME	157147	TEB	TEB

		FILE SPEC: ****USER**** DGN#SPECIFICATION***** *****SYTIME*****
THIRD ANGLE PROJECTION		METRIC DIMENSIONS ARE IN MILLIMETERS UNLESS OTHERWISE SPECIFIED.
CODE NO. 6901	TOLERANCE UNLESS OTHERWISE SPECIFIED DECIMALS ANGLAR ±0°	
Q.C. -R-4066	ONE PLACE ± 0.3 TWO PLACE ± 0.15	
DWG. DATE 16AU90	SCALE 4:1	DR. C. VANDOOZER 16AU90
EST. NO.	CK. C. VANDOOZER DATE 16AU90	
REFERENCE NO. 12092314	APPR. BRUCE SERBIN	DATE 30AU90
APPR. R.J. POLEHONKI DATE 30AU90		
MATERIAL SPEC. PM002260-001 SILICONE - GREEN		
NAME SEAL 24F MIC/P 100W		
PART NO. 1211 0403	SIZE D	