

NOTE- TERMINALS ARE IDENTICAL

MATERIAL SPECIFICATIONS:

RECOMMENDED

- BASE METAL - CDA-210, BILDING, SPRING TEMPER
- PLATING - 0.0025/0.0075 MM THICK TIN

MINIMUMS

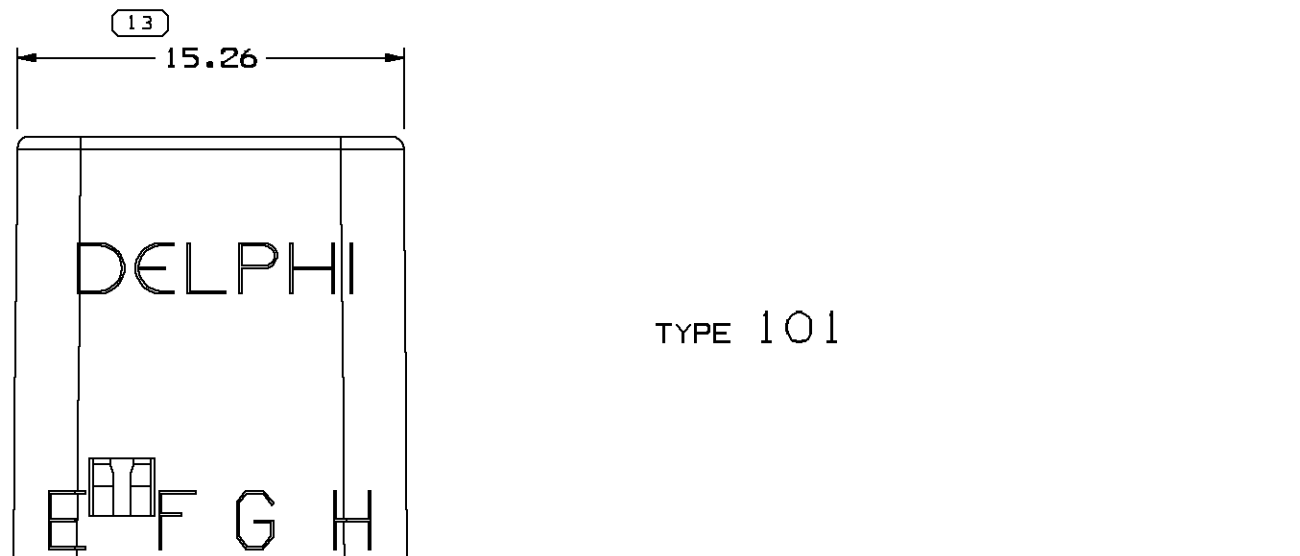
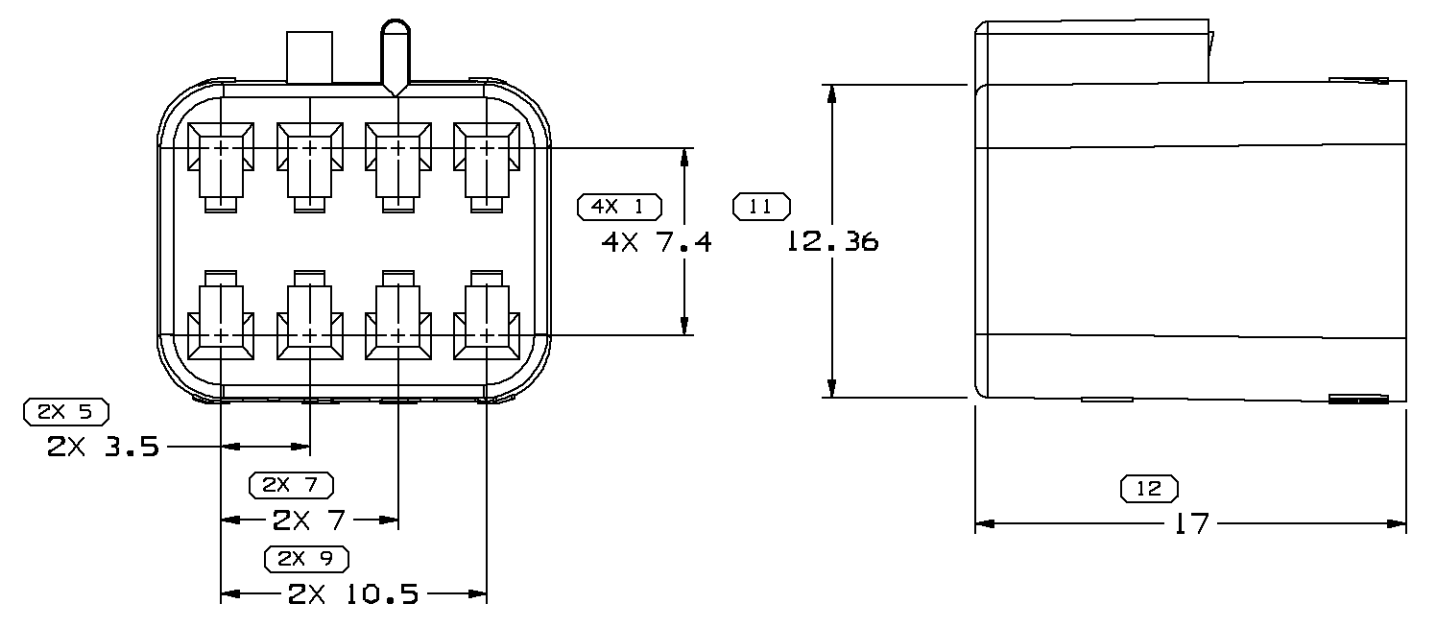
- ELECTRICAL CONDUCTIVITY - > 20% IACS @ 20°C. USE OF A MATERIAL WITH CONDUCTIVITY < 20% IACS MUST BE APPROVED BY PACKARD ELECTRIC MATERIALS ENGINEERING.
- TENSILE STRENGTH - 407 MPa

PLATING - FOR LOW ENERGY (< 5v) & NON-PASSENGER COMPARTMENT POWER CIRCUITS, 0.0025/0.0075 MM THICK TIN. FOR MATERIALS CONTAINING 10% OR MORE ZINC, AN UNDERPLATE OF COPPER 0.0025/0.0075 MM THICK IS REQUIRED.

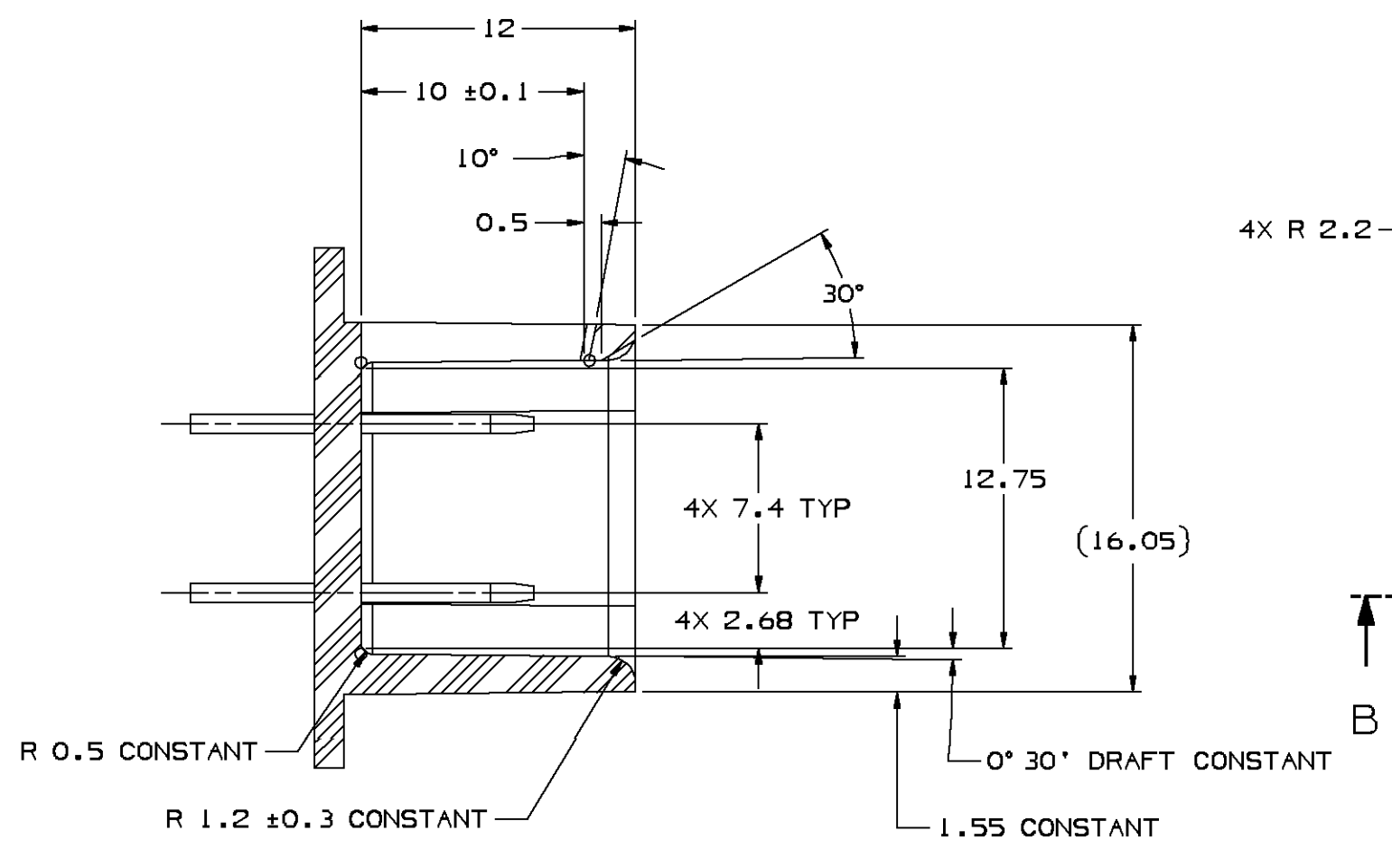
BLADE THICKNESS

- UNPLATED = 0.813 ± 0.025
- TIN PLATED = 0.825 ± 0.350

MATING BLADE INFORMATION
SCALE 10:1

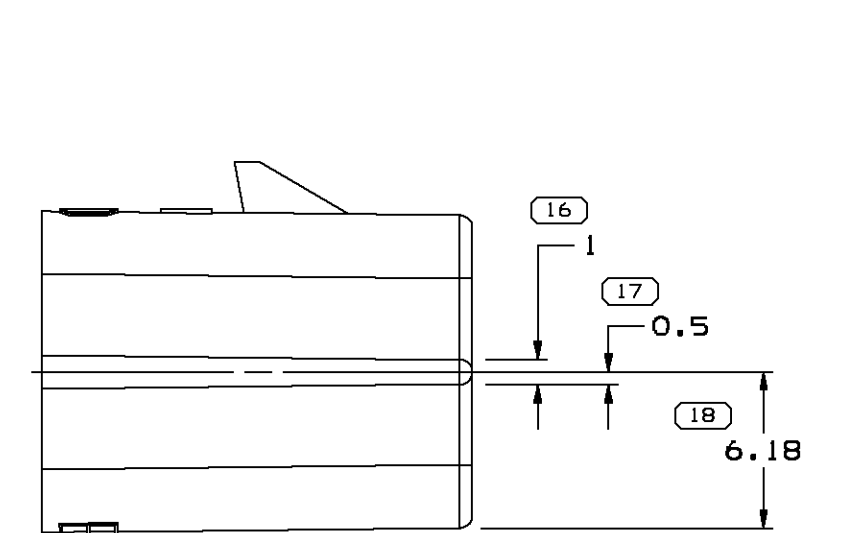


TYPE 101

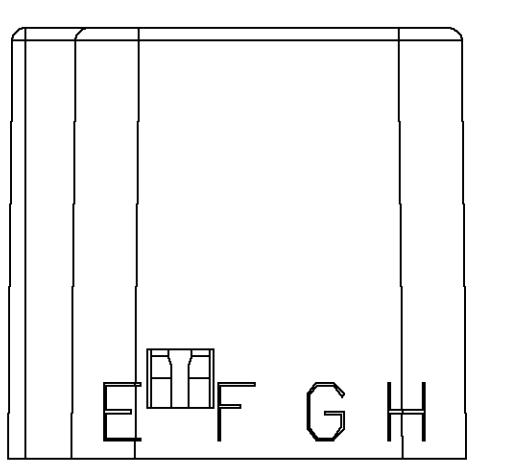
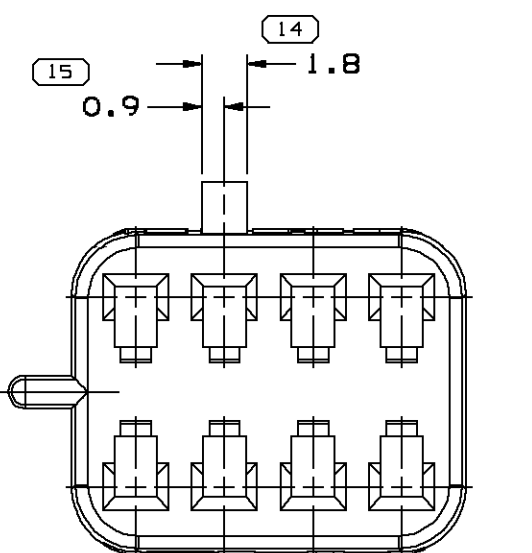


SECTION A-A
MATING SHROUD INFORMATION

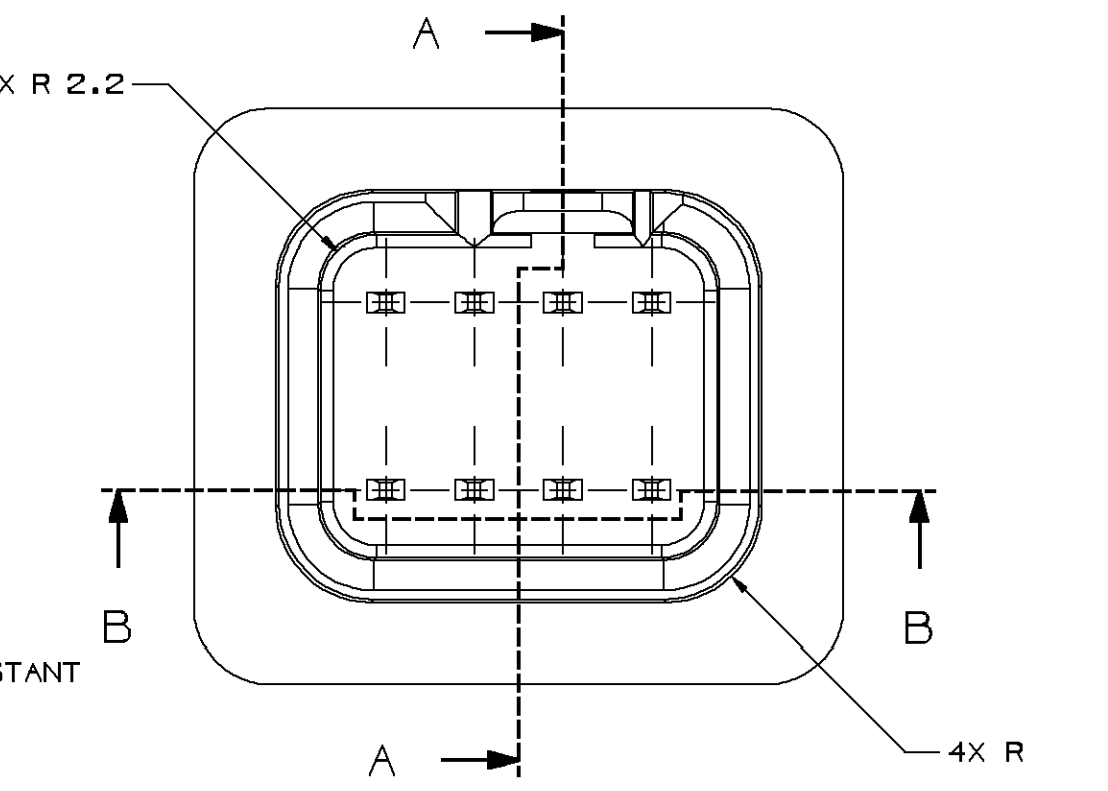
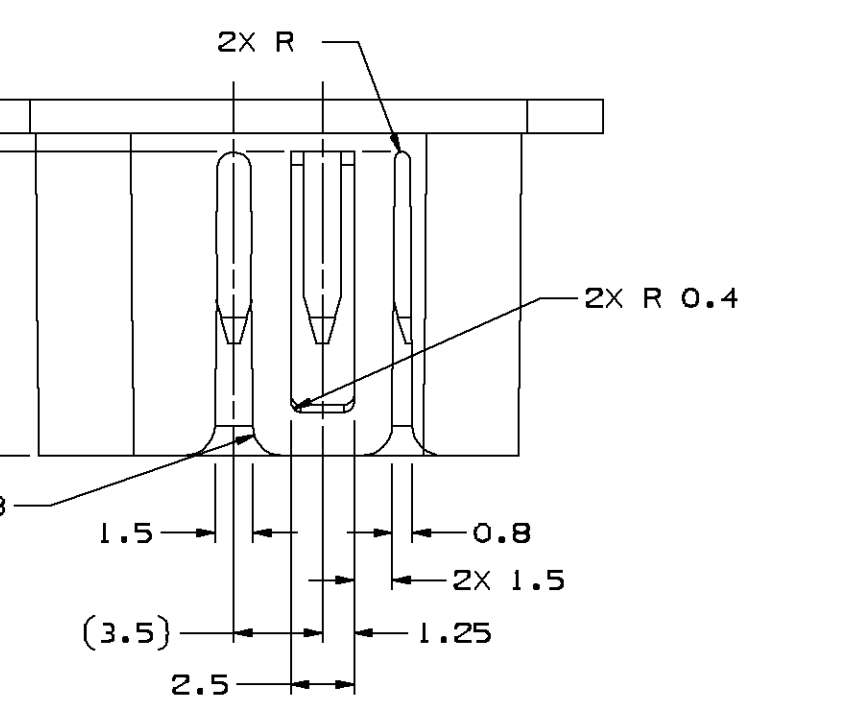
- NOTES:
- UNLESS OTHERWISE SPECIFIED AND/OR INDICATED: DIMENSIONS ARE TO FACE OF VIEW SHOWN AND AUTOMATICALLY ROUNDED BY COMPUTER FOR INSPECTION. (SEE MATH MODEL FOR PRECISE DIMENSION) ALL RADI 0.5 DRAFT IS 0° 30° ON ALL OUTSIDE SURFACES
 - TERMINALS MUST WITHSTAND A MINIMUM PUSHOUT FORCE OF 89N (20 LBS)
 - RECOMMENDED BODY MATERIAL: NYLON 66 OR EQUIVALENT FLEXIBLE THERMOPLASTIC.



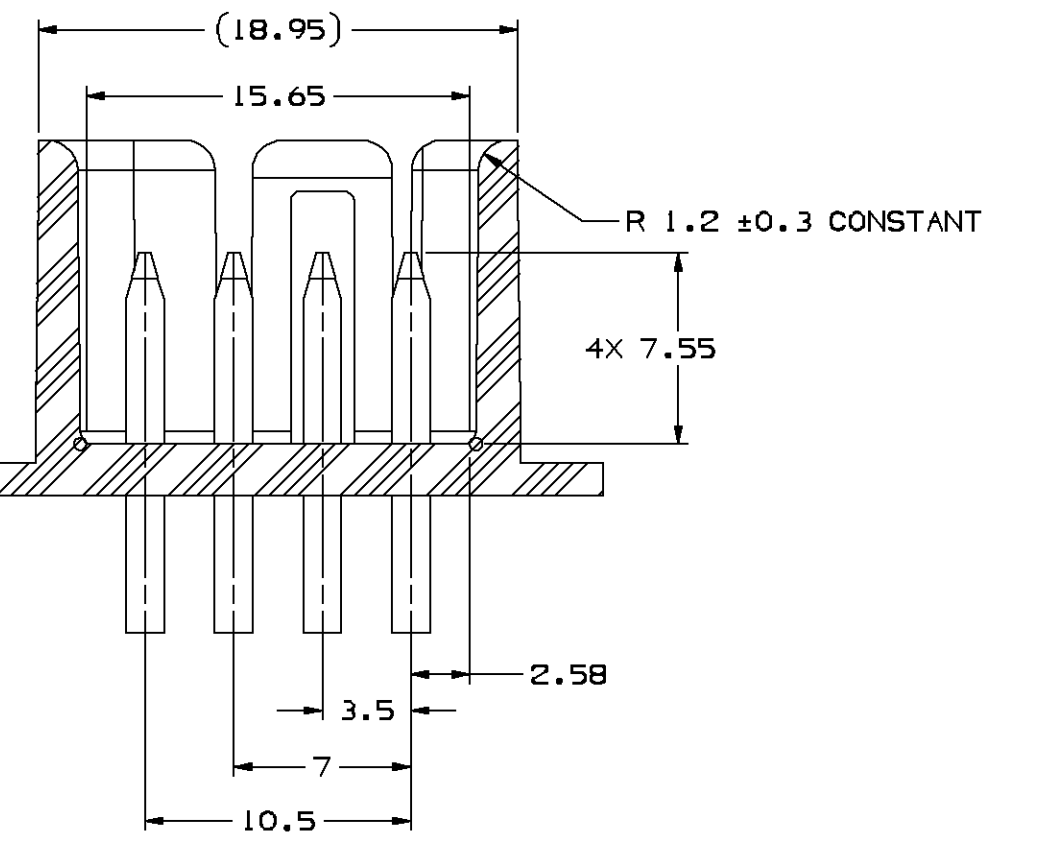
TYPE 102
SAME AS TYPE 101
EXCEPT AS SHOWN



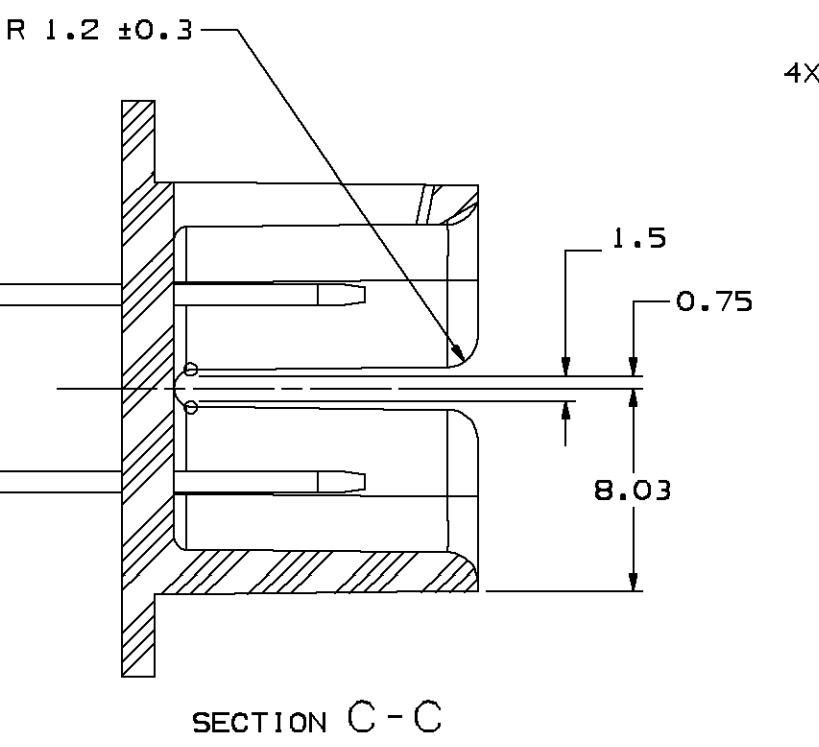
DRAWING NUMBER		12065399	
SIZE	SCALE	FRAME NO	SHEET NO
A1x3	5:1	2 OF 2	1 OF 1
REV	N/P	DATE	BY
07	-		



TYPE 101



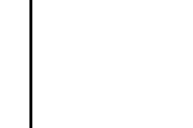
SECTION B-B
LOCK ARM NOT SHOWN FOR CLARITY



SECTION C-C

MATING SHROUD INFORMATION

- NOTES:
- UNLESS OTHERWISE SPECIFIED AND/OR INDICATED: DIMENSIONS ARE TO FACE OF VIEW SHOWN AND AUTOMATICALLY ROUNDED BY COMPUTER FOR INSPECTION. (SEE MATH MODEL FOR PRECISE DIMENSION)
 - MATING COMPONENTS OR EQUIVALENT: CONNECTOR 12045688 TERMINAL 12047883 MAX INSULATION CRIMP MUST BE LESS THAN 2.3 HIGH AND 2.7 WIDE SECONDARY TERMINAL LOCK 12045689, 2 PER CONNECTOR
 - THIS PART WILL PASS THRU A 18.5 DIA MIN HOLE.
 - MATERIAL RECYCLING CODE >PA66< PER SAE J1344. (21X10.1) RAISED CHARACTERS AS SHOWN TO BE LOCATED ON ANY EXTERIOR SURFACE. OPTIONAL CONSTRUCTION TO BE NO MATERIAL RECYCLING CODE.
 - (21X10.1) RAISED DELPHI CORPORATE BRAND TO BE LOCATED ON ANY EXTERIOR SURFACE, PREFERABLY VISIBLE AT FINAL ASSEMBLY. OPTIONAL CONSTRUCTION TO BE "PED" OR NO LOGO.



12186098	03	AD	-	M3592012 PA66 IM HS GRA LY	102	1.909
12065398	03	-	-	M3592024 PA66 HS IM GRN	101	1.878
12047886	02	AB	-	M3592001 PA66 IM HS BLK	101	1.878
PART NO	REV	N/P	STATUS	MATERIAL SPECIFICATION AND COLOR	TYPE	VOLUME CM³

SYMBOL DEFINITION		TOTAL NO OF INSPECTIONS REQUIRED	MISSING SYMBOLS
A DIMENSION WITHOUT AN INSPECTION REPORT SYMBOL () DOES NOT REQUIRE INSPECTION. IT MAY BE CONTROLLED ON THE INDIVIDUAL COMPONENT DRAWING.		1B	2-4 6 8 10
		LAST NO. USED	1B

DATE	REV	N/P	CHK	ZONE	REVISION HISTORY	AUTH	DR	APPROV	2
040001	R	02	-	-	ALL PARTS - REVISED GRAPHICS, ADDED OPTIONAL CONSTRUCTION & REVISED MATERIAL SPECIFICATION	212476	PH	EOV	BMC
12DE01	R	03	-	-	12186098 - UPDATED PDM ATTRIBUTES	215046	MFL	MFL	DLB
28JAD2	R	04	-	-	ALL PARTS - ADDED "TYPE" TO CHART	220131	FRB	FRB	AK
29NO05	R	05	-	-	ALL PARTS - UPDATED PDM ATTRIBUTES	274579	J.PIC	J.P	BB
10FEO6	R	06	-	-	12065398 - MAT'L SPEC WAS M3592002	277376	JTZ	FRB	EST
27FEO6	R	07	-	-	12186098 - REVISED INDEX FEATURE TO MAKE MODEL MATCH PART	277639	PH	PH	BB

DELPHI
DELPHI PACKARD ELECTRIC SYSTEMS
WARREN, OH

DWG TYPE: PART DRAWING

DATE: 07/07

OR: R. SHAUB, J.FEB7

APPRO: R.W. BLEASON, 16DEB7

APPRO: R.C. BARKER, 04JAB8

UNLESS OTHERWISE SPECIFIED:
DIMENSIONS ARE IN MILLIMETERS
DIMENSIONS ENCLOSED IN () INDICATE REFERENCE DIMENSIONS AND NO TOLERANCE LIMITS ARE ESTABLISHED

THIRD ANGLE PROJECTION

DO NOT SCALE USE MATH DATA

DRAWING NUMBER: TAXI CONN F M/P 150

DRAWING NUMBER: 12065399

SCALE: 5:1

FRAME NO: 2

SHEET NO: 2

OF 2

REV: 07

15062399