

**MATERIAL SPECIFICATIONS**

**RECOMMENDED**

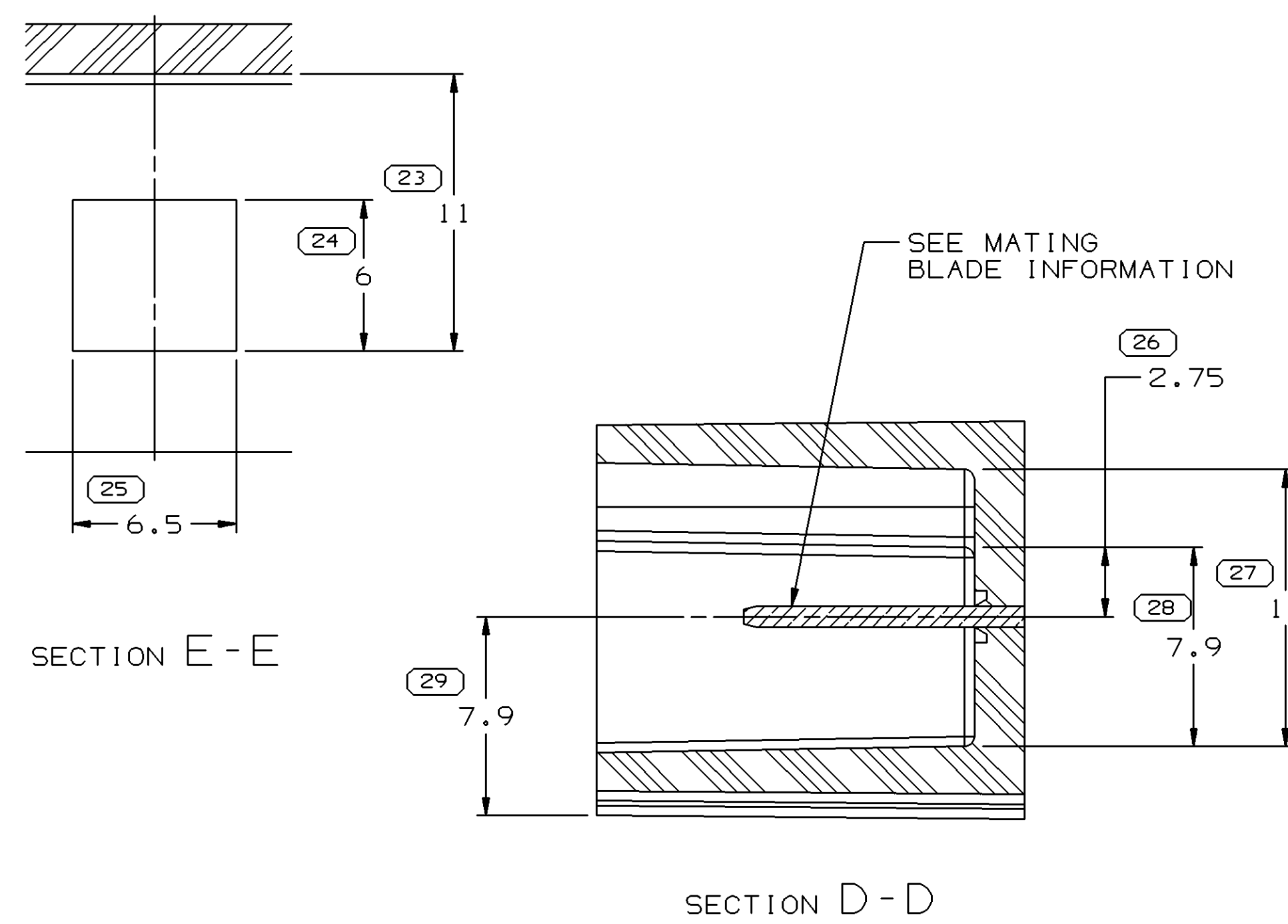
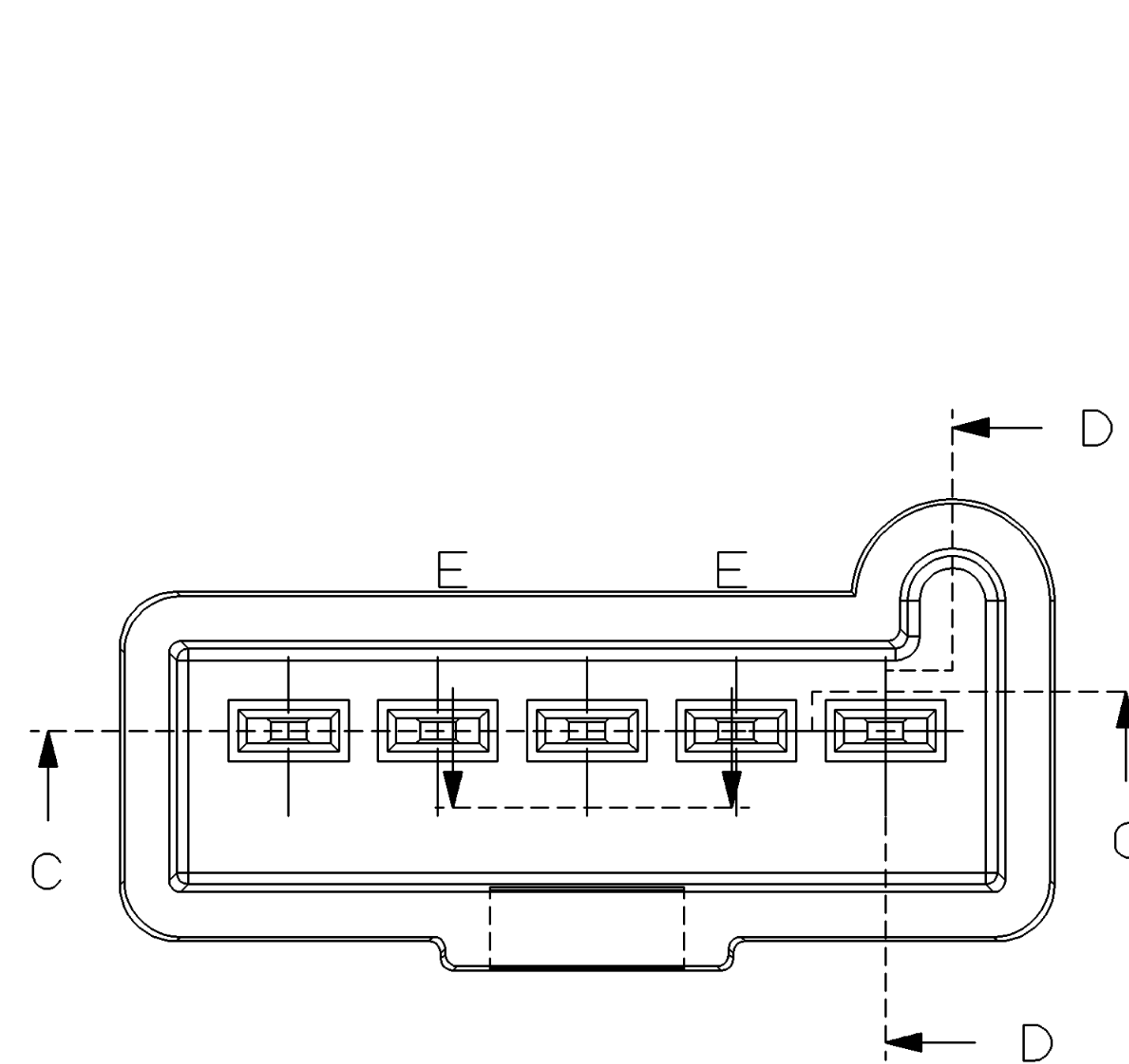
BASE METAL - CDA-210, GILDING, EXTRA SPRING TEMPER  
 PLATING - 0.0025 / 0.0075 MM THICK TIN

**MINIMUMS**

ELECTRICAL CONDUCTIVITY - ≥ 20% IACS AT 20°C.  
 TENSILE STRENGTH - 407 MPa  
 PLATING - FOR LOW ENERGY (≤ 5 V) AND NON-PASSENGER COMPARTMENT POWER CIRCUITS, 0.0025 MM / 0.0075 MM THICK TIN; FOR MATERIALS CONTAINING 10% OR MORE ZINC, AN UNDERPLATE OF COPPER 0.0025 MM / 0.0075 MM THICK IS REQUIRED.

**MATING BLADE INFORMATION**

INSPECTION SYMBOLS SHOWN IN THESE VIEWS ARE FOR REFERENCE ONLY  
 SCALE 10:1



**NOTES**

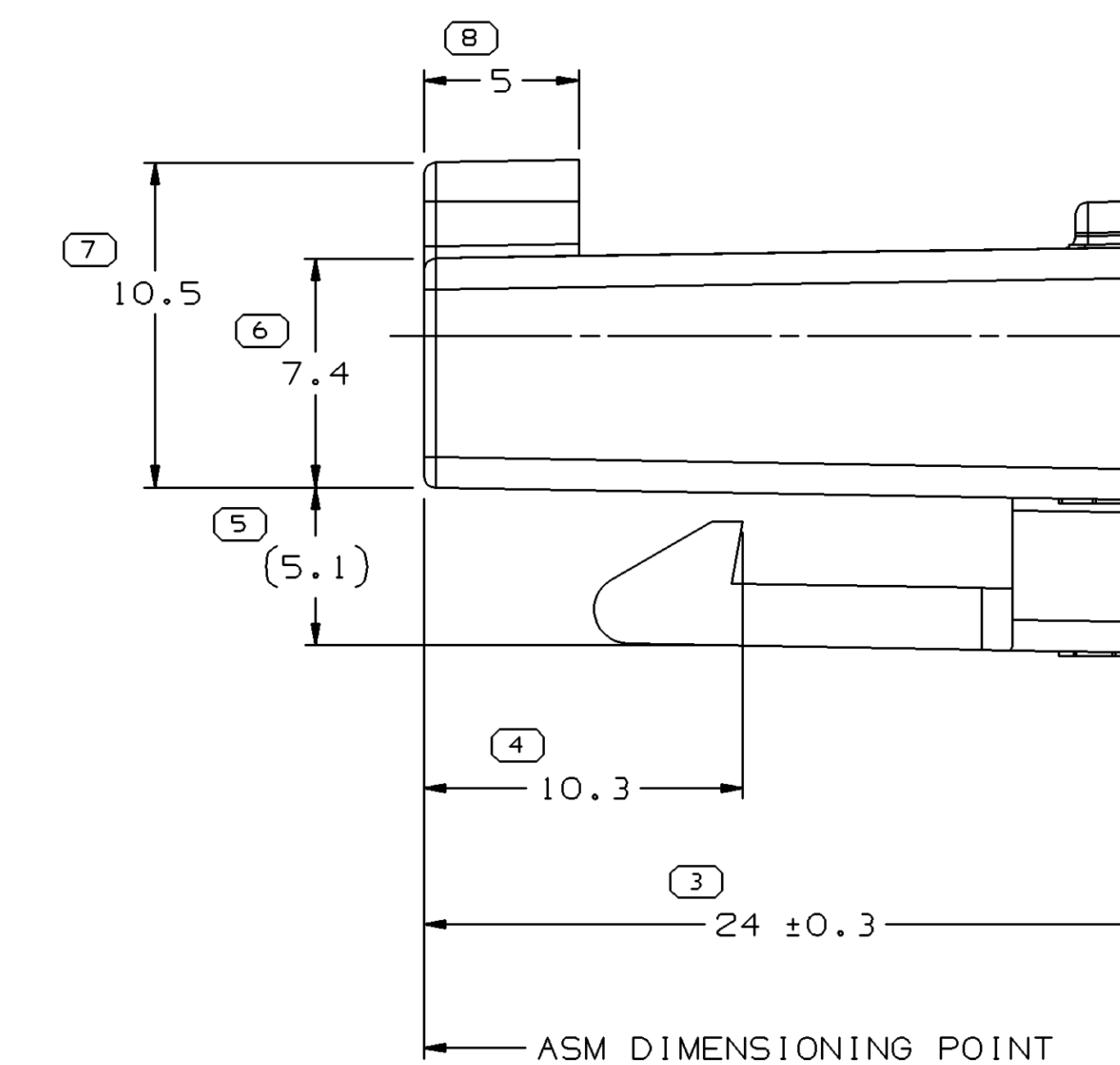
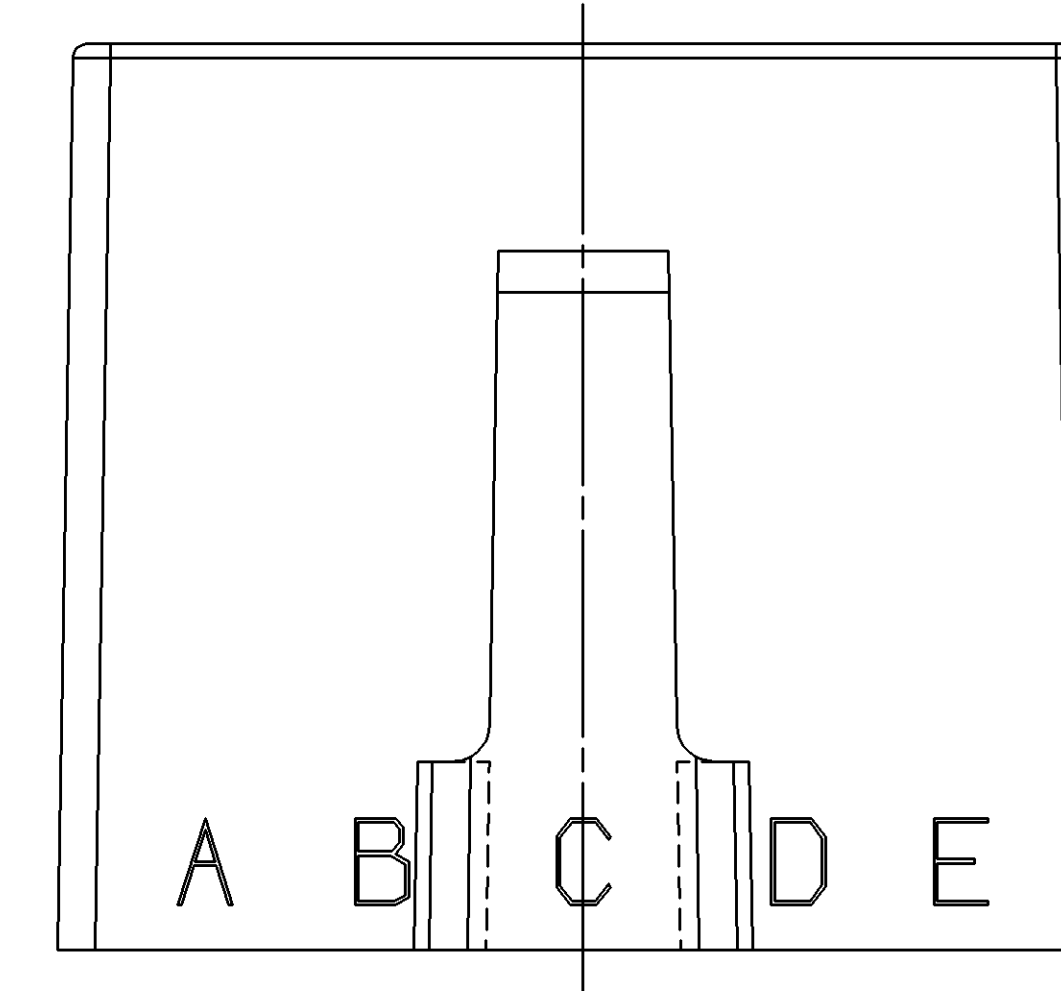
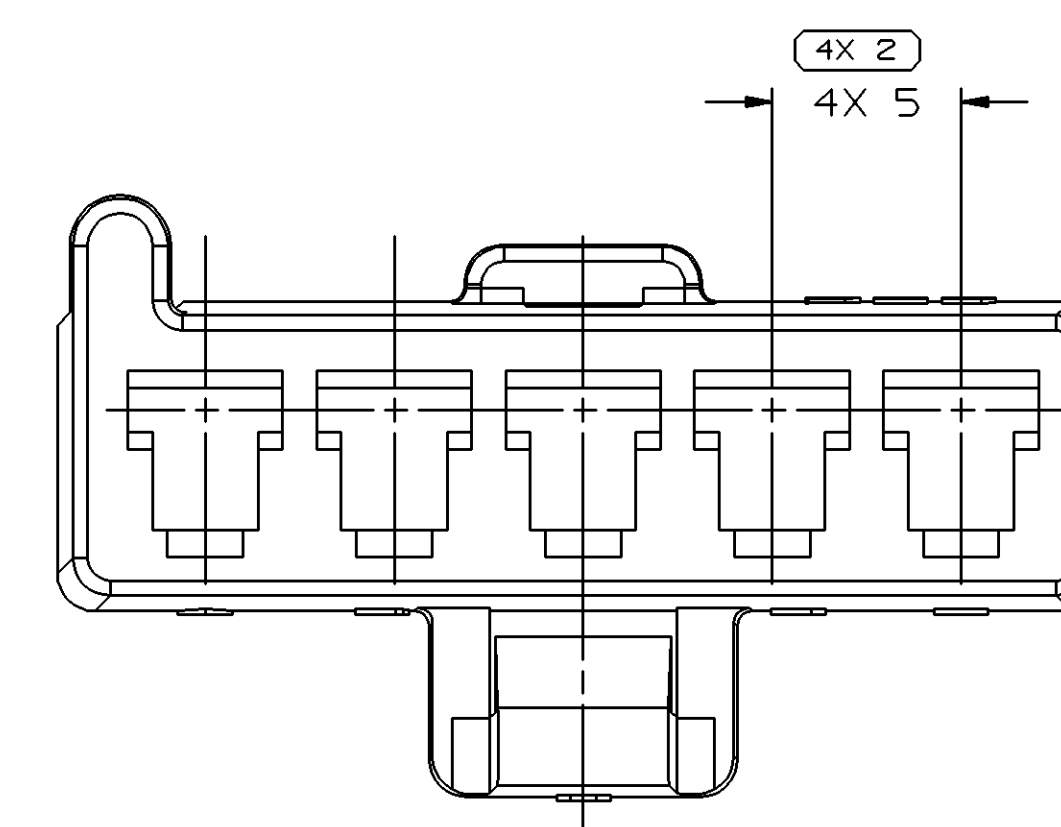
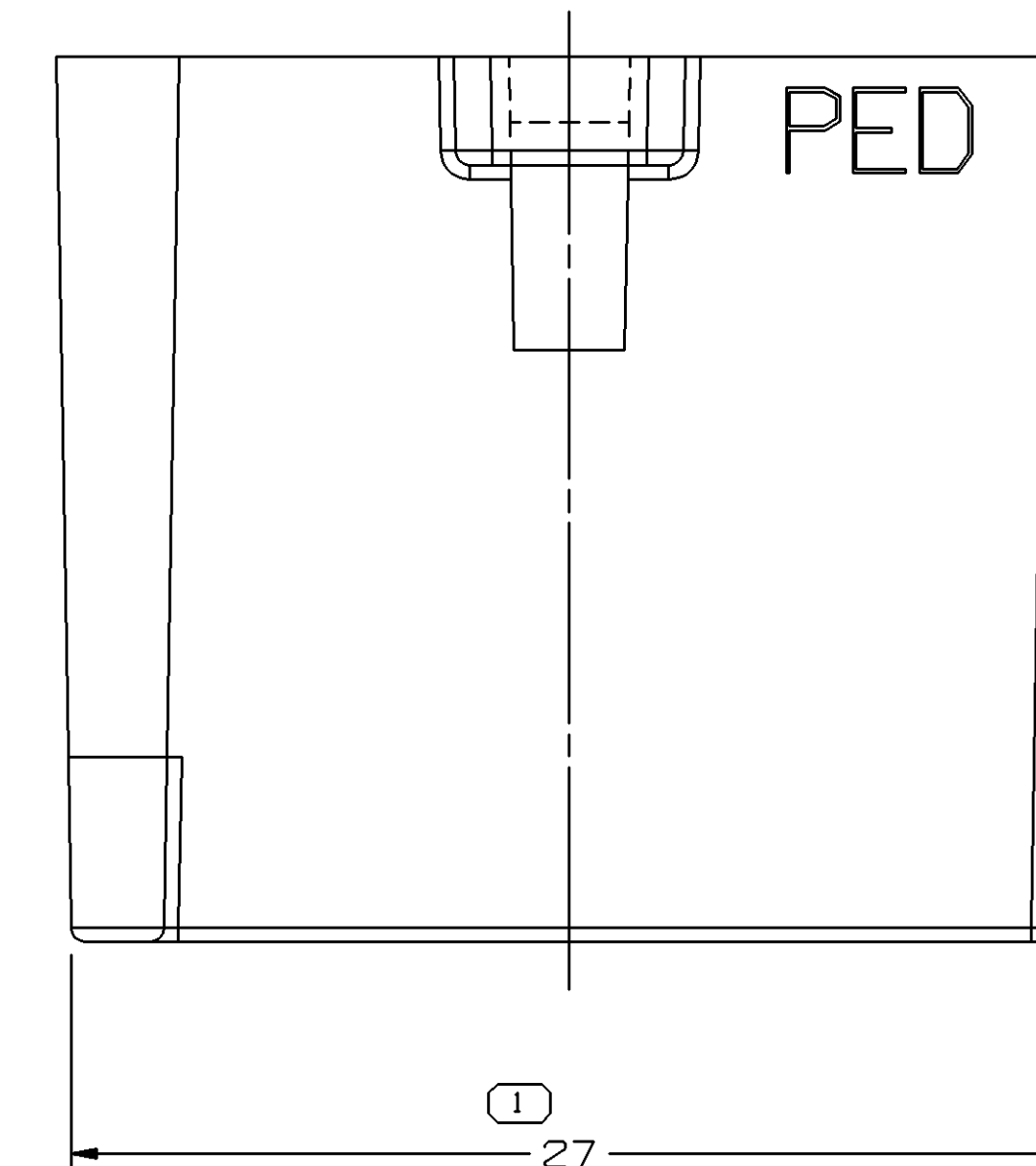
- UNLESS OTHERWISE SPECIFIED AND/OR INDICATED: DIMENSIONS ARE TO FACE OF VIEW SHOWN AND AUTOMATICALLY ROUNDED BY COMPUTER FOR INSPECTION ALL RADII 0.4 DRAFT IS 1° ON ALL INSIDE AND OUTSIDE SURFACES

**MATING SHROUD INFORMATION**

INSPECTION SYMBOLS SHOWN IN THESE VIEWS ARE FOR REFERENCE ONLY

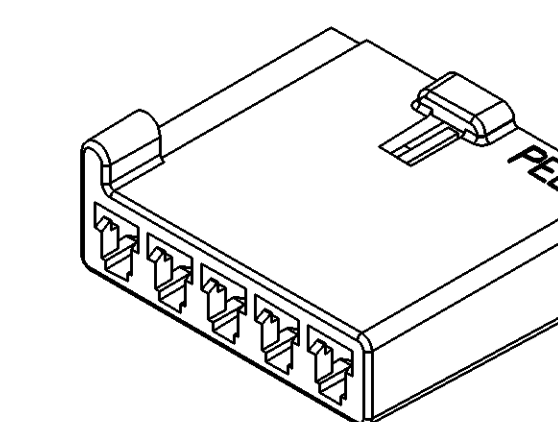
SYMBOL DEFINITION		TOTAL NO OF INSPECTIONS REQUIRED		MISSING SYMBOLS	
A	DIMENSION WITHOUT AN INSPECTION REPORT SYMBOL DOES NOT REQUIRE INSPECTION. IT MAY BE CONTROLLED ON THE INDIVIDUAL COMPONENT DRAWING.	42		NO MISSING SYMBOL NUMBER	
		LAST NO. USED	29		

DWS STATUS						REVISION HISTORY				AUTH	DR	APVD	APVD
DATE	STG	REV	N/P	CHK	ZONE							1	2
12JAO4	R	E1	-	-	-	CLEARED REV COLUMN, REDRAWN TO PD AND CREATED CUSTOMER PART DRAWING				250288	JAA	JAA	WTM
07JAO5	R	E2	-	-	-	UPDATED PDM ATTRIBUTES				263066	HAM	HAM	WTM



**NOTES**

- UNLESS OTHERWISE SPECIFIED AND/OR INDICATED: DIMENSIONS ARE TO FACE OF VIEW SHOWN AND AUTOMATICALLY ROUNDED BY COMPUTER FOR INSPECTION (SEE MATH MODEL FOR PRECISE DIMENSIONS). FOR ALL OTHER DIMENSIONS NOT SHOWN BUT REQUIRED FOR TOOL BUILD, SEE MATH MODEL FOR PRECISE TOOL PATH DATA.
- MATERIAL RECYCLING CODE PER ISO 11469. (2.3X10.1) RAISED CHARACTERS AS SHOWN TO BE LOCATED ON ANY EXTERIOR SURFACE. OPTIONAL CONSTRUCTION TO BE NO MATERIAL RECYCLING CODE.
- MATING COMPONENTS OR EQUIVALENT: ASM CONNECTOR 12041424 SECONDARY LOCK 12041430
- THIS PART ACCEPTS THE FOLLOWING COMPONENTS OR EQUIVALENT: CAVITIES TO ACCEPT 12015823 TERMINAL OR EQUIVALENT.
- (2.3)X(10.1) RAISED DELPHI CORPORATE BRAND TO BE LOCATED ON ANY EXTERIOR SURFACE, PREFERABLY VISIBLE AT FINAL ASSEMBLY. OPTIONAL CONSTRUCTION TO BE "PED" OR NO LOGO.
- THIS CONNECTOR LIMITED TO 2 MM² PVC CABLE OR SMALLER APPLICATION



VIEW SCALE DOES NOT REFLECT ACTUAL PART SIZE

DIMENSIONAL RANGE (MM)		TOLERANCE UNLESS OTHERWISE SPECIFIED		CHART E1	
FROM	TO	±	MSD	±	MSD
> 0	> 20	> 0.10	> 0.10	> 0.10	> 0.10
> 20	> 30	> 0.15	> 0.15	> 0.15	> 0.15
> 30	> 40	> 0.20	> 0.20	> 0.20	> 0.20
> 40	> 50	> 0.25	> 0.25	> 0.25	> 0.25
> 50	> 60	> 0.30	> 0.30	> 0.30	> 0.30
> 60	> 70	> 0.35	> 0.35	> 0.35	> 0.35
> 70	> 80	> 0.40	> 0.40	> 0.40	> 0.40
> 80	> 90	> 0.45	> 0.45	> 0.45	> 0.45
> 90	> 100	> 0.50	> 0.50	> 0.50	> 0.50
> 100	> 150	> 0.60	> 0.60	> 0.60	> 0.60
> 150	> 200	> 0.70	> 0.70	> 0.70	> 0.70
> 200	> 250	> 0.80	> 0.80	> 0.80	> 0.80
> 250	> 300	> 0.90	> 0.90	> 0.90	> 0.90
> 300	> 400	> 1.00	> 1.00	> 1.00	> 1.00

DWS TYPE		PART DRAWING	
STYLE		DISTR CODE	D
VOLUME (CP)	2,756		
UNLESS OTHERWISE SPECIFIED THIS DOCUMENT IS IN ACCORDANCE WITH ASME Y14.5M-1994 AS MODIFIED BY THE DIMENSIONAL DIMENSIONING AND TOLERANCING ADDENDUM-2003. SEPARATE PATTERNING OF FEATURES MAY BE GIVEN SEPARATELY REGARDLESS OF DATUM REFERENCES.			
ALL DIMENSIONS ARE IN MILLIMETERS			
THIRD ANGLE PROJECTION			
DO NOT SCALE			
USE MATH DATA			

DELPHI			
DELPHI PACKARD ELECTRIC SYSTEMS WARREN, OH			
DR	DATE	APVD1	APVD2
DAN THOMAS	30SEP87	R.W. GLEASON	04DEB7
R.C. BARKER	04JAB8	A.H. WINYARD	05JAB8
SUBSTANCES OF CONCERN AND RECYCLED CONTENT PER DELPHI 10949001			
MATERIAL M3592001 PA66 HS 1M BLK			
DRAWING NAME CONN 5 F M/P 280 BLK			
DRAWING NUMBER 12041429			
SIZE	SCALE	FRAME NO	SHEET NO
A0	5:1	1 OF 1	1 OF 1
		REV	N/P
		R	E2