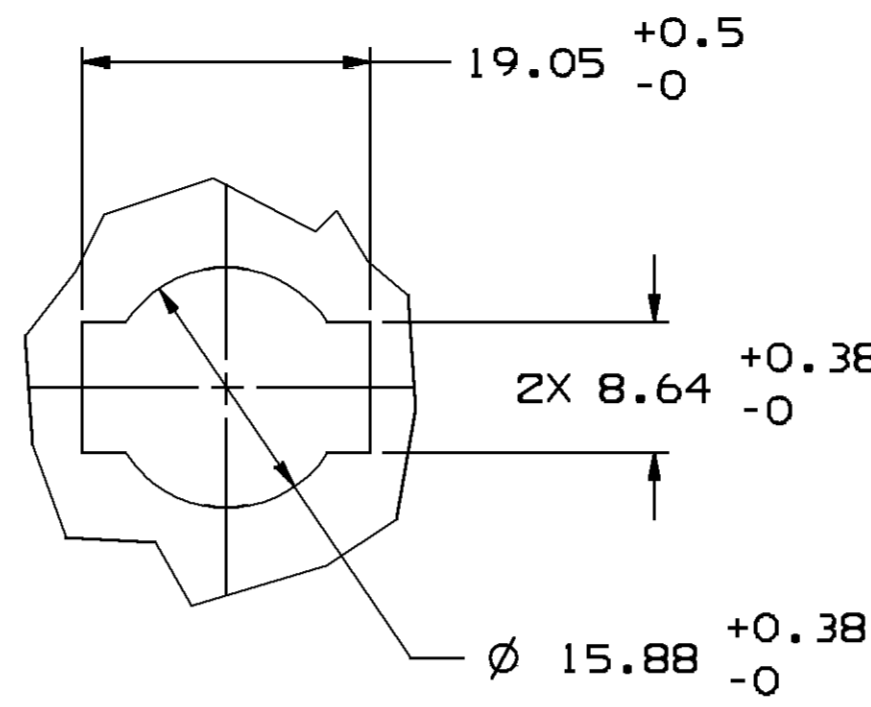
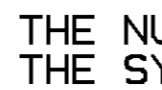


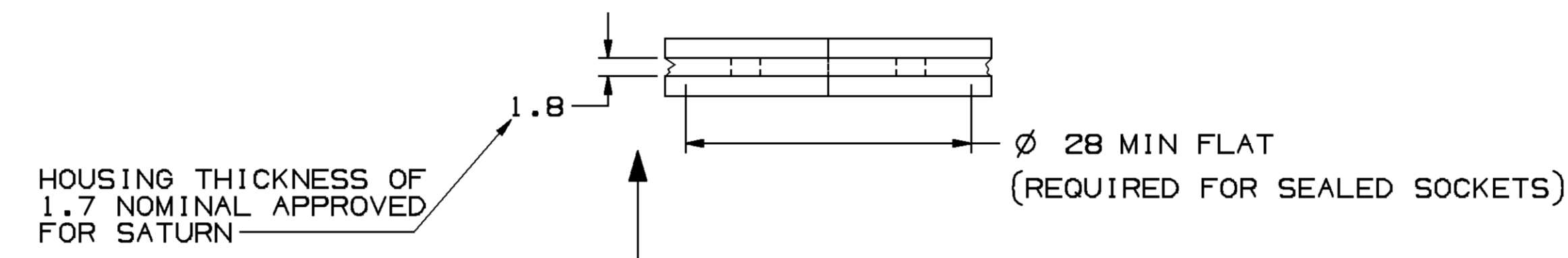
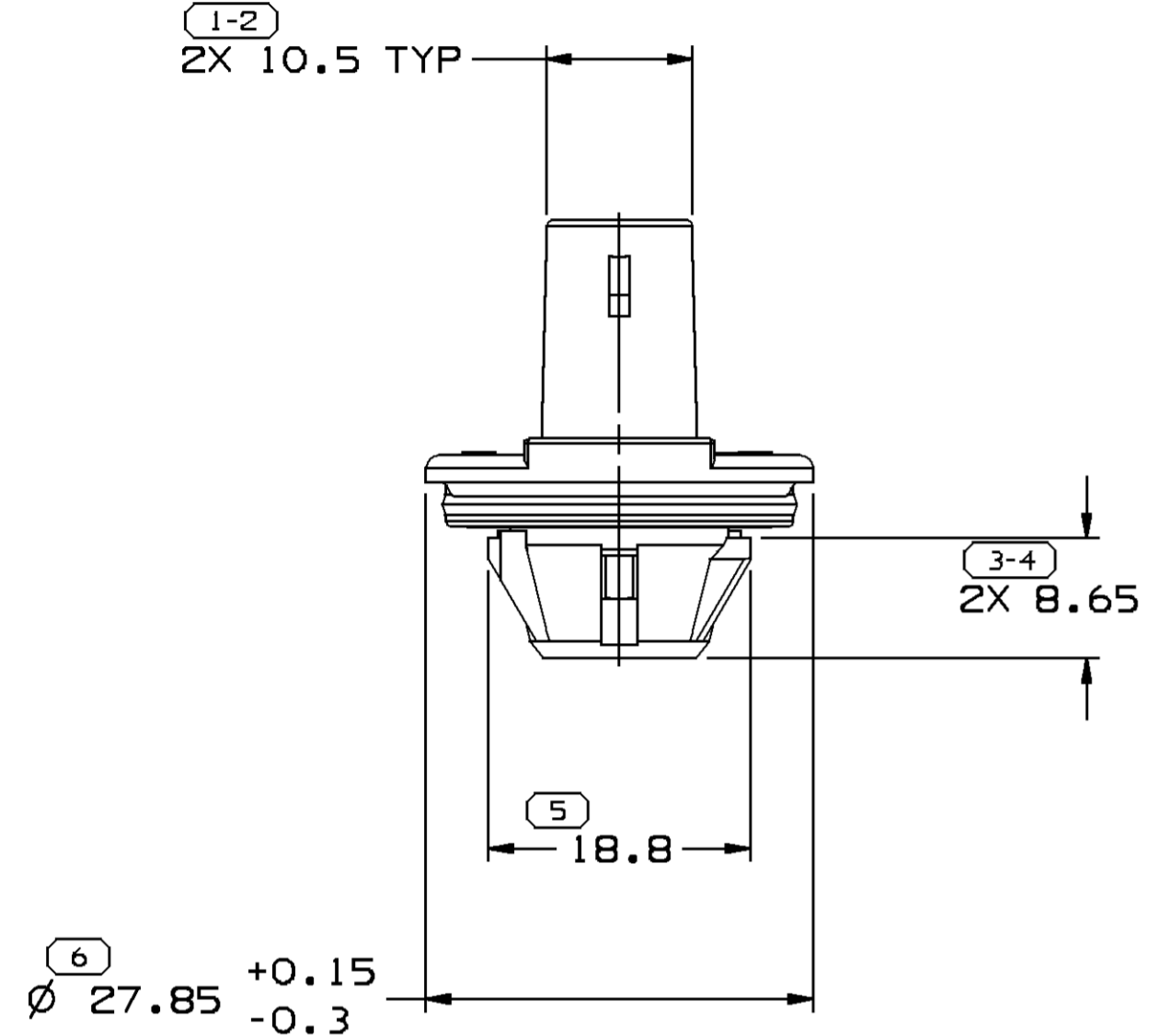
OPTIONAL MOUNTING HOLE



PREFERRED MOUNTING HOLE

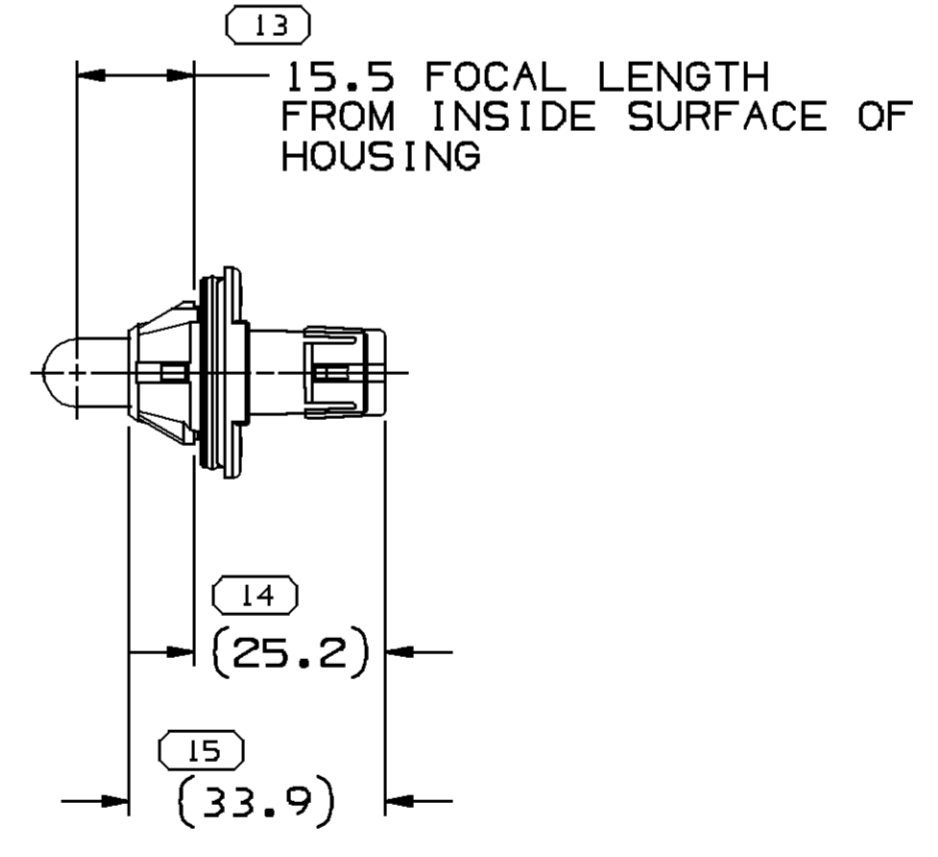
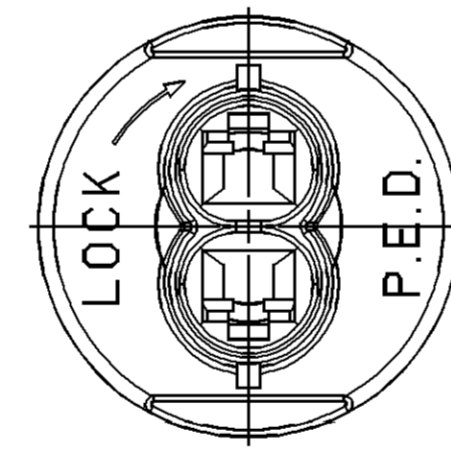
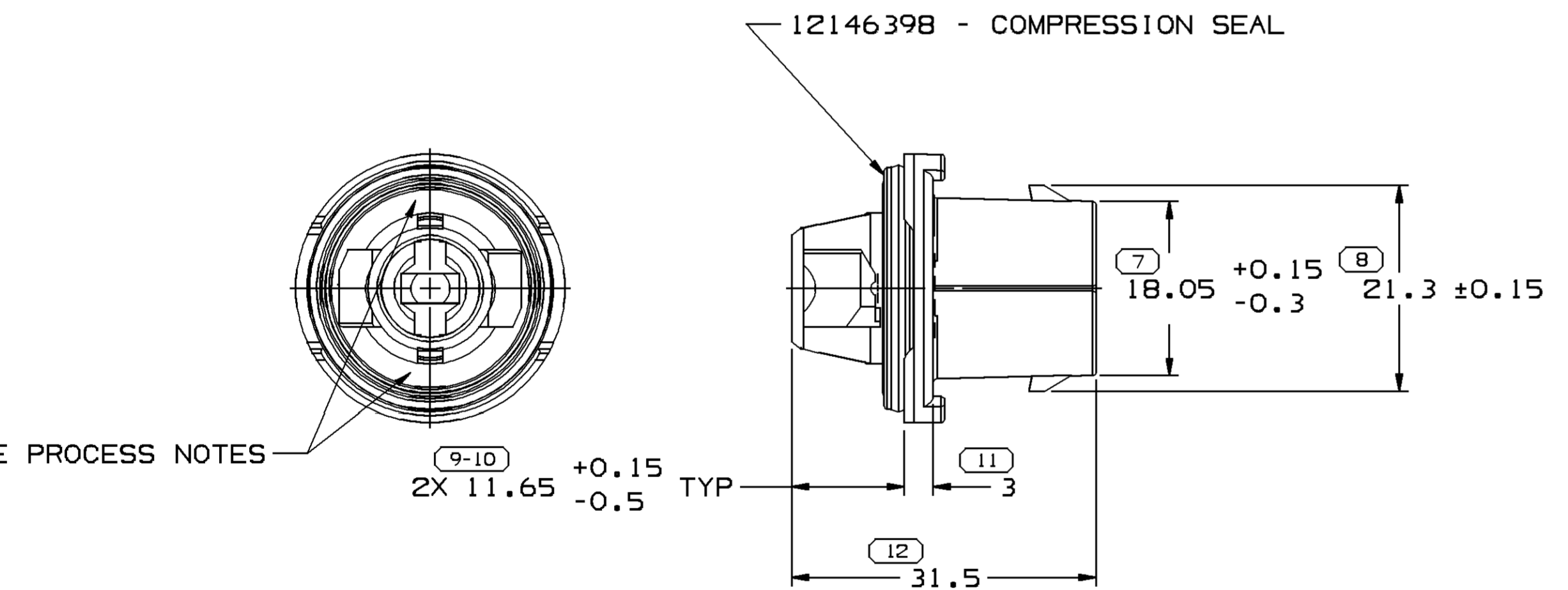
SYMBOL DEFINITION		MISSING NUMBERS	
THE NUMBER INSIDE THE SYMBOL  CORRESPONDS TO THE NUMBER ON THE INSPECTION REPORT FOR THIS DRAWING/PART NUMBER	TOTAL NO. OF SYMBOLS ON DRAWING	12	
	LAST NO. USED	15	

DWG STATUS				ZONE	REVISION HISTORY	AUTH	DR	APVD1	APVD2
DATE	STG	REV	N/P						
23AU99	R	001	-	-	12110053 - WAS SEPARATE DRAWING	191519	HGH	CMP	JA
23AU99	R	002	-	-	15324681 - RELEASED	990005	HGH	CMP	JA
23AU99	R	003	-	-	ALL PARTS-11.65 WAS 11.67, ADDED PROCESS NOTES & REMOVED 27.85 DIA; 12161107- WAS SEPARATE DWG; 12110053- REVISED 12146595 MAT'L SPEC	195289	HGH	CMP	JA
23AU99	R	004	-	-	12110053 - REVISED 12146595 MAT'L SPEC	196821	HGH	CMP	JA
23AU99	R	005	-	-	15324681 - INACTIVE	990005	HGH	CMP	JA
23AU99	R	006	-	-	15324946 - RELEASED	990005	HGH	CMP	JA
13DE00	R	007	-	-	ALL ACTIVE PARTS - 27.85 +0.15/-0.3 WAS 27.85 ±0.15, 18.05 +0.15/-0.3 WAS 18.05 ±0.15 & 11.65 +0.15/-0.5 WAS 11.65 ±0.15	205197	JGR	EOV	RC
29JA01	R	008	-	-	15324946 - REV LEVEL UPDATED	206389	JGR	JGR	RC
20FE04	R	09	-	-	15324945 AND 12146595 CONNECTORS UPDATED PER CDR #2558	252212	MJM	MJM	MR
21FE06	R	10	-	-	12161107 - INACTIVE	277610	JTZ	FRG	MEF
11AU06	R	11	-	-	15324681 - OBSOLETE	283318	JTZ	FRG	MEF



HOUSING THICKNESS OF 1.7 NOMINAL APPROVED FOR SATURN

DIRECTION OF SOCKET INSERTION



ACTUAL SIZE

- NOTES
- UNLESS OTHERWISE SPECIFIED AND/OR INDICATED:  
DIMENSIONS ARE TO FACE OF VIEW SHOWN AND AUTOMATICALLY ROUNDED BY COMPUTER FOR INSPECTION (SEE MATH MODEL FOR PRECISE DIMENSIONS). FOR ALL OTHER DIMENSIONS NOT SHOWN BUT REQUIRED FOR TOOL BUILD, SEE MATH MODEL FOR PRECISE TOOL PATH DATA.
  - THIS PART IS NOT CONTROLLED FOR AUTOMATIC FEEDING.
  - THIS PART ACCEPTS THE FOLLOWING COMPONENTS OR EQUIVALENT:  
TERMINAL 12124471  
TERMINAL POSITION ASSURANCE LOCK 12110054
  - REFERENCE MATING COMPONENTS OR EQUIVALENT:  
CABLE SEAL 12048442
  - SEALING CODE 1 - DESIGN HAS LIMITED SEALING CAPABILITY.

- PROCESS NOTES
- ADD ONE LINE OF GLUE PM 3537-002 (LOCTITE 414) TO EACH LOCATION BETWEEN SEAL AND LAMP SOCKET.
  - OPTIONAL GLUE (S):PM3543-001 (LOCTITE 416).
  - REFERENCE VPS# B-58: W2 LAMP SOCKET:SEAL ADHESION.

15324946	003	-		15324945	
15324681	001	AC	OBSOLETE	15324680	
12161107	01	AA	INACTIVE	12146595	1,2,3
12110053	011	-		12146595	
PART NO	REV	N/P	STATUS	LAMP SOCKET NUMBER	PROCESS NOTES

DIMENSIONAL RANGE (MM)		CHART ET	
FROM	TO	>20	>300
>0	>20	>30	>100
>20	>30	>70	>150
>30	>70	>100	>200
>70	>100	>150	>250
>100	>150	>200	>300
>150	>200	>250	>400

TOLERANCE UNLESS OTHERWISE SPECIFIED  
 ±0.15 | ±0.2 | ±0.3 | ±0.4 | ±0.5 | ±0.6 | ±0.8 | ±1 | ±1.2  
 ANGULAR TOLERANCE ±2°

DWG TYPE		PART DRAWING	
STYLE		DISTR CODE	D
VOLUME (QTY)			
UNLESS OTHERWISE SPECIFIED			
THIS DOCUMENT IS IN ACCORDANCE WITH ASME Y14.5M-1994 AS AMENDED BY THE 3M GLOBAL DIMENSIONING AND TOLERANCING ADDENDUM-2001. SEPARATE PATTERNS OF FEATURES MAY BE OMBG SEPARATELY REGARDLESS OF DATUM REFERENCES.			
ALL DIMENSIONS ARE IN MILLIMETERS			
REFERENCE			
THIRD ANGLE PROJECTION	DO NOT SCALE	UNIGRAPHICS	
USE MATH DATA			

**DELPHI**  
 DELPHI PACKARD ELECTRIC SYSTEMS  
 WARREN, OH

DR	DATE
APVD1 H. GAMA	23AU99
APVD2 C. MIRANDA	23AU99
APVD3 J. ALVAREZ	23AU99
APVD4	
APVD5	

SUBSTANCES OF CONCERN AND RECYCLED CONTENT PER DELPHI 10949001

MATERIAL SEE DWG

DRAWING NAME  
 TAXI ASM CONN F LP SOC WEDGE SLD W2

DRAWING NUMBER  
 15324684

SIZE	SCALE	FRAME NO	SHEET NO	STG	REV	N/P
A1	2:1	1 OF 1	1 OF 1	R	11	-