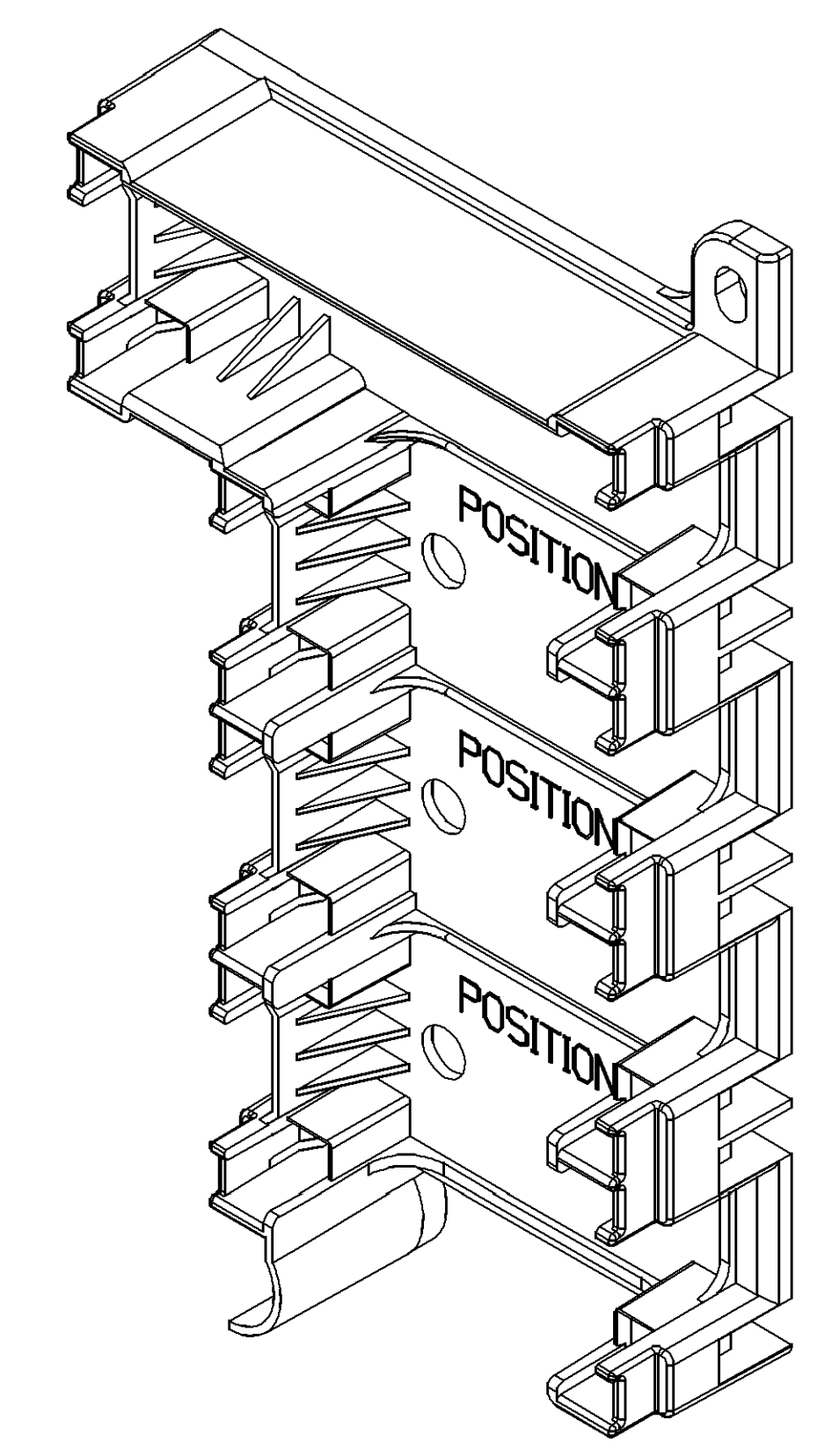
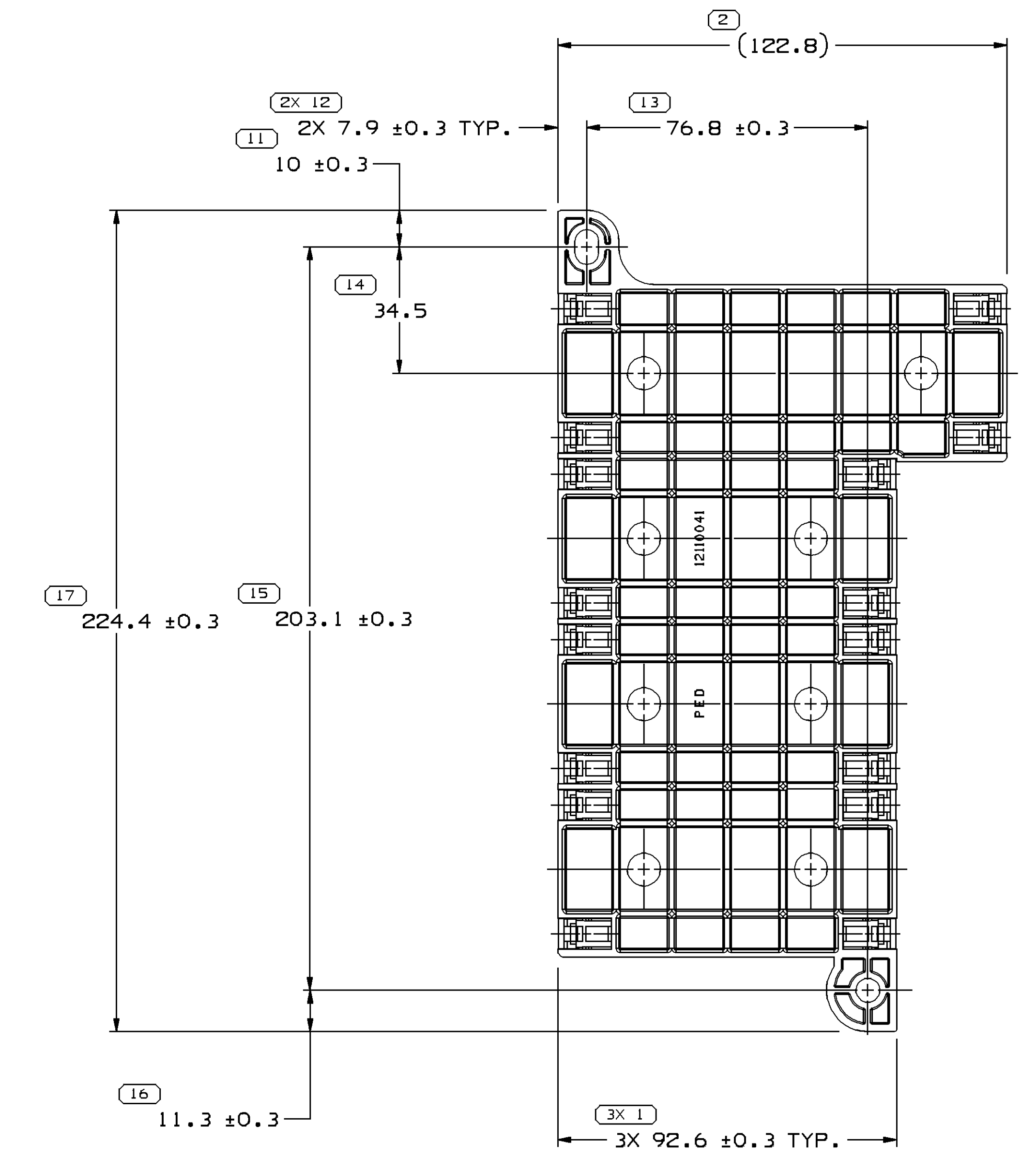
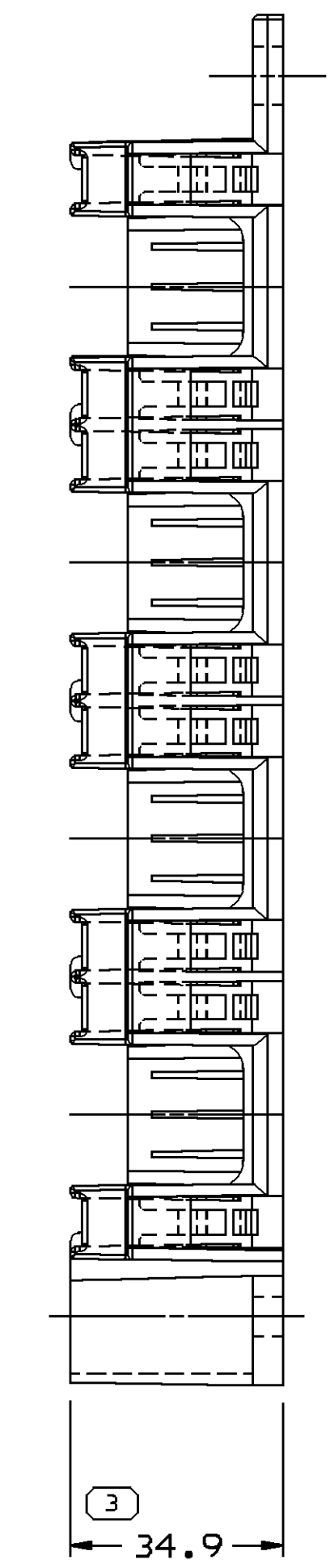
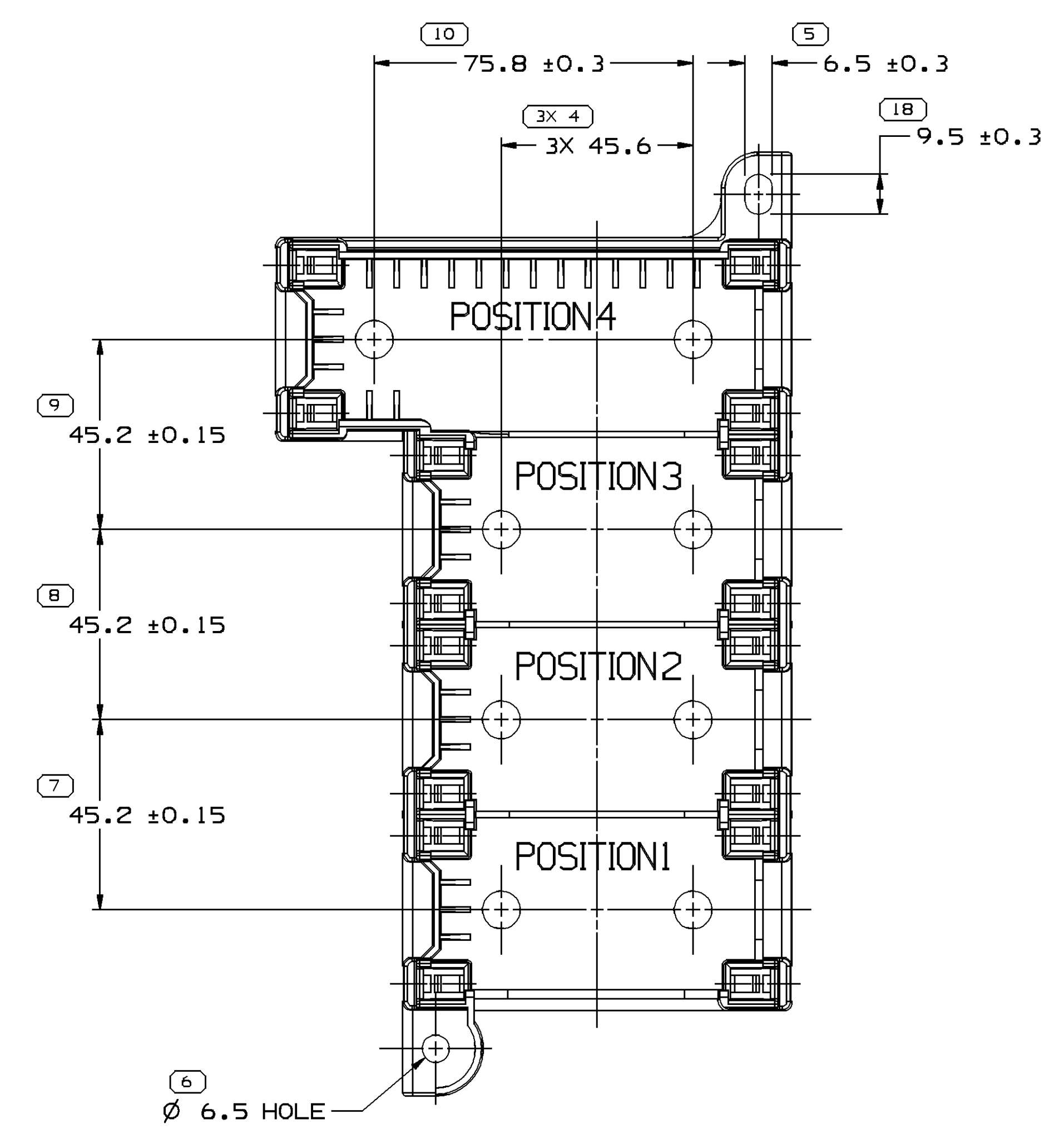


SYMBOL DEFINITION		TOTAL NO OF INSPECTIONS REQUIRED		MISSING SYMBOLS	
A DIMENSION WITHOUT AN INSPECTION REPORT SYMBOL DOES NOT REQUIRE INSPECTION. IT MAY BE CONTROLLED ON THE INDIVIDUAL COMPONENT DRAWING.		23		NO MISSING SYMBOL NUMBER	
LAST NO. USED		18			

DWG STATUS						REVISION HISTORY			AUTH		DR		AP/VD	
DATE	STG	REV	N/P	CHG	ZONE									
07MR90	R	D1	-	-		WAS PE026005 AND RELEASED			900005	CDH	CDH	1		
10MY90	R	E	-	-		ADDED NOTE *6 & REVISED GRAPHICS			134460	ATL	ATL	2		
31OC90	R	F	-	-		REVISED			137538	SC	SC	3		
01DE90	R	0	-	-		REVISED GRAPHICS			138261	BAR	BAR	4		
31JL08	R	02	-	-		REDRAWN & UPDATED MAT'L CALLOUT			405611	LMC	SCR/AEC	5		



NOTES

- UNLESS OTHERWISE SPECIFIED AND/OR INDICATED:  
DIMENSIONS ARE TO FACE OF VIEW SHOWN AND AUTOMATICALLY ROUNDED BY COMPUTER FOR INSPECTION (SEE MATH MODEL FOR PRECISE DIMENSIONS). FOR ALL OTHER DIMENSIONS NOT SHOWN BUT REQUIRED FOR TOOL BUILD, SEE MATH MODEL FOR PRECISE TOOL PATH DATA.
- MATERIAL RECYCLING CODE PER ISO 11469. (2.3)X(0.1) CHARACTERS AS SHOWN TO BE LOCATED ON ANY EXTERIOR SURFACE. OPTIONAL CONSTRUCTION TO BE NO MATERIAL RECYCLING CODE.
- THIS PRODUCT IS NOT CATEGORIZED AS AN APPEARANCE ITEM, MINOR IMPERFECTIONS INCLUDING, BUT NOT LIMITED TO, FLOW MARKS, COLOR BLEMISHES, GATE VESTIGE, AND SOFT FLASH THAT DO NOT AFFECT THE FIT, FORM, OR FUNCTION OF THE PART ARE PERMISSIBLE PER NAP 4.10-18.
- THIS PART ACCEPTS THE FOLLOWING COMPONENTS OR EQUIVALENT:  
MICRO - RELAY CONVENIENCE CENTER 12077571.  
MINI - FUSE CONVENIENCE CENTER 12092506.  
MINI - RELAY CONVENIENCE CENTER 12077574.
- (2.3)X(0.1) DELPHI CORPORATE BRAND TO BE LOCATED ON ANY EXTERIOR SURFACE, PREFERABLY VISIBLE AT FINAL ASSEMBLY. OPTIONAL CONSTRUCTION FOR EXISTING TOOLING MAY BE "PED", OR NO LOGO.
- SEALING CODE 0.
- LOCK DEVICES INTO CONVENIENCE CENTER BEFORE LOCKING CONVENIENCE CENTER INTO BASE.

DWG TYPE PART DRAWING		DISTR CODE D	
VOLUME 1041 93,829		UNLESS OTHERWISE SPECIFIED THIS DOCUMENT IS IN ACCORDANCE WITH ASME Y14.5M-1994 AS MODIFIED BY THE IN-SITU DIMENSIONING AND TOLERANCING ADDENDUM-0011. SEPARATE WRITINGS OR FEATURES MAY BE BASED SEPARATELY PER HOLDER OF DRAWING REFERENCES.	
ALL DIMENSIONS ARE IN MILLIMETERS		THIRD ANGLE PROJECTION	
DO NOT SCALE		USE MATH DATA	
DIMENSIONAL RANGE (MM)		SHORT ET	
FROM	> 0	> 30	> 70
TO	20	70	100
TOLERANCE UNLESS OTHERWISE SPECIFIED		TOLERANCE UNLESS OTHERWISE SPECIFIED	
±0.15	±0.2	±0.3	±0.4
±0.5	±0.6	±0.8	±1.0
ANGULAR TOLERANCE 30'		ANGULAR TOLERANCE 30'	

**DELPHI**  
DELPHI PACKARD ELECTRICAL/ELECTRONIC ARCHITECTURE  
WARREN, OH

DR	DATE
APV01 CRAIG D. HOOPES	07MR90
APV02 CRAIG D. HOOPES	07MR90
APV03 J.P. LITTLEFIELD	26MR90
APV04	
APV05	

THIS DOCUMENT IS IN ACCORDANCE WITH ASME Y14.5M-1994 AS MODIFIED BY THE IN-SITU DIMENSIONING AND TOLERANCING ADDENDUM-0011. SEPARATE WRITINGS OR FEATURES MAY BE BASED SEPARATELY PER HOLDER OF DRAWING REFERENCES.

ALL DIMENSIONS ARE IN MILLIMETERS

THIRD ANGLE PROJECTION

DO NOT SCALE

USE MATH DATA

(17) PROCESS SENSITIVE DIMENSION

DIMENSIONS ENCLOSED IN ( ) INDICATE REFERENCE DIMENSIONS AND NO TOLERANCE LIMITS ARE ESTABLISHED

DRAWING NAME  
COV MODULE

DRAWING NUMBER  
12110041

SCALE 1:1

FRAME NO 1 OF 1

SHEET NO 1 OF 1

STG REV N/P

R 02 -