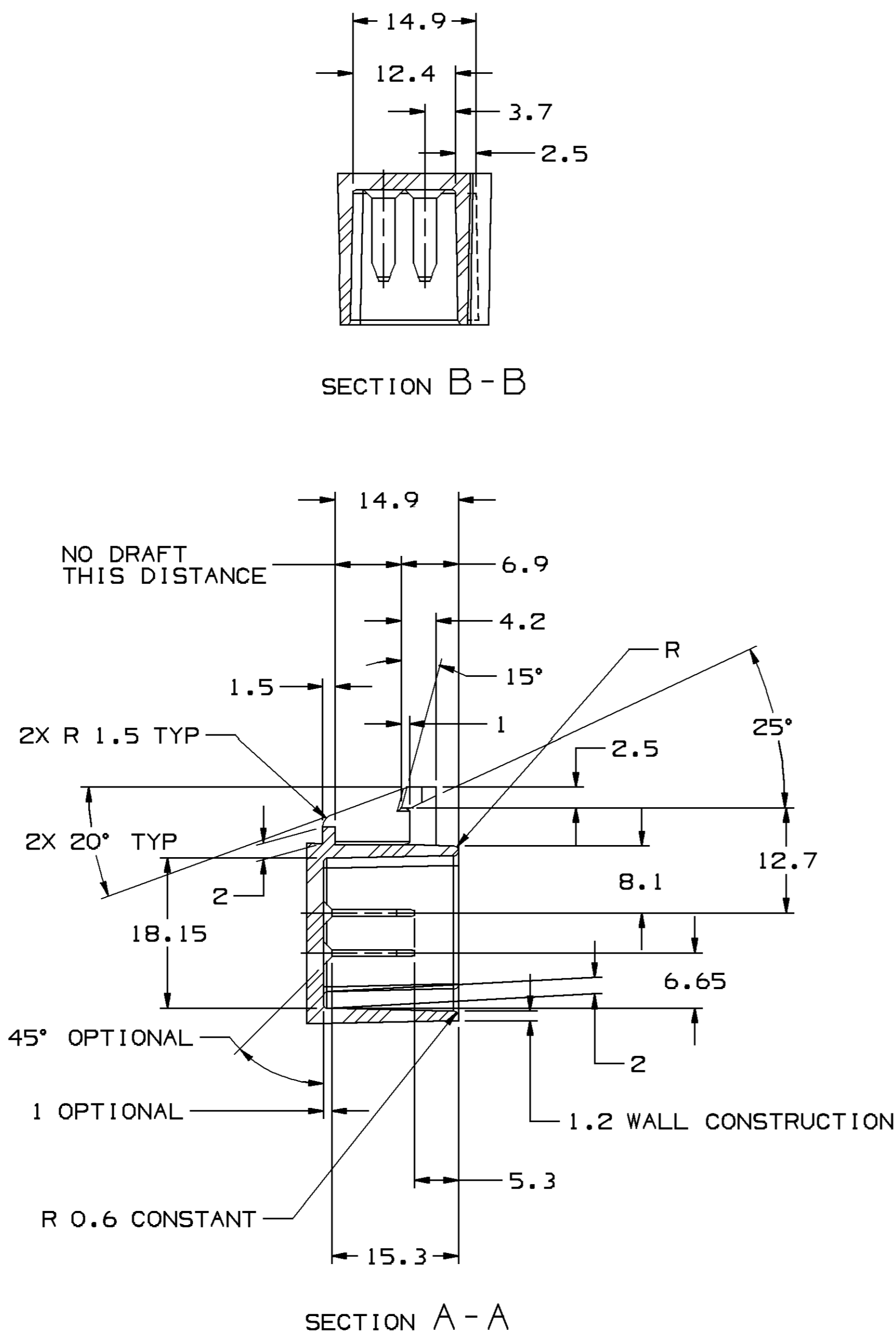
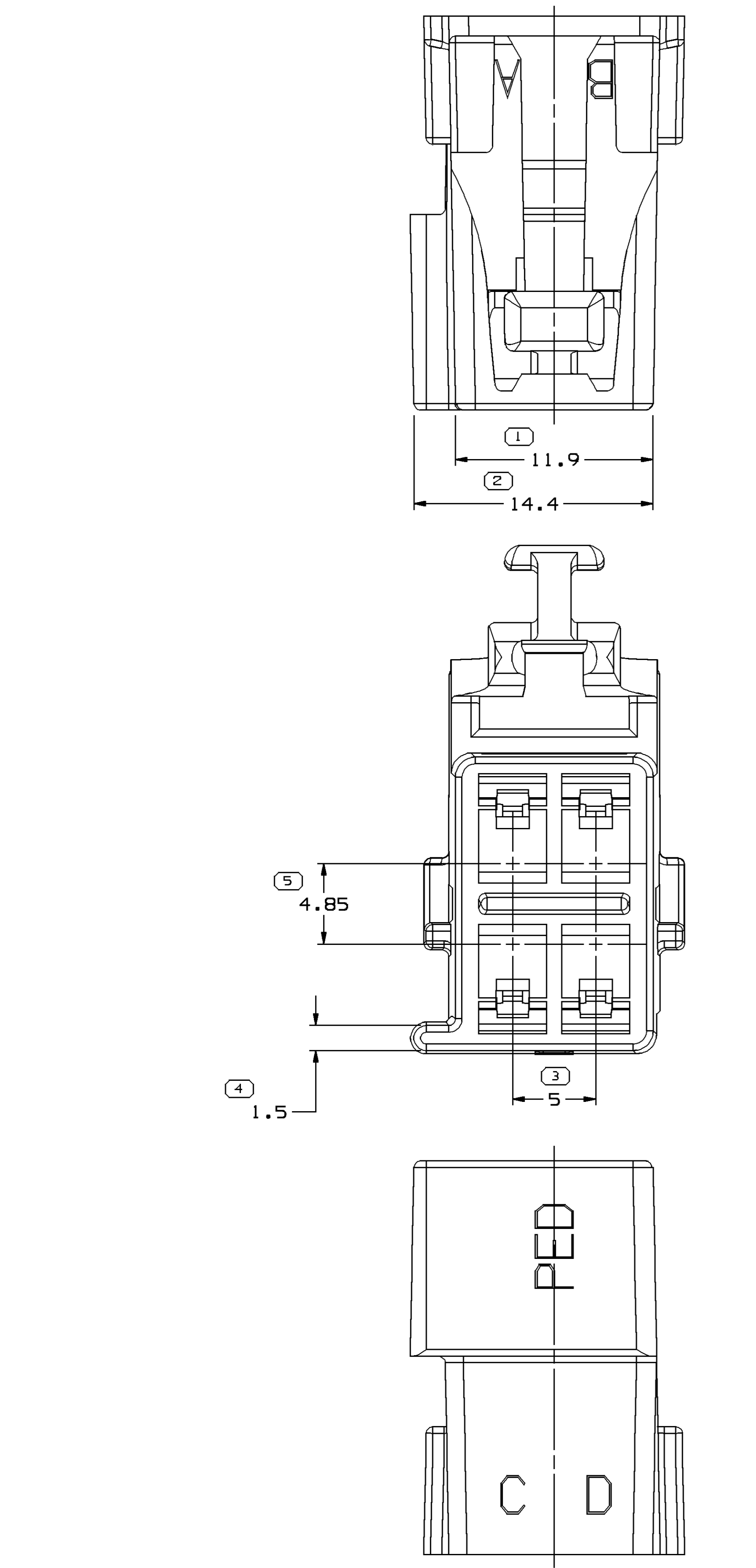


**MATERIAL SPECIFICATIONS**

RECOMMENDED  
 BASE METAL - CDA-210, GILDING, EXTRA SPRING TEMPER  
 PLATING - 0.0050±0.0025 MM THICK TIN

MINIMUMS  
 ELECTRICAL CONDUCTIVITY - ≥ 20% IACS AT 20°C. USE OF A MATERIAL WITH CONDUCTIVITY < 20% IACS MUST BE APPROVED BY PACKARD ELECTRIC MATERIALS ENGINEERING.  
 TENSILE STRENGTH - 407 MPa  
 PLATING - FOR LOW ENERGY (≤ 5V) AND NON-PASSENGER COMPARTMENT POWER CIRCUITS, 0.0050±0.0025 MM THICK TIN. FOR MATERIALS CONTAINING 10% OR MORE ZINC, AN UNDERPLATE OF COPPER 0.0050±0.0025 MM THICK IS REQUIRED.

**MATING BLADE INFORMATION**  
 SCALE 8:1



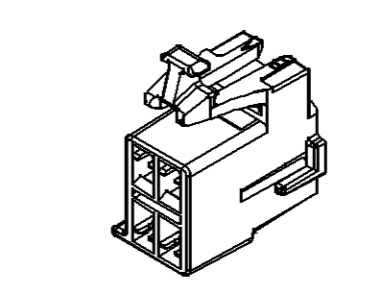
**MATING CONNECTOR INFORMATION**  
 SCALE 2:1

- NOTES:**
- UNLESS OTHERWISE SPECIFIED AND/OR INDICATED:  
 DIMENSIONS ARE TO FACE OF VIEW SHOWN AND AUTOMATICALLY ROUNDED BY COMPUTER FOR INSPECTION. (SEE MATH MODEL FOR PRECISE DIMENSIONS). FOR ALL OTHER DIMENSIONS NOT SHOWN BUT REQUIRED FOR TOOL BUILD, SEE MATH MODEL FOR PRECISE TOOL PATH DATA. ALL RADII 0.4  
 DRAFT IS 1° ON ALL OUTSIDE SURFACES
  - RECOMMENDED MATERIAL - GLASS FILLED NYLON OR POLYESTER.
  - WHEN USING THIS INFORMATION FOR A NEW DESIGN, REQUEST THE LATEST COPY OF THIS PRINT FROM DELPHI-P.

- NOTES:**
- UNLESS OTHERWISE SPECIFIED AND/OR INDICATED:  
 DIMENSIONS ARE TO FACE OF VIEW SHOWN AND AUTOMATICALLY ROUNDED BY COMPUTER FOR INSPECTION. (SEE MATH MODEL FOR PRECISE DIMENSIONS). FOR ALL OTHER DIMENSIONS NOT SHOWN BUT REQUIRED FOR TOOL BUILD, SEE MATH MODEL FOR PRECISE TOOL PATH DATA.
  - MATERIAL RECYCLING CODE PER ISO 11469. (2,3)X(0,1) RAISED CHARACTERS AS SHOWN TO BE LOCATED ON ANY EXTERIOR SURFACE. OPTIONAL CONSTRUCTION TO BE NO MATERIAL RECYCLING CODE.
  - REFERENCE MATING COMPONENTS OR EQUIVALENT:  
 CONNECTOR 12129135
  - THIS PART ACCEPTS THE FOLLOWING COMPONENTS OR EQUIVALENT:  
 TERMINAL 12110844  
 MAX INSULATION CRIMP MUST BE LESS THAN 3.6 HIGH AND 4 WIDE.  
 SECONDARY TERMINAL LOCK 12129138  
 MAX CABLE O.D. 3.4  
 CONNECTOR POSITION ASSURANCE LOCK 12052834
  - (2,3)X(0,1) RAISED DELPHI CORPORATE BRAND TO BE LOCATED ON ANY EXTERIOR SURFACE, PREFERABLY VISIBLE AT FINAL ASSEMBLY. OPTIONAL CONSTRUCTION TO BE "PED" OR NO LOGO.

SYMBOL DEFINITION		TOTAL NO OF INSPECTIONS REQUIRED	MISSING SYMBOLS
A DIMENSION WITHOUT AN INSPECTION REPORT SYMBOL DOES NOT REQUIRE INSPECTION. IT MAY BE CONTROLLED ON THE INDIVIDUAL COMPONENT DRAWING.		10	NO MISSING SYMBOL NUMBER
		LAST NO. USED	10

DWG STATUS		ZONE		REVISION HISTORY		AUTH	DR	AP/VD
DATE	STG	REV	N/P	CHG				
23SE03	R	01	-	-	15479020	RELEASED	246011	TLD/WLM
23SE03	R	02	-	-	12129136	WAS SEPARATE DWG	246018	TLD/WLM
14SE05	R	03	-	-	15479020	- MAT'L SPEC WAS M3592002	272264	MDH/AUG/EST
12MR07	R	04	-	-	15479020	- OBSOLETE	400766	JBD/JAA/JES



(N/A) PROCESS SENSITIVE DIMENSION		THIRD ANGLE PROJECTION		DO NOT SCALE	
DIMENSIONS ENCLOSED IN ( ) INDICATE REFERENCE DIMENSIONS AND NO TOLERANCE LIMITS ARE ESTABLISHED		USE MATH DATA		UNIMPHIS	
DIMENSIONAL RANGE (MM)	CHART	SCALE		FRAME NO	
FROM 0	> 20	> 30	> 70	> 100	
TO 25	30	75	100	> 100	
TOLERANCE UNLESS OTHERWISE SPECIFIED		FRAME NO		SHEET NO	
±0.15 ±0.2 ±0.3 ±0.4 ±0.5		1 OF 1		1 OF 1	
ANGULAR TOLERANCE ±2°		SCALE		FRAME NO	
		5:1		1 OF 1	

**DELPHI**  
 DELPHI PACKARD ELECTRICAL/ELECTRONIC ARCHITECTURE  
 WYOMING, OH

DR	DATE
AP/VD1 TERRI DAVIS	23SE03
AP/VD2 TERRI DAVIS	23SE03
AP/VD3 WILLIAM MEASE	24SE03
AP/VD4	
AP/VD5	

UNLESS OTHERWISE SPECIFIED  
 THIS DOCUMENT IS IN ACCORDANCE WITH ASME Y14.5M-1994  
 AS MODIFIED BY THE IN-SITU DIMENSIONING AND  
 TOLERANCE ADDENDUMS. SEPARATE MATING OR  
 FEATURES MAY BE DIMED SEPARATELY PER RELEASE OF DATUM  
 REFERENCES.

ALL DIMENSIONS ARE IN MILLIMETERS

REFERENCE

DRAWING NAME  
 TAXI CONN F M/P 280 FLXLK

DRAWING NUMBER  
 15479019

SIZE A0 SCALE 5:1 FRAME NO 1 OF 1 SHEET NO 1 OF 1 REV N/P

PART NO	REV	N/P	STATUS	MATERIAL SPECIFICATION AND COLOR
15479020	02	AA	OBSOLETE	M3592024 PA66 HS IM CRM
12129136	C5	-	-	M3592001 PA66 HS IM BLK