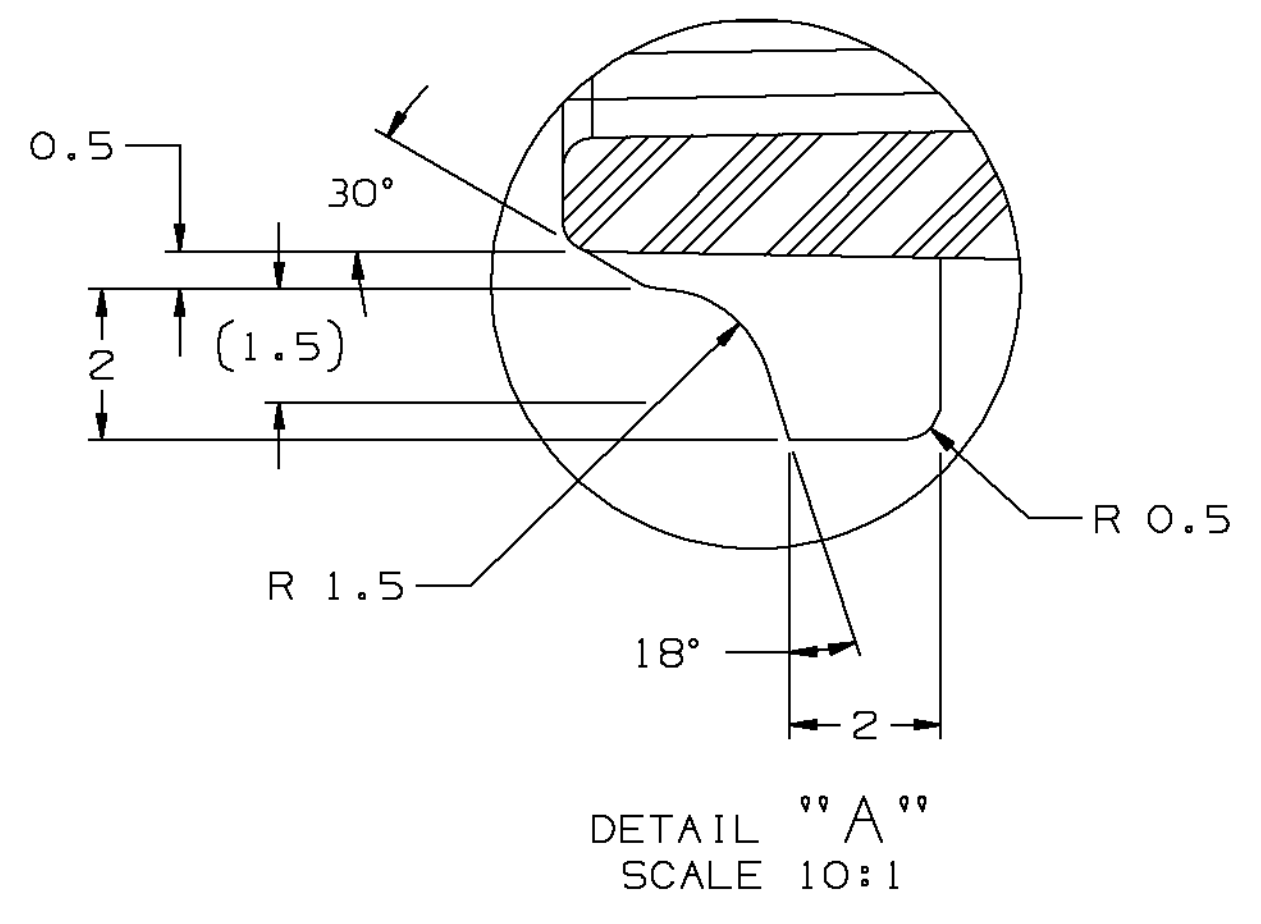
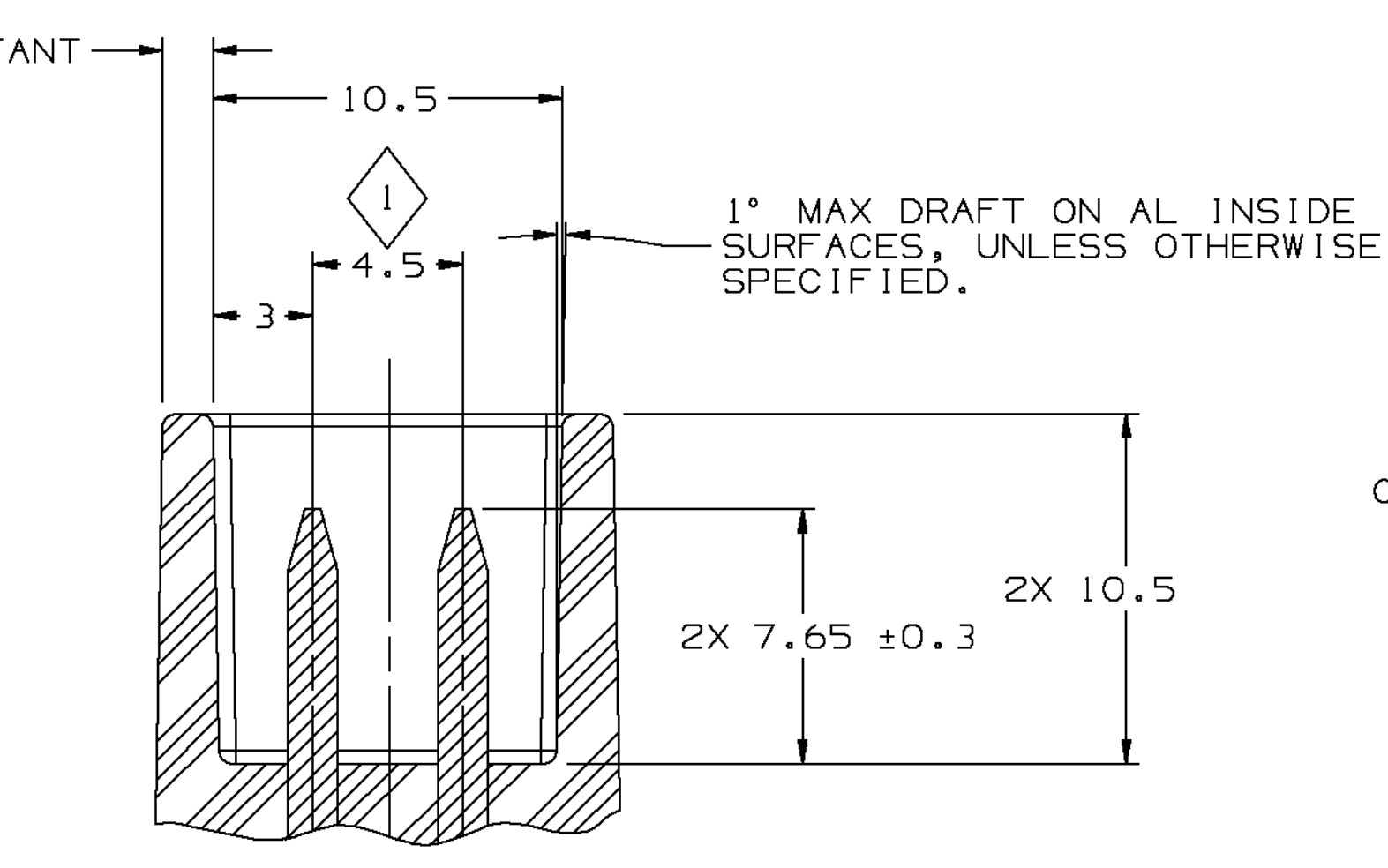
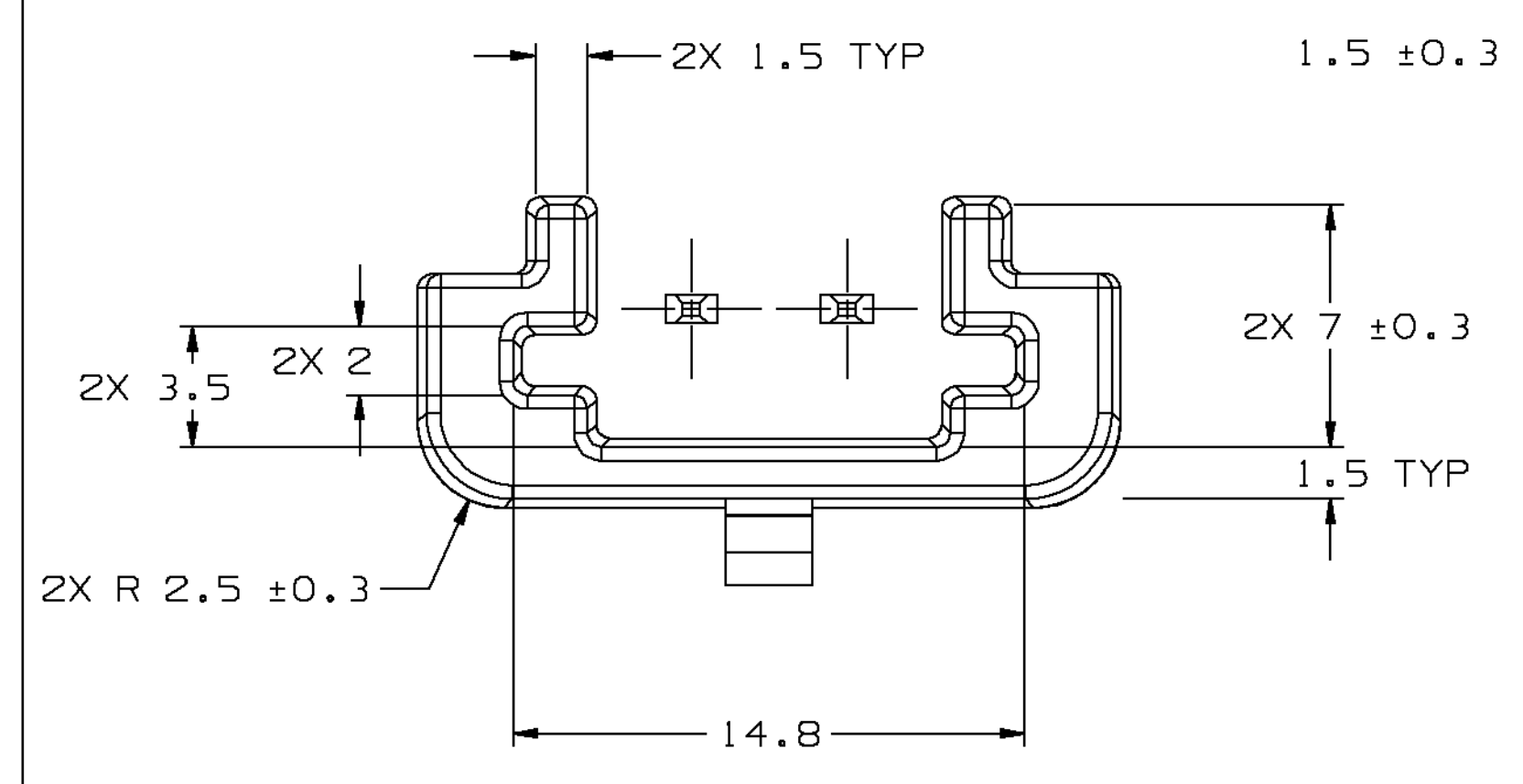
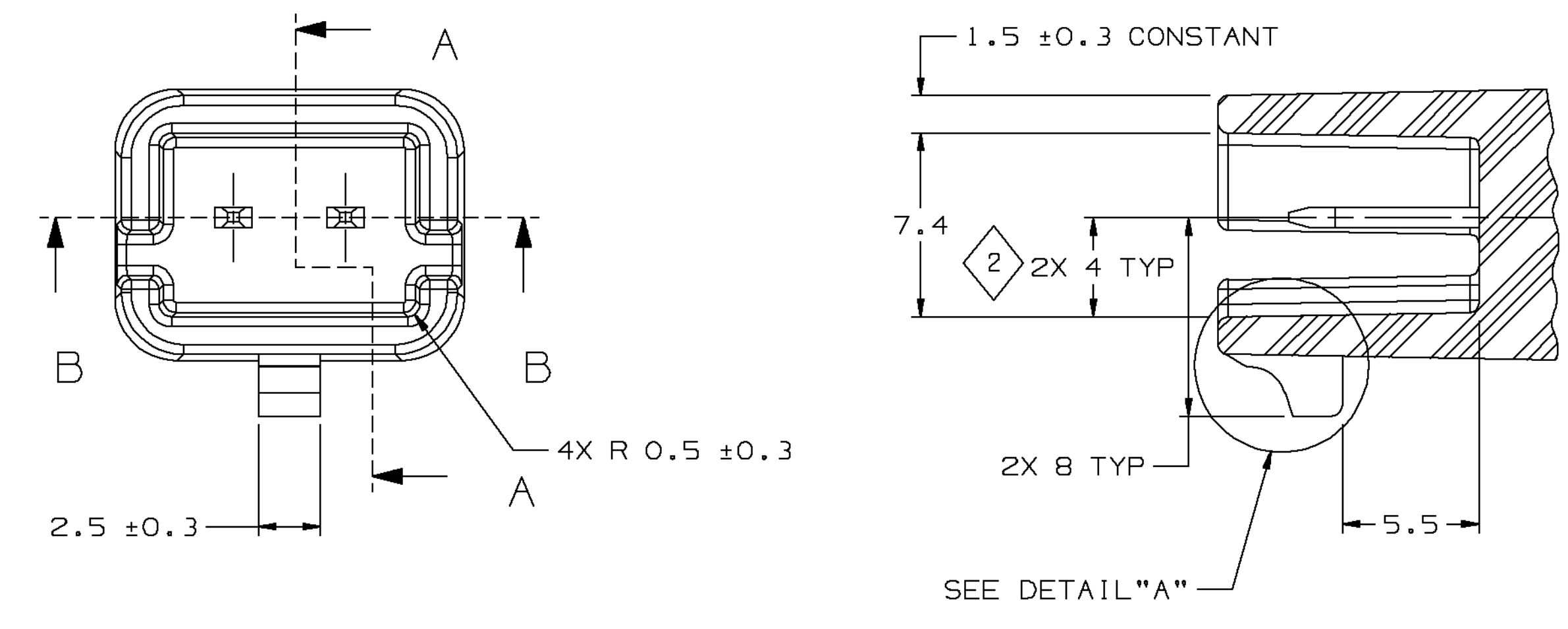
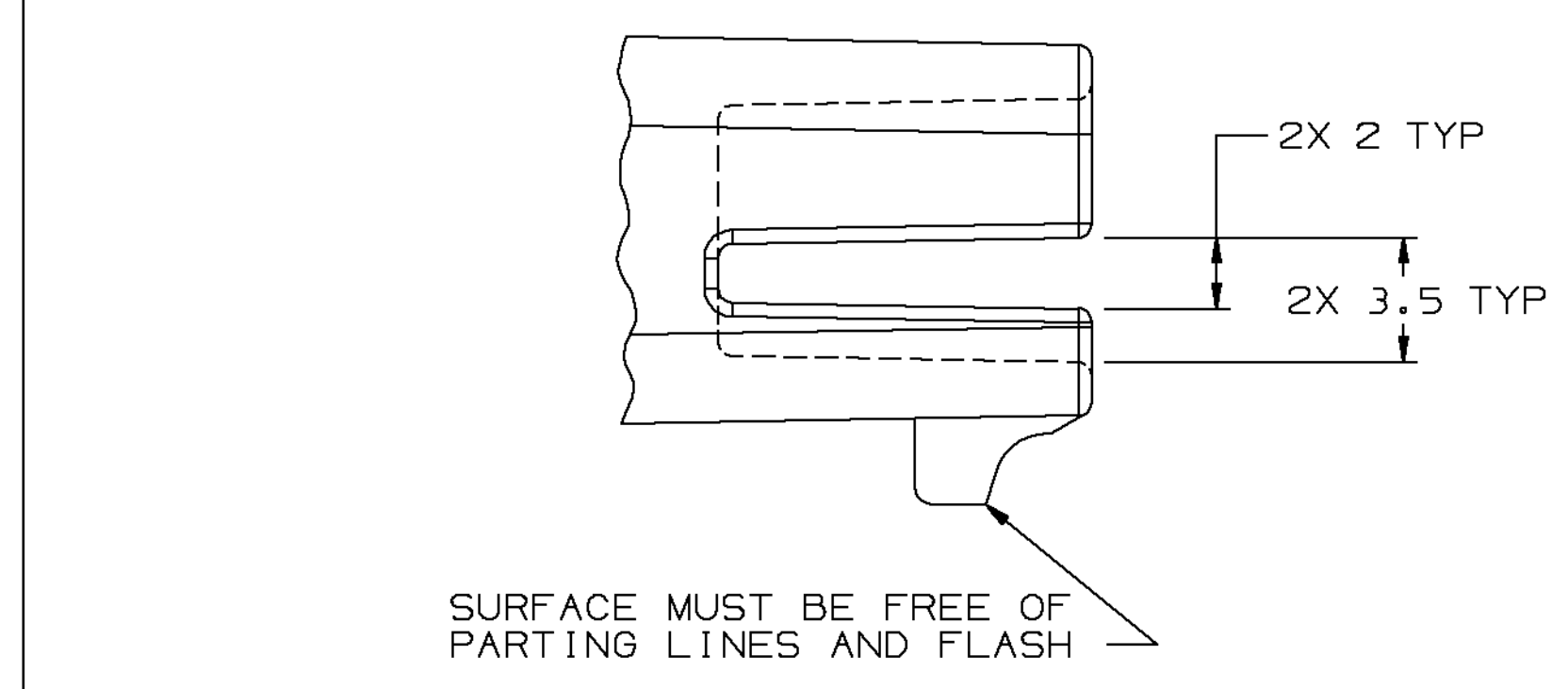
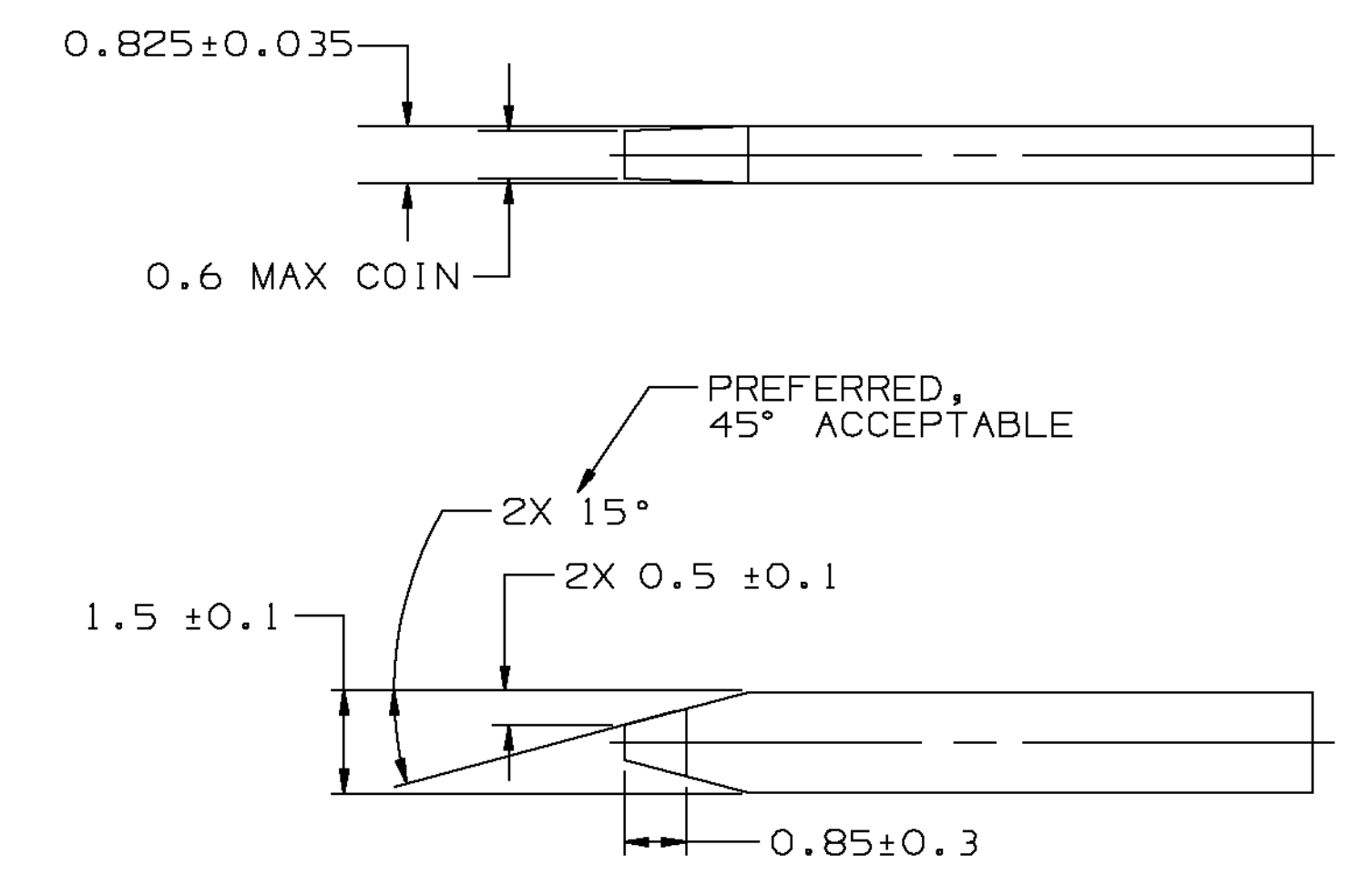


KEY PRODUCT CHARACTERISTIC SYMBOLS (Ⓢ, Ⓣ) INDICATE PRODUCT CHARACTERISTICS THAT REQUIRE SPECIAL CARE, DOCUMENTATION, AND ACCEPTANCE CRITERIA PER GM 1805 QN AND DELPHI PACKARD ELECTRIC SYSTEMS PROCEDURES.

KEY PRODUCT CHARACTERISTICS	
Ⓢ SAFETY/COMPLIANCE	Ⓣ FIT/FUNCTION
TOTAL ON DRAWING	2
LAST NUMBER USED	2

SYMBOL DEFINITION		TOTAL NO OF INSPECTIONS REQUIRED	
A DIMENSION WITHOUT AN INSPECTION REPORT SYMBOL DOES NOT REQUIRE INSPECTION. IT MAY BE CONTROLLED ON THE INDIVIDUAL COMPONENT DRAWING.	11	LAST NO. USED	9

DWG STATUS				REVISION HISTORY				AUTH		
DATE	STG	REV	CHKD/N/P	ZONE	DATE	BY	REASON	DR	CK	APVD
17JUL01	R	E3	-	-			REDRAWN TO PD	Z11942	RVP	OMC



MATERIAL SPECIFICATIONS

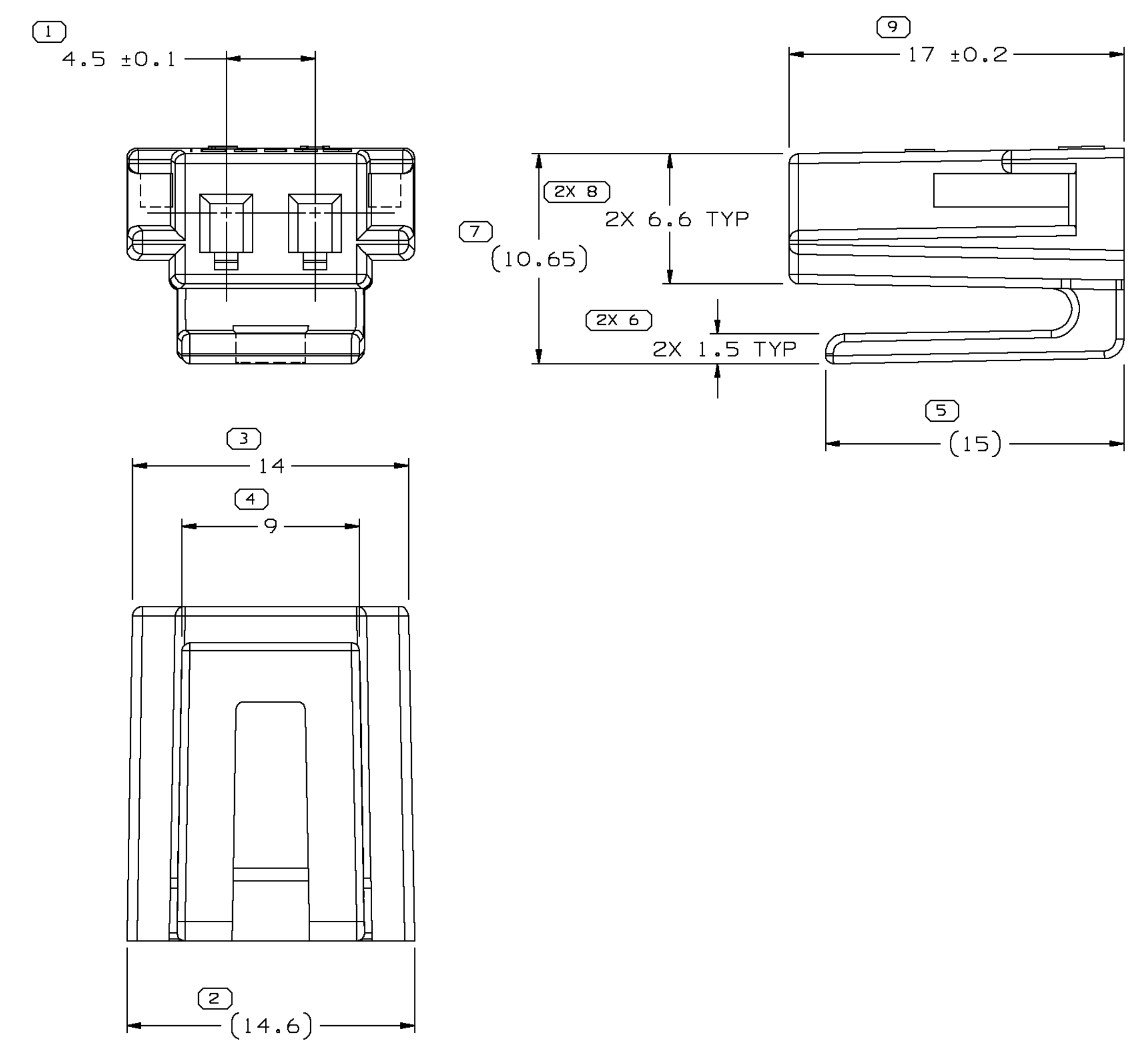
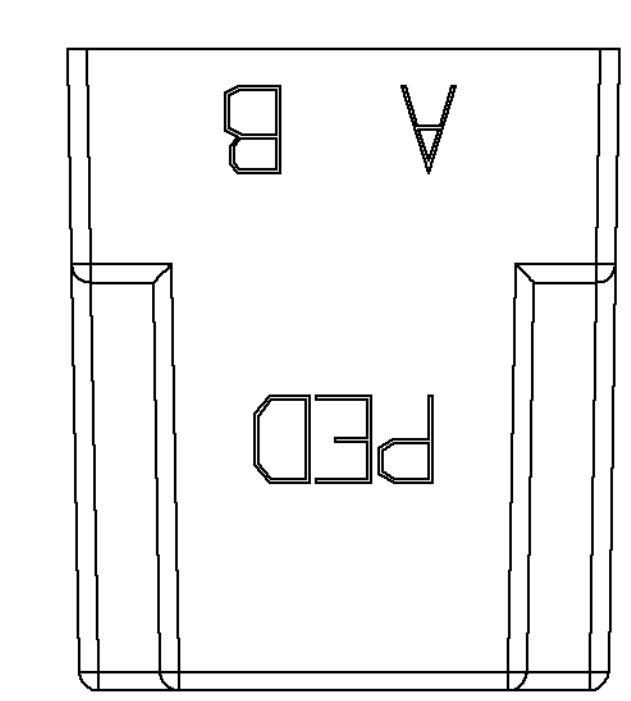
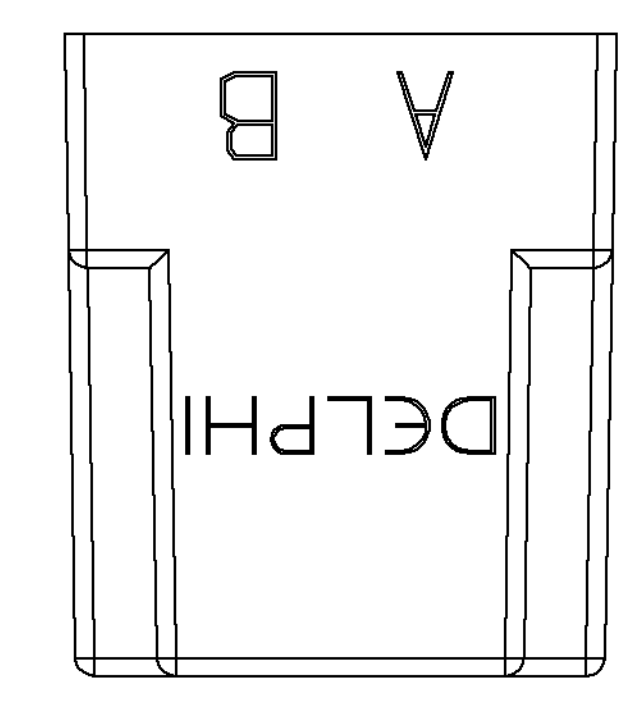
RECOMMENDED
 BASE METAL - CDA-210, EXTRA SPRING TEMPER
 • TIN PLATING (WHERE APPLICABLE TO 125°C MAX CONTINUOUS USAGE): 0.004 ±0.001 MM ELECTROPLATED TIN.
 • USAGE OF PLATING TYPES OTHER THAN RECOMMENDED MUST BE APPROVED BY DELPHI PACKARD ELECTRIC SYSTEMS ENGINEERING.

MINIMUMS
 ELECTRICAL CONDUCTIVITY - ≥28% IACS AT 20 °C. USE OF A MATERIAL WITH CONDUCTIVITY <28% IACS MUST BE APPROVED BY PACKARD ELECTRIC MATERIALS ENGINEERING.
 TENSILE STRENGTH - 430 - 480 MPa
 UNDERPLATING FOR TIN PLATING - FOR BASE MATERIALS CONTAINING 10% OR MORE ZINC, AN UNDERPLATE OF COPPER 0.0025 MM (100 >IN) MINIMUM THICK IS REQUIRED.
 PROCESSING LUBRICANT - ANY PROCESSING LUBRICANT REMAINING ON TERMINALS MUST NOT VARNISH OR DEGRADE THE ELECTRICAL PERFORMANCE OF THE CONNECTION UP TO A MAXIMUM TEMPERATURE OF 150°C. PROCESSING LUBRICANTS MUST BE APPROVED BY DELPHI PACKARD ELECTRIC SYSTEMS ENGINEERING.

MATING BLADE INFORMATION

MATING CONNECTOR INFORMATION

- NOTES
- UNLESS OTHERWISE SPECIFIED AND/OR INDICATED: DIMENSIONS ARE TO FACE OF VIEW SHOWN AND AUTOMATICALLY ROUNDED BY COMPUTER FOR INSPECTION (SEE MATH MODEL FOR PRECISE DIMENSIONS). FOR ALL OTHER DIMENSIONS NOT SHOWN BUT REQUIRED FOR TOOL BUILD, SEE MATH MODEL FOR PRECISE TOOL PATH DATA. ALL RADII 0.4 DRAFT IS 1° ON ALL OUTSIDE SURFACES
 - KEY PRODUCT CHARACTERISTIC SYMBOLS (Ⓢ, Ⓣ) INDICATE PRODUCT CHARACTERISTICS THAT REQUIRE SPECIAL CARE, DOCUMENTATION, AND ACCEPTANCE CRITERIA PER GM TARGETS FOR EXCELLENCE.
 - RECOMMENDED MATERIAL: GLASS REINFORCED NYLON OR POLYESTER



- NOTES
- UNLESS OTHERWISE SPECIFIED AND/OR INDICATED: DIMENSIONS ARE TO FACE OF VIEW SHOWN AND AUTOMATICALLY ROUNDED BY COMPUTER FOR INSPECTION (SEE MATH MODEL FOR PRECISE DIMENSIONS). FOR ALL OTHER DIMENSIONS NOT SHOWN BUT REQUIRED FOR TOOL BUILD, SEE MATH MODEL FOR PRECISE TOOL PATH DATA.
 - MATING COMPONENTS OR EQUIVALENT: MODULE - AC-#25115147 RF1
 - THIS PART ACCEPTS THE FOLLOWING COMPONENTS OR EQUIVALENT: CAVITIES TO ACCEPT TERMINAL 12047767 SECONDARY TERMINAL LOCK 12059111

DELPHI Automotive Systems	
MATERIAL SPEC PM0023B7 002 PA12-BLK	
SUBSTANCES OF CONCERN AND RECYCLED CONTENT PER DELPHI-A 10949001	
PART DRAWING	
CODE NUMBER 6900	DWG DATE 26NOB04
OC SPEC	SCALE 5:1
	VOLUME cm³ 1.05B
PART GEOMETRY 3D SOLID	
UNLESS OTHERWISE SPECIFIED: THIS DOCUMENT IS IN ACCORDANCE WITH ASME Y14.5M - 1994 AS AMENDED BY THE GM GLOBAL DIMENSIONING AND TOLERANCING ADDENDUM - 1997. ALL GEOMETRIC TOLERANCES AND RELATED DATUMS APPLY RFS. RULE #1 (PERFECT FORM AT MMC) DOES NOT APPLY WHEN RELATIONSHIP BETWEEN FEATURES IS ESTABLISHED BY ORIENTATION OR LOCATION TOLERANCES. SEPARATE POSITION CALLOUTS MAY BE GAGED SEPARATELY REGARDLESS OF DATUM REFERENCES.	
COPY OF MATH DATA DO NOT SCALE	REFERENCE
	DR
	DATE
	APVD1 L. TURKSON 12JLB5
	APVD2 A. SWARTZ 020CB5
	APVD3 J. METZGER 300CB5
	APVD4
	APVD5
METRIC UNLESS OTHERWISE SPECIFIED, ALL DIMENSIONS ARE IN MILLIMETERS	
THIRD ANGLE PROJECTION	DRAWING NAME CONN 2F M/P 150

DIMENSIONAL RANGE (MM)		CHART E1	
FROM	TO	FROM	TO
0	> 20	> 20	> 100
> 20	> 30	> 100	> 200
> 30	> 40	> 200	> 300
> 40	> 50	> 300	> 400
TOLERANCE UNLESS OTHERWISE SPECIFIED		TOLERANCE UNLESS OTHERWISE SPECIFIED	
±0.15	±0.2	±0.4	±0.5
±0.3	±0.4	±0.6	±0.8
±0.5	±0.6	±1.0	±1.2
ANGULAR TOLERANCE ± 2°			

SHEET NUMBER 1 OF 1	DRAWING NUMBER 12059110	DWG STATUS R E3	SIZE A0
------------------------	----------------------------	--------------------	------------

DELPHI PACKARD ELECTRIC SYSTEMS
WARREN, OHIO 44486