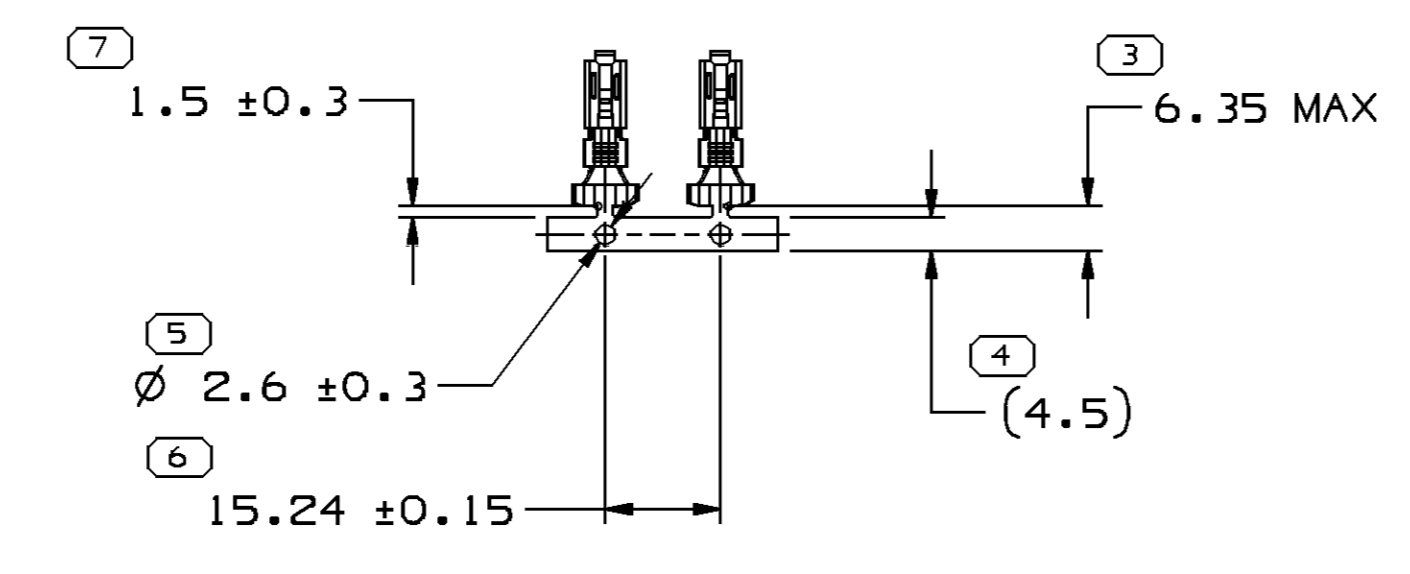
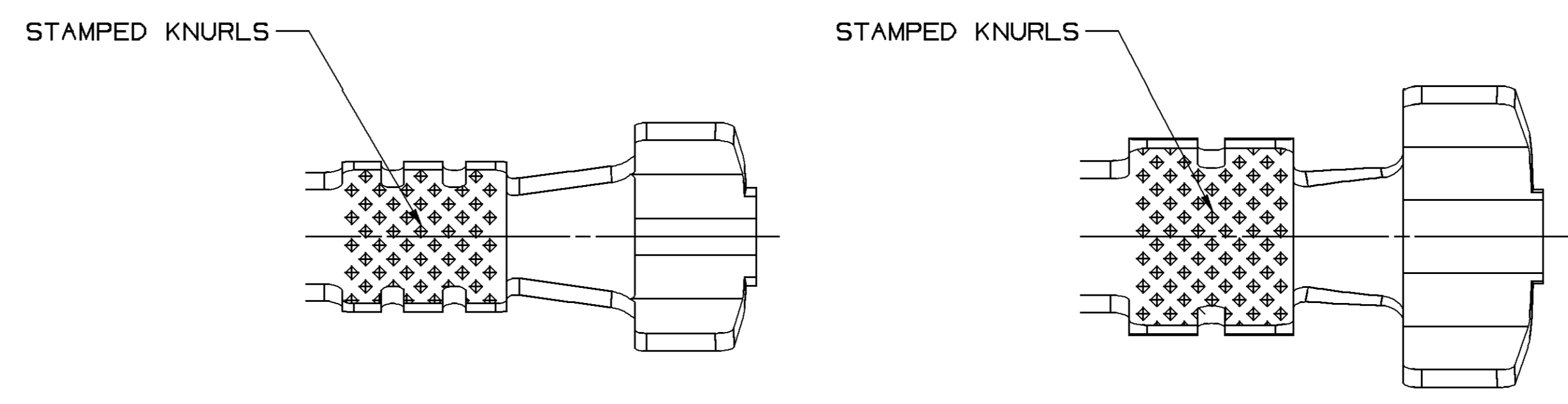


SYMBOL DEFINITION		TOTAL NO OF INSPECTIONS REQUIRED	MISSING SYMBOLS
A DIMENSION WITHOUT AN INSPECTION REPORT SYMBOL DOES NOT REQUIRE INSPECTION. IT MAY BE CONTROLLED ON THE INDIVIDUAL COMPONENT DRAWING.		19	NO MISSING SYMBOL NUMBER
		LAST NO. USED	17

DWG STATUS				ZONE				REVISION HISTORY				AUTH		DR		AP/D	
DATE	STG	REV	N/P	CHG													
02FE04	R	01	-	-				CLEARED REVISION COLUMN: ALL PARTS - REDRAWN TO PD: 12052221 - 2.4 WAS 6.24				250880	ECB	AUG	BDG		
11APOS	R	02	-	-				ALL ACTIVE PARTS - ADDED GRAPHIC OF KNURL FOR TYPE 102 & 103				266714	MDH	JAA	JKM		
19APOS	R	03	-	-				12059243 & 12052221 - CORRECTED DIM "V" WAS 5.4				267480	RTV	JAA	BDG		
21JLOS	R	04	-	-				12015860, 12052219, 12052221, 12084595 AND 12124304 - CREATED NISSAN CUSTOMER PART DRAWING				265749	JBD	FRG	BDG		
21JLOS	R	05	-	-				12084595 - UPDATED PDW ATTRIBUTES AND CREATED FORD CUSTOMER PART DRAWING				269329	JBD	FRG	BDG		
20FE06	R	06	-	-				12124057 & 1205221 - DIM "M" WAS 2.4 & DIM "N" WAS 2.8 AND 12015860 - DIM "M" WAS 2.8 & DIM "N" WAS 2.4				277475	JOA	FRG	BDG		

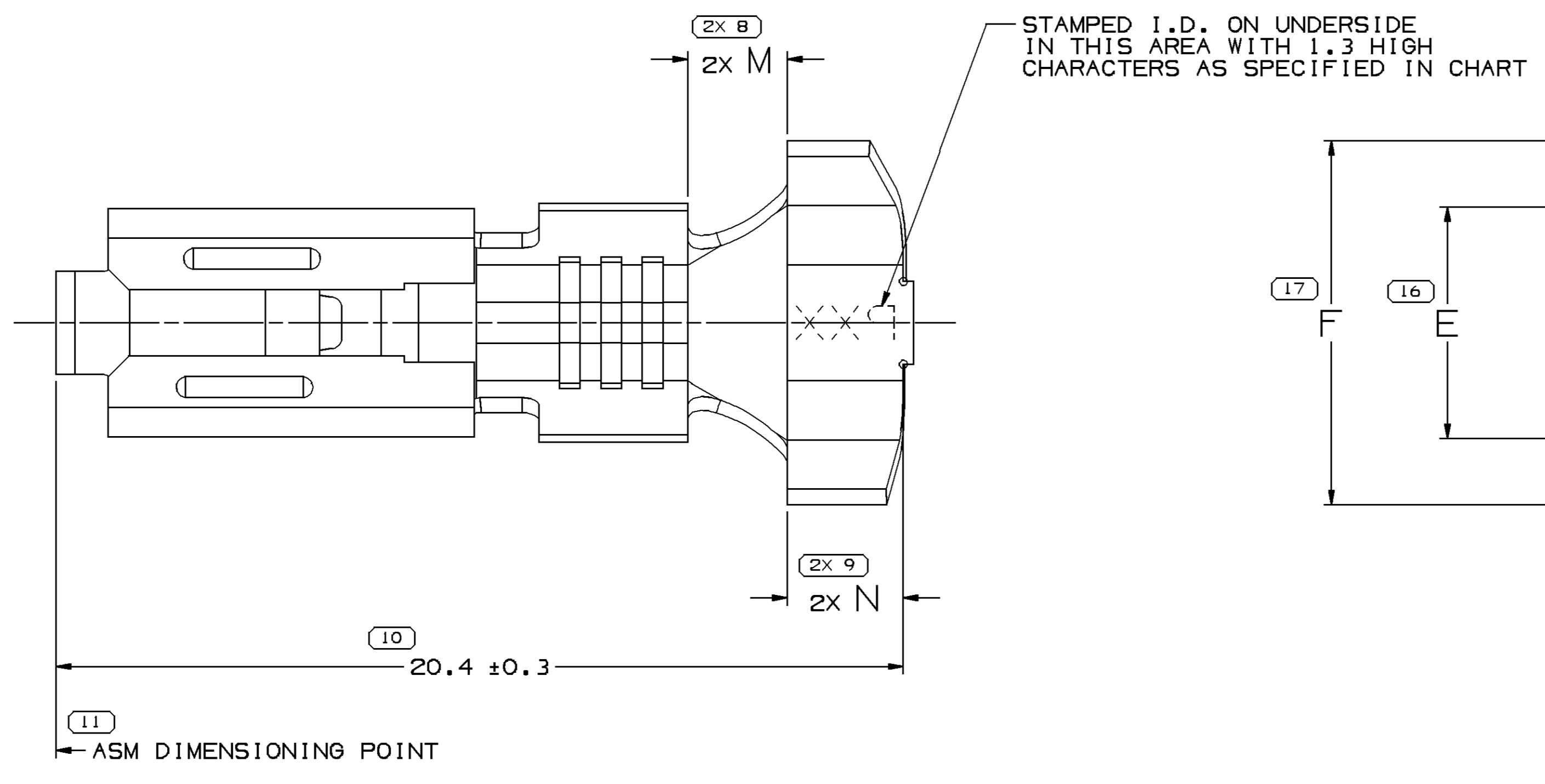
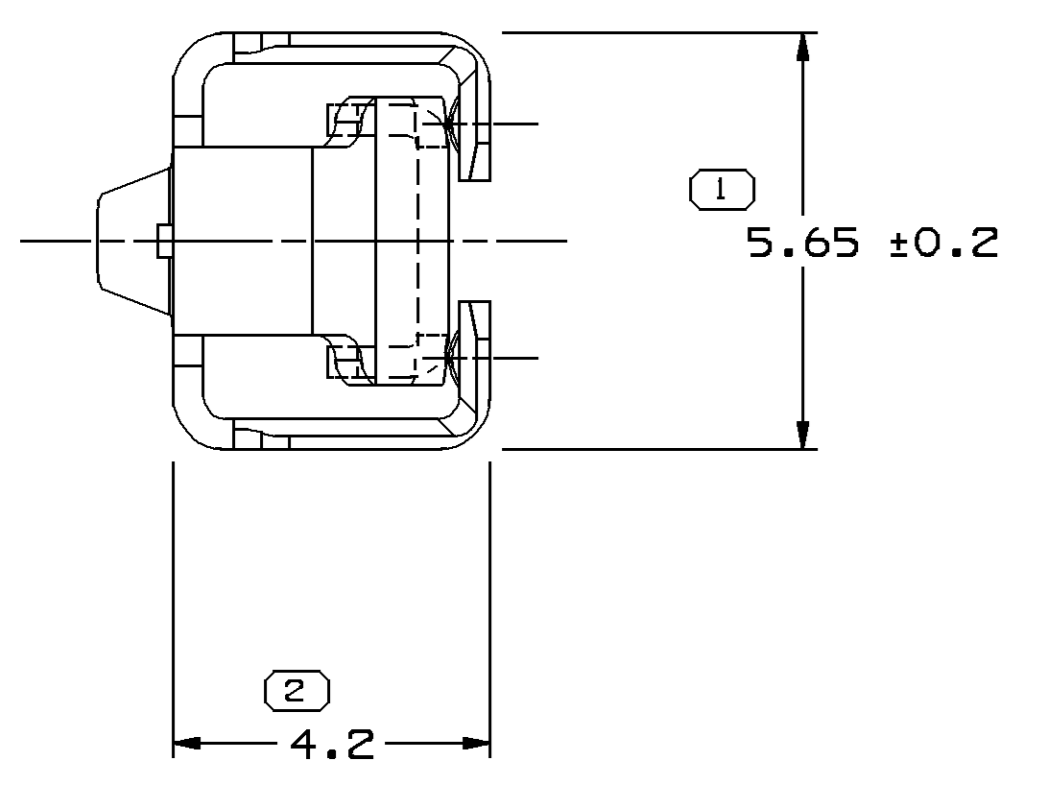


CARRIER STRIP SCALE 1:1

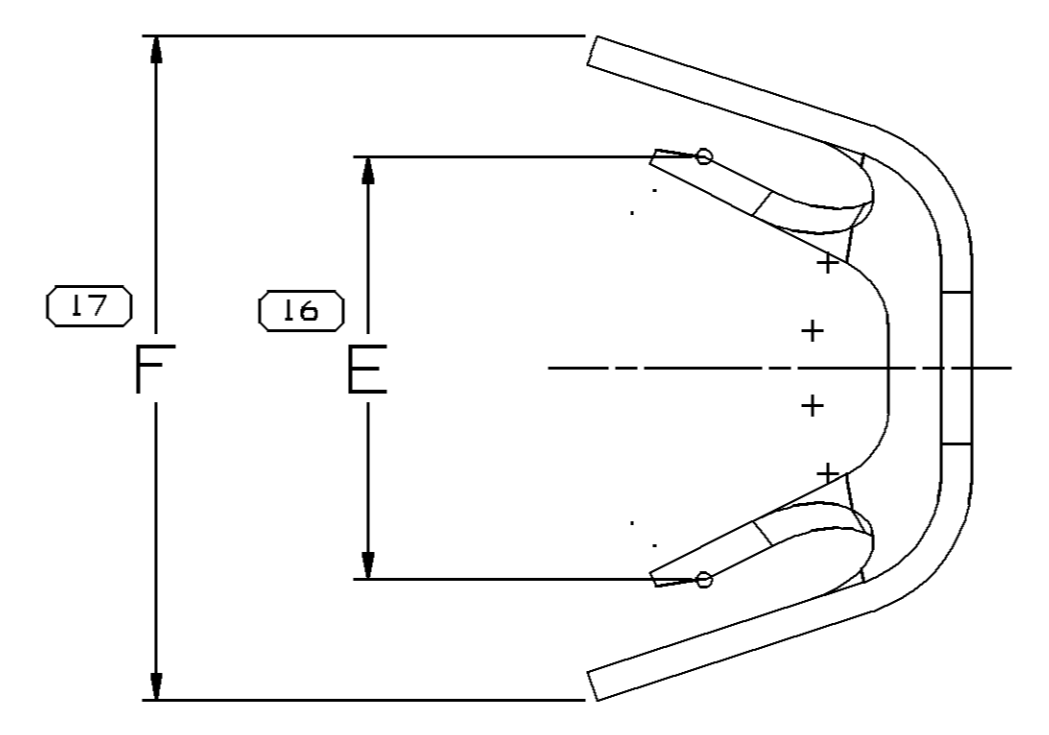


KNURL VIEW - TYPE 102
SAME AS TYPE 101
EXCEPT AS SHOWN

KNURL VIEW - TYPE 103
SAME AS TYPE 101
EXCEPT AS SHOWN

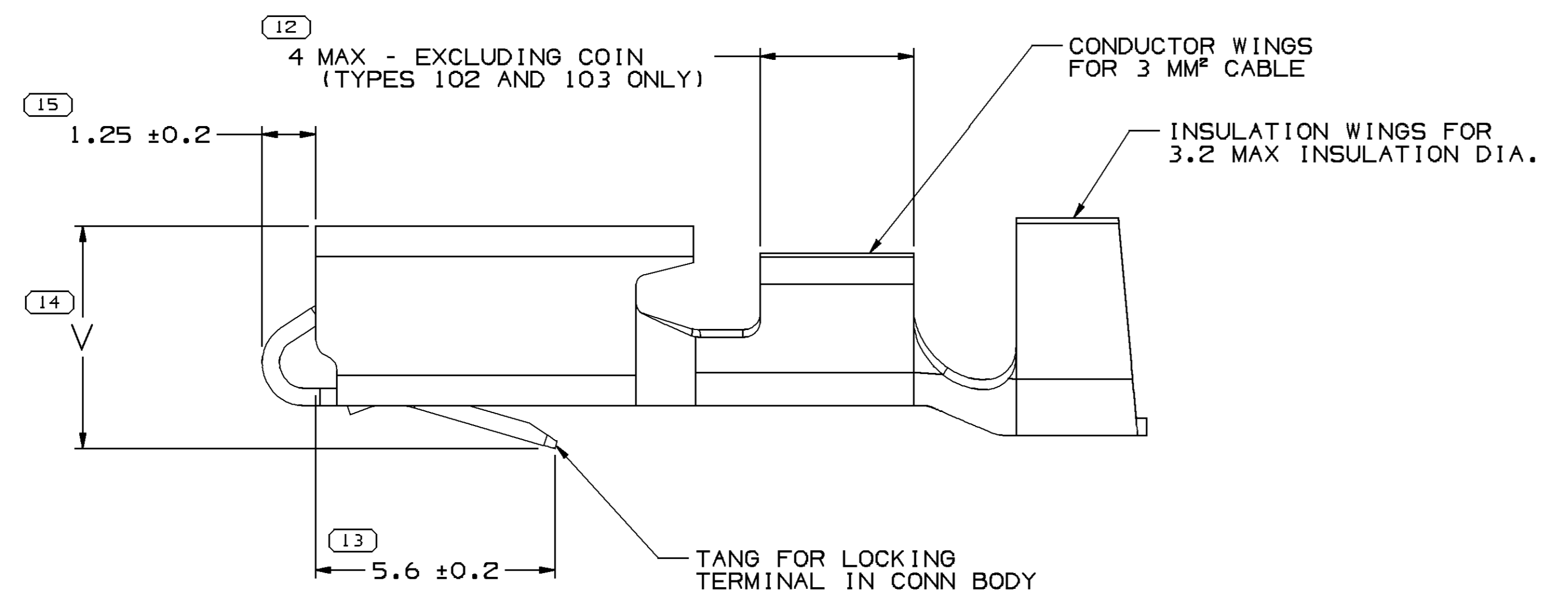


TYPE 101



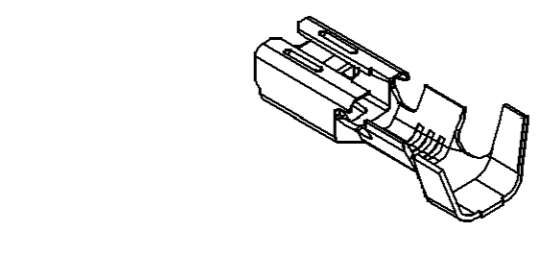
TYPE 102
SAME AS TYPE 101
EXCEPT AS SHOWN

TYPE 103
SAME AS TYPE 101
EXCEPT AS SHOWN



NOTES

- UNLESS OTHERWISE SPECIFIED AND/OR INDICATED:
DIMENSIONS ARE TO FACE OF VIEW SHOWN AND AUTOMATICALLY ROUNDED BY COMPUTER FOR INSPECTION (SEE MATH MODEL FOR PRECISE DIMENSIONS). FOR ALL OTHER DIMENSIONS NOT SHOWN BUT REQUIRED FOR TOOL BUILD, SEE MATH MODEL FOR PRECISE TOOL PATH DATA.
- RECOMMENDED MATING BLADE 4.8 X 0.81.
- TERMINALS TO HAVE TERMINAL ENGAGE OF 8N TO 28N AND TERMINAL DISENGAGE OF 8N TO 28N WHEN MATED TO A 4.8 X 0.81 HARDENED STEEL BLADE. (DISENGAGE MAY BE EXCLUDED WHEN BOX HEIGHT, BOX WIDTH, MINIMUM BOX ENTRANCE, NOSE RADIUS AND TERMINAL ENGAGE ARE MAINTAINED.)
- "PXX" INDICATES "P" PLUS LAST TWO DIGITS OF MAKE DIE SERIES NUMBER (P01, P02, P03, ETC).
- REF. GAGE #6904.
- DO NOT PROBE, TEST OR OTHERWISE CONTACT THE INTERIOR REGION (SPRING OR ANY MOVING PART) OF THIS TERMINAL. SEVERE DAMAGE CAN OCCUR, COMPROMISING THE PERFORMANCE OF THE ELECTRICAL INTERFACE.



VIEW SCALE DOES NOT REFLECT ACTUAL PART SIZE

PART NO	REV/N/P	STATUS	MAT'L SIZE	MAT'L SPEC	PART NO	REV/N/P	STATUS	MAT'L SIZE	MAT'L SPEC	SIZE (MM²)	DIA	ID NO	BLANK TYPE	E±0.4	F±0.4	M±0.15	N±0.15	V±0.15	ANTI-ROTATION NIB
12124026	B1	-	0.406 X 33.73	M1519445	12124057	B2	-	0.406 X 33.73	M1574445	TWO 1 - 0.8	2.7 - 1.9	217	103	4.3+/-0.3	6.6	2.8	2.4	5.2	YES
12066267	E1	-	0.406 X 33.73	M1519445	12052219	E1	-	0.406 X 33.73	M1574445	0.5 0.35	2.51 - 1.84	21	102	2.4+/-0.2	3.8+/-0.3	2.8	2.4	5.2	YES
12059243	E2	-	0.406 X 33.73	M1519445	12052221	E5	-	0.406 X 33.73	M1574445	3	3.2 - 3.04	12	103	4.6	6	2.8	2.4	5.2	YES
12033823	H1	-	0.406 X 33.73	M1519445	12084595	D2	-	0.406 X 33.73	M1574445	3 - 5	5.24 - 3.49	11	103	4.6	7.6	2.4	2.8	5.2	YES
12033822	G1	-	0.406 X 33.73	M1519445	12124304	B1	-	0.406 X 33.73	M1574445	1 - 2	3.97 - 2.48	15	103	3.7	6	2.4	2.8	5.2	YES
12020141	F	- OBSOLETE	0.406 X 33.73	M1519445	12020366	F1	-	0.406 X 33.73	M1574445	ONE 0.8-0.5 & ONE 2-1	3.12-2 & 3.97-2.48	1519	101	5.6	8.8	2.4	2.8	5.2	YES
12020139	F	- OBSOLETE	0.406 X 33.73	M1519445	12020142	G	- OBSOLETE	0.406 X 33.73	M1574445	TWO 0.35	2 - 1.35	222	101	3.6	5.3	2.4	2.8	5.2	YES
12015904	E	- OBSOLETE	0.406 X 33.73	M1519445	12020140	G	- OBSOLETE	0.406 X 33.73	M1574445	0.35	2 - 1.35	22	101	2.2	3.6	2.4	2.8	5.2	YES
12015831	D	- OBSOLETE	0.406 X 33.73	M1519445	12015919	F	- OBSOLETE	0.406 X 33.73	M1574445	TWO 1	2.68 - 2.48	216	101	6.6	7.6	2.4	2.8	5.2	YES
12015830	D	- OBSOLETE	0.406 X 33.73	M1519445	12015863	E	- OBSOLETE	0.406 X 33.73	M1574445	TWO 0.8 - 0.5	3.12 - 2.03	219	101	5.1	8	2.4	2.8	5.2	YES
12015829	D	- OBSOLETE	0.406 X 33.73	M1519445	12015862	E	- OBSOLETE	0.406 X 33.73	M1574445	5 - 3	5.24 - 3.49	11	101	4.6	7.6	2.4	2.8	5.2	YES
12015828	J3	-	0.406 X 33.73	M1519445	12015861	E	- OBSOLETE	0.406 X 33.73	M1574445	2 - 1	3.97 - 2.48	15	101	3.7	6	2.4	2.8	5.2	YES
12015332	F	- OBSOLETE	0.406 X 33.73	M1403445	12015860	K2	-	0.406 X 33.73	M1574445	0.8 - 0.5	3.12 - 2.03	19	102	3.2	5	2.4	2.8	5.2	YES
12015146	H	- OBSOLETE	0.406 X 33.73	M1403445						TWO 0.8 - 0.5	3.12 - 2.03	219	101	5.1	8	2.4	2.8	5.2	YES
12015145	H	- OBSOLETE	0.406 X 33.73	M1403445						5 - 3	5.24 - 3.49	11	101	4.6	7.6	2.4	2.8	5.2	YES
12015144	F	- OBSOLETE	0.406 X 33.73	M1403445						2 - 1	3.97 - 2.48	15	101	3.7	6	2.4	2.8	5.2	YES
										0.8 - 0.5	3.12 - 2.03	19	101	3.2	5	2.4	2.8	5.2	YES

DELPHI
DELPHI PACKARD ELECTRIC SYSTEMS
WARREN, OH

DR R.L. PETERSON DATE 09NOB4
AP/D1 E. HESTON 26NOB4
AP/D2 J.S. PENNEY 12DEB4
AP/D3 E.J. TOLNAR 12DEB4
AP/D4
AP/D5

UNLESS OTHERWISE SPECIFIED
DIMENSIONS ARE IN ACCORDANCE WITH ASME Y14.5M-1994
AS INDICATED BY THE IN SCALE DIMENSIONS AND NO TOLERANCE
LIMITS ARE ESTABLISHED
DIMENSIONS ARE IN MILLIMETERS

ALL DIMENSIONS ARE IN MILLIMETERS

UNPLATED

TAXI TERM F M/P 480

DRAWING NUMBER
12015247

SCALE 10:1

FRAME NO 1 OF 1

SHEET NO 1 OF 1

REV N/P R 06