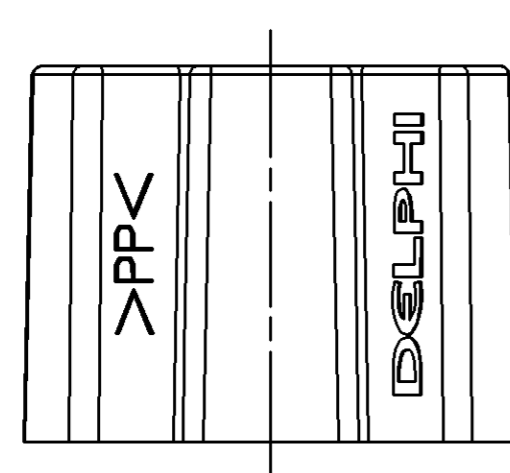
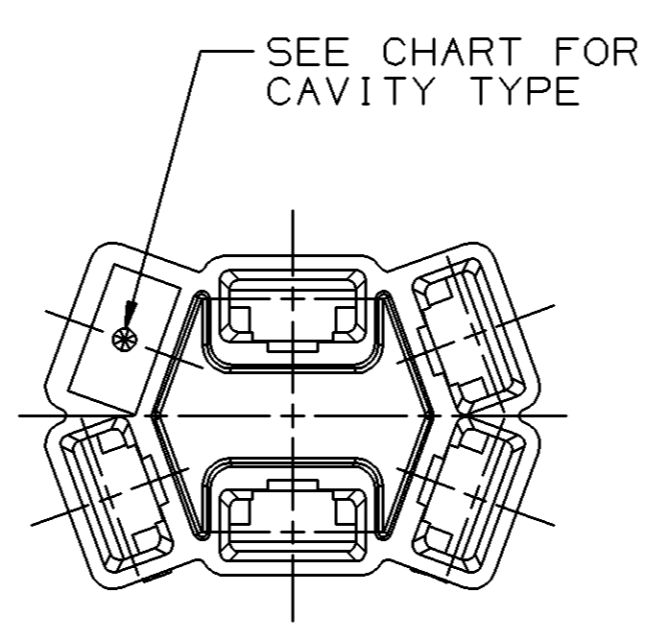
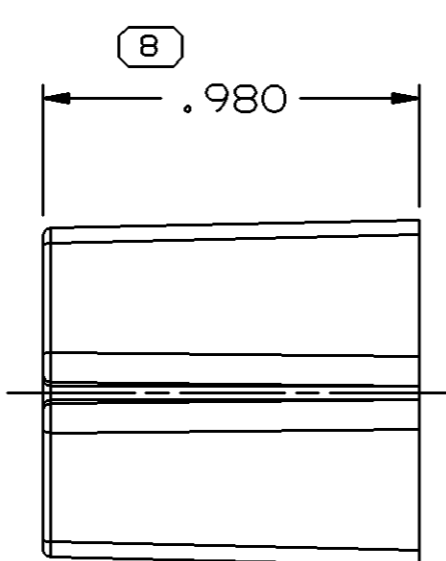
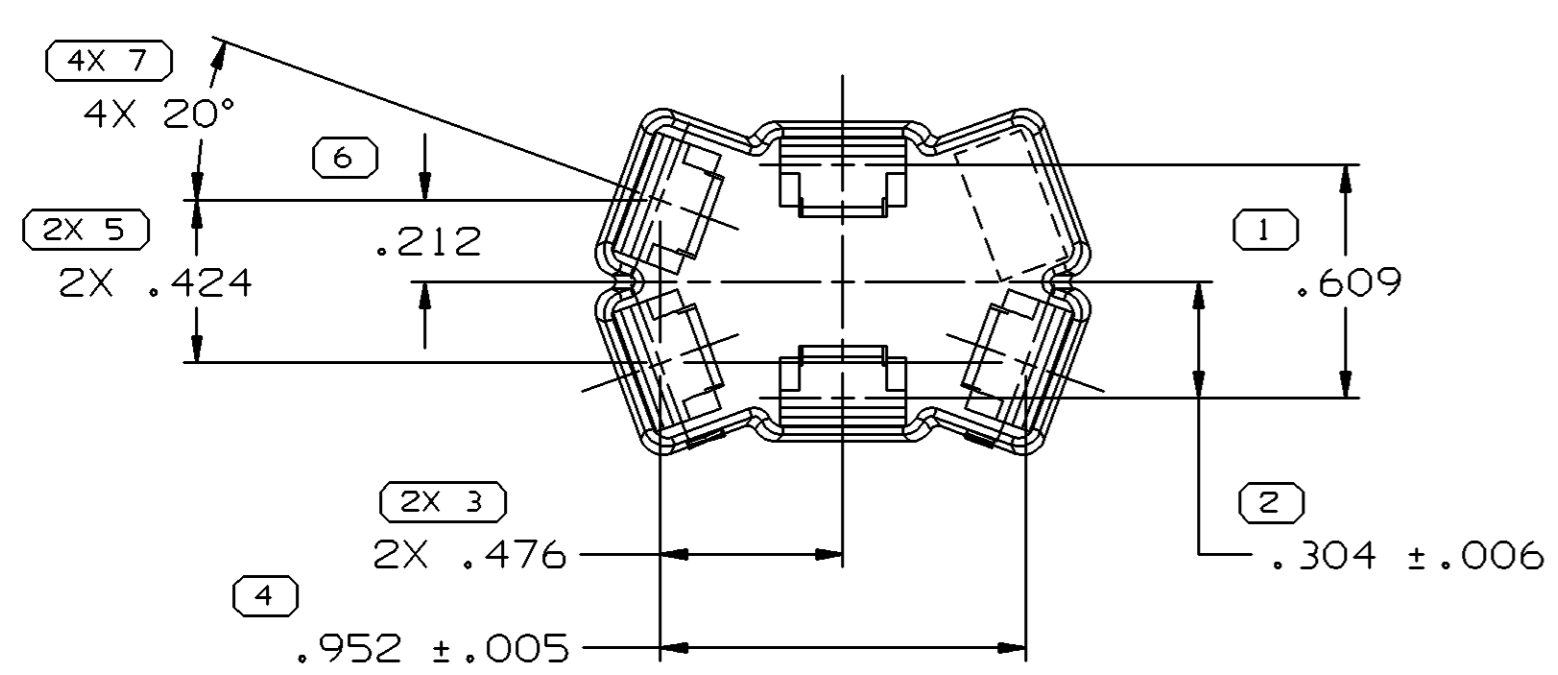
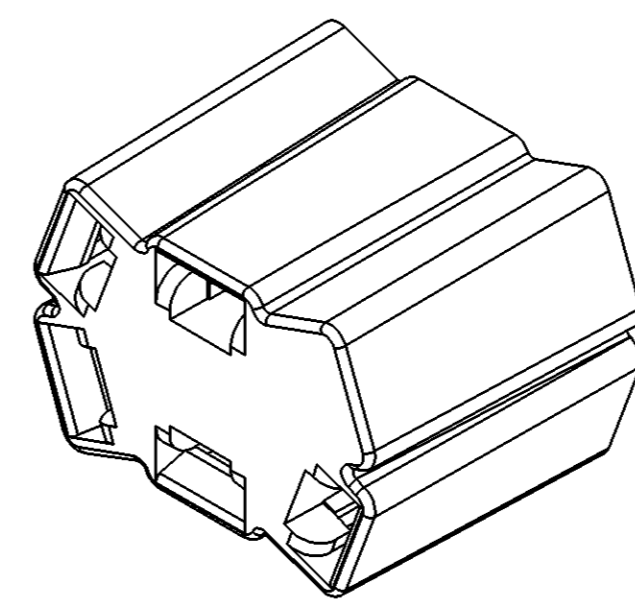
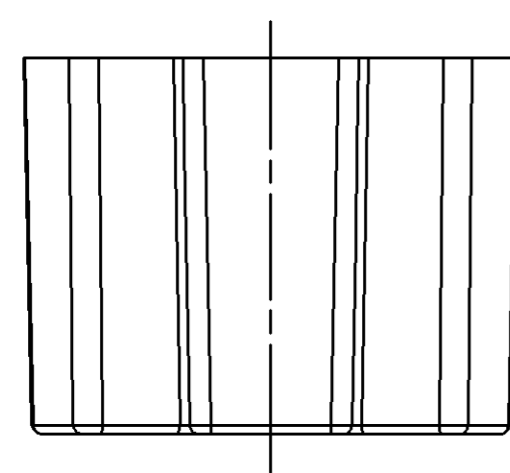


SYMBOL DEFINITION		TOTAL NO OF INSPECTIONS REQUIRED	
A DIMENSION WITHOUT AN INSPECTION REPORT SYMBOL ( ) DOES NOT REQUIRE INSPECTION. IT MAY BE CONTROLLED ON THE INDIVIDUAL COMPONENT DRAWING.		13	
	LAST NO. USED	8	

MISSING SYMBOLS		DWG STATUS					REVISION HISTORY		AUTH	DR	APVD 1	APVD 2
DATE	STG	REV	N/P	CHG	ZONE							
04FE03	R	01	-	-		CREATED PD		236282	LEG	LEG	ET	
06MRO3	R	02	-	-		ALL PARTS - ADDED VIEW AND COLUMN HEADER		237476	LEG	LEG	ET	
01N005	R	03	-	-		ALL PARTS - REDRAWN TO LATEST PD STANDARDS		274072	AMG	AMG	ET	



NOTES

- UNLESS OTHERWISE SPECIFIED AND/OR INDICATED:  
 DIMENSIONS ARE TO FACE OF VIEW SHOWN AND AUTOMATICALLY ROUNDED BY COMPUTER FOR INSPECTION (SEE MATH MODEL FOR PRECISE DIMENSIONS). FOR ALL OTHER DIMENSIONS NOT SHOWN BUT REQUIRED FOR TOOL BUILD, SEE MATH MODEL FOR PRECISE TOOL PATH DATA.
- MATERIAL RECYCLING CODE PER ISO 11469. (.100)X(.010) RAISED CHARACTERS AS SHOWN TO BE LOCATED ON ANY EXTERIOR SURFACE. OPTIONAL CONSTRUCTION TO BE NO MATERIAL RECYCLING CODE.
- THIS PART ACCEPTS THE FOLLOWING COMPONENTS OR EQUIVALENT:  
 CAVITIES TO ACCEPT 02962508 TERMINAL OR EQUIVALENT.
- (.075)X(.010) RAISED DELPHI CORPORATE BRAND TO BE LOCATED ON ANY EXTERIOR SURFACE, PREFERABLY VISIBLE AT FINAL ASSEMBLY. OPTIONAL CONSTRUCTION TO BE "PED" OR NO LOGO.

DWG TYPE PART DRAWING	
STYLE	
VOLUME (CM³) SEE CHART	DISTR CODE D
UNLESS OTHERWISE SPECIFIED THIS DOCUMENT IS IN ACCORDANCE WITH ASME Y14.5M-1994 AS AMENDED BY THE GM GLOBAL DIMENSIONING AND TOLERANCING ADDENDUM-2001. SEPARATE PATTERNS OF FEATURES MAY BE GAGED SEPARATELY REGARDLESS OF DATUM REFERENCES.	
ALL DIMENSIONS ARE IN INCHES	
REFERENCE	
THIRD ANGLE PROJECTION	DO NOT SCALE
USE MATH DATA	UNIGRAPHICS

**DELPHI**  
 DELPHI PACKARD ELECTRIC SYSTEMS  
 WARREN, OH

DR	DATE
APVD1 L. GARAY	04FE03
APVD2 L. GARAY	04FE03
APVD3 E. TRACEY	04FE03
APVD4	
APVD5	

SUBSTANCES OF CONCERN AND RECYCLED CONTENT PER DELPHI 10949001

MATERIAL  
SEE CHART

DRAWING NAME  
TAXI CONN F 56

DRAWING NUMBER  
12059295

SIZE A1	SCALE 2:1	FRAME NO 1 OF 1	SHEET NO 1 OF 1	STG R	REV 03	N/P -
------------	--------------	--------------------	--------------------	----------	-----------	----------

12052978	03	AB		M2097002 PP IM NAT	6	TERMINAL HOLDING	6.643
08911352	03	AB		M2097001 PP IM BLK	5	FLASHED	6.505
PART NO	REV	N/P	STATUS	MATERIAL SPECIFICATION AND COLOR	CAVITIES	CAVITY	VOLUME CM³

(8) PROCESS SENSITIVE DIMENSION
DIMENSIONS ENCLOSED IN ( ) INDICATE REFERENCE DIMENSIONS AND NO TOLERANCE LIMITS ARE ESTABLISHED
DIMENSIONAL RANGE (IN) CHART H
FROM 0 .750 >1.250 >2.750 >4.000
TO .750 1.250 2.750 4.000
TOLERANCE UNLESS OTHERWISE SPECIFIED
±.005 ±.010 ±.012 ±.016 ±.020
ANGULAR TOLERANCE ±2°