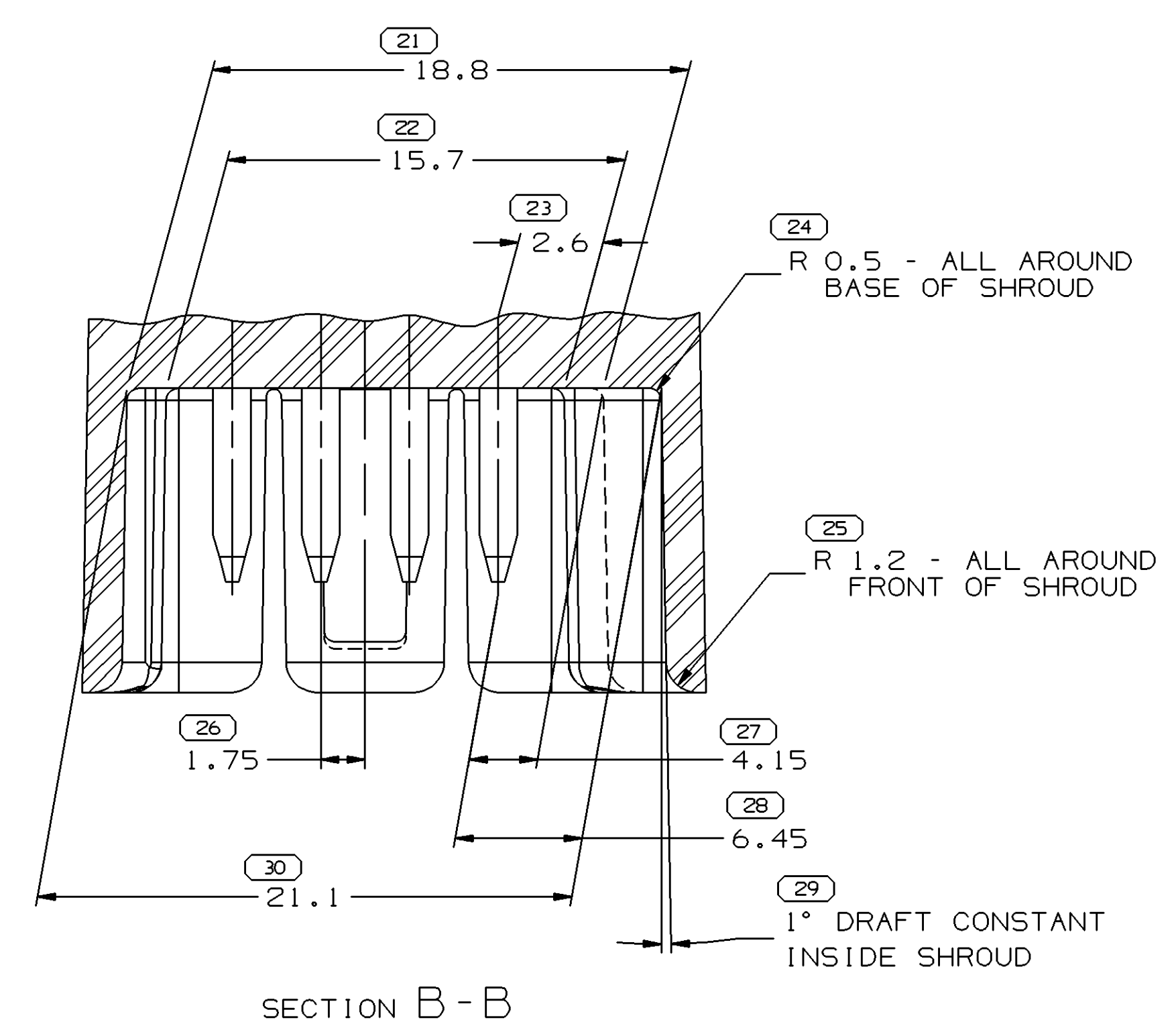
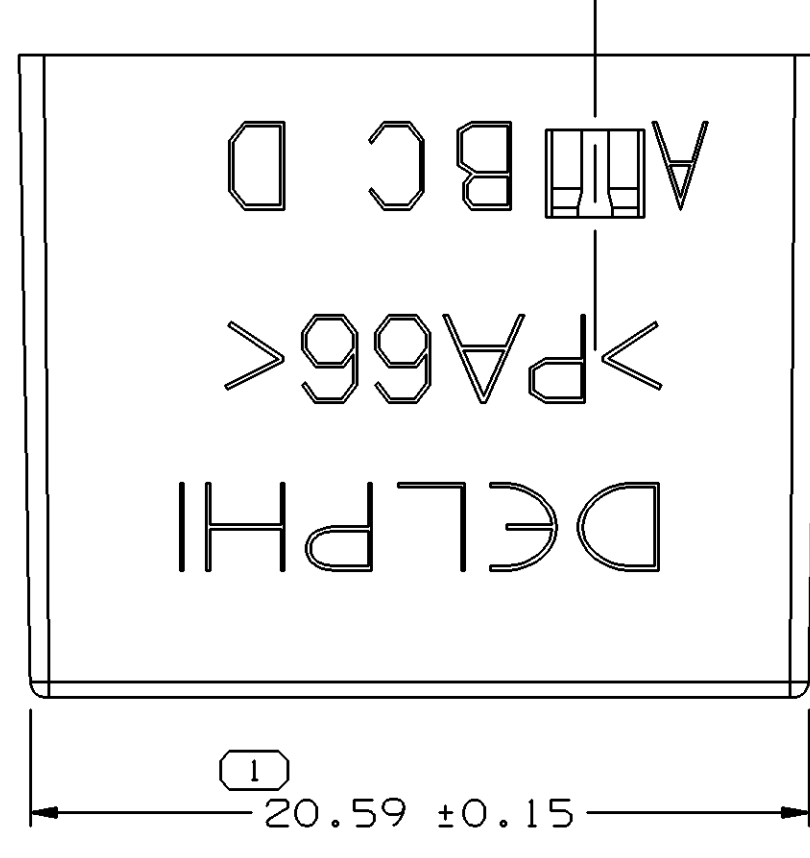


MATERIAL SPECIFICATIONS

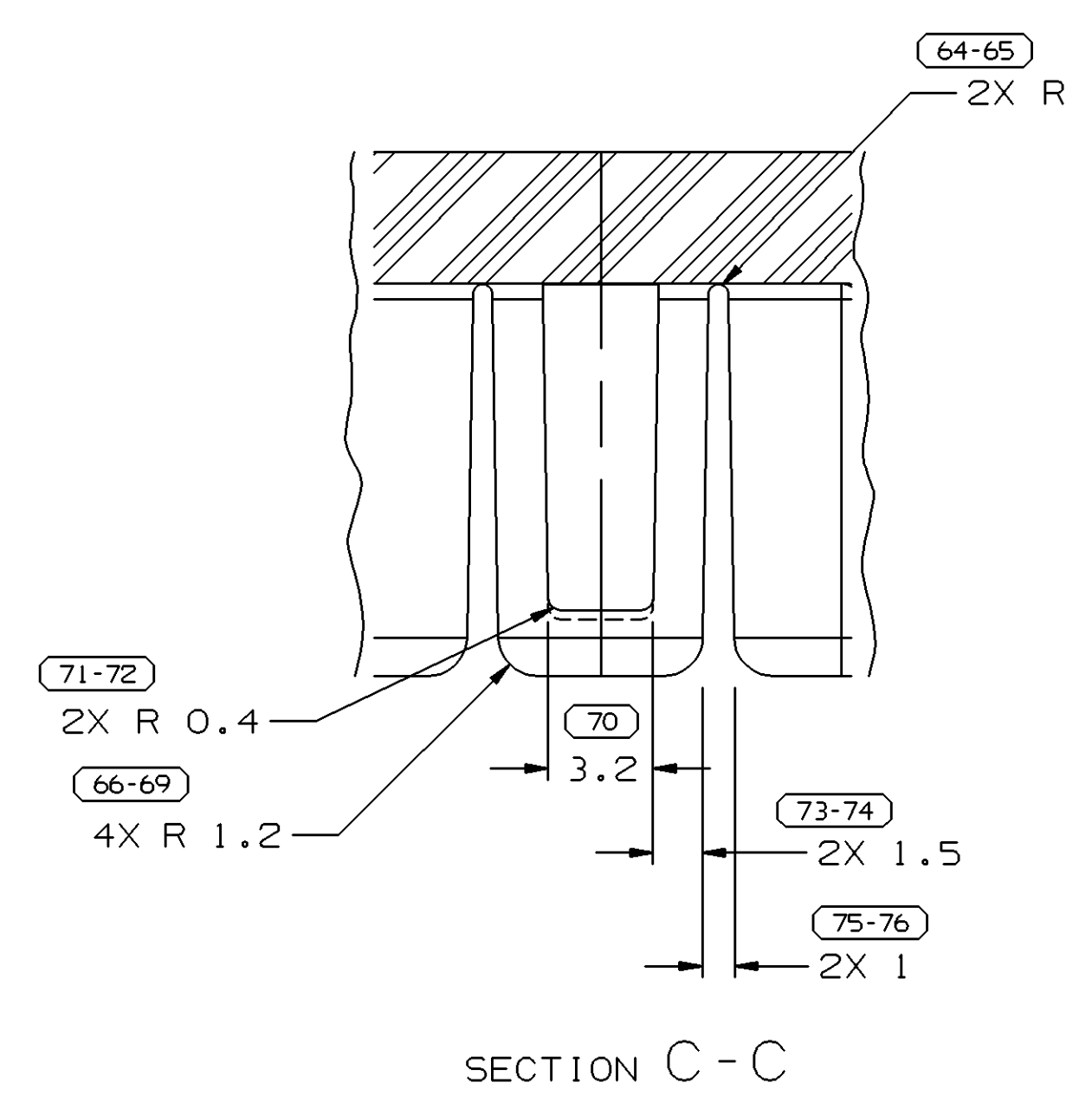
RECOMMENDED
 BASE METAL - CDA-210, GILDING EXTRA SPRING TEMPER
 PLATING - 0.005±0.0025 MM THICK TIN

MINIMUMS
 ELECTRICAL CONDUCTIVITY - ≥ 20% IACS AT 20°C. USE OF A MATERIAL WITH CONDUCTIVITY < 20% IACS MUST BE APPROVED BY PACKARD ELECTRIC MATERIALS ENGINEERING.
 TENSILE STRENGTH - 407 MPa
 PLATING - FOR LOW ENERGY (≤ 5V) AND NON-PASSENGER COMPARTMENT POWER CIRCUITS, 0.0050±0.0025 MM THICK TIN. FOR MATERIALS CONTAINING 10% OR MORE ZINC, AN UNDERPLATE OF COPPER 0.005±0.0025 MM THICK IS REQUIRED.

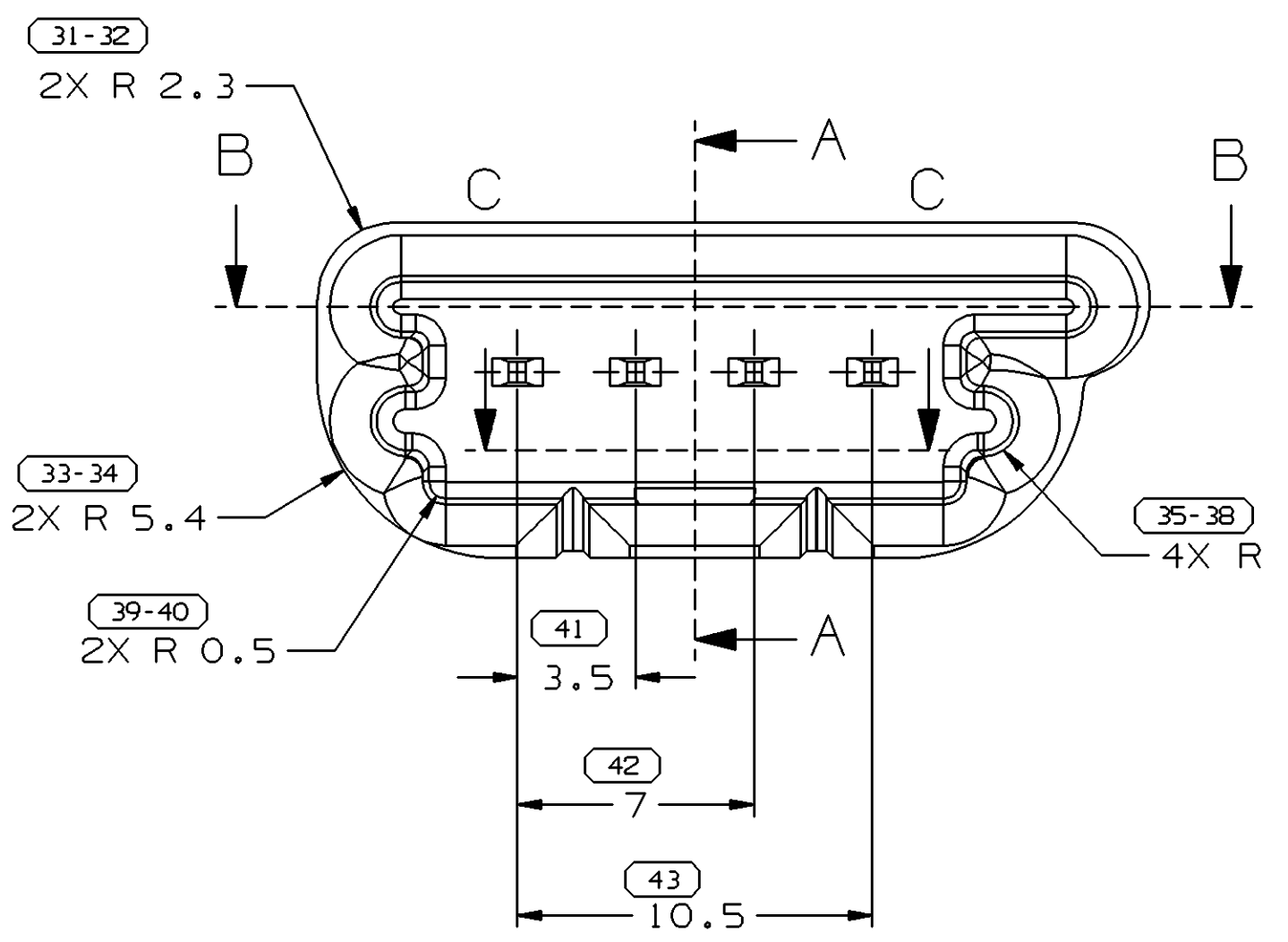
MATING BLADE INFORMATION
 INSPECTION SYMBOLS SHOWN IN THESE VIEWS ARE FOR REFERENCE ONLY



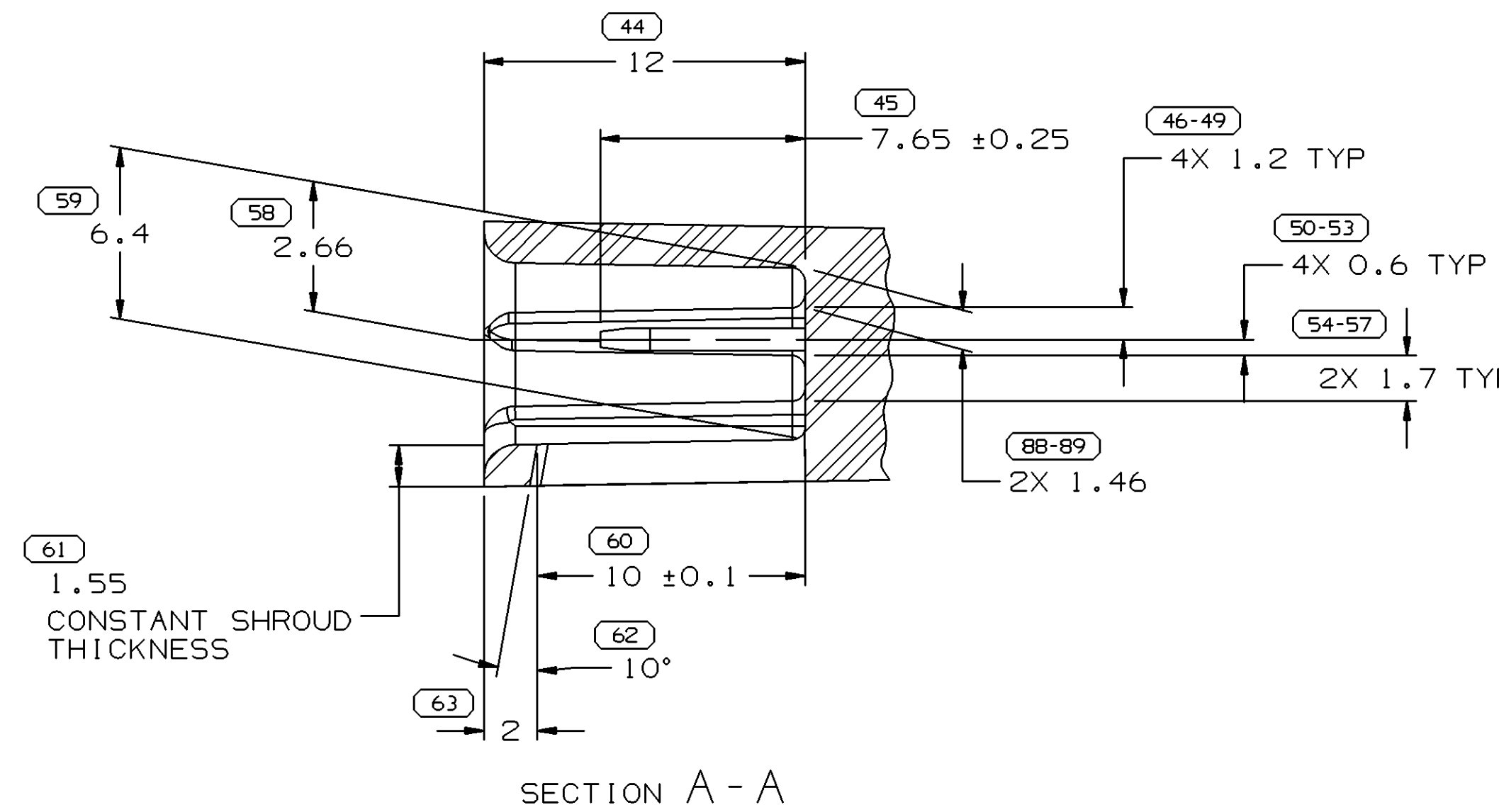
SECTION B-B



SECTION C-C

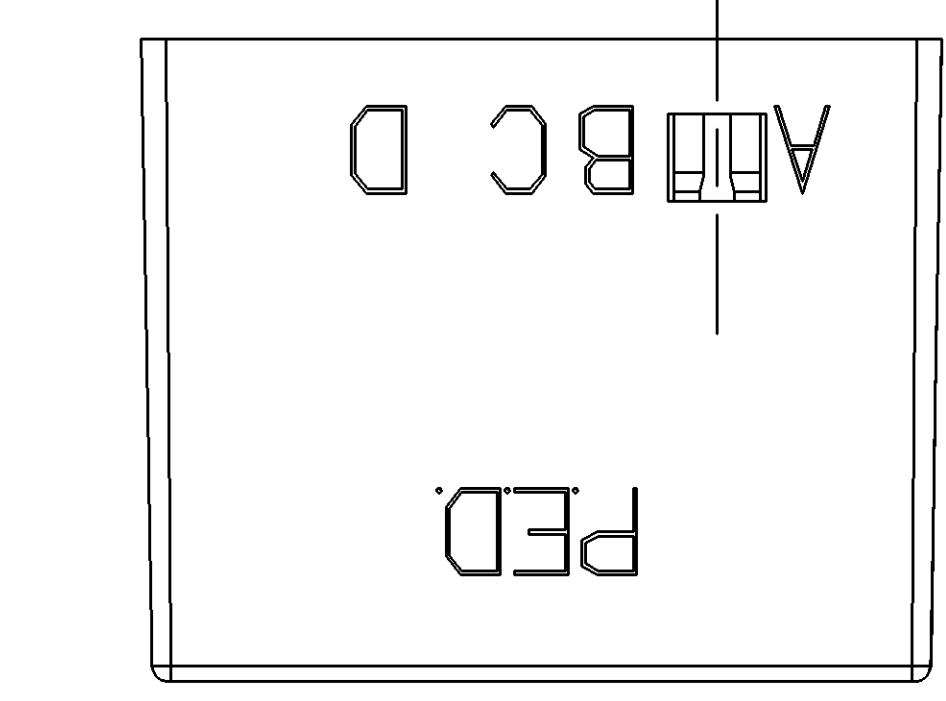


MATING CONNECTOR INFORMATION
 INSPECTION SYMBOLS SHOWN IN THESE VIEWS ARE FOR REFERENCE ONLY

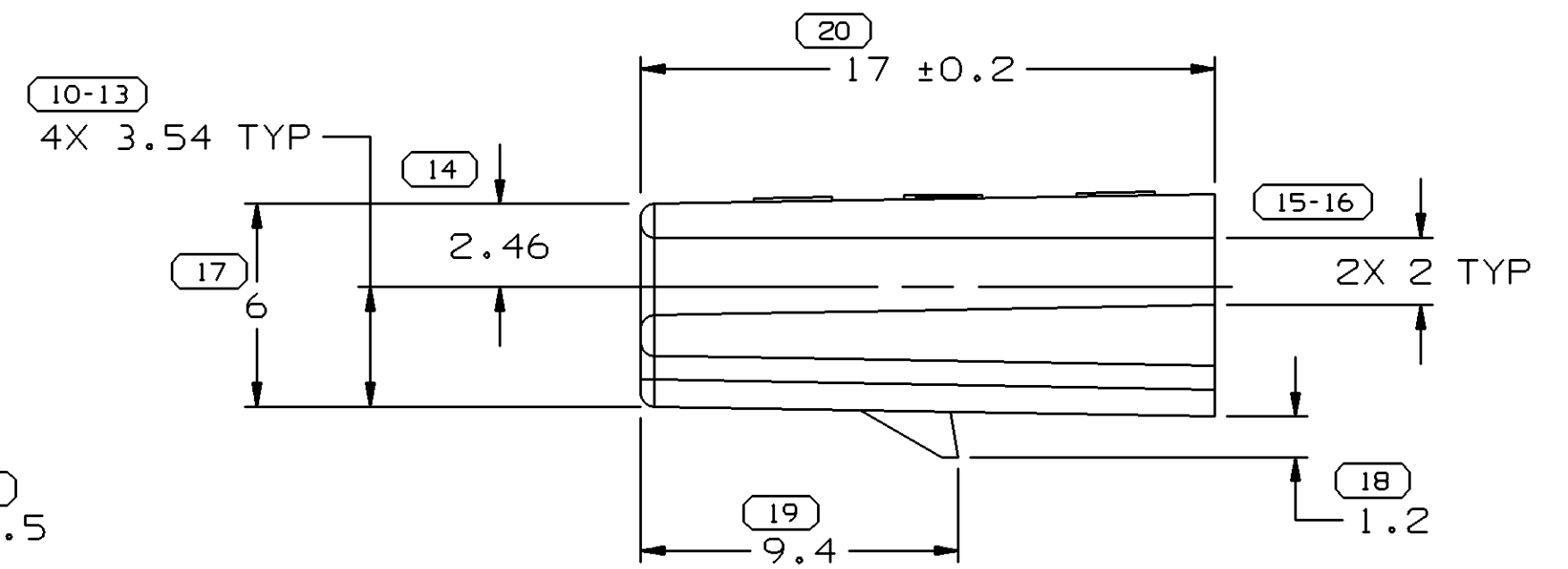
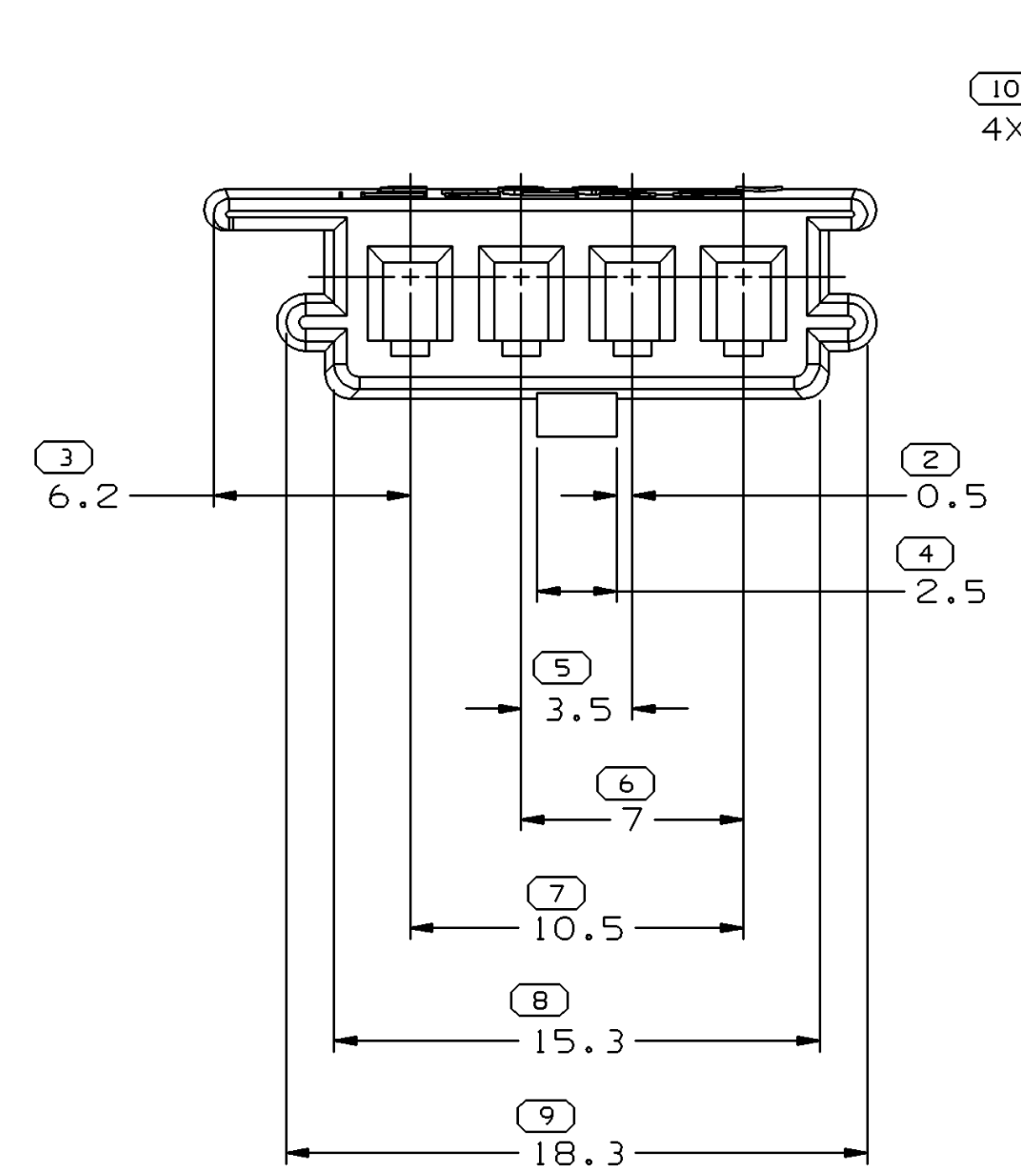


SECTION A-A

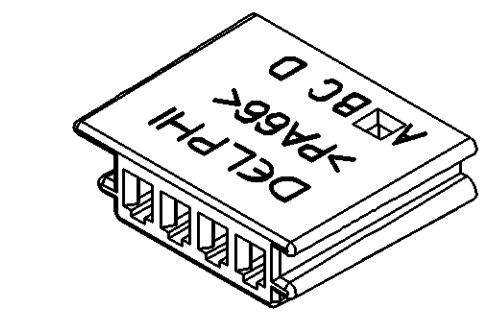
- NOTES**
- UNLESS OTHERWISE SPECIFIED AND/OR INDICATED:
 DIMENSIONS ARE TO FACE OF VIEW SHOWN AND AUTOMATICALLY ROUNDED BY COMPUTER FOR INSPECTION. (SEE MATH MODEL FOR PRECISE DIMENSIONS.) FOR ALL OTHER DIMENSIONS NOT SHOWN BUT REQUIRED FOR TOOL BUILD, SEE MATH MODEL FOR PRECISE TOOL PATH DATA. ALL RADII 0.5
 DRAFT IS 1° ON ALL OUTSIDE SURFACES
 - SUGGESTED MATERIAL: PA6.



OPTIONAL CONSTRUCTION



- NOTES**
- UNLESS OTHERWISE SPECIFIED AND/OR INDICATED:
 DIMENSIONS ARE TO FACE OF VIEW SHOWN AND AUTOMATICALLY ROUNDED BY COMPUTER FOR INSPECTION. (SEE MATH MODEL FOR PRECISE DIMENSIONS.) FOR ALL OTHER DIMENSIONS NOT SHOWN BUT REQUIRED FOR TOOL BUILD, SEE MATH MODEL FOR PRECISE TOOL PATH DATA. LIKE CAVITIES ARE IDENTICAL
 SECONDARY LOCKING FEATURES ARE IDENTICAL
 - THIS PART IS NOT CONTROLLED FOR AUTOMATIC FEEDING.
 - REFERENCE MATING COMPONENTS OR EQUIVALENT:
 CONNECTOR F.B. SWITCH 20463709
 CONNECTOR 12052054
 - THIS PART ACCEPTS THE FOLLOWING COMPONENTS OR EQUIVALENT:
 CAVITIES TO ACCEPT 12047883 TERMINAL
 MAX. INSULATION CRIMP MUST BE LESS THAN 2.3 HIGH AND 2.7 WIDE
 SECONDARY LOCK 12045689.
 - MATERIAL RECYCLING CODE PER ISO 11469. (2.3)X(0.1) CHARACTERS AS SHOWN TO BE LOCATED ON ANY EXTERIOR SURFACE.
 - (2.3)X(0.1) RAISED DELPHI CORPORATE BRAND TO BE LOCATED ON ANY EXTERIOR SURFACE, PREFERABLY VISIBLE AT FINAL ASSEMBLY. OPTIONAL CONSTRUCTION TO BE "PED" OR NO LOGO.



VIEW SCALE DOES NOT REFLECT ACTUAL PART SIZE

DIMENSIONAL RANGE (MM)		CHART ET	
FROM	TO	FROM	TO
> 0	> 20	> 70	> 100
> 20	> 30	> 100	> 150
> 30	> 40	> 150	> 200
> 40	> 50	> 200	> 250
> 50	> 60	> 250	> 300
> 60	> 70	> 300	> 400
TOLERANCE UNLESS OTHERWISE SPECIFIED		ANGULAR TOLERANCE 12°	
± 0.15	± 0.2	± 0.3	± 0.5
± 0.4	± 0.6	± 1.0	± 1.2

DWG TYPE		PART DRAWING	
STYLE	D	DISTR CODE	D
VOLUME (CM³)	1.161		
UNLESS OTHERWISE SPECIFIED			
THIS DOCUMENT IS IN ACCORDANCE WITH ASME Y14.5-1994.			
RULE #1: PREFER FORM #1 UNLESS OTHERWISE SPECIFIED			
RELATIONSHIP BETWEEN FEATURES IS ESTABLISHED BY ORIENTATION OR LOCATION TOLERANCES. SEPARATE POSITION CALLOUTS MAY BE GAGED SEPARATELY REGARDLESS OF DATA REFERENCES. DIMENSIONS APPLY AFTER HEAT TREAT AND SURFACE COATINGS.			
ALL DIMENSIONS ARE IN MILLIMETERS			
REFERENCE		THIRD ANGLE PROJECTION	
DO NOT SCALE		USE MATH DATA	

DELPHI
 DELPHI PACKARD ELECTRIC SYSTEMS
 WARREN, OH

DR	DATE
APV01 B. BENETTO	210C87
APV02 R. W. GLEASON	16DEB7
APV03 R. C. BARKER	04JAB8
APV04	
APV05	

SUBSTANCES OF CONCERN AND RECYCLED CONTENT PER DELPHI 10949001

MATERIAL: M3592024 PA66 HS 1M CRM

DRAWING NAME: CONN 4 F M/P 150 CRM

DRAWING NUMBER: 12045813

SIZE: A0
 SCALE: 5:1
 FRAME NO: 1 OF 1
 SHEET NO: 1 OF 1
 DATE: 05

SYMBOL DEFINITION		MISSING NUMBERS	
A DIMENSION WITHOUT AN INSPECTION REPORT SYMBOL () DOES NOT REQUIRE INSPECTION. IT MAY BE CONTROLLED ON AN INDIVIDUAL COMPONENT DRAWING.	TOTAL NO. OF SYMBOLS ON DRAWING	59	
	LAST NO. USED	89	

DWG STATUS					REVISION HISTORY			AUTH	DR	APV01	APV02	
DATE	STG	REV	N/P	CHG	ZONE							
29NO01	R	04	-	-		CLEARED REV COL. MAT'L SPEC WAS R0061931 PA6-NAT. ADDED DELPHI CORPORATE BRAND & MAT'L SPEC LOGO, UPDATED PDM ATTRIBUTES & REVISED PSD			212900	KGP	RVP	GMC
12DE01	R	04	AA	-		PSD WAS DIM 6 & REVISED MAT'L SPEC			218631	KGP	RVP	GMC
14JA04	R	04	AB	-		CORRECTED DIMS 1B1 13.7 SHOULD BE 15.3			250761	LMB	LMB	BG
11MR05	R	04	AC	-		2X 1.7 TYP WAS 4X 1.7 TYP AND ADDED 2X 1.46			264677	HAM	HAM	BD8
05JL05	R	05	-	-		MAT'L SPEC WAS M3592002			269884	RTV	JVM	EST