

SPECIFICATIONS

FITS:
ST1 Series
ST2 Series
ST3 Series

APPROVALS:
RoHS
COMPLIANT

MATERIALS

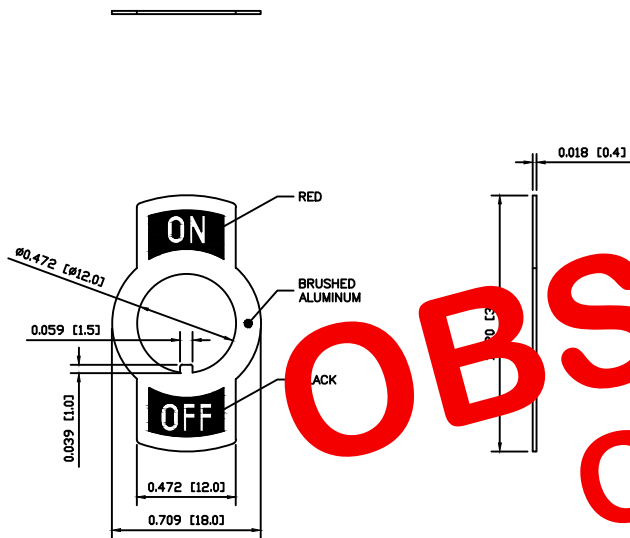
MARKING PLATE:
Aluminum

COLORS

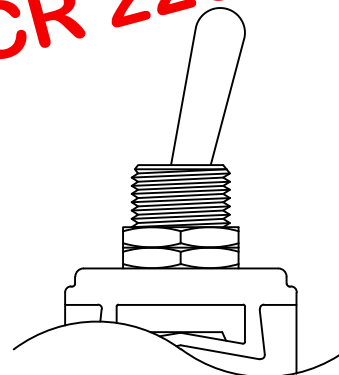
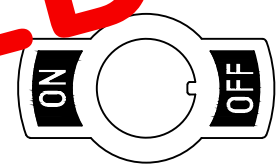
MARKING PLATE:
Aluminum
Brushed Finish

ON SIDE:
Red

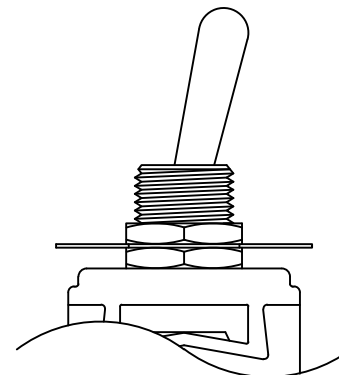
OFF SIDE:
Black



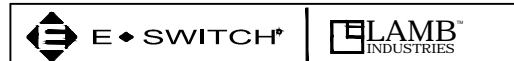
OBSOLETE
OCT. 2015
PCR 22019



EXPLODED VIEW



ASSEMBLED VIEW



DIMENSIONS	
INCHES [MILLIMETERS]	
GENERAL TOLERANCES	
±0.008 [±0.2] / ±1*	
SCALE	1:1
PROJECTION	First Angle

DRAWING NUMBER		DATE		REVISION	
38-ACCM043		AUGUST 24, 2009		A	

THE INFORMATION CONTAINED IN THIS DOCUMENT IS PROPRIETARY TO E-SWITCH AND IS NOT TO BE COPIED OR TRANSFERRED.

INITIAL RELEASE	PCRD0088	06/06/24	CAB
DESCRIPTION	PCR	DATE	DRAWN BY

ACC-M04-3