



# SERIES R4 SWITCHES

## ROCKER SWITCHES - ILLUMINATED



### FEATURES & BENEFITS

- ▶ Fully illuminated actuator option
- ▶ Neon & incandescent lamp options

### APPLICATIONS/MARKETS

- ▶ Industrial
- ▶ Audio/visual
- ▶ Lighting ballast

### SPECIFICATIONS

|                               |  |
|-------------------------------|--|
| Contact Rating*:              | Versions D,G,I - 10A @ 250V, 15A @ 125V AC<br>Versions A,B,C,E,F,H,J-16A @ 250V, 20A @ 125V AC |
| Life Expectancy (Mechanical): | 30,000 cycles  |
| Life Expectancy (Electrical): | 6,000 cycles   |
| Contact Resistance:           | 20 mΩ max. typical initial @ 2-4 VDC   |
| Insulation Resistance:        | >1,000MΩ   |
| Dielectric Strength:          | >1,500V 1 minute between terminals   |
| Safety Std. Approval:         | UL, VDE  |
| Operating Temp:               | -20°C to 55°C  |

### MATERIALS

|                      |                                |
|----------------------|--------------------------------|
| Body:                | Nylon 6/6 (UL94 V-2)           |
| Rocker:              | Nylon 6/6 (UL94 V-2)           |
| Contact Surface:     | Silver over nickel alloy       |
| Terminal:            | Silver plated copper alloy     |
| Illuminated Rockers: | Neon lamp or Incandescent bulb |

### HOW TO ORDER

| SERIES                            | CIRCUIT   | HOUSING COLOR                           | ACTUATOR COLOR   | DOT LENS COLOR                                 | MARKING  | TERMINATION | LAMP VOLTAGE  |
|-----------------------------------|-----------|---|--|--|--|-------------|---|
| <b>R4</b>                         | See Below | BLK = Black<br>WHT= White<br>GRY = Grey | BLK = Black<br>WHT= White<br>RED = Red<br>RIL = Red ILL.*<br>GIL = Green ILL.*<br>YIL = Yellow ILL.* | RED = Red**<br>GRN = Green**<br>YEL = Yellow** | A<br>B<br>C<br>D<br>E<br>F<br>G<br>H<br>I<br>J<br>K<br>L | F = Faston  | 0 = No Lamp<br>1 = 125V AC <sup>1</sup><br>2 = 250V AC <sup>1</sup><br>3 = 12V DC <sup>2</sup><br>4 = 24V DC <sup>2</sup><br><br><sup>1</sup> Neon Bulb<br><sup>2</sup> Incandescent Bulb |
| <b>CIRCUIT CODE:</b>              |           |   |  |  |  |             |   |
| A = SPST On-Off                   |           |   |  |  |  |             |   |
| B = SPST On-Off Dot Illuminated   |           |   |  |  |  |             |   |
| C = SPDT On-On                    |           |   |  |  |  |             |   |
| D = SPDT On-Off-On                |           |   |  |  |  |             |   |
| E = SPDT On-(On)                  |           |   |  |  |  |             |   |
| F = SPST Off-(On)                 |           |   |  |  |  |             |   |
| G = SPDT (On)-Off-(On)            |           |   |  |  |  |             |   |
| H = SPST On-(Off)                 |           |   |  |  |  |             |   |
| I = SPDT On-Off-(On)              |           |   |  |  |  |             |   |
| J = SPST On-Off Fully Illuminated |           |   |  |  |  |             |   |
| ( ) = Momentary                   |           |   |  |  |  |             |   |



### Example Ordering Number

R4-B-BLK-BLK-YEL-E-F-2

\* To be used with the "J" circuit only

\*\* To be used with the "B" circuit only

Specifications subject to change without notice.



# SERIES R4 SWITCHES

## ROCKER SWITCHES - ILLUMINATED

TACT SWITCHES

NAVIGATION SWITCHES

PUSHBUTTON SWITCHES

TOGGLE SWITCHES

ROCKER SWITCHES

SLIDE SWITCHES

SNAP-ACTION SWITCHES

DIP SWITCHES

KEYLOCK SWITCHES

ROTARY SWITCHES

DETECTOR SWITCHES

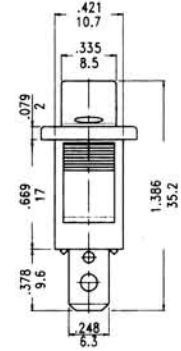
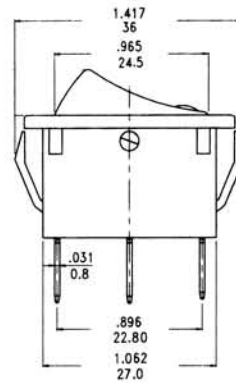
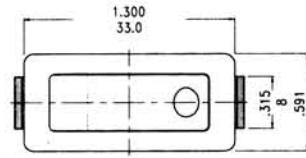
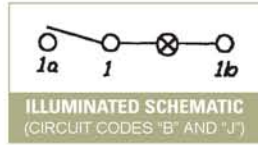
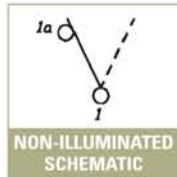
CAP OPTIONS

### SPST



| Circuit Code | POS 1 | POS 2 |
|--------------|-------|-------|
| A            | ON    | OFF   |
| B            | ON    | OFF   |
| F            | (ON)  | OFF   |
| H            | ON    | (OFF) |
| J            | ON    | OFF   |
| Term. Comm.  | 1-1a  | OPEN  |

( ) = Momentary

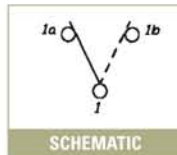


### SPDT



| Circuit Code | POS 1 | POS 2 | POS 3 |
|--------------|-------|-------|-------|
| C            | ON    | NONE  | ON    |
| D            | ON    | OFF   | ON    |
| E            | ON    | NONE  | (ON)  |
| G            | (ON)  | OFF   | (ON)  |
| I            | ON    | OFF   | (ON)  |
| Term. Comm.  | 1-1a  | OPEN  | 1-1b  |

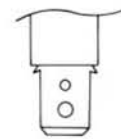
( ) = Momentary



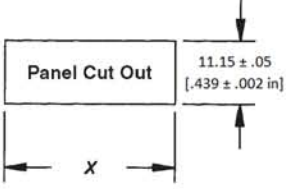
**NOTE: Illumination not available for SPDT versions.**

### TERMINATION OPTIONS

#### F FASTON



0.81 (.032) THK terminals designed for Quick Connect connectors available from AMP Industries, Harrisburg, PA 17105. (Or equivalent).



| Panel Thickness  | X                 |
|------------------|-------------------|
| .75-1.25         | 29.65 ± .05       |
| [.028 - .049 in] | [1.167 ± .002 in] |
| 1.25 - 2.00      | 30.15 ± .05       |
| [.049 - .079 in] | [1.187 ± .002 in] |
| 2.00 - 3.00      | 30.50 ± .05       |
| [.079 - .118 in] | [1.201 ± .002 in] |

**PANEL MOUNTING**

### MARKING OPTIONS

