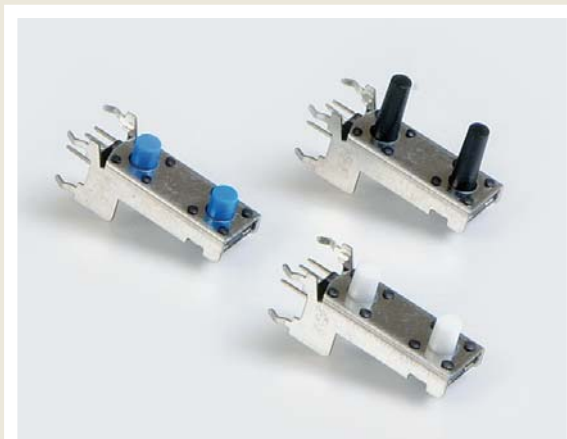




SERIES TL 53 SWITCHES

TACT SWITCHES - Dual



SPECIFICATIONS

Contact Rating:	50mA @ 12 VDC
Life Expectancy:	100,000 cycles
Contact Resistance:	100mΩ max., typical @ 2-4 VDC 100mA for both silver and gold plated contacts
Insulation Resistance:	100MΩ min.
Dielectric Strength:	250VAC
Actuation Force:	100 ± 50 gf, 160 ± 50 gf, 250 ± 50 gf
Operating Temperature:	-20°C to 70°C
Travel:	0.25 Typ

MATERIALS

Housing:	Polyester
Actuator:	Acetal
Cover:	Tin plated steel
Contacts:	Silver plated phosphor bronze
Terminals:	Silver plated brass

FEATURES & BENEFITS

- ▶ Two independent switches in a single package
- ▶ Stacked design
- ▶ Reliable dome contact technology

APPLICATIONS/MARKETS

- ▶ Telecommunications
- ▶ Consumer Electronics
- ▶ Audio/visual
- ▶ Medical
- ▶ Testing/instrumentation
- ▶ Computer/servers/peripherals



HOW TO ORDER

SERIES	MODEL NO.	ACTUATOR ("L" Dimension)	OPERATING FORCE	CONTACT MATERIAL
TL	53	(None) = 3.15mm A = 3.85mm B = 5.85mm C = 6.15mm D = 6.85mm E = 7.35mm G = 8.35mm H = 11.85mm	F100 F160 F260	Q = Silver

Operating Force

F100 = 100 ± 50gf
F160 = 160 ± 50gf
F260 = 260 ± 50gf

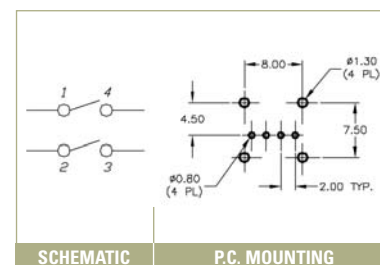
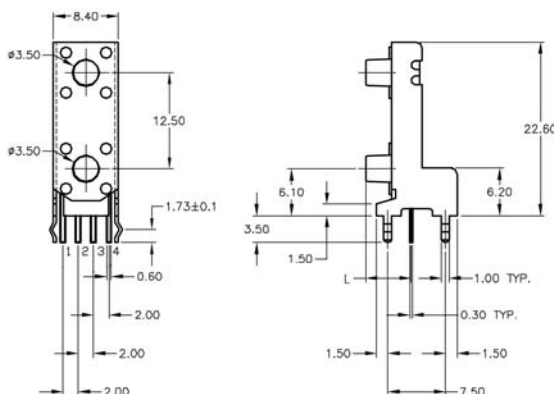


Example Ordering Number

TL-53-B-F100-Q

Specifications subject to change without notice.

TL 53



SCHEMATIC

P.C. MOUNTING