



## SERIES 341/391



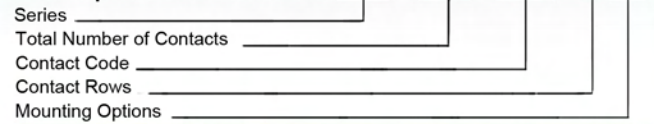
### FEATURES

- UL Recognized
- .100 (2.54) Contact Spacing x .140 (3.56) Row Spacing
- Accepts .062 (1.57) Nominal Thickness P.C. Board
- Low Profile Insulator Body .437 (11.10)
- Contact Termination Options include P.C Tail, Wire Wrap and Extender Board Bends
- Single or Dual Row Configurations
- Variety of Mounting Options
- Accepts Between Contact & In-Contact Polarizing Keys

### SPECIFICATIONS

- Insulator Material: Thermoplastic Polyester, UL 94V-0.
- Contact Material: Copper, Nickel, Tin Alloy CA-725
- Contact Plating: Gold on the Mating Area, Tin on the Contact Tails, Nickel Underplate
- Current Rating: 3 Amperes Continuous
- Contact Resistance: 10 Milliohms Maximum
- Dielectric Withstanding Voltage: 1200 V AC rms at Sea Level Between Adjacent Contacts
- Insulation Resistance: 5000 Megohms Minimum
- Operating Temperature: -65 to +105 Degrees C
- Insertion Force: 16 oz (4.45 N) Maximum per Contact Pair when Tested with a .070 (1.78) Thick Gauge
- Withdrawal Force: 1 oz (.28 N) Minimum per Contact Pair when Tested with a .054 (1.37) Thick Gauge

### Example Part Number 341 - 062 - 520 - 2 02



| Series | Insulator Colour |
|--------|------------------|
| 341    | Green            |
| 391    | Black            |

| Total Number of Contacts | Contact Rows |
|--------------------------|--------------|
| 005, 006, ..., 060       | Single Row   |
| 010, 012, ..., 120       | Dual Row     |

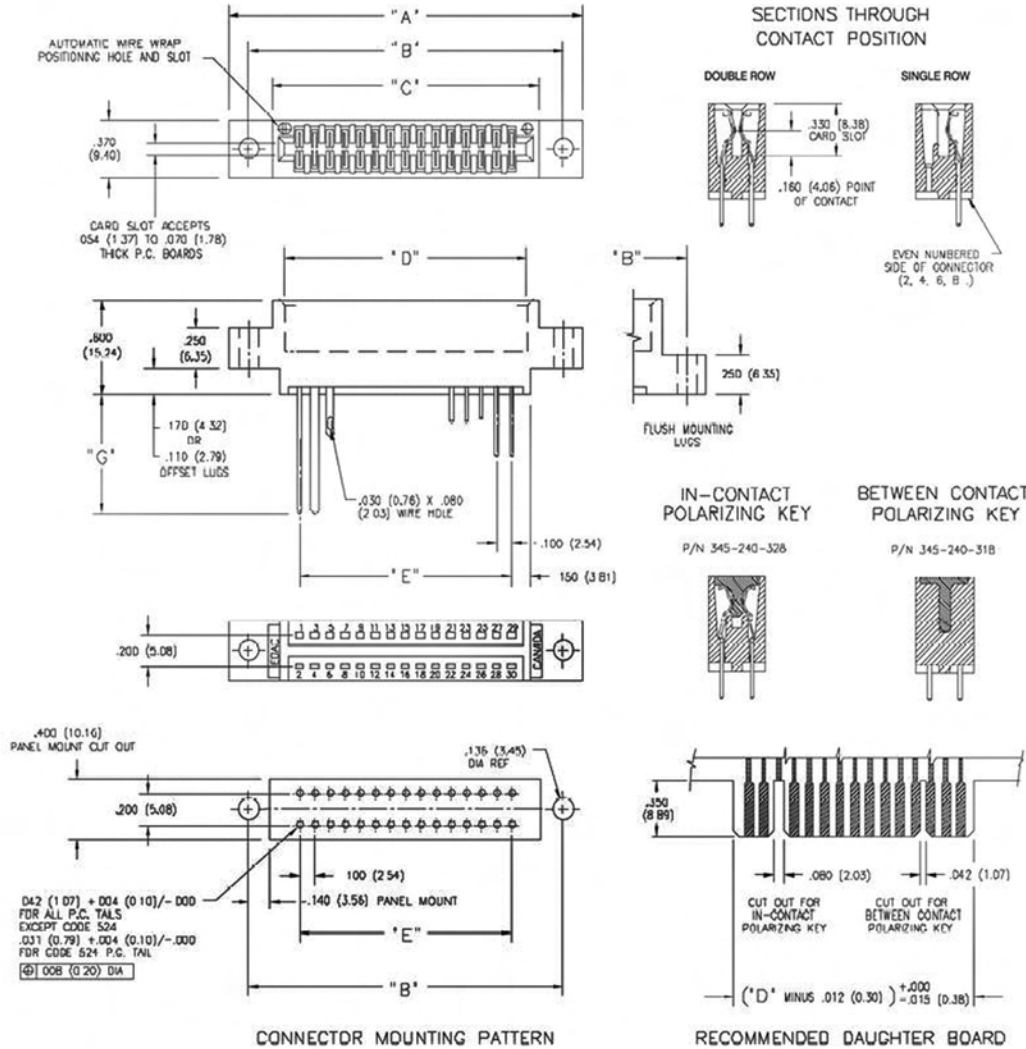
| Contact Code | Description & Tail Size                 | Tail Length "G" |
|--------------|---|-----------------|
| 500          | Wire Hole .050 x .013 (1.27 x 0.33)     | .220 (5.59)     |
| 520          | P.C. Tail .025 x .13 (0.64 x 0.33)      | .125 (3.18)     |
| 521          | P.C. Tail .025 x .13 (0.64 x 0.33)      | .260 (6.60)     |
| 522          | P.C. Tail .025 x .13 (0.64 x 0.33)      | .375 (9.53)     |
| 524          | P.C. Tail .025 x .13 (0.64 x 0.33)      | .100 (2.54)     |
| 555          | Extender Board Bend (Code 500 Contacts) |                 |
| 556          | Extender Board Bend (Code 521 Contacts) |                 |
| 560          | Extender Board Bend (Code 522 Contacts) |                 |

| Contact Rows | Description |
|--------------|-------------|
| 1            | Single Row  |
| 2            | Dual Row    |

| Mounting Options | Description                       |
|------------------|-----------------------------------|
| 01               | No Mounting Lugs                  |
| 02               | .128 (3.25) Dia. Mounting Holes   |
| 03               | .116 (2.95) I.D. Floating Eyelets |
| 04               | .156 (3.96) Dia. Mounting Holes   |
| 07               | M3-0.5 Metric Threaded Inserts    |
| 08               | #4-40 Unified Threaded Inserts    |

### Ordering Code Notes

- 1) All connector sizes up to 60 contacts single row / 120 contacts dual row are available upon request



| NUMBER OF CONTACTS |      | "A"   |          | "B"   |          | "C"   |          | "D"   |          | "E"   |          |
|--------------------|------|-------|----------|-------|----------|-------|----------|-------|----------|-------|----------|
| Single             | Dual | Inch  | (mm)     | Inch  | (mm)     | Inch  | (mm)     | Inch  | (mm)     | Inch  | (mm)     |
| 5                  | 10   | 1.335 | (33.91)  | 1.075 | (27.31)  | .760  | (19.30)  | .600  | (15.24)  | .400  | (10.16)  |
| 10                 | 20   | 1.835 | (46.61)  | 1.575 | (40.01)  | 1.200 | (30.00)  | 1.100 | (27.94)  | .900  | (22.86)  |
| 13                 | 26   | 2.125 | (54.23)  | 1.875 | (47.63)  | 1.560 | (39.62)  | 1.400 | (35.56)  | 1.200 | (30.48)  |
| 15                 | 30   | 2.335 | (59.31)  | 2.075 | (52.71)  | 1.760 | (44.70)  | 1.600 | (40.64)  | 1.400 | (35.56)  |
| 18                 | 36   | 2.635 | (66.93)  | 2.375 | (60.33)  | 2.060 | (52.32)  | 1.900 | (48.26)  | 1.700 | (43.18)  |
| 22                 | 44   | 3.035 | (77.09)  | 2.775 | (70.49)  | 2.460 | (62.48)  | 2.300 | (58.42)  | 2.100 | (53.34)  |
| 25                 | 50   | 3.335 | (84.71)  | 3.075 | (78.11)  | 2.760 | (70.10)  | 2.600 | (66.04)  | 2.400 | (60.96)  |
| 30                 | 60   | 3.835 | (97.41)  | 3.575 | (90.81)  | 3.260 | (82.80)  | 3.100 | (78.74)  | 2.900 | (73.66)  |
| 31                 | 62   | 3.935 | (99.95)  | 3.675 | (93.35)  | 3.360 | (85.34)  | 3.200 | (81.28)  | 3.000 | (76.20)  |
| 36                 | 72   | 4.435 | (112.65) | 4.175 | (106.05) | 3.860 | (98.04)  | 3.700 | (93.98)  | 3.500 | (88.90)  |
| 43                 | 86   | 5.135 | (130.43) | 4.875 | (123.83) | 4.560 | (115.82) | 4.400 | (111.76) | 4.200 | (106.68) |
| 50                 | 100  | 5.835 | (148.21) | 5.575 | (141.61) | 5.260 | (133.60) | 5.100 | (129.54) | 4.900 | (124.46) |
| 60                 | 120  | 6.835 | (173.61) | 6.575 | (167.01) | 6.260 | (159.00) | 6.100 | (154.94) | 5.900 | (149.86) |
| 72                 | 144  | 8.035 | (204.09) | 7.775 | (197.49) | 7.460 | (189.48) | 7.300 | (185.42) | 7.100 | (180.34) |

Dimensions of Other Connector Sizes are Listed