



EPCOS

Sample Kit 2009



Ring Core Chokes for Power Lines

Series B82721

www.epcos.com

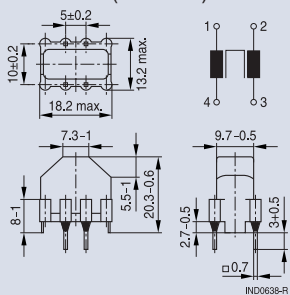
Series B82721

L_R	mH	39	27	27	10	6.8	3.3	1	0.7	0.4	0.2
I_R	A	0.4	0.5	0.4	0.7	1.2	1.5	2.0	4.0	3.6	6.0
$L_{\text{stray, typ}}$	μH	450	290	300	110	80	37	13	7	6	2.5
R_{typ}	m Ω	2000	1100	1700	550	280	180	80	30	35	15
T_R	$^{\circ}\text{C}$	40	60	40	60	40	40	40	40	40	40
UL/VEDE		yes	yes	yes	yes	yes	yes	yes	yes	yes	yes
Ordering code	B82721	A/K2401N020	K2501N022	A/K2401N021	A/K2701N020	A/K2122N020	A/K2152N001	A/K2202N001	A/K2402N020	A/K2362N001	K2602N020

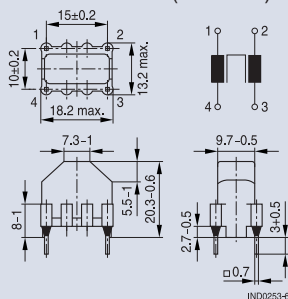
- Rated current: I_R at 50 Hz and T_R
- Rated voltage: 250 V AC (50/60 Hz)
- Higher inductance or intermediate values possible upon request
- Approx. 1% stray inductance for symmetrical interference suppression
- Higher rated current I_R available with series B82722 ... B82726
- Vertical version with lead spacing 5 x 10 mm available (B82721J*)

Dimensional drawings and pin configurations

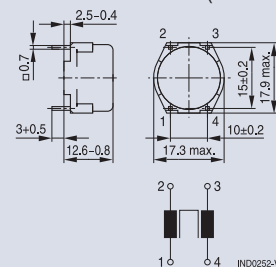
Vertical version (B82721J)



Vertical version (B82721K)

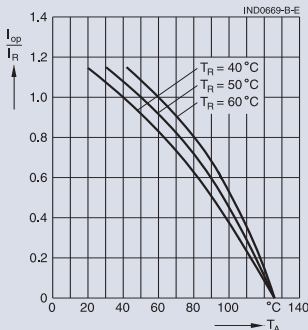


Horizontal version (B82721A)



Tolerances to ISO 2768-C unless otherwise noted. Dimensions in mm.

Current derating I_{op}/I_R versus temperature T



Impedance $|Z|$ versus frequency f

