

Ordering Table — Standard Toggle Switches

HOW TO ORDER YOUR DESIGN (Bold Face Type indicates items normally in Distributor Stock)

Following the table from left to right, the designer is able to specify the options wanted. The options are described and illustrated on pages 24-31. Refer to page 57 for mounting hardware.

To determine a part number select the options desired and fill in the boxes in the selection guides illustrated below.

Toggle Switch Selection Guide



| Series | Poles and Throw | | Circuits ¹⁰ | | | | Lever Options and Finishes | | | | Bushing Options | | Terminal Options ⁷ | | Contact Material | | Other Option | |
|--------|-----------------|------|------------------------|--------------------------|----------|-----------------|-------------------------------|------|-----------------------------|------|--|------|---|------|--------------------|------|-------------------------------------|------|
| | No. | Code | Keyway | | | Code | Type | Code | Finish | Code | Type | Code | Type | Code | Type | Code | Type | Code |
| A | SPDT | 1 | | | POS. "C" | | Lever Lock K Bushing Only | K1 | Bright Chrome ¹⁴ | 1 | Splashproof Lever ⁹ & Bushing Seal | CW | Right Angle PC ¹¹ | A | Gold/Nickel/Brass | B | Epoxy Sealed ⁷ Terminals | |
| | DPDT | 2 | ON | OFF | ON | 21 | .840 Bat | L0 | Stain Chrome | 2 | Splashproof ⁹ Lever Seal Only | CX | Vertical PC .100 Spacing | AV | Gold/Nickel/Silver | G | Anti-Rotation | P |
| | 3PDT | 3 | ON | NONE | ON | 23 | .640 Bat | L1 | Black ¹ | 3 | .280 Threaded | D | Vertical PC .150 Spacing | AV2 | Coin Silver | Q | Anti-Jam | |
| | 4PDT | 4 | ON | NONE | ON* | 26 | Long Mod Cap Short Mod Cap | L3 | Black Nylon ⁸ | 4 | .280 Smooth ² | D9 | Printed Circuit Terminals | C | | L | | |
| | | | | | | | | L4 | Red Nylon ⁸ | 5 | .350 Flatted With Shoulder | H3 | Right Angle ⁹ Same Throw | R | | | | |
| | | | | | | | | M | White Nylon ⁸ | 6 | .350 Keyway With Shoulder | K | Right Angle ⁹ Opposite Throw | R2 | | | | |
| | | | | | | | | P1 | | | Locking K1 Lever Only | K | PC & Support ⁶ | V30 | | | | |
| | | | | | | | | P3 | | | 15/32 Dia. ¹² | T | PC & Support ⁶ | V40 | | | | |
| | | | | | | | | P4 | | | Splashproof Lever ¹² 15/32 & Panel Seal | TW | PC & Support ⁶ | V60 | | | | |
| | | | | | | | | S | | | 15/32 Splashproof ¹² Lever Seal Only | TX | PC & Support ⁶ | V70 | | | | |
| | | | | | | | | T | | | .350 Threaded | Y | .750 Wire Wrap | W | | | | |
| | | | | .410 Bat | S | .964 Wire Wrap | W1 | | | | | | | | | | | |
| | | | | .468 Large ¹³ | T1 | .425 Wire Wrap | W3 | | | | | | | | | | | |
| | | | | .687 Large ¹³ | T | 1.062 Wire Wrap | W4 | | | | | | | | | | | |
| | | | | | | Solder Lugs | Z | | | | | | | | | | | |
| | | | | | | Quick Connect | Z3 | | | | | | | | | | | |

*Momentary Contact

- ¹ Available on S, M and P3 only.
- ² Add .070 to lever length when using these bushings.
- ³ Available with S, M, L0, L1, L2, L3, L4 lever options. Consult factory for availability.
- ⁴ Standard on P1, P3, P4 and K1 lever options. Available on all other levers except T & T1.
- ⁵ These circuits are **NOT** available with the following 3 and 4 pole options: A, AV, AV2, V30, V40, V60 and V70.
- ⁶ 1 and 2 pole only.
- ⁷ Epoxy seal standard on all terminal options.

- ⁸ Available only with L3 and L4 levers.
- ⁹ Available in 1 pole only.
- ¹⁰ See page 58 for construction detail, wiring and electrical diagrams.
- ¹¹ 1, 2 and 3 pole only.
- ¹² Available on T or T1 lever options only.
- ¹³ Available on T, TW, and TX bushing options. (Bright chrome only.)
- ¹⁴ Not available on K1 lever.
- ¹⁵ Same as B, G and Q respectively except terminals brass with tin nickel alloy over nickel plate. Consult plant for availability.

EXAMPLES:

A232L01YW1B = DPDT toggle switch with an ON-ON-ON circuit, .840" long lever in a bright chrome finish, .350 threaded bushing, .964" long wire wrap terminals, gold/brass contacts and epoxy sealed terminals.

SPECIFICATIONS:

Contact Ratings —

Letter codes G and Q — 6 amp at 125 VAC, 3 amp @ 250 VAC (U.L. recognized, CSA certified) or 6 amp at 28 VDC resistive.
Letter codes B and G — 0.5. volt-amp (VA) maximum @ 28 V maximum (AC or DC).

Life Under Load — 60,000 make-and-break cycles — resistive load only.

Initial Contact Resistance — 10 milliohms maximum 3 VDC, 100 ma for both silver and gold plated contacts.

Insulation Resistance — 1 & 2 pole —1,000 megohms, min.
3 & 4 pole —1,000 megohms, min.

Dielectric Strength — 1,000 volts rms at sea level.

Bushing Strength — 12 pound-inches without physical damage to switch.

Weight (including hardware) — SP 0.19 oz.; DP 0.23 oz.; 3-pole 0.28 oz.; 4-pole 0.32 oz.

MATERIALS:

Base (body) — 1- and 2-pole —Diallyl Phthalate (DAP).
3- and 4-pole — high strength phenolic.

Lever (toggle) — Brass, chrome plated.

Flat Lever — Brass, satin chrome finish.

Locking lever cap — Anodized aluminum.

Bushing — Brass, nickel plated.

Clamp (frame) — Stainless steel.

Support brackets — Steel, tin plated.

Switching Contacts and Rockers —

Letter Code B — gold/nickel/brass

Letter Code G — gold/nickel/silver

Letter Code Q — Coin silver

Center Terminal

Letter Codes B, G — Gold flash/nickel/brass

Letter Code Q — Silver plated brass.

Hardware — See page 55-57.

Toggle Switches — Base Dimensions and Lever Options

APPROXIMATE BASE DIMENSIONS



TOGGLE LEVER OPTIONS



Toggle Lever Options — Contd.

| | | | |
|----------------------------------|----------------------------------|----------------------------------|----------------------------------|
| <p>M Short (.200")</p> | <p>P1 Flatted (.840")</p> | <p>P3 Flatted (.448")</p> | <p>P4 Flatted (.250")</p> |
| <p>S Std. Bat (.410")</p> | <p>T Large Toggle</p> | <p>T1 Large Toggle</p> | |

BUSHING OPTIONS

| | | |
|---|--|---------------------------------------|
| <p>CW Splashproof Sealed Lever and Panel Seal</p> <p>CW = Flatted bushing</p> | <p>D D9 Threaded Smooth (No Keyway)</p> | |
| <p>H High Torque Flatted with Shoulder</p> <p>1/4-40 N0 MFG. OPTION RELIEF OR IMPERF. THD.</p> | <p>H3 High Torque</p> <p>.228 .225 OVER FLAT</p> | <p>P Anti-Rotation</p> |
| <p>TW Splashproof Sealed Lever and Panel Seal</p> | <p>OX Y Y9 Threaded with Lever Seal Threaded Smooth (No Keyway)</p> | <p>Y5 Long Bushing (.437")</p> |

K Refer to K1 lever drawing for dimensions.

T&TX Refer to T or T1 lever drawing for dimensions.

Note: For hardware refer to pages 55-57.

| | | | | | | |
|---------------------------------|---------------------------|----------------------------|----------------------------|----------------------------|--------------------------|---|
| <p>C Printed CIRCUIT</p> | <p>W Wire-Wrap</p> | <p>W1 Wire-Wrap</p> | <p>W3 Wire-Wrap</p> | <p>W4 Wire-Wrap</p> | <p>Z STANDARD</p> | <p>Z3 Quick CONNECT</p> <p>Mating Receptacle from AMP SPECIAL IND., P.O. Box 984, Paoli, Pa. 19301 Amp P/N single piece 61454 series, strip from 60900</p> |
|---------------------------------|---------------------------|----------------------------|----------------------------|----------------------------|--------------------------|---|

NOTE: Wire-Wrap is a registered trademark of the Gardner-Denver Company.

TERMINATION/MOUNTING OPTIONS

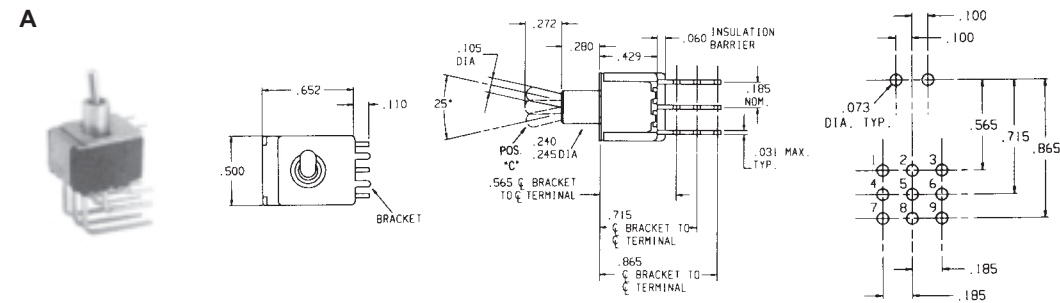
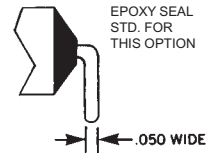


One Pole

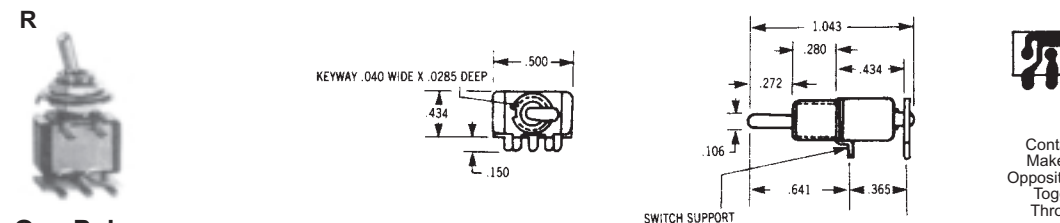


Two Pole

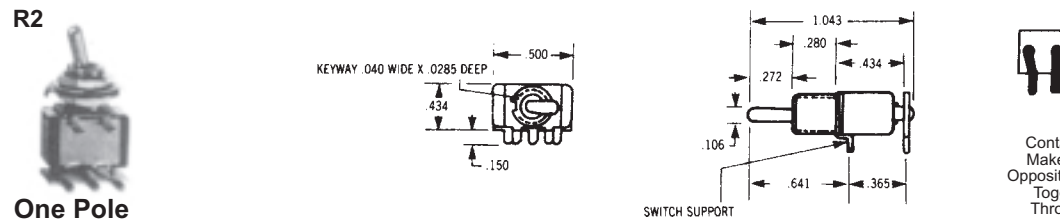
Right Angle P.C. Terminal



Three Pole



One Pole



One Pole

Termination/Mounting Options

| | |
|------------|---|
| AV1 | w/.100" terminal spacing |
| AV2 | w/.150" terminal spacing (pictured below) |



ONE POLE Epoxy sealed P.C. terminals are supplied as standard for these options.

| | |
|------------|---|
| AV1 | w/.100" terminal spacing |
| AV2 | w/.150" terminal spacing (pictured below) |



TWO POLE Epoxy sealed P.C. terminals are supplied as standard for these options.

| | |
|------------|---|
| AV | w/.100" terminal spacing |
| AV2 | w/.150" terminal spacing (pictured below) |



THREE POLE Epoxy sealed P.C. terminals are supplied as standard for these options.

| | |
|------------|---|
| AV | w/.100" terminal spacing |
| AV2 | w/.150" terminal spacing (pictured below) |



FOUR POLE Epoxy sealed P.C. terminals are supplied as standard for these options.

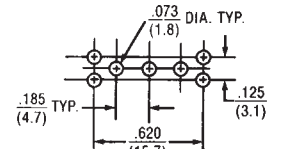
V30



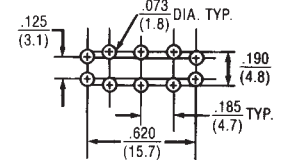
ONE POLE



TWO POLE



1 Pole P.C. Mounting



2 Pole P.C. Mounting

EPOXY SEALED P.C. TERMINALS ARE SUPPLIED AS STANDARD FOR THESE OPTIONS

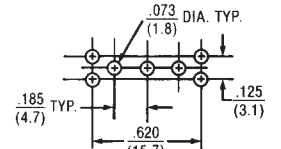
V40



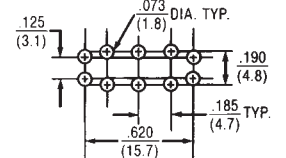
ONE POLE



TWO POLE



1 Pole P.C. Mounting



2 Pole P.C. Mounting

EPOXY SEALED P.C. TERMINALS ARE SUPPLIED AS STANDARD FOR THESE OPTIONS

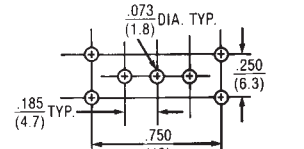
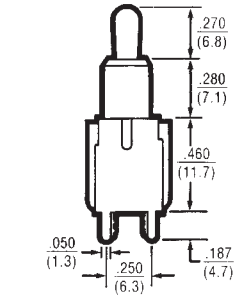
V60



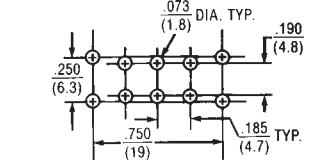
ONE POLE



TWO POLE



1 Pole P.C. Mounting



2 Pole P.C. Mounting

EPOXY SEALED P.C. TERMINALS ARE SUPPLIED AS STANDARD FOR THESE OPTIONS

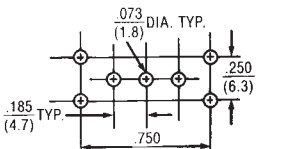
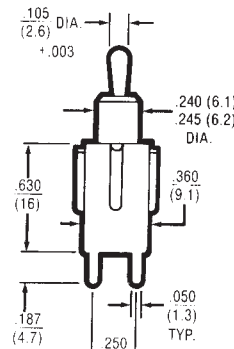
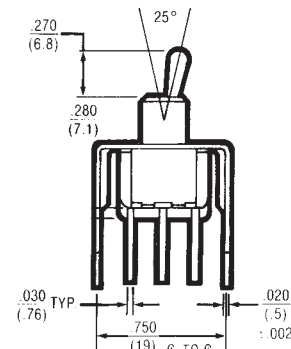
V70



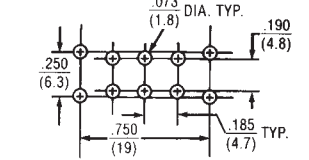
ONE POLE



TWO POLE



1 Pole P.C. Mounting



2 Pole P.C. Mounting

EPOXY SEALED P.C. TERMINALS ARE SUPPLIED AS STANDARD FOR THESE OPTIONS