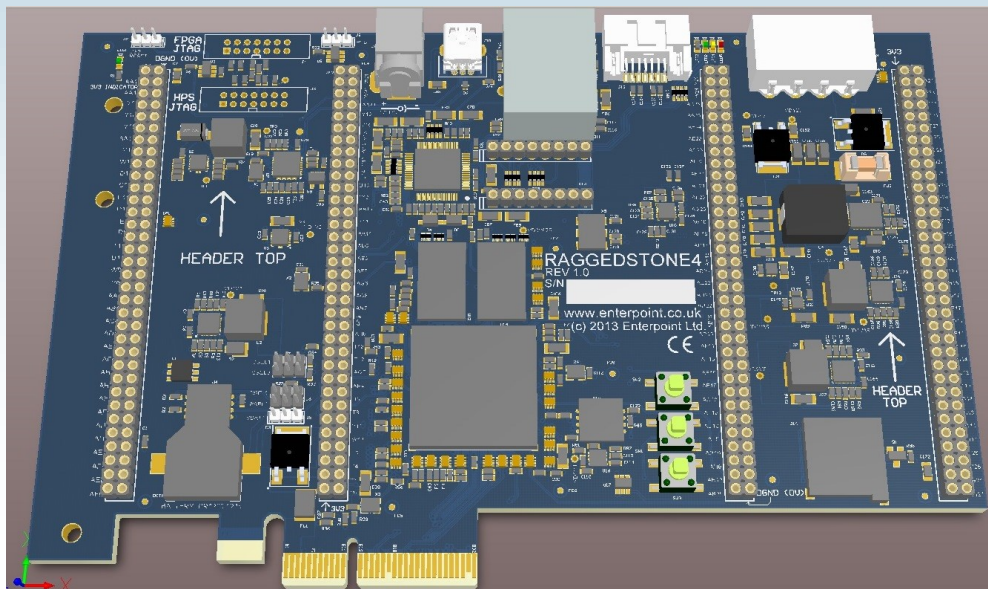




Altera® SOC SOLUTIONS



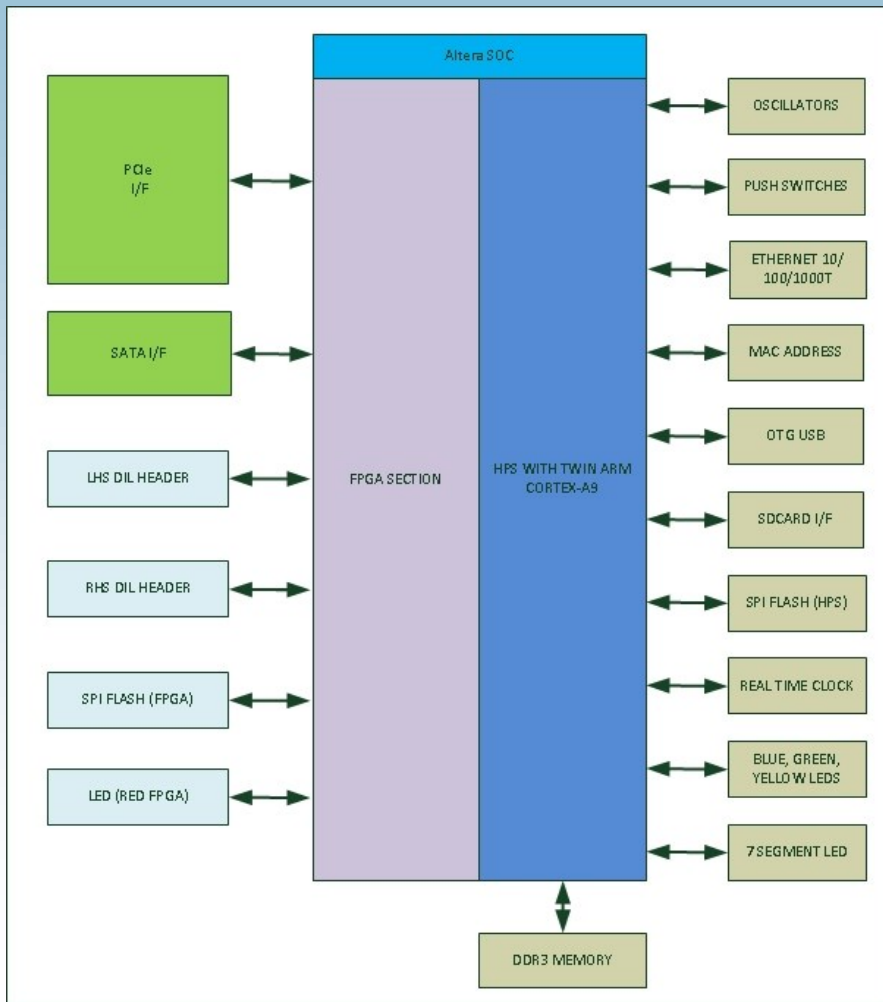
Raggedstone4

X4 PCI Express™ Form Factor	1 x H/W MAC Address
X4 Gen1(Gen 2 possible) PCIe Interface	1 x OTG USB I/F
Altera® SOC with twin ARM® Cortex™-A9	1 x Real Time Clock
Linux™ and Android™ (In progress) operating system support	1 x 7 Segment LED Display
HPS boot from SPI Flash or Sdcard	2 x DIL Header for add-on modules with 3.3V available for module power.
Header for remote Reset Switches	2 x Push Switches
110K LE of Programmable Logic	4 LEDs
1 GByte DDR3	1 x MMC/SD® Card Socket
2 x SPI Flash	Single 12V power input taken from 2.1MM Jack, Disk drive Connector or PCIe Interface
1 x 10/10/1000 Ethernet	

Raggedstone4 is aimed at applications that need a hardware acceleration function, a custom I/O or interface requirement, a high accuracy interface timing function, high bandwidth input to a PC, or any combination of these features.

Raggedstone4 normally operates inside a host PC plugged into a PCI Express slot. However it can also run as a standalone board powered through the 2.1mm jack or disk drive connector with a single 12V input.

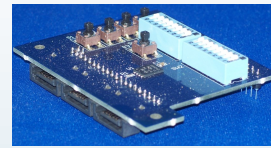
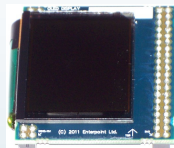
The marriage of the powerful dual core ARM® Cortex™-A9 processor, a user programmable FPGA fabric and Linux™ or Android™ operating systems make the Raggedstone4 a very cost effective, high performance, low power, computing platform.



Raggedstone4 Block Diagram

DIL Header Expansion

Enterpoint's DIL Module range offers a number of interface expansion options. Depending on the sizes of modules fitted one or more modules can be fitted in each of the Raggedstone4 DIL Headers. A wide range of module functions are available including ADC, DAC, RS232, RS485, Opto-Isolated I/O, Touchscreen LCD and camera module.



OEM and Customised Options

As with all Enterpoint products the Raggedstone4 design can either be offered in a custom BOM configuration or even a fully customised derivative product to suit individual customer needs. We can offer customised options for customers with very low annual volumes from 10 units+. We can also supply large volumes if required.

We can also offer an ultra-fast turn design and manufacture service for custom DIL Header modules.

If any of these custom options are of interest please contact us on boardsales@enterpoint.co.uk.



Enterpoint Ltd.

Unit1, Howsell Road Industrial Estate, Malvern, UK

Tel- +44 (0) 121 288 3945

Email- boardsales@enterpoint.co.uk

Web:- www.enterpoint.co.uk