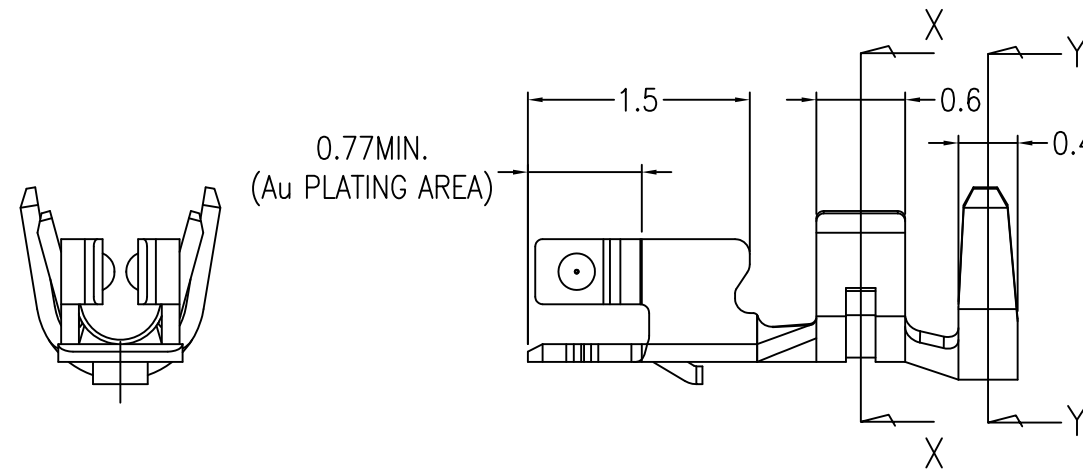
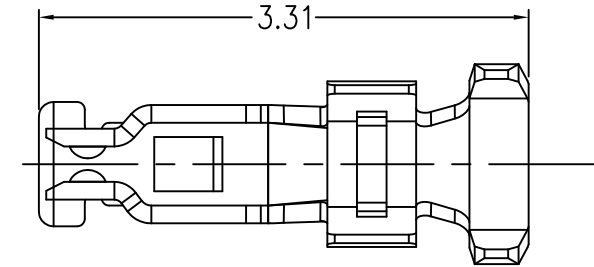
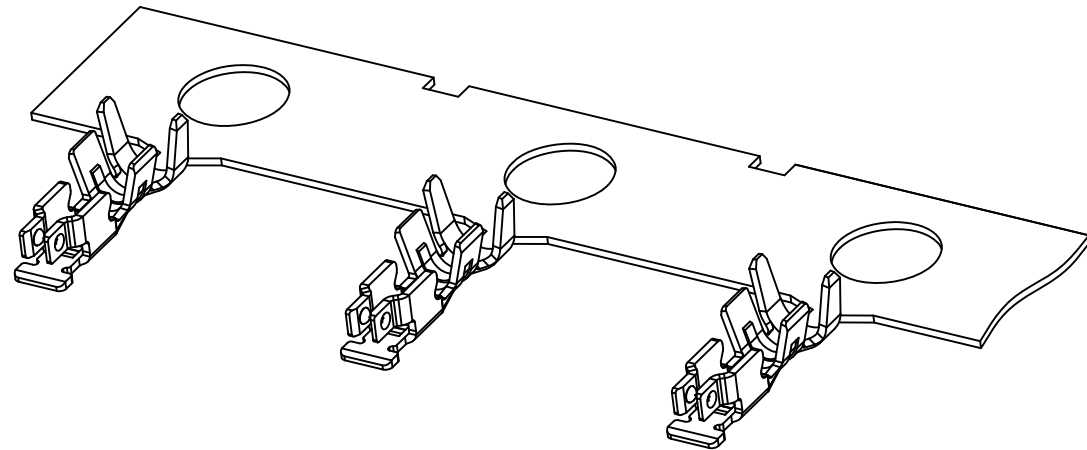
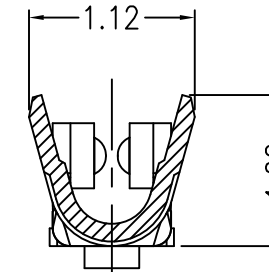


PRODUCT NO.

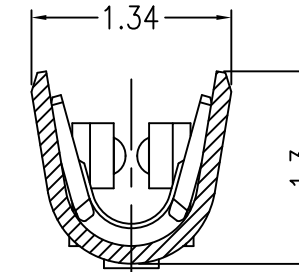
10125837-001GLF



0.77MIN.
(Au PLATING AREA)



CROSS SECTION X-X
(CONDUCTOR BARREL)



CROSS SECTION Y-Y
(INSULATION BARREL)

- NOTE
1. APPLICABLE HOUSING ; 10125836-*****
 2. MATERIAL ; COPPER ALLOY
 3. PLATING ; Au PLATING
Ni UNDER PLATING

Hitachi Metals,LTD : UL STYLE 10368 (HALOGEN FREE AS RoHS COMPLIED WIRES)

	SPECIFICATIONS				
	AWG#	STRANDING (No./mm)	SECT. AREA (mm ²)	INSULATION O.D (mm)	RATING
UL 10368 STRANDED WIRE	28	7/0.127	0.089	0.88	105 deg. C , 300V
	30	7/0.102	0.057	0.8	105 deg. C , 300V

SUZHOU RENDE SCIENCE AND TECHNOLOGY : UL STYLE 10368 (HALOGEN FREE AS RoHS COMPLIED WIRES)

	SPECIFICATIONS				
	AWG#	STRANDING (No./mm)	SECT. AREA (mm ²)	INSULATION O.D (mm)	RATING
UL 10368 STRANDED WIRE	30	7/0.1	0.055	0.75	105 deg. C , 300V

CHAIN	10125837-001GLF
FORM	PRODUCT NO.

mat'l. code ---				surface ISO 1302	tolerance ISO 406 ISO 1101	projection 	product family	CODE JP	
ltr	description	ecn no	dr	date	tolerances unless otherwise specified	MM ←→ scale 20:1	title		
A	RELEASED		Y.K	2013-10-25	angles 0°±2'		CRIMP TERMINAL FOR 1.2mm PITCH WTB CONNECTOR		
					linear 0.X ±0.3 0.XX ±0.3 0.XXX ±0.3		dwg no	sheet 1 of 4	size
			dr	Y.KAMEDA	2013-10-25		10125837		A3
			enr	Y.KAMEDA	2013-10-25		type		Product Customer Drawing
			chr	H.SUZUKI	2013-10-25		Rev.		A
			appd	N.SASAME	2013-10-25		sheet index		revision sheet

PRODUCT NO.

10125837-001GLF

1

2 3

4

5

6

PULL OUT DIRECTION

A

B

C

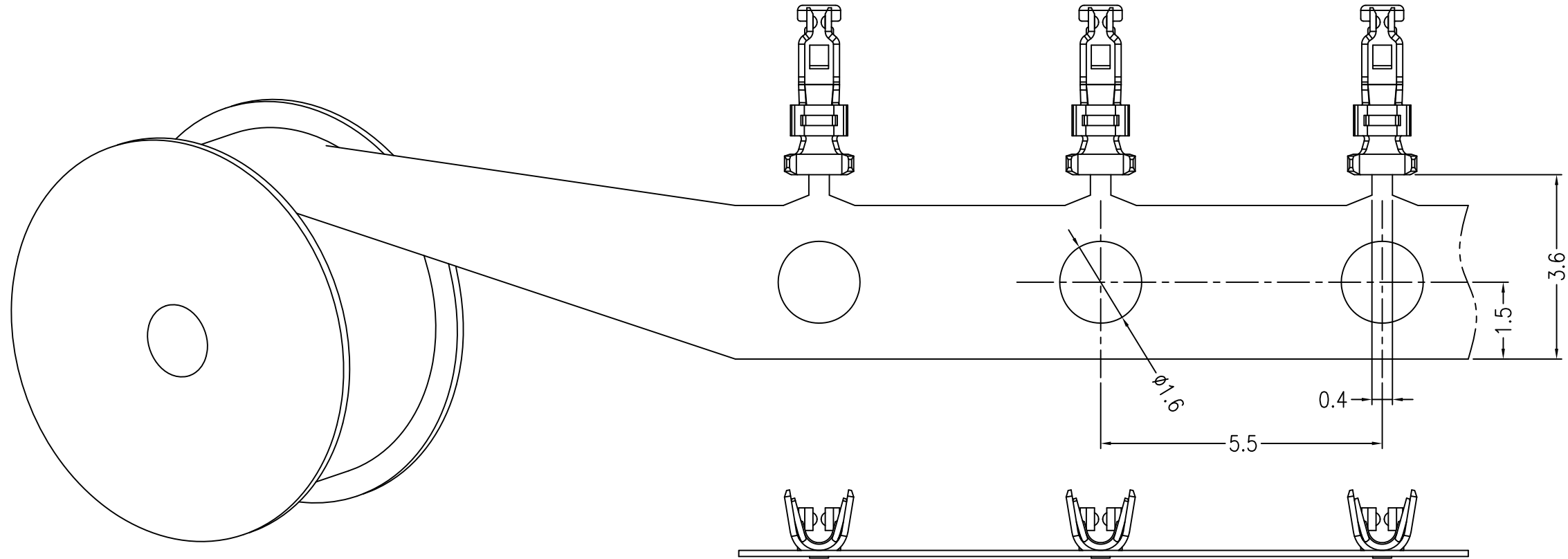
D

A

B

C

D



FCI
FCIconnect.com

Copyright FCI

CHAIN 10125837-001GLF

FORM PRODUCT NO.

mat'l. code ---			surface ISO 1302 ✓		tolerance ISO 406 ISO 1101		projection MM scale 10:1		product family		CODE JP
ltr description			ecn no	dr	date		tolerances unless otherwise specified		title CRIMP TERMINAL FOR 1.2mm PITCH WTB CONNECTOR		
A	RELEASED			Y.K	2013-10-25		angles	linear	0.X ±0.3	dwg no	
							0°±2'		0.XX ±0.3	sheet 2 of 4	
									0.XXX ±0.3	size	
					dr	Y.KAMEDA	2013-10-25	FCI		10125837	
				engr	Y.KAMEDA	2013-10-25	A3				
				chr	H.SUZUKI	2013-10-25	Product Customer Drawing				
				appd	N.SASAME	2013-10-25	Rev.				
sheet index		revision sheet								A	

PRODUCT NO.

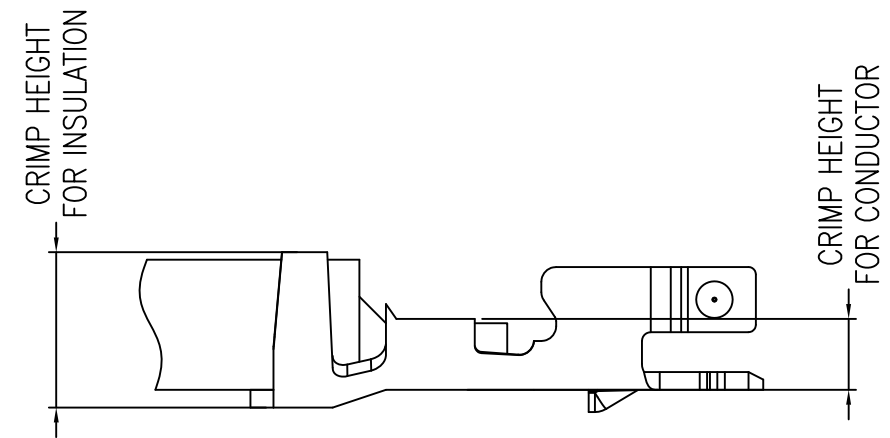
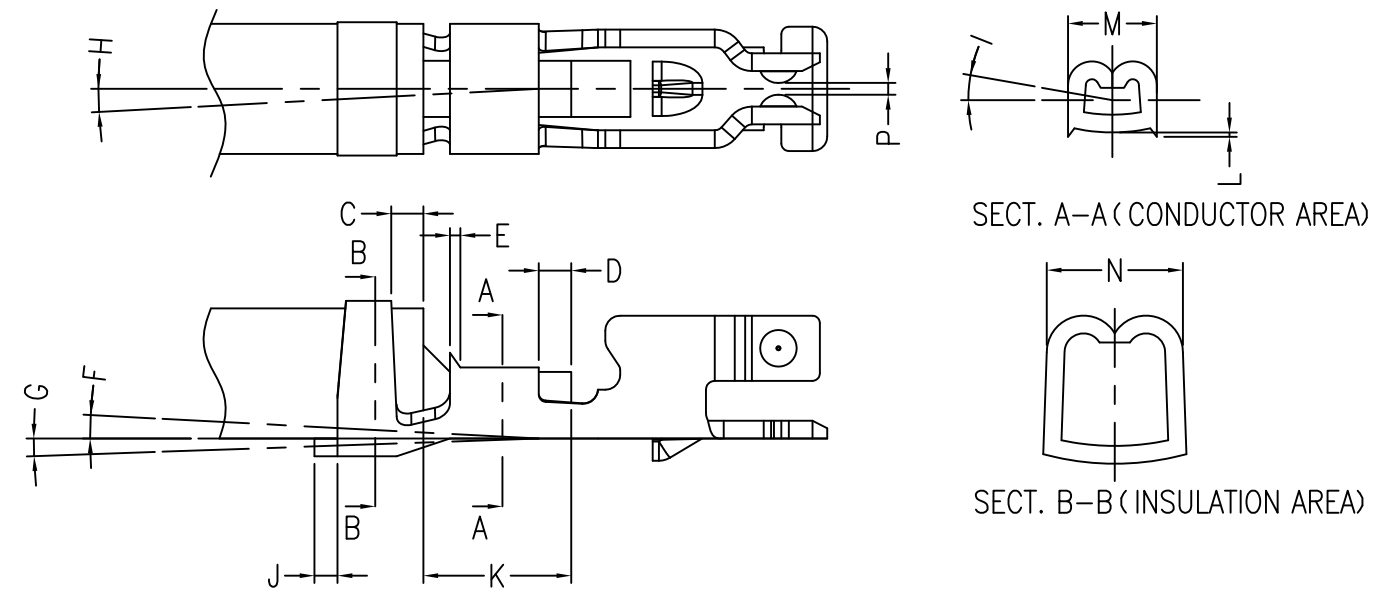
10125837-001GLF

SPECIFICATION

ITEM		REQUIREMENT	NOTE
INSULATION POSITION	C	0.1~0.25mm (REF.)	
EXTRUDED WIRE LENGTH	D	0.1~0.5mm (REF.)	
BELL MOUTH	E	0.1~0.25mm (REF.)	
BEND UP	F	3° MAX.	
BEND DOWN	G	2° MAX.	
TWISTING	H	±3° MAX.	
ROLLING	I	±3° MAX.	
CUT OFF TAB LENGTH	J	0.1mm MAX.	
WIRE STRIP LENGTH	K	1~1.3mm (REF.)	BEFORE STRIP LENGTH
HEIGHT OF CUT-OUT TEETH	L	0.05mm MAX.	
WIDE (CONDUCTOR BARREL)	M	0.95mm MAX.	
WIDE (INSULATION BARREL)	N	0.95mm MAX.	
CONTACT GAP	P	0.08mm (REF.)	

AFTER CRIMPING, THE CRIMPED AREA SHOULD BE AS BELOW TABLE.

	CRIMP CONDITION			
	WIRE SIZE (AWG)	CRIMP HEIGHT		CRIMP STRENGTH (N)
		CONDUCTOR SIDE (mm)	INSULATION SIDE (mm) (REFERENCE)	
UL 10368 STRANDED WIRE (HITACHI METALS)	#28	0.44~0.48	1.0~1.05	10
	#30	0.43~0.48	0.95~1.0	5
UL 10368 STRANDED WIRE (SUZHOU RENDE SCIENCE AND TECHNOLOGY)	#30	0.42~0.47	0.91~0.95	5



CHAIN	10125837-001GLF
FORM	PRODUCT NO.

mat'l. code		surface		tolerance		projection		product family		CODE	
---		ISO 1302		ISO 406		MM		10125837-001GLF		JP	
ltr		description		ecn no		dr		date		title	
A		RELEASED				Y.K		2013-10-25		CRIMP TERMINAL FOR 1.2mm PITCH WTB CONNECTOR	
										sheet 3 of 4	
										size	
										A3	
										type	
										Product Customer Drawing	
sheet index		revision sheet								Rev.	
										A	



Copyright FCI.

1

2 3

4

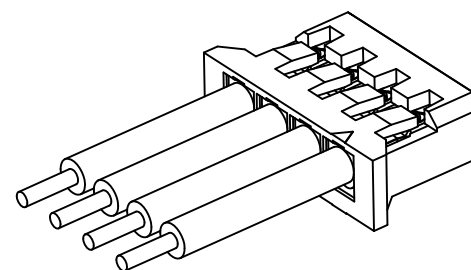
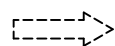
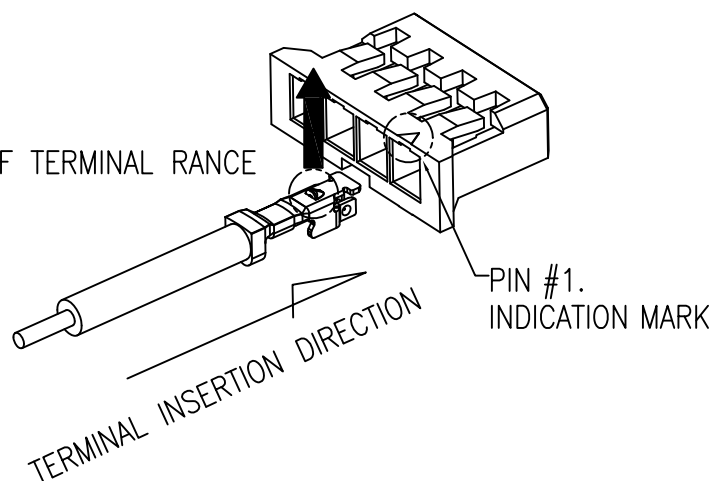
5

6

*TERMINAL INSERTION DIRECTION

AFTER TERMINAL INSERTION

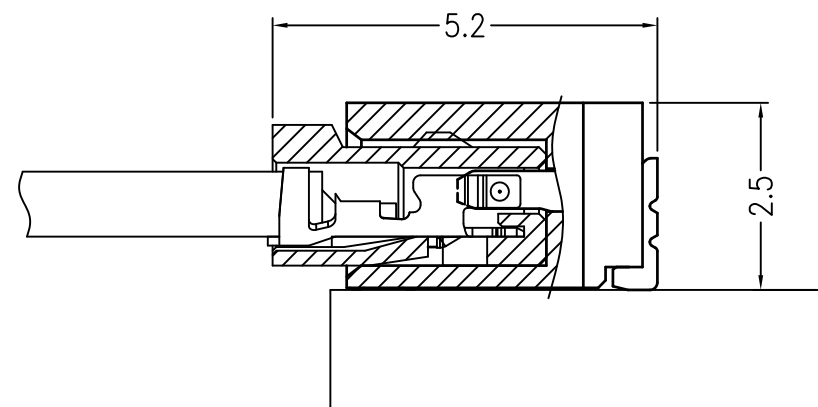
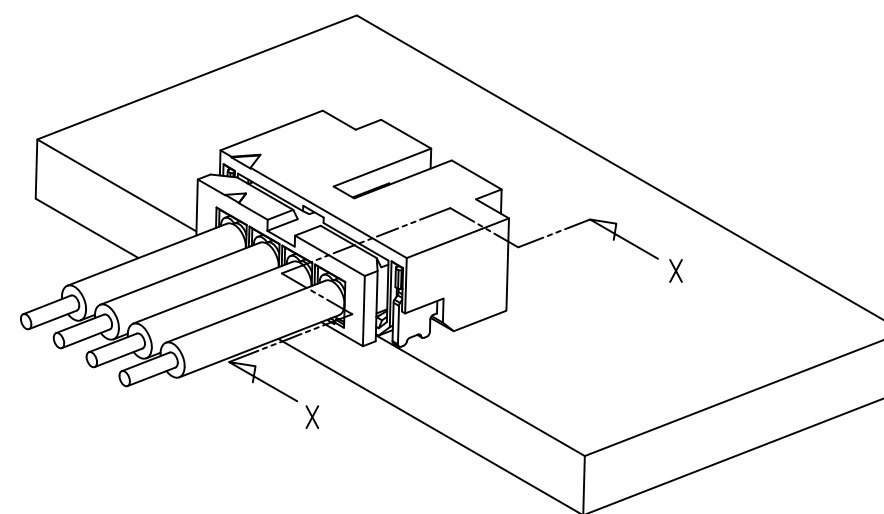
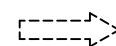
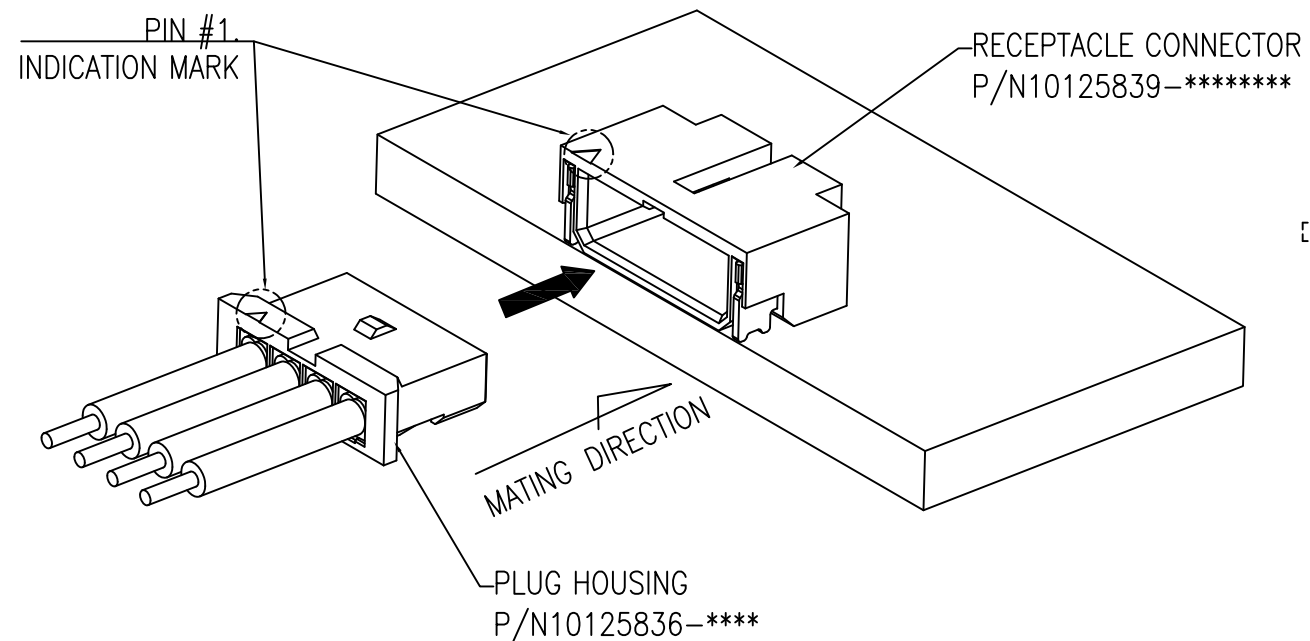
DIRECTION OF TERMINAL RANGE



*NOTE THE DIRECTION OF THE TERMINAL RANGE WHEN THE TERMINAL ENTER THE HOUSING. (REFER TO THE UPPER FIGURE)

BEFORE MATING CONDITION

AFTER MATING CONDITION



SECTION X-X (SCALE: 10:1)



FCIconnect.com

Copyright FCI.

mat'l. code ---				surface ISO 1302 ✓		tolerance ISO 406 ISO 1101		projection 		product family		CODE JP
ltr	description	ecn no	dr	date	tolerances unless otherwise specified			MM 	title			
A	RELEASED		Y.K	2013-10-25	angles	linear	0.X ±0.3		CRIMP TERMINAL			
					0°±2'		0.XX ±0.3		FOR 1.2mm PITCH WTB CONNECTOR			
					dr	Y.KAMEDA	2013-10-25	FCJ 	dwg no		sheet 4 of 4	size
					enr	Y.KAMEDA	2013-10-25		10125837			A3
					chr	H.SUZUKI	2013-10-25		Product Customer Drawing		Rev.	
					appd	N.SASAME	2013-10-25				A	
sheet index	revision sheet											

1

2

3

4

5

6