
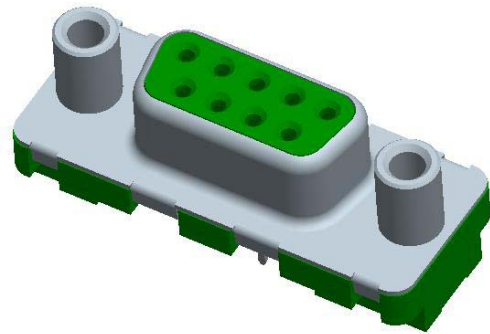
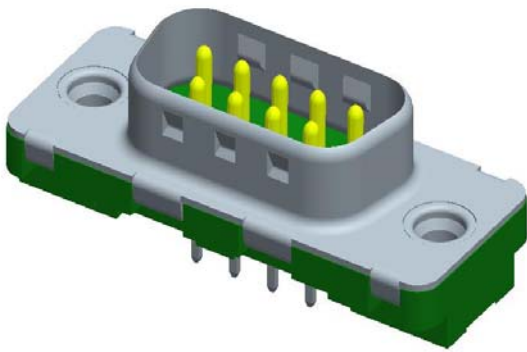
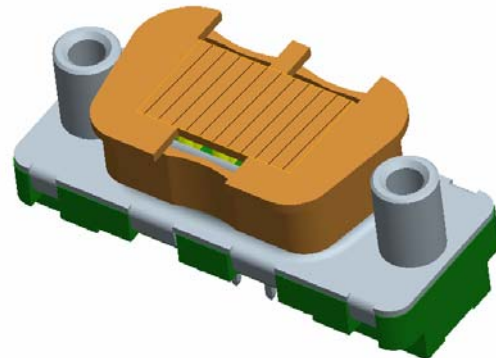
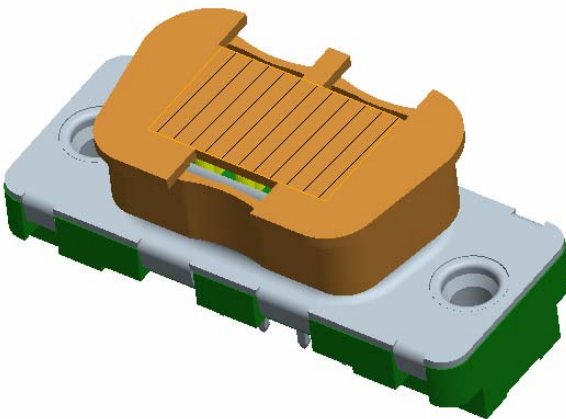


NUMBER GS-12-372	TYPE PRODUCT SPECIFICATION		
TITLE SUB DELTA D PIP FCI P/N : D--P/S24A6R---LF & D-P/S24B6R---LF		PAGE 1 of 6	REVISION C
		AUTHORIZED BY H. LEGALLIC	DATE 07/06/08
CLASSIFICATION UNRESTRICTED			


SUD DELTA D PIP



For Hand Placing or Gripper



For vacuum nozzle

NUMBER GS-12-372	TYPE PRODUCT SPECIFICATION		
TITLE SUB DELTA D PIP FCI P/N : D--P/S24A6R---LF & D-P/S24B6R---LF		PAGE 2 of 6	REVISION C
		AUTHORIZED BY H.LEGALLIC	DATE 07/06/08
CLASSIFICATION UNRESTRICTED			

CONTENTS

1. Scope 3

2. Product description 3

 2.1 General 3

 2.2 Design and construction 4

 2.3 Materials and plating 4

 2.3.1 Housing dielectric material 4

 2.3.2 Terminal material 4

 2.3.3 Terminal Plating 4

 2.3.4 Shell material 4

 2.3.5 Shell Plating 4

 2.3.6 Accessory Material 5

 2.3.7 Accessory Plating 5

 2.3.8 CAP Material 5

3. Characteristics 5

 3.1 Characteristics and Test sequence 5

 3.2 Cycles 5

 3.3 Temperature 5


 3.4 Accessories 5

4. Reflow process 5

 Lead free soldering 5

5. Packaging 5

6.Revision record 6

NUMBER GS-12-372	TYPE PRODUCT SPECIFICATION		
TITLE SUB DELTA D PIP FCI P/N : D--P/S24A6R---LF & D-P/S24B6R---LF		PAGE 3 of 6	REVISION C
		AUTHORIZED BY H.LEGALLIC	DATE 07/06/08
CLASSIFICATION UNRESTRICTED			

1. Scope

This product specification covers the requirements of a SUB DELTA D PIP.

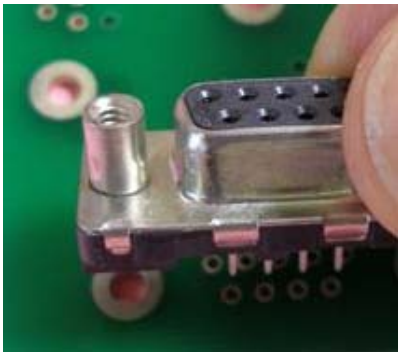
For Product Pick Process: Hand Placing / Gripper / Vacuum Nozzle

2. Product description

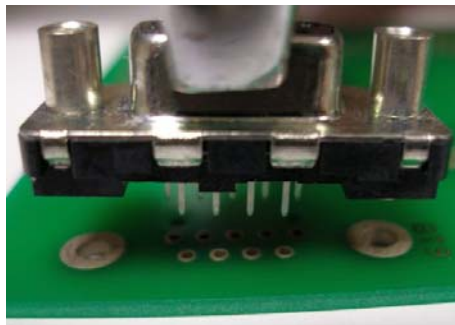
2.1 General

PRODUCT LEAD FREE IN ACCORDANCE TO ROHs 2002/EC/95
UL 94 V0: E118235(R)

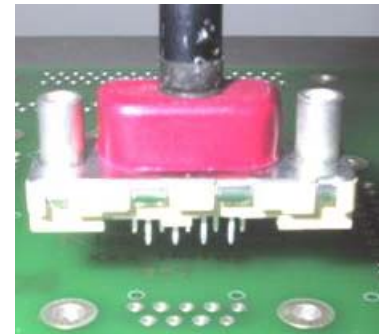
FOR EXEMPLE




HAND PLACING



GRIPPER



VACUUM NOZZEL

NUMBER GS-12-372	TYPE PRODUCT SPECIFICATION		
TITLE SUB DELTA D PIP FCI P/N : D--P/S24A6R---LF & D-P/S24B6R---LF		PAGE 4 of 6	REVISION C
		AUTHORIZED BY H.LEGALLIC	DATE 07/06/08
CLASSIFICATION UNRESTRICTED			

2.2 Design and construction

The connector shall be of design, construction and physical dimensions as specified on the applicable product customer drawings:

Code 24A

Hand Placing: **C01-8646-0878 / C01-8646-0879**
 Gripper: **C01-8646-0876 / C01-8646-0877**
 Vacuum Nozzle: **C01-8646-0874 / C01-8646-0875**

Code 24B

Hand Placing: **C01-8646-0883 / C01-8646-0884**
 Gripper: **C01-8646-0885 / C01-8646-0886**
 Vacuum Nozzle: **C01-8646-0887 / C01-8646-0888**

2.3 Materials and plating

2.3.1 Housing dielectric material

Plastic raw material: LCP, 30% glass fiber, UL94 V-O rating
 Black colour

2.3.2 Terminal material

Copper Alloy CuSN8

2.3.3 Terminal Plating


Gold over Nickel on mating area metal
 Tin over Nickel on termination

2.3.4 Shell material

Steel

2.3.5 Shell Plating

Ni over Cu

NUMBER GS-12-372	TYPE PRODUCT SPECIFICATION		
TITLE SUB DELTA D PIP FCI P/N : D--P/S24A6R---LF & D-P/S24B6R---LF		PAGE 5 of 6	REVISION C
		AUTHORIZED BY H.LEGALLIC	DATE 07/06/08
CLASSIFICATION UNRESTRICTED			

2.3.6 Accessory Material

Brass

2.3.7 Accessory Plating

Pure Tin over Ni + Cu

2.3.8 CAP Material

PA4.6

3. Characteristics

3.1 Characteristics and Test sequence

In accordance with:
DIN 41 652 and CEI 512-
Other LNZ4404

3.2 Cycles

500Min accordance to DIN 41652

3.3 Temperature

Temperature Range: -50°C to 125 °C

3.4 Accessories

Insert M3 or UNC 4-40: Retention against torque 0.7N.m Min.
Female screw lock: Retention against torque 0.5N.m Min


4. Reflow process

Lead free soldering

In accordance with: JSTD_020C 5 (solder pick to 265°)

5. Packaging

In accordance with GS-14-1061 for Hand Placing
In accordance with GS-14-1054 for Gripper
In accordance with GS-14-1052 for Vacuum nozzle (CAP)

NUMBER GS-12-372	TYPE PRODUCT SPECIFICATION		
TITLE SUB DELTA D PIP FCI P/N : D--P/S24A6R---LF & D-P/S24B6R---LF		PAGE 6 of 6	REVISION C
		AUTHORIZED BY H.LEGALLIC	DATE 07/06/08
CLASSIFICATION UNRESTRICTED			

6.Revision record

Rev.	Page	Description	ECN	YY/MM/DD
1	ALL	CREATED	-	06/02/30
2	3&5	UPDATED		06/04/13
A	ALL	Created for PDM	LS06-0087	06/05/30
B	ALL	Add: Ref DxxP/S24B6RxxLF Updated plating for Shell and Accessories	LS07-0011	07/01/15
C	ALL	New frame	LS07-0129	07/06/08