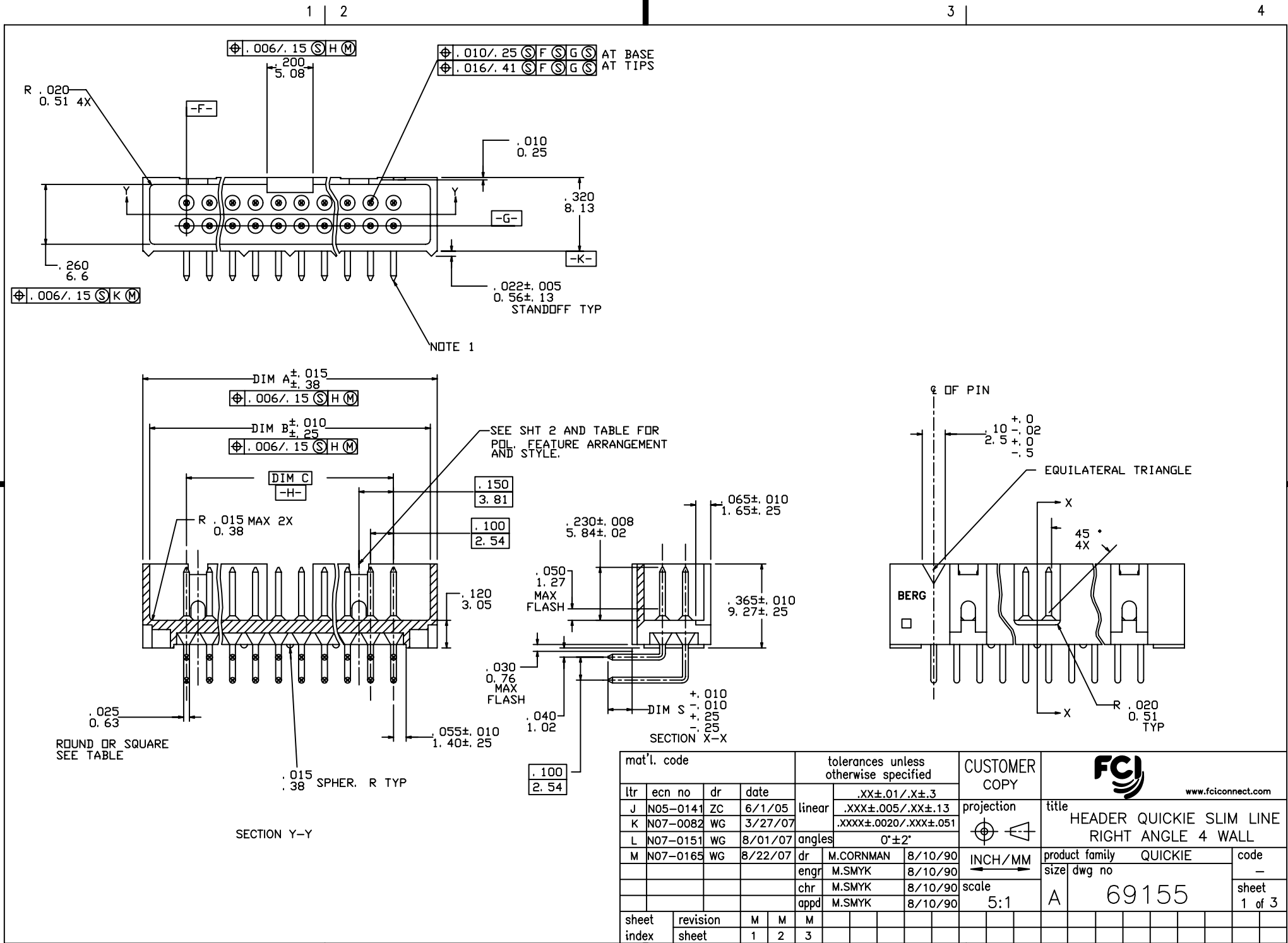


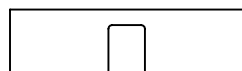
Tous droits strictement reserves. Reproduction ou communication a des tiers interdite sous quelque forme que ce soit sans autorisation ecrite du proprietaire. Propriete de c FCI. Droits de reproduction FCI.



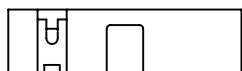
All rights strictly reserved. Reproduction or issue to third parties in any form whatever is not permitted without written authority from the proprietor. Property of FCI. Copyright FCI.



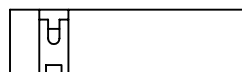
mat'l. code				tolerances unless otherwise specified			CUSTOMER COPY		FCI www.fciconnect.com				
ltr	ecn no	dr	date	linear	.XX±.01/.X±.3		projection	title	HEADER QUICKIE SLIM LINE RIGHT ANGLE 4 WALL				
J	N05-0141	ZC	6/1/05		.XXX±.005/.XX±.13								
K	N07-0082	WG	3/27/07		.XXX±.0020/.XXX±.051								
L	N07-0151	WG	8/01/07	angles	0°±2°		INCH/MM	product family	QUICKIE				
M	N07-0165	WG	8/22/07	dr	M.CORNMAN	8/10/90					scale	size	dwg no
				enrg	M.SMYK	8/10/90							
				chr	M.SMYK	8/10/90	sheet	1 of 3					
				appd	M.SMYK	8/10/90							
sheet index	revision sheet	M	M	M									



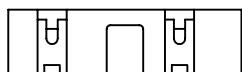
2 X 5
STYLE A



2 X 7
STYLE C



2 X 5
STYLE B



2 X 8 THUR 2 X 30
STYLE D

KEY FOR PLATING AND TAIL LENGTH AND TYPE			
X	TERMINAL PLATING (NOTE 10)	DIM S	TERMINAL TYPE
-0XX(LF)	30u" / .76u Au OVER 50u" / 1.27u Ni	.105/2.67	RD
-1XX(LF)	30u" / .76 GXT GOLD FLASH	.105/2.67	RD
-2XX(LF)	30u" / .76u Au OVER 50u" / 1.27u Ni	.150/3.81	RD
-3XX(LF)	30u" / .76 GXT GOLD FLASH	.150/3.81	RD
-4XX(LF)	30u" / .76u Au OVER 50u" / 1.27u Ni	.105/2.67	SQ
-5XX(LF)	30u" / .76 GXT GOLD FLASH	.105/2.67	SQ
-6XX(LF)	30u" / .76u Au OVER 50u" / 1.27u Ni	.150/3.81	SQ
-7XX(LF)	30u" / .76 GXT GOLD FLASH	.150/3.81	SQ
-8XX(LF)	15u" / .38u Au OVER 50u" / 1.27u Ni	.150/3.81	SQ
-9XX(LF)	15u" / .38u Au OVER 50u" / 1.27u Ni	.105/2.67	SQ

NOTES

- ① SAME PIN POSITION TOLERANCE APPLIES TO BOTH ENDS OF EACH TERMINAL.
- ② MOLDING MAT'L; 30% GLASS-FILLED POLYESTER, FLAME RETARDANT PER UL 94-V0, COLOR; BLUE.
3. 1° MAX DRAFT PERMISSIBLE ON ALL SURFACES.
4. 1.8 KILOGRAMS/4 POUNDS MIN. TERM. PULL-OUT FORCE.
5. TERMINAL MAT'L: PHOSPHOR BRONZE.
- ⑥ A. PART NUMBERS HAVING AN "R" FOLLOWING THE 8 DIGIT P/N (EXAMPLE 69155-010 R) HAVE A RETENTION FEATURE. LOCATION IS MANUFACTURER'S OPTION.
- B. CONNECTORS WITH RETENTION AND ROUND PINS HAVE 15LB/6.8KG MAX INSERTION AND .25LB/.11KG MIN RETENTION FORCE WHEN USED IN A .035/.89±.003/.08 DIA HOLE AND .062/1.58 THICK PCB BOARD
- C. CONNECTORS WITH RETENTION AND SQUARE PINS HAVE A 15LB/6.8KG MAX INSERTION AND A .5LB/.23KG MIN RETENTION WHEN USED IN A .040/1.02±.003/.08 DIA HOLE AND A .062/1.58 THICK PCB BOARD.
- ⑦ DIMENSION "A" FOR -034 HAS A MAXIMUM SIZE OF 1.990/50.6
8. 69155-***LF IS JUST A LEAD FREE PRODUCT.
9. THE HOUSING OF XXXXX-XYLF WILL WITHSTAND EXPOSURE TO 260°C PEAK TEMPERATURE FOR 10 SECONDS IN A WAVE SOLDER PROCESS.
10. PLATING OPTION: MAYBE EITHER GOLD OR GXT PLATING AT MANUFACTURER'S OPTION
11. FOR 69155-150LF, THE TOLERANCE OF DIM "S" IS " -0.10, +0.35 "

Tous droits strictement reserves. Reproduction ou communication a des tiers interdite sous quelque forme que ce soit sans autorisation ecrite du proprietaire. Propriete de c FCI. Droits de reproduction FCI.



All rights strictly reserved. Reproduction or issue to third parties in any form whatever is not permitted without written authority from the proprietor. Property of FCI. Copyright FCI.

mat'l. code				tolerances unless otherwise specified		CUSTOMER COPY	www.fciconnect.com
ltr	ecn no	dr	date	linear	.XX±.01/.X±.3	projection	
M				linear	.XXX±.005/.XX±.13		title
				angles	.XXX±.0020/.XXX±.051		HEADER QUICKIE SLIM LINE RIGHT ANGLE 4 WALL
				dr	M.CORNMAN 8/10/90	INCH/MM	product family
				engr	M.SMYK 8/10/90		QUICKIE
				chr	M.SMYK 8/10/90	scale	code
				appd	M.SMYK 8/10/90		5:1
sheet index	revision sheet					A	size
							dwg no
							69155
							sheet
							2 of

Tous droits strictement reserves. Reproduction ou communication a des tiers interdite sous quelque forme que ce soit sans autorisation ecrite du proprietaire. Propriete de c FCI. Droits de reproduction FCI.



All rights strictly reserved. Reproduction or issue to third parties in any form whatever is not permitted without written authority from the proprietor. Property of FCI. Copyright FCI.

1 | 2

3

4

PRODUCT NO NOTE 6	POS	DIM A	DIM B	DIM C	STYLE
69155-X02(LF)	2X5	. 78/19. 8	. 72/18. 3	. 400/10. 16	B
-X10(LF)	2X5	. 78/19. 8	. 72/18. 3	. 400/10. 16	A
-X14(LF)	2X7	. 98/24. 9	. 92/23. 4	. 600/15. 24	C
-X16(LF)	2X8	1. 08/27. 9	1. 02/25. 9	. 700/17. 78	D
-X20(LF)	2X10	1. 28/32. 5	1. 22/31. 0	. 900/22. 86	↑
-X24(LF)	2X12	1. 48/37. 6	1. 42/36. 1	1. 100/27. 94	
-X26(LF)	2X13	1. 58/40. 1	1. 52/38. 6	1. 200/30. 48	
-X30(LF)	2X15	1. 78/45. 2	1. 72/43. 7	1. 400/35. 56	
-X34(LF)	2X17	1. 98/50. 3	1. 92/48. 8	1. 600/40. 64	
-X40(LF)	2X20	2. 28/57. 9	2. 22/56. 4	1. 900/48. 26	
-X44(LF)	2X22	2. 48/63. 0	2. 42/61. 5	2. 100/53. 34	
-X50(LF)	2X25	2. 78/70. 6	2. 72/69. 1	2. 400/60. 96	↓
69155-X60(LF)	2X30	3. 28/83. 3	3. 22/81. 8	2. 900/73. 66	D

NOTE 7

NOTE 11

mat'l. code				tolerances unless otherwise specified		CUSTOMER COPY	www.fciconnect.com			
ltr	ecn no	dr	date	linear	.XX±.01 / .X±.3	projection	title			
M					.XXX±.005 / .XX±.13			HEADER QUICKIE SLIM LINE		
				angles	.XXX±.0020 / .XXX±.051			RIGHT ANGLE 4 WALL		
					0'±2"		INCH/MM	product family QUICKIE		
				dr	M.CORNMAN 8/10/90	scale		size		
				enr	M.SMYK 8/10/90		5:1	dwg no		
				chr	M.SMYK 8/10/90			A	69155	
				appd	M.SMYK 8/10/90				code -	
sheet index	revision sheet							sheet 3 of		

PDM: Rev:M

STATUS Released

Printed: Apr 12, 2011

1

2

3

4