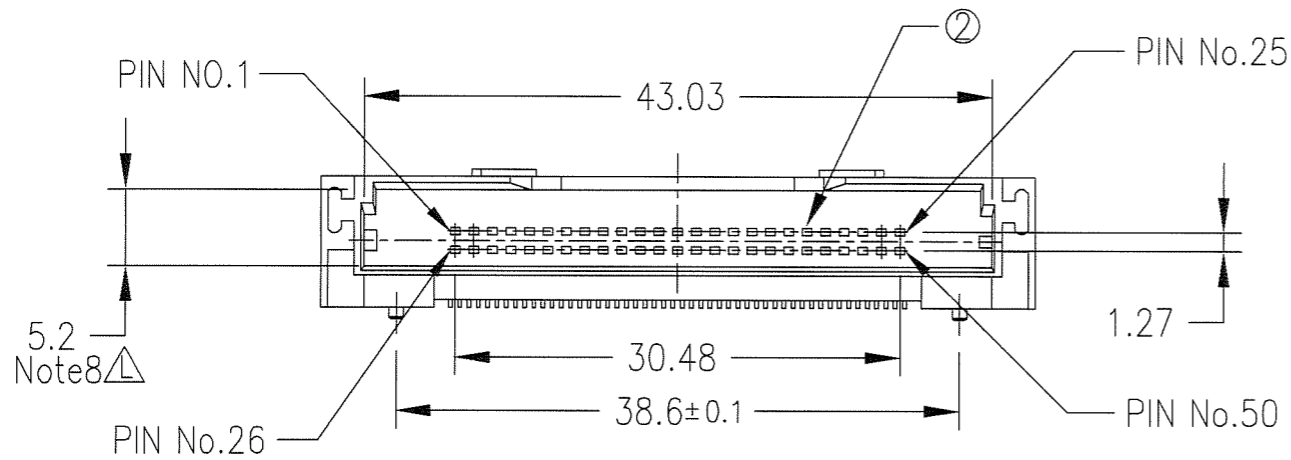
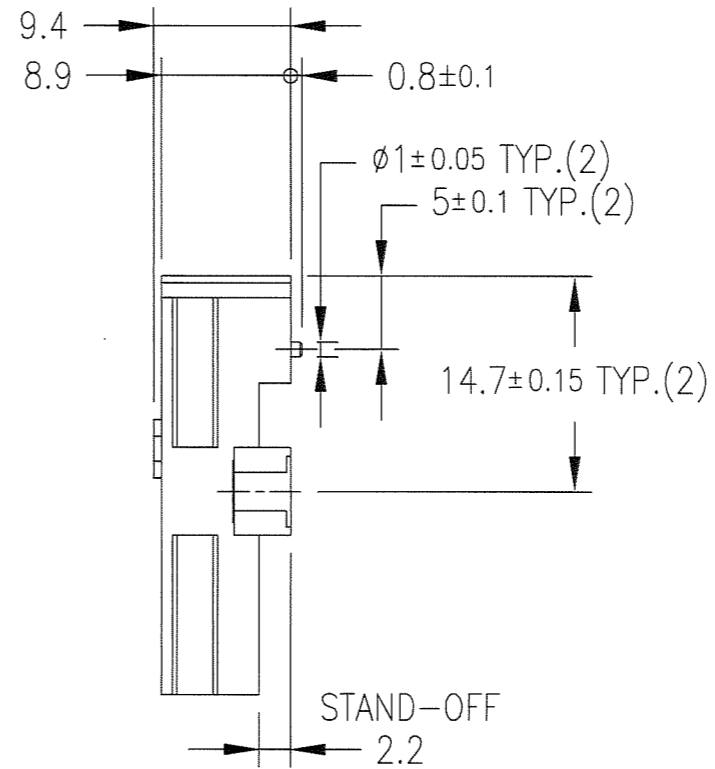
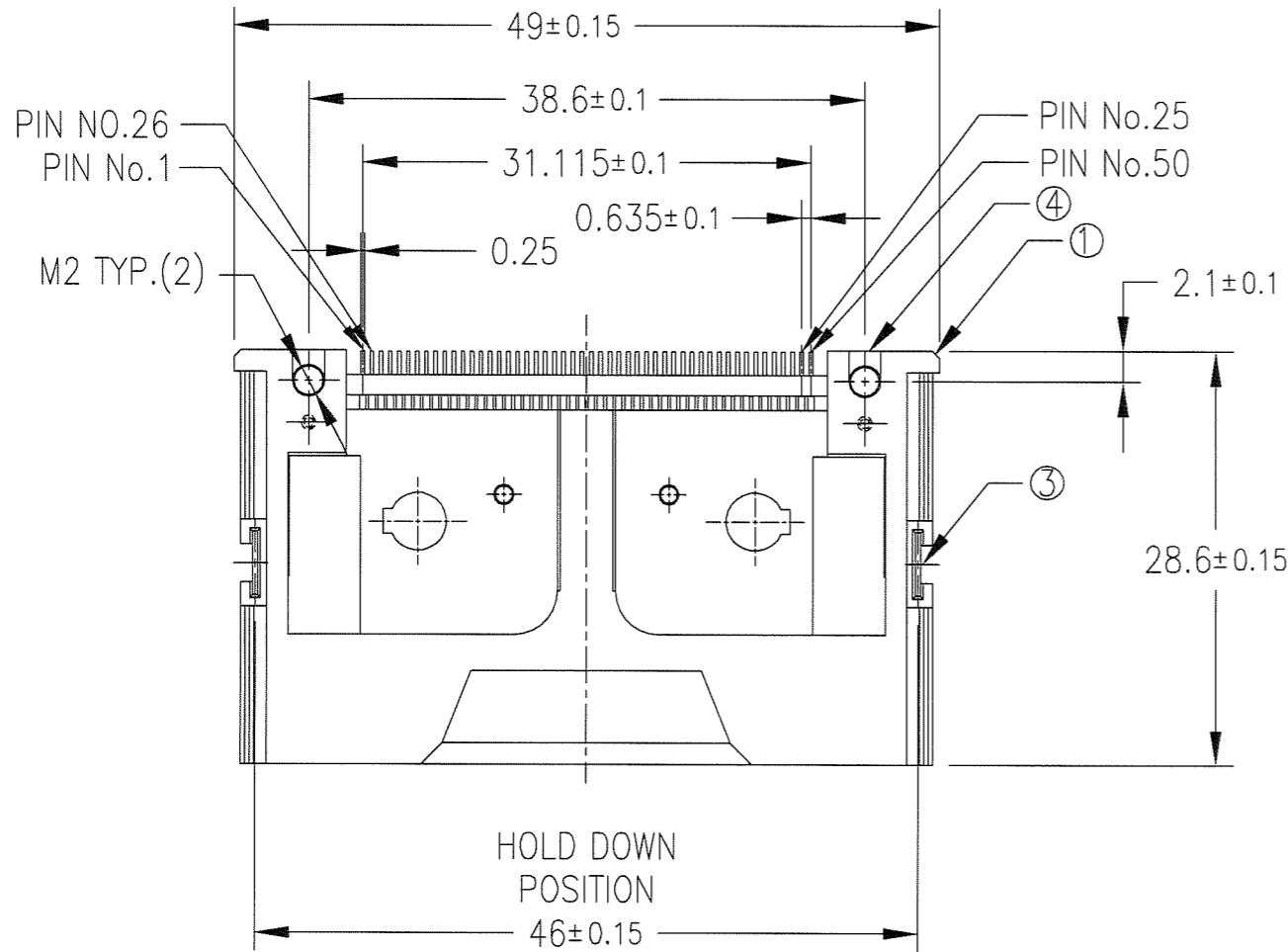


PRODUCT NO.	REMARKS
62453-022LF	WITH METAL PLATE(M2 SCREWS)

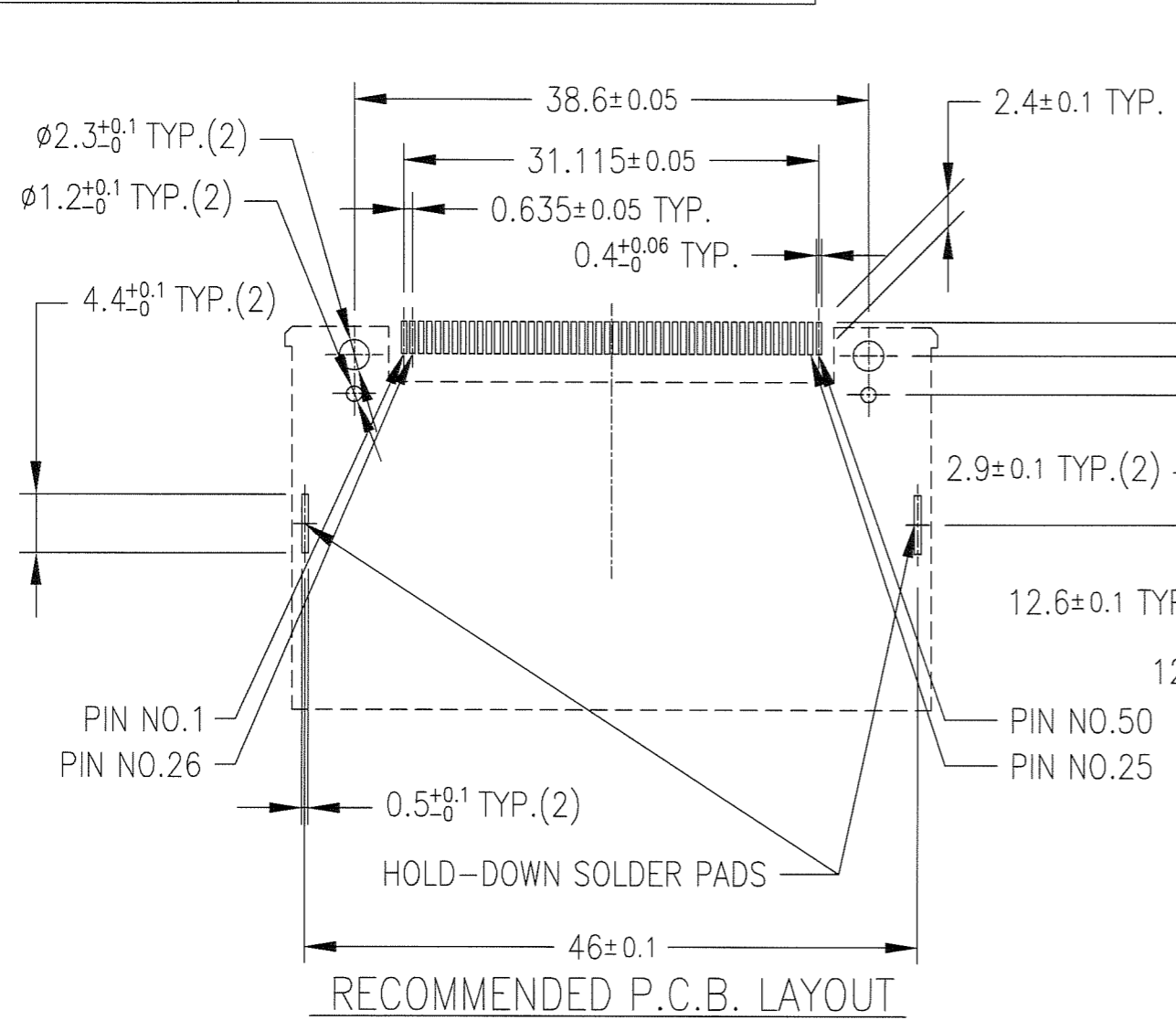


COMPONENT	MATERIAL	FINISH	QTY.
① HOUSING	FLAME RETARDANT RESIN	NONE (BLACK)	1
② PIN	PHOSPHOR BRONZE	UNDER : 1.0μm MIN. Ni CONTACT AREA : 0.2μm MIN. Au SOLDER TAIL : 0.05μm MIN. Au	50
③ HOLD DOWN	PHOSPHOR BRONZE	UNDER : 1.27μm MIN. Ni SOLDER TAIL : 2.0μm MIN. Sn	2
④ METAL PLATE	BRASS	2μm MIN. Ni	2

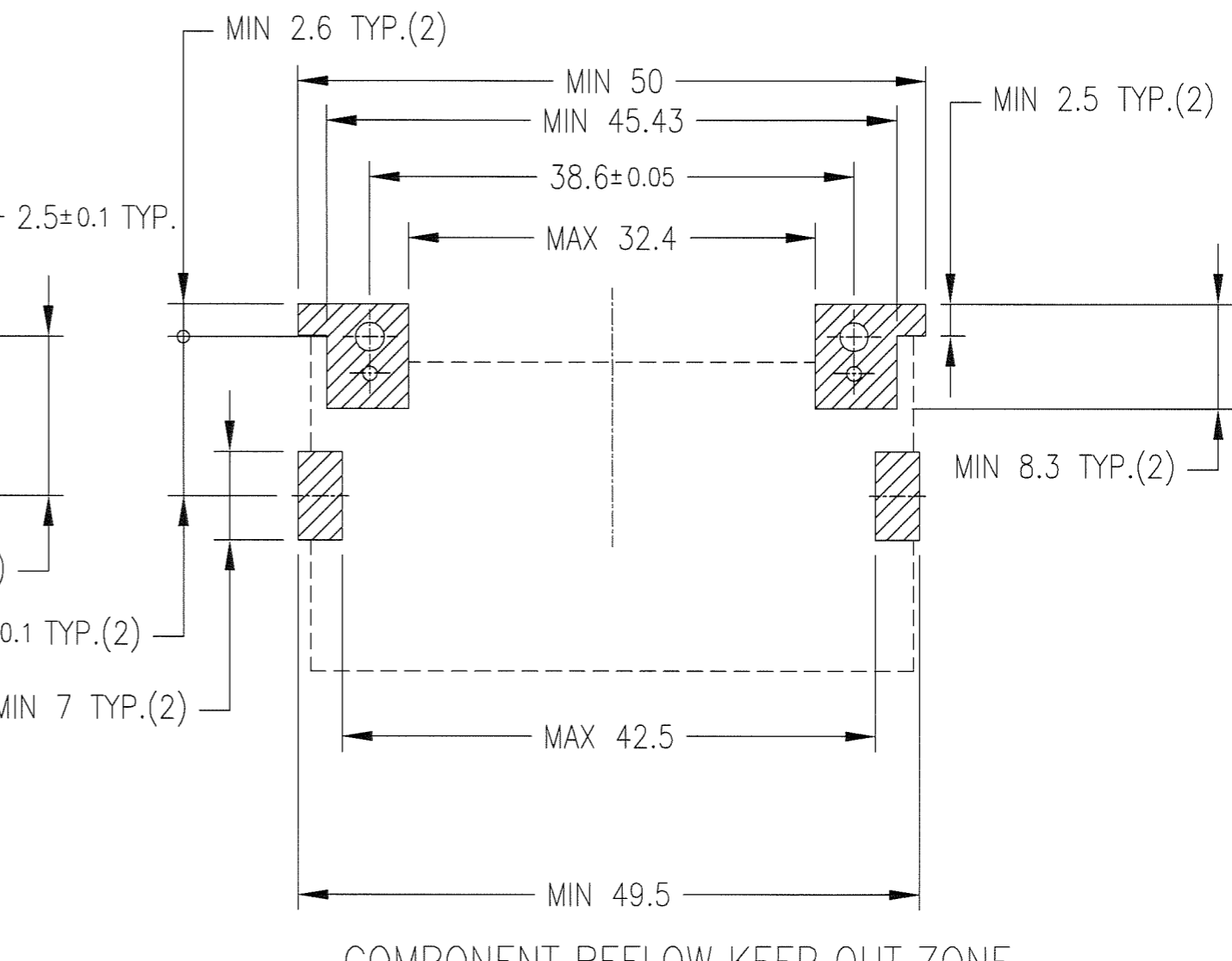
mat'l. code				surface		tolerance		projection		product family		CODE	
---				ISO 1302		ISO 406		mm		5AZF - CF HEADER		JP	
										title			
										COMPACT FLASH HDR			
										TOP MOUNT			
										dwg no		sheet 1 of 8 size	
										62453		A3	
										type		Product Customer Drawing	
												Rev.	
												L	

ltr	description	ecn no	dr	date	tolerances unless otherwise specified	angles	linear	0.X	±0.3	0.XX	±0.3	0.XXX	±0.3	scale 2:1
F	ADDED SHEET 5,6	J04-0061	HS	2/18/04										
G	ADDED SHEET 7,8	J05-0357	M.H	6/16/05										
H	REVISED	J05-0748	R.S	10/31/05		0'±2'								
J	REVISED	J06-0315	R.S	8/1/06	dr		S.WATANABE	7/28/08						
K	REVISED	J06-0399	R.S	10/20/06	enr		S.WATANABE	7/28/08						
L	REVISED	J08-0316	S.W	7/28/08	chr									

PRODUCT NO.	REMARKS
62453-022LF	WITH METAL PLATE(M2 SCREWS)



RECOMMENDED P.C.B. LAYOUT



COMPONENT REFLOW KEEP OUT ZONE

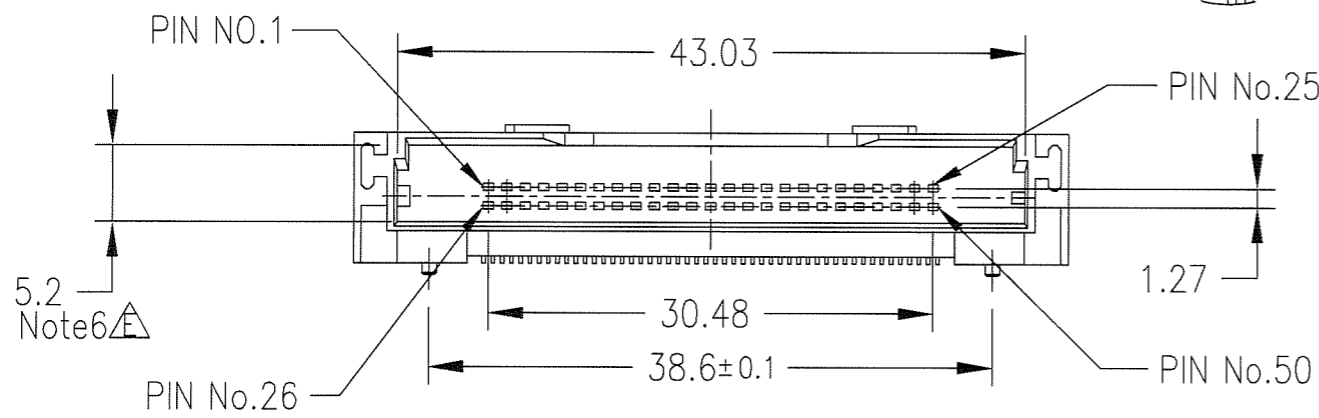
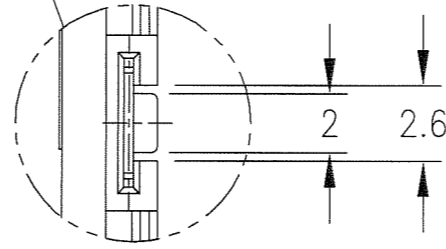
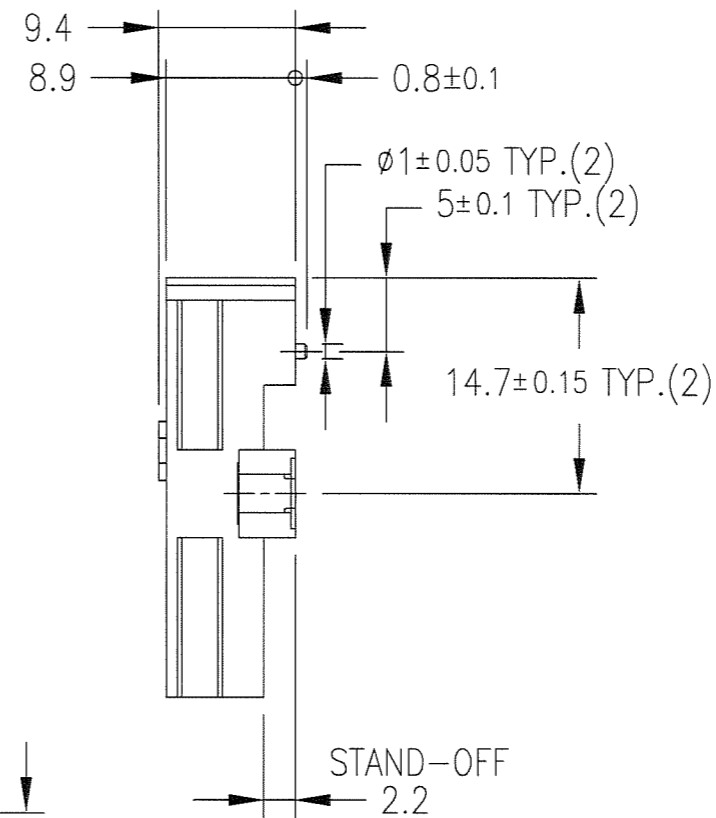
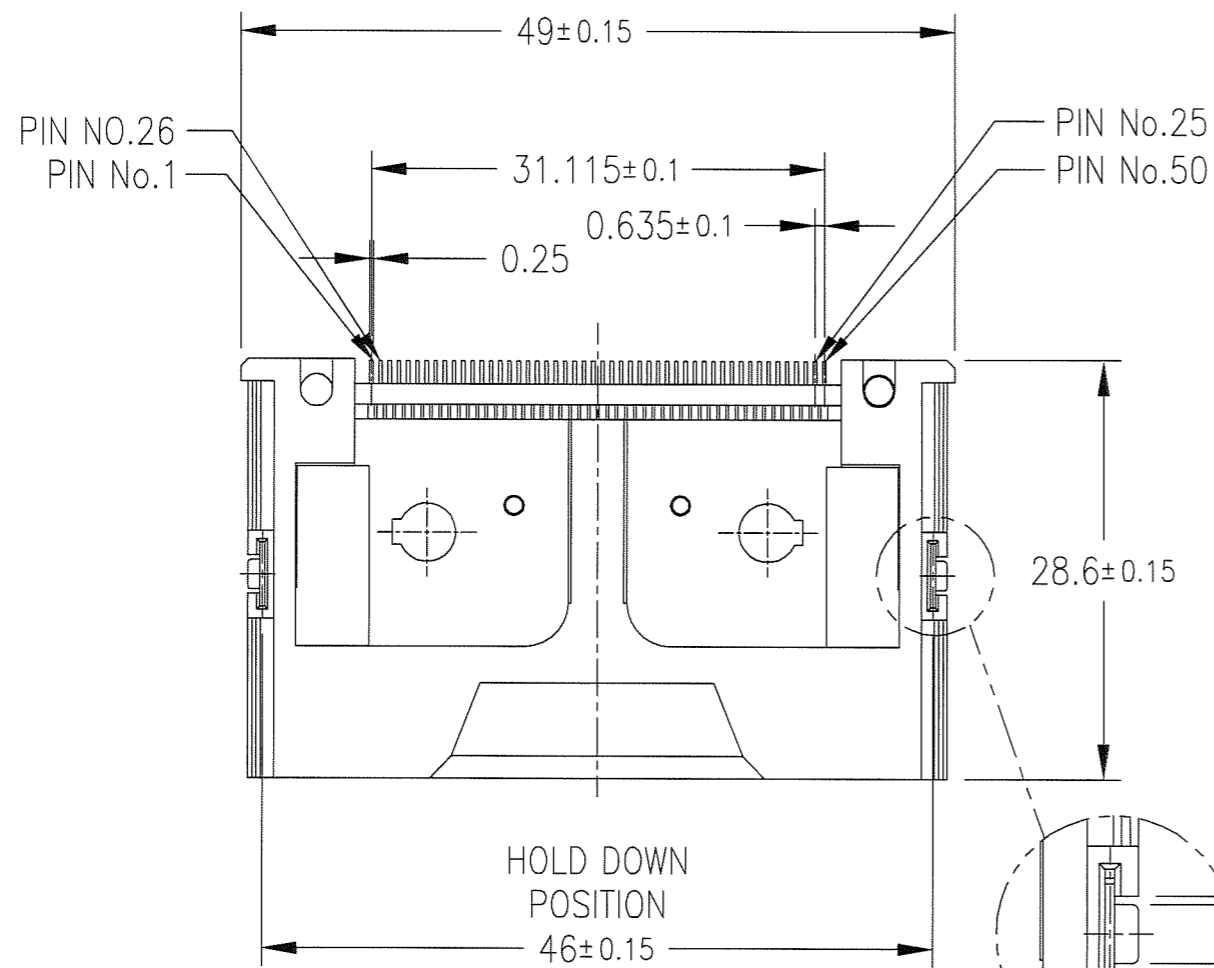
- NOTE
- 1.PRODUCT SPECIFICATION : 110-404
 - 2.PACKAGING SPECIFICATION : GES-14-620
 - 3.RECOMMENDED TIGHTENING TORQUE : 0.127N.m [1.3kgf.cm]
 - 4.SOLDER TAIL CO-PLANARITY : MAX 0.1
 - 5.RECOMMENDED HOLD-DOWN SCREW
M 2mm X 6mm SCREWS
FOR 0.062in/1.57mm THICK PCB
 - 6,FOR LEAD FREE P/N, THE PRODUCT MEETS EUROPEAN UNION DIRECTIVES AND OTHER COUNTRY REGULATIONS AS DESCRIBED IN GS-22-008.
 - 7.THE HOUSING WILL WITHSTAND EXPOSURE TO 260°C PEAK TEMPERATURE FOR 10 SECONDS IN A CONVENTION, INTRA-RED OR VAPOR PHASE REFLOW OVEN.
 - 8.MEASURED AT THE BOTTOM.

mat'l. code				surface		tolerance		projection		product family		CODE
---				ISO 1302		ISO 406 ISO 1101				5AZF - CF HEADER		JP
ltr	description	ecn no	dr	date	tolerances unless otherwise specified					title		
D	REVISED	V20696	HS	5/15/02	angles	linear	0.X	±0.3	mm		COMPACT FLASH HDR	
E	ADDED SHEET 3,4	V20659	HS	12/25/02	0'±2'		0.XX	±0.3			TOP MOUNT	
F	REVISED	J05-0748	R.S	10/31/05			0.XXX	±0.3	scale 2:1			
G	REVISED	J06-0315	R.S	8/1/06	dr	S.WATANABE	7/28/08			dwg no		sheet 2 of 8
H	REVISED	J06-0399	R.S	10/20/06	enrg	S.WATANABE	7/28/08			62453		A3
J	REVISED	J08-0316	S.W	7/28/08	chr	J. Muddan	2008-7-29			type		Product Customer Drawing
sheet index		revision sheet										Rev.
												J



Copyright FCI

PRODUCT NO.	REMARKS
62453-122LF	WITHOUT METAL PLATE(M2 SCREWS)



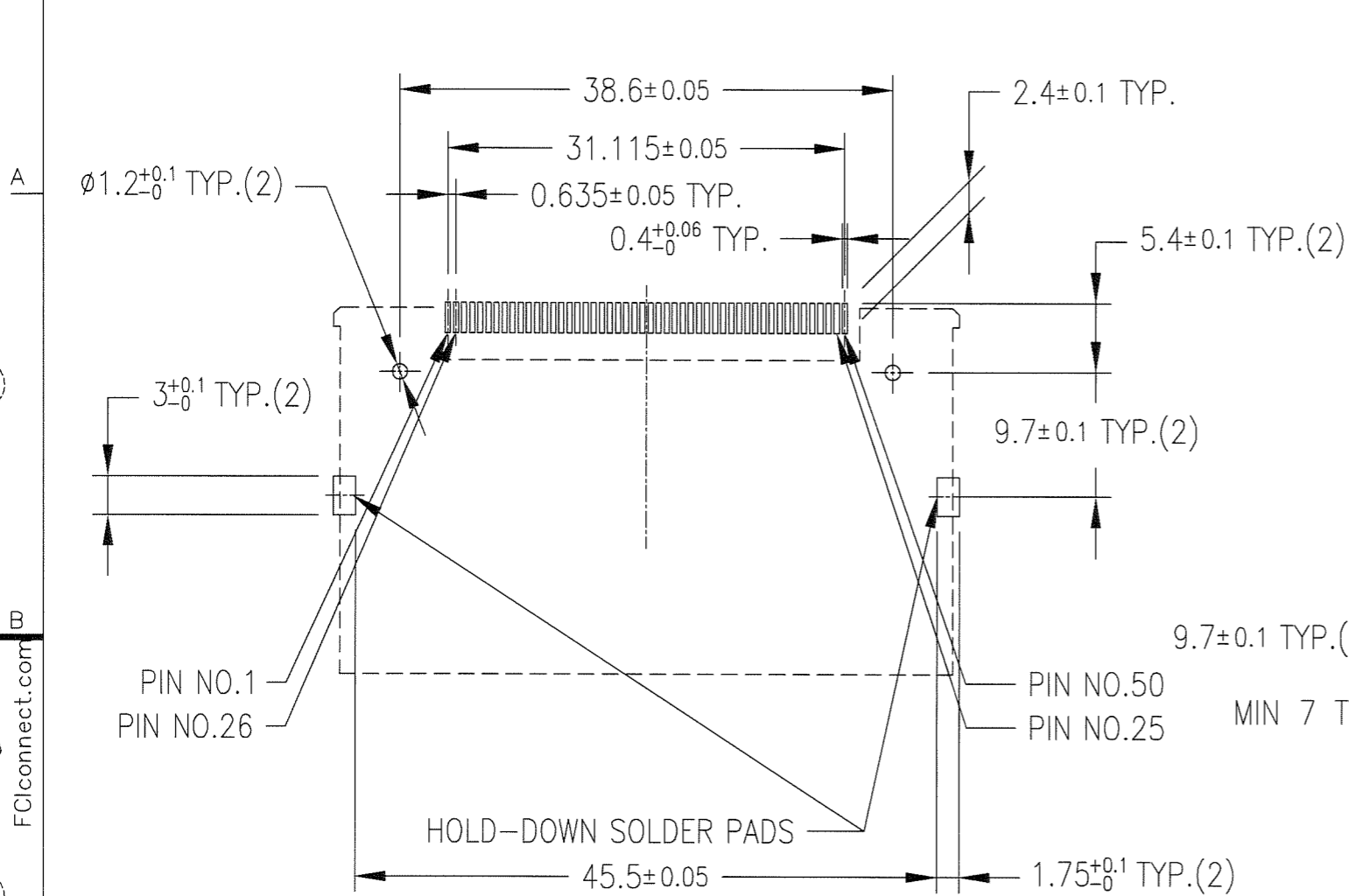
COMPONENT	MATERIAL	FINISH	QTY.
① HOUSING	FLAME RETARDANT RESIN	NONE (BLACK)	1
② PIN	PHOSPHOR BRONZE	UNDER : 1.0μm MIN. Ni CONTACT AREA : 0.2μm MIN. Au SOLDER TAIL : 0.05μm MIN. Au	50
③ HOLD DOWN	PHOSPHOR BRONZE	UNDER : 1.27μm MIN. Ni SOLDER TAIL : 2.0μm MIN. Sn	2

mat'l. code				surface ISO 1302		tolerance ISO 406 ISO 1101		projection		product family		CODE
---				✓		0.X ±0.3		mm		5AZF - CF HEADER		JP
tolerances unless otherwise specified				angles		linear		scale 2:1		title		
A RELEASED J20659 HS 2/18/'04				0°±2'		0.XX ±0.3		FCJ		COMPACT FLASH HDR		
B REVISED J05-0748 R.S 10/31/'05						0.XXX ±0.3				TOP MOUNT		
C REVISED J06-0315 R.S 8/1/'06										dwg no		sheet 3 of 8
D REVISED J06-0399 R.S 10/20/'06										62453		A3
E REVISED J08-0316 S.W 7/28/'08										type		Product Customer Drawing
sheet index				revision sheet								Rev. E

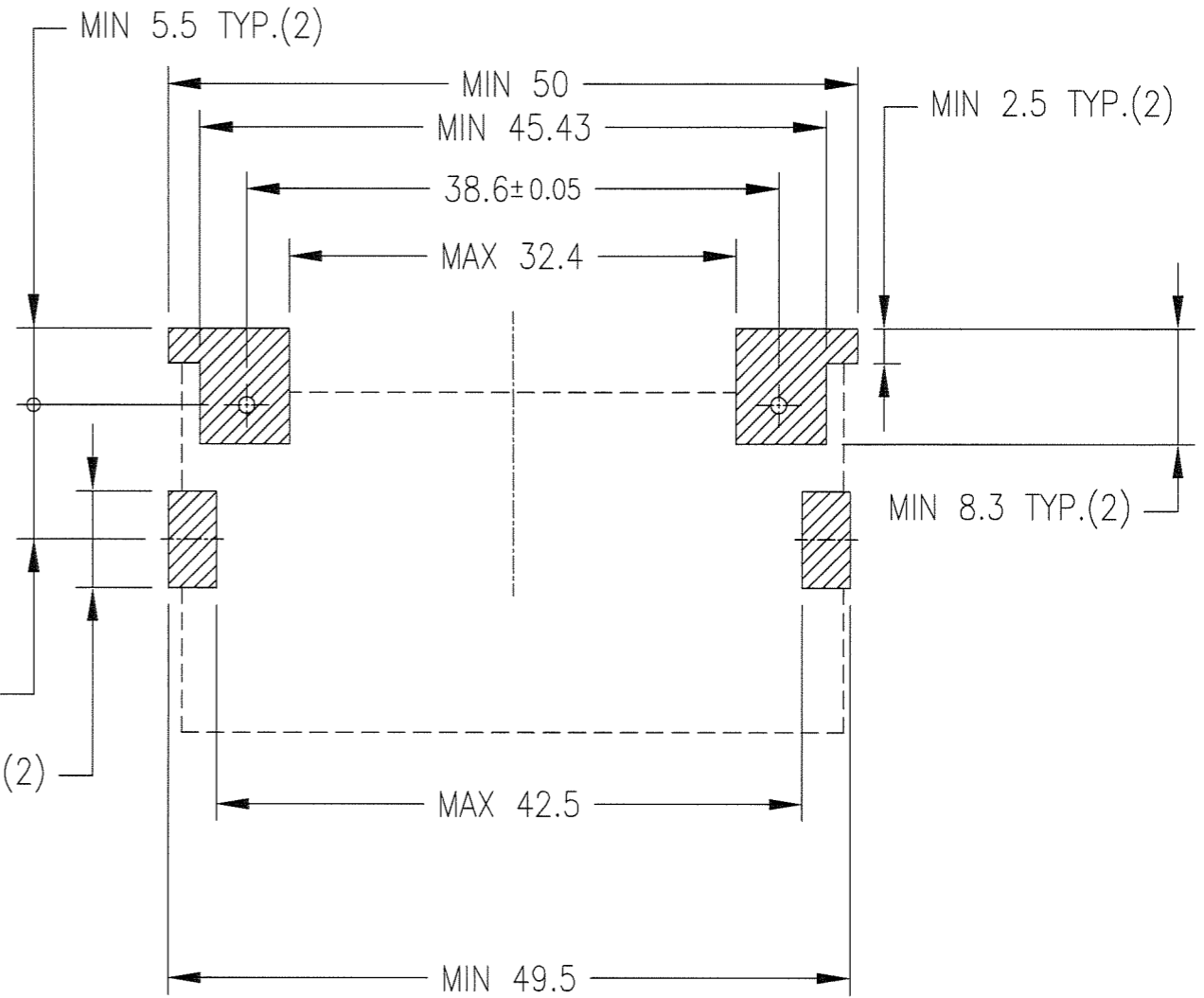


Copyright FCI

PRODUCT NO.	REMARKS
62453-122LF	WITHOUT METAL PLATE(M2 SCREWS)



RECOMMENDED P.C.B. LAYOUT



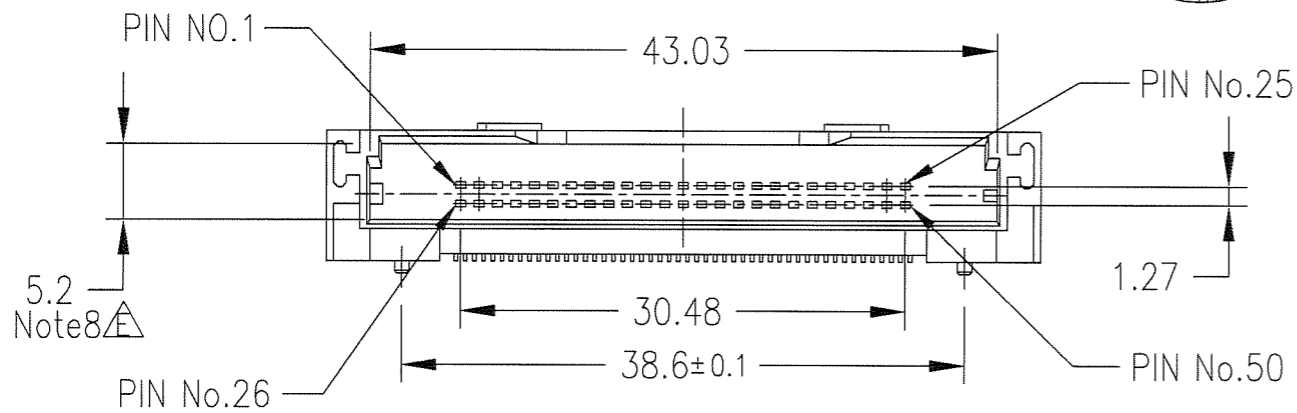
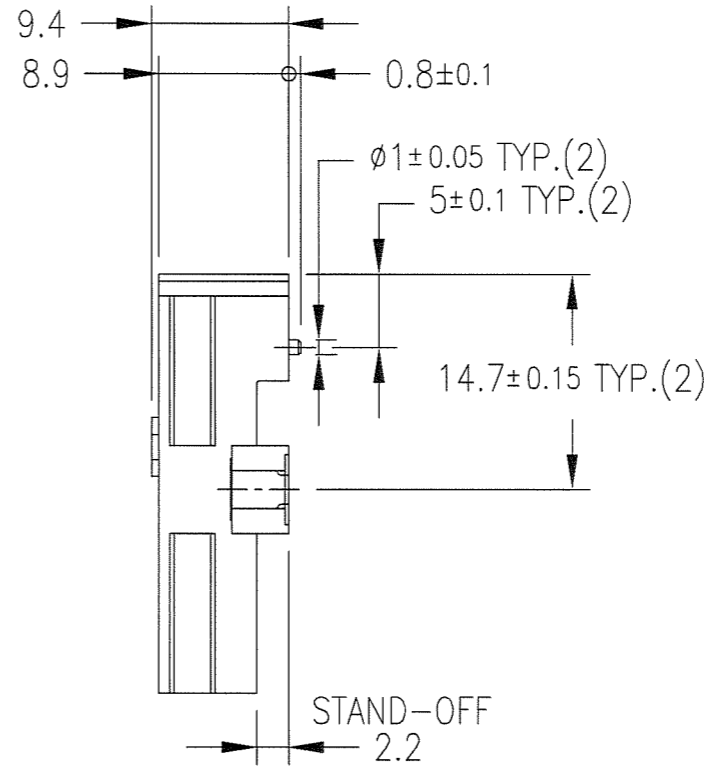
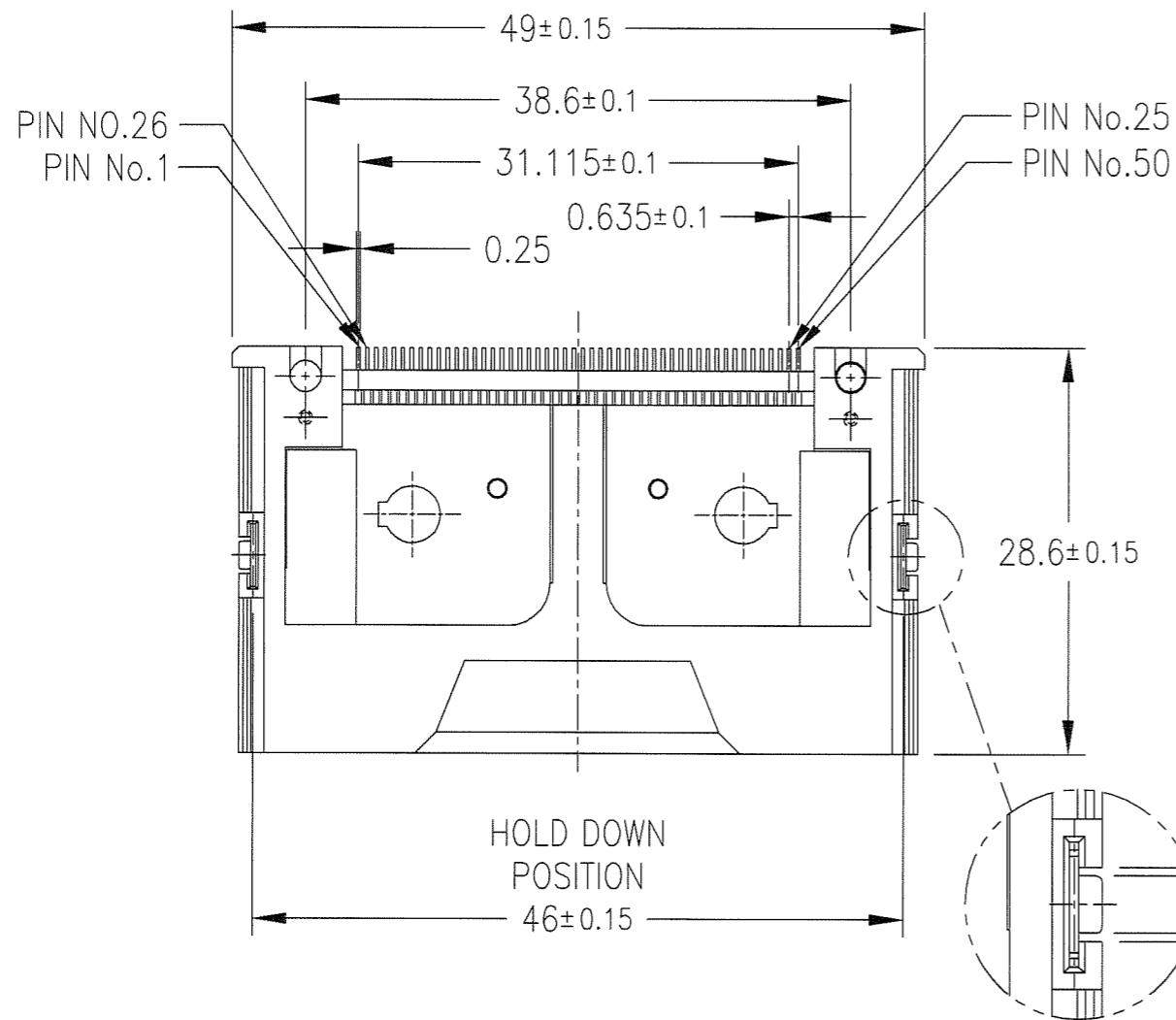
COMPONENT REFLOW KEEP OUT ZONE

NOTE

- 1.PRODUCT SPECIFICATION : 110-404
- 2.PACKAGING SPECIFICATION : GES-14-620
- 3.SOLDER TAIL CO-PLANARITY : MAX 0.1
- 4, FOR LEAD FREE P/N, THE PRODUCT MEETS EUROPEAN UNION DIRECTIVES AND OTHER COUNTRY REGULATIONS AS DESCRIBED IN GS-22-008.
5. THE HOUSING WILL WITHSTAND EXPOSURE TO 260°C PEAK TEMPERATURE FOR 10 SECONDS IN A CONVENTION, INTRA-RED OR VAPOR PHASE REFLOW OVEN.
6. MEASURED AT THE BOTTOM.

mat'l. code				surface		tolerance		projection		product family		CODE
---				ISO 1302 <input checked="" type="checkbox"/>		ISO 406				5AZF - CF HEADER		JP
						ISO 1101		mm		title		
						tolerances unless otherwise specified		scale 2:1		COMPACT FLASH HDR		
ltr	description	ecn no	dr	date	angles	linear	0.X	±0.3	TOP MOUNT			
1	RELEASED		HS	9/12/02			0.XX	±0.3				
A	RELEASED	J20659	HS	12/25/02			0.XXX	±0.3				
B	REVISED	J05-0748	R.S	10/31/05	0°±2'							
C	REVISED	J06-0315	R.S	8/1/'06	dr	S.WATANABE	7/28/'08		dwg no sheet 4 of 8 size			
D	REVISED	J06-0399	R.S	10/20/'06	enr	S.WATANABE	7/28/'08		62453 A3			
E	REVISED	J08-0316	S.W	7/28/'08	chr	<i>S. Watanabe</i>	2008-7-29		type Product Customer Drawing			
sheet index		revision sheet								Rev. E		

PRODUCT NO.	REMARKS
62453-222LF	WITH METAL PLATE(M2 SCREWS)



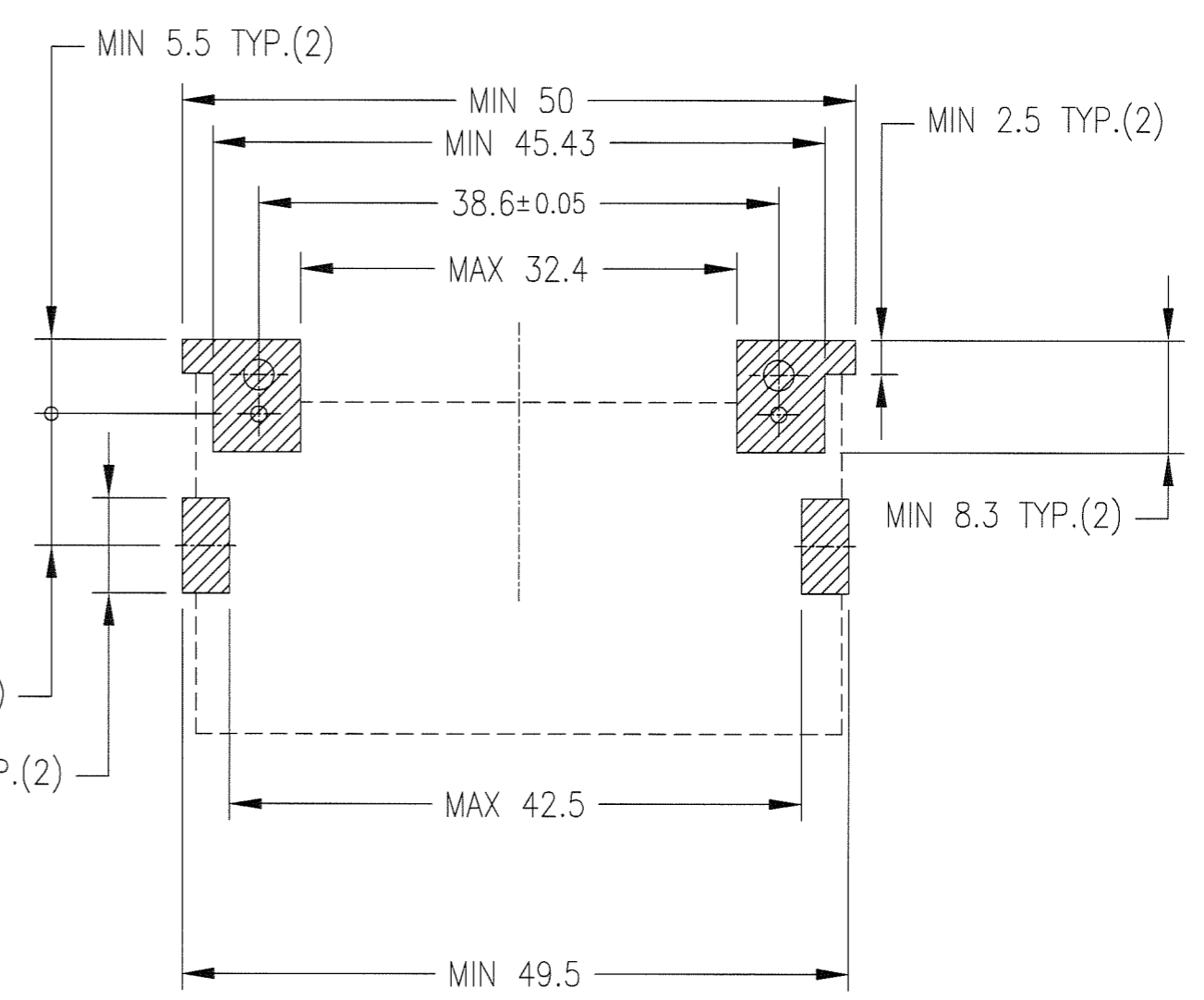
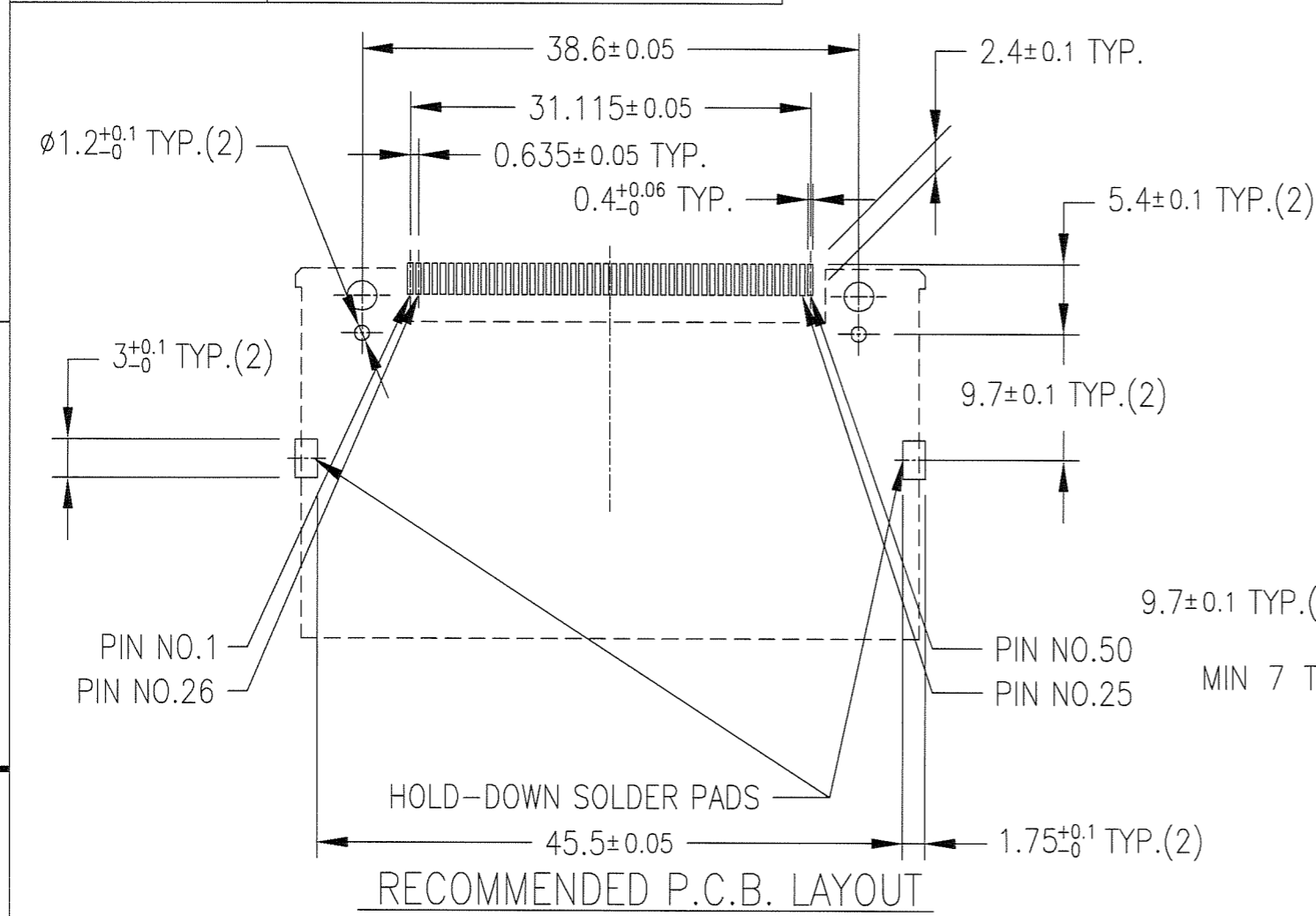
COMPONENT	MATERIAL	FINISH	QTY.
① HOUSING	FLAME RETARDANT RESIN	NONE (BLACK)	1
② PIN	PHOSPHOR BRONZE	UNDER : 1.0μm MIN. Ni CONTACT AREA : 0.2μm MIN. Au SOLDER TAIL : 0.05μm MIN. Au	50
③ HOLD DOWN	PHOSPHOR BRONZE	UNDER : 1.27μm MIN. Ni SOLDER TAIL : 2.0μm MIN. Sn	2
④ METAL PLATE	BRASS	2μm MIN. Ni	2

mat'l. code		surface		tolerance		projection		product family		CODE	
---		ISO 1302 <input checked="" type="checkbox"/>		ISO 406				5AZF - CF HEADER		JP	
				ISO 1101		mm		title			
				tolerances unless otherwise specified		scale 2:1		COMPACT FLASH HDR			
				angles				TOP MOUNT			
				linear				dwg no		sheet 5 of 8 size	
				0'±2'				62453		A3	
				0.X ±0.3				type		Product Customer Drawing	
				0.XX ±0.3				Rev.			
				0.XXX ±0.3				E			
				dr S.WATANABE 7/28/'08							
				enr S.WATANABE 7/28/'08							
				chr <i>[Signature]</i> 2008-7-29							
				appd <i>[Signature]</i> 2008-7-29							
sheet		revision									
index		sheet									



Copyright FCI

PRODUCT NO.	REMARKS
62453-222LF	WITH METAL PLATE(M2 SCREWS)



RECOMMENDED P.C.B. LAYOUT

COMPONENT REFLOW KEEP OUT ZONE

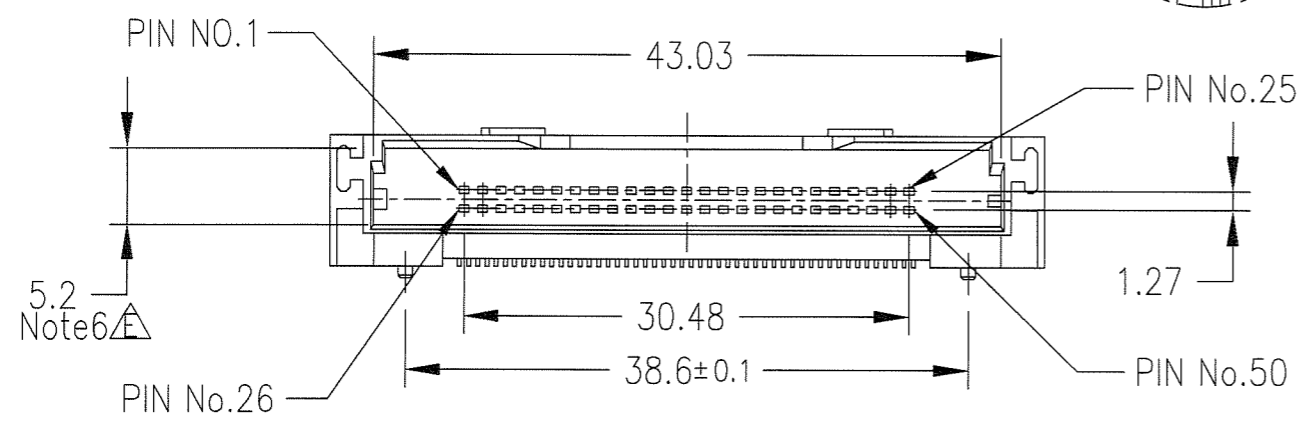
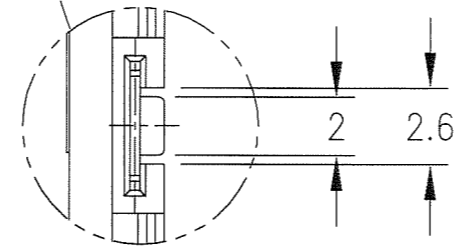
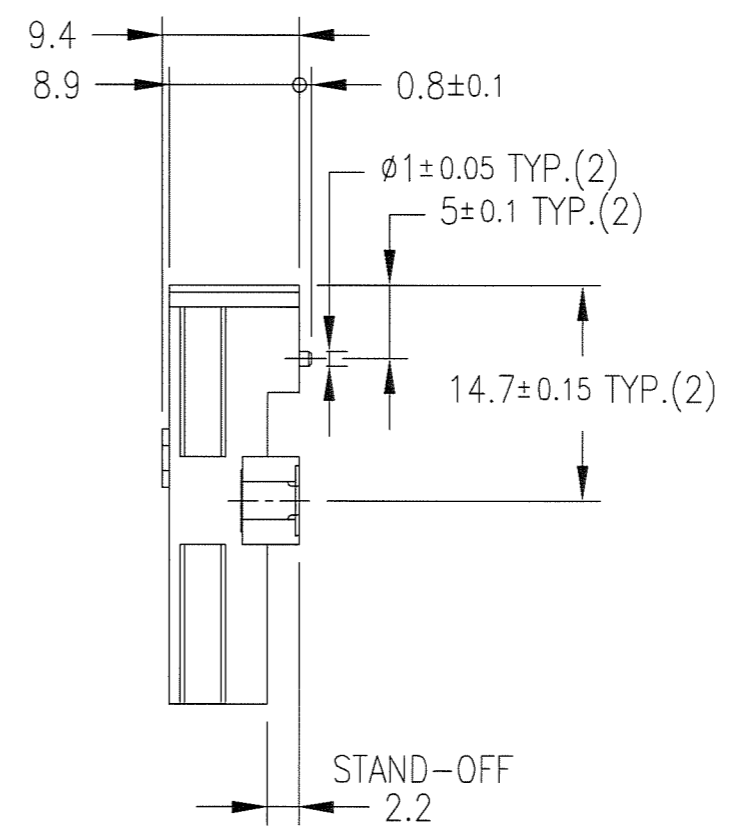
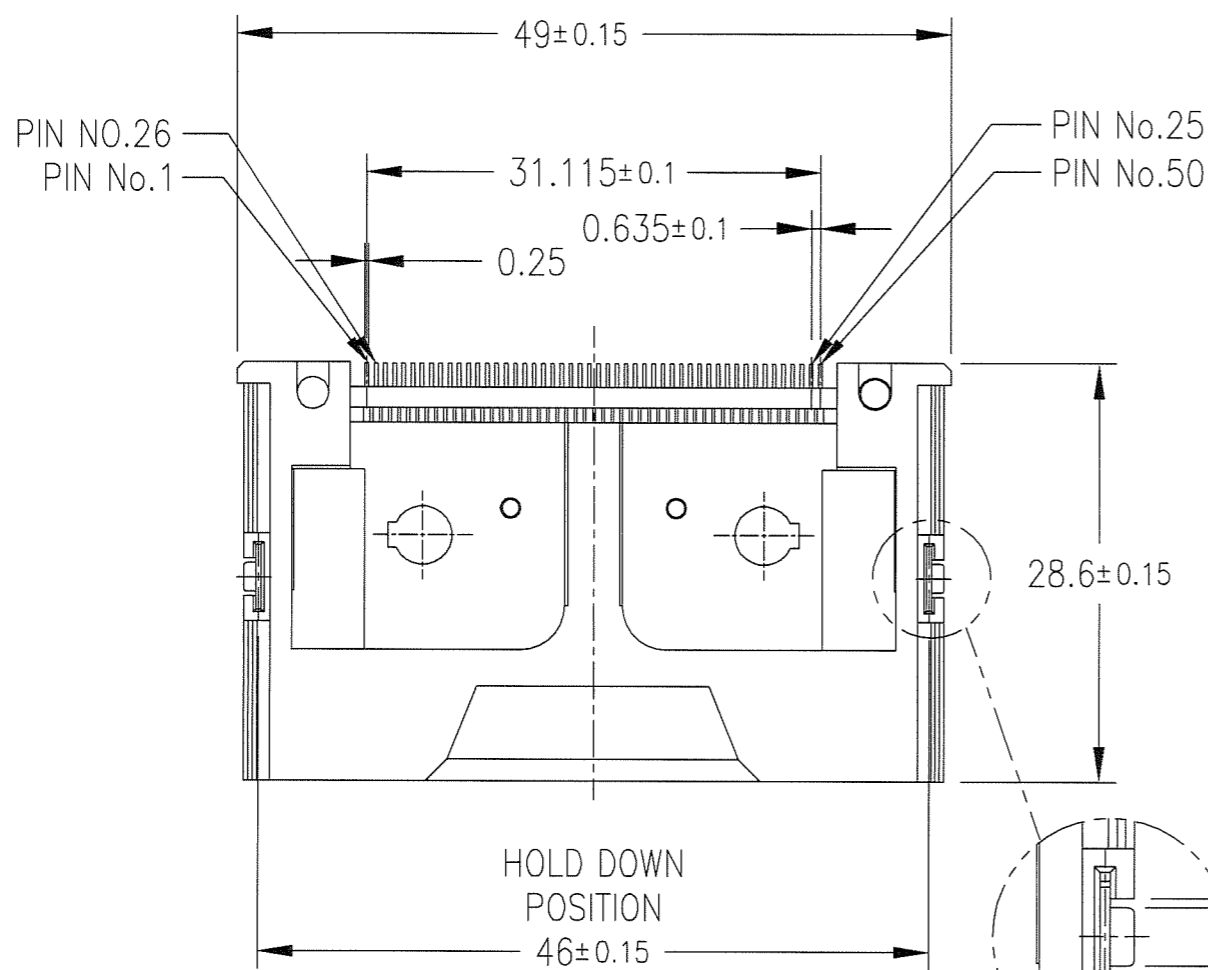
NOTE

- 1.PRODUCT SPECIFICATION : 110-404
- 2.PACKAGING SPECIFICATION : GES-14-620
- 3.RECOMMENDED TIGHTENING TORQUE : 0.127N.m [1.3kgf.cm]
- 4.SOLDER TAIL CO-PLANARITY : MAX 0.1
- 5.RECOMMENDED HOLD-DOWN SCREW
M 2mm X 6mm SCREWS(FCI P/N ; 95121-001)
FOR 0.062in/1.57mm THICK PCB
- 6,FOR LEAD FREE P/N, THE PRODUCT MEETS EUROPEAN UNION DIRECTIVES AND OTHER COUNTRY REGULATIONS AS DESCRIBED IN GS-22-008.
- 7.THE HOUSING WILL WITHSTAND EXPOSURE TO 260°C PEAK TEMPERATURE FOR 10 SECONDS IN A CONVENTION, INTRA-RED OR VAPOR PHASE REFLOW OVEN.
- 8.MEASURED AT THE BOTTOM.

mat'l. code				surface		tolerance		projection		product family		CODE
---				ISO 1302		ISO 406		mm		5AZF - CF HEADER		JP
						ISO 1101				title		
ltr	description	ecn no	dr	date	tolerances unless otherwise specified		scale 2:1		COMPACT FLASH HDR			
1	RELEASED		HS	9/12/02	angles	0.X	±0.3	TOP MOUNT				
A	RELEASED	J20659	HS	12/25/02	linear	0.XX	±0.3					
B	REVISED	J05-0748	R.S	10/31/05	0'±2'	0.XXX	±0.3					
C	REVISED	J06-0315	R.S	8/1/'06	dr	S.WATANABE	7/28/'08			dwg no	sheet 6 of 8 size	
D	REVISED	J06-0399	R.S	10/20/'06	enr	S.WATANABE	7/28/'08			62453	A3	
E	REVISED	J08-0316	S.W	7/28/'08	chr					type	Product Customer Drawing	
sheet index		revision sheet								Rev. E		



PRODUCT NO.	REMARKS
62453-622LF	WITHOUT METAL PLATE(M2 SCREWS)




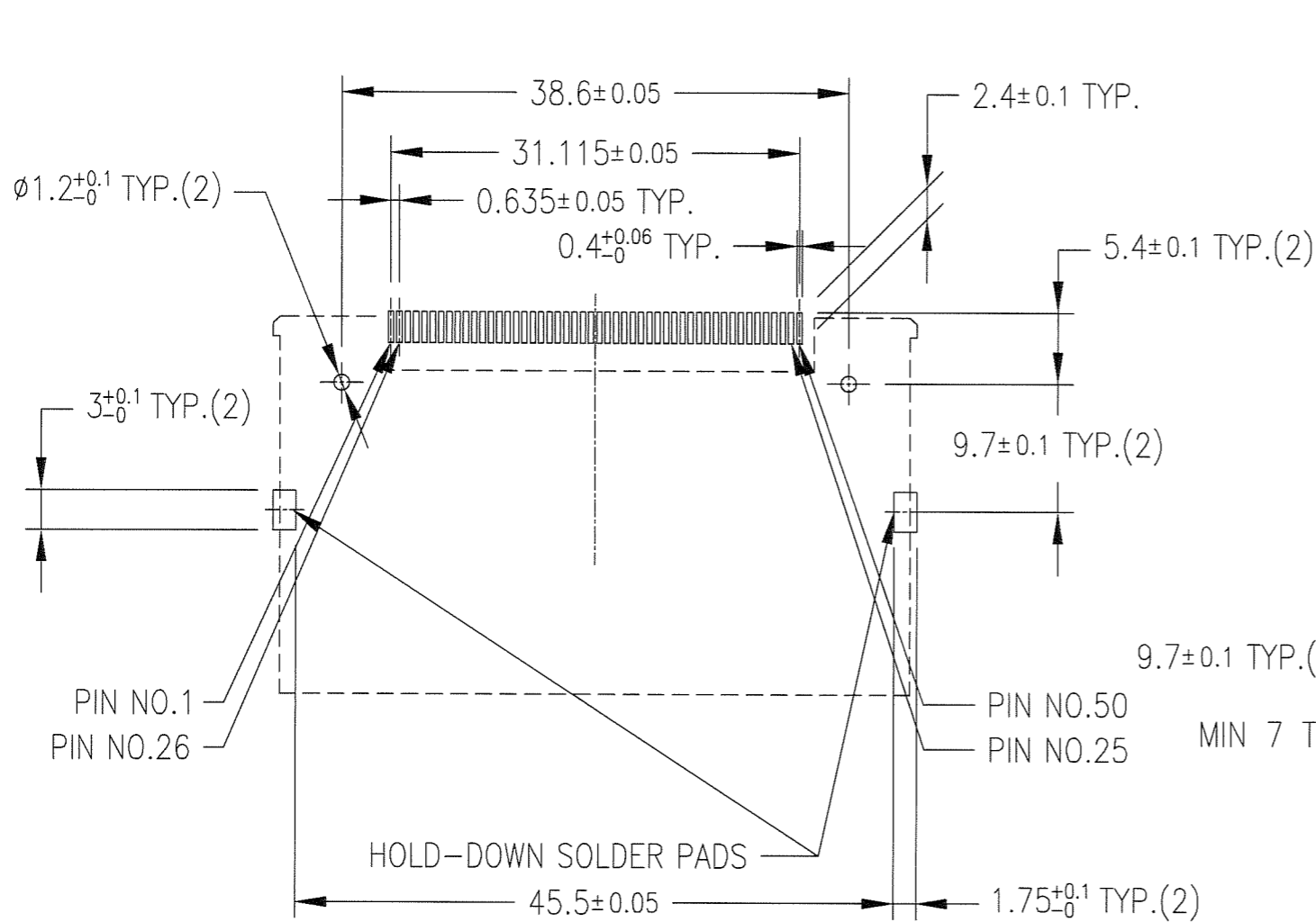
COMPONENT	MATERIAL	FINISH	QTY.
① HOUSING	FLAME RETARDANT RESIN	NONE (BLACK)	1
② PIN	PHOSPHOR BRONZE	UNDER : 1.0μm MIN. Ni CONTACT AREA : 0.76μm MIN. Au SOLDER TAIL : 0.05μm MIN. Au	50
③ HOLD DOWN	PHOSPHOR BRONZE	UNDER : 1.27μm MIN. Ni SOLDER TAIL : 2.0μm MIN. Sn	2

mat'l. code				surface ISO 1302 <input checked="" type="checkbox"/>		tolerance ISO 406 ISO 1101		projection		product family 5AZF - CF HEADER		CODE JP
---				tolerances unless otherwise specified		0.X ±0.3		mm		title COMPACT FLASH HDR TOP MOUNT		
ltr	description	ecn no	dr	date	angles	linear	0.XX ±0.3	scale 2:1		sheet 7 of 8 size		
A	RELEASED	J05-0357	M.H	6/16/05			0.XXX ±0.3			62453 A3		
B	REVISED	J05-0748	R.S	10/31/05						type Product Customer Drawing		
C	REVISED	J06-0315	R.S	8/1/06	0'±2'					Rev. E		
D	REVISED	J06-0399	R.S	10/20/06	dr	S.WATANABE	7/28/08					
E	REVISED	J08-0316	S.W	7/28/08	enr	S.WATANABE	7/28/08					
					chr	<i>S. Watanabe</i>	2008-7-29					
					appd	<i>S. Watanabe</i>	2008-7-29					
sheet index	revision sheet											

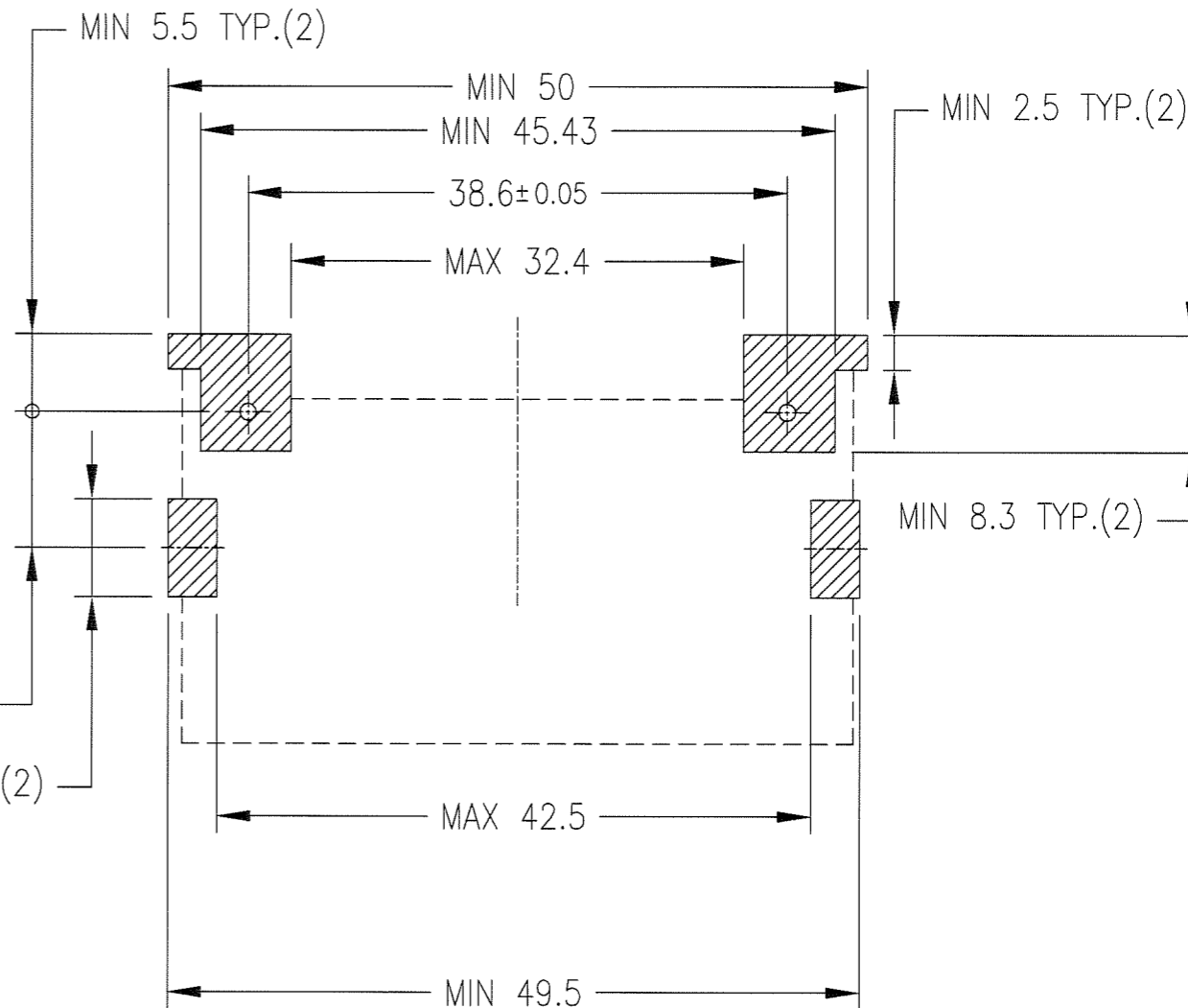


Copyright FCI

PRODUCT NO.	REMARKS
62453-622LF	WITHOUT METAL PLATE(M2 SCREWS) 





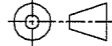
RECOMMENDED P.C.B. LAYOUT



COMPONENT REFLOW KEEP OUT ZONE

NOTE

- 1.PRODUCT SPECIFICATION : 110-404
- 2.PACKAGING SPECIFICATION : GES-14-620
- 3.SOLDER TAIL CO-PLANARITY : MAX 0.1
- 4, FOR LEAD FREE P/N, THE PRODUCT MEETS EUROPEAN UNION DIRECTIVES AND OTHER COUNTRY REGULATIONS AS DESCRIBED IN GS-22-008.
-  5.THE HOUSING WILL WITHSTAND EXPOSURE TO 260°C PEAK TEMPERATURE FOR 10 SECONDS IN A CONVENTION, INTRA-RED OR VAPOR PHASE REFLOW OVEN.
-  6.MEASURED AT THE BOTTOM.

mat'l. code ---				surface ISO 1302 <input checked="" type="checkbox"/>		tolerance ISO 406 ISO 1101		projection 		product family 5AZF - CF HEADER		CODE JP
ltr	description	ecn no	dr	date	tolerances unless otherwise specified		mm		title COMPACT FLASH HDR TOP MOUNT			
A	RELEASED	J05-0357	M.H	6/16/05	angles	linear	0.X	±0.3	scale 2:1			
B	REVISED	J05-0748	R.S	10/31/05			0.XX	±0.3				
C	REVISED	J06-0315	R.S	8/1/06	0°±2'		0.XXX	±0.3	dwg no			
D	REVISED	J06-0399	R.S	10/20/06	dr	S.WATANABE	7/28/08	sheet 8 of 8		size		
E	REVISED	J08-0316	S.W	7/28/08	enr	S.WATANABE	7/28/08	62453		A3		
sheet index		revision sheet		chr		appd		type		Product Customer Drawing		Rev.
												E