

Future Technology Devices International Limited Datasheet CleO-Camera Module



1 Introduction

The CleO-Camera module is a camera accessory for the *CleO* series – the smart TFT display for Arduino. It consists of an OV5640 sensor module and Flash LEDs. The OV5640 sensor is a low voltage, high-performance, 1/4-inch 5 megapixel CMOS image sensor that provides the full functionality of a single chip 5 megapixel (2592×1944) camera using OmniBSI™ technology in a small footprint package. It is controlled through the standard Serial Camera Control Bus (SCCB) interface.

The CleO-camera module is supplied with a standard 24 Pin 0.5mm pitch FFC cable.

1.1 Features

- 1.4 μm x 1.4 μm pixel with OmniBSI™ technology for high performance (high sensitivity, low crosstalk, low noise, improved quantum efficiency)
- Optical size 1/4"
- Embedded 1.5V regulator for core power
- On-board regulator for VDDA, VDDIO, only 3V3 supply needed
- Support for output format: RAW RGB, RGB565/555/444, YUV422/420, YCbCr422 and compression
- Image quality control: color saturation, hue, gamma, sharpness (edge enhancement), lens correction, defective pixel cancelling and noise cancelling
- Support for anti-shake
- Standard SCCB interface
- In built Flash light LED
- 24 pin 0.5mm pitch FFC cable interface

Neither the whole nor any part of the information contained in, or the product described in this manual, may be adapted or reproduced in any material or electronic form without the prior written consent of the copyright holder. This product and its documentation are supplied on an as-is basis and no warranty as to their suitability for any particular purpose is either made or implied. Future Technology Devices International Ltd will not accept any claim for damages howsoever arising as a result of use or failure of this product. Your statutory rights are not affected. This product or any variant of it is not intended for use in any medical appliance, device or system in which the failure of the product might reasonably be expected to result in personal injury. This document provides preliminary information that may be subject to change without notice. No freedom to use patents or other intellectual property rights is implied by the publication of this document. Future Technology Devices International Ltd, Unit 1, 2 Seaward Place, Centurion Business Park, Glasgow G4 1 1HH United Kingdom. Scotland Registered Company Number: SC 136640

2 Ordering Information

Part No.	Description
CleO-CAM1	CleO-camera module, 5M Pixel HD CMOS camera module with adaptor board and FPC Flex

Table of Contents

1	Introduction	1
1.1	Features	1
2	Ordering Information	2
3	Pin Out and Signal Description	4
3.1	Module Description	4
3.2	Module Interface Signal Description	4
4	Devices Characteristics and Ratings.....	6
4.1	Electrical Specification	6
4.2	Sensor Key Specification	7
5	Board Schematic.....	8
6	Mechanical Dimensions	9
7	Contact Information.....	10
	Appendix A – References	11
	Document References	11
	Acronyms and Abbreviations	11
	Appendix B - List of Figures and Tables	12
	List of Tables	12
	List of Figures	12
	Appendix C – Revision History.....	13

3 Pin Out and Signal Description

3.1 Module Description

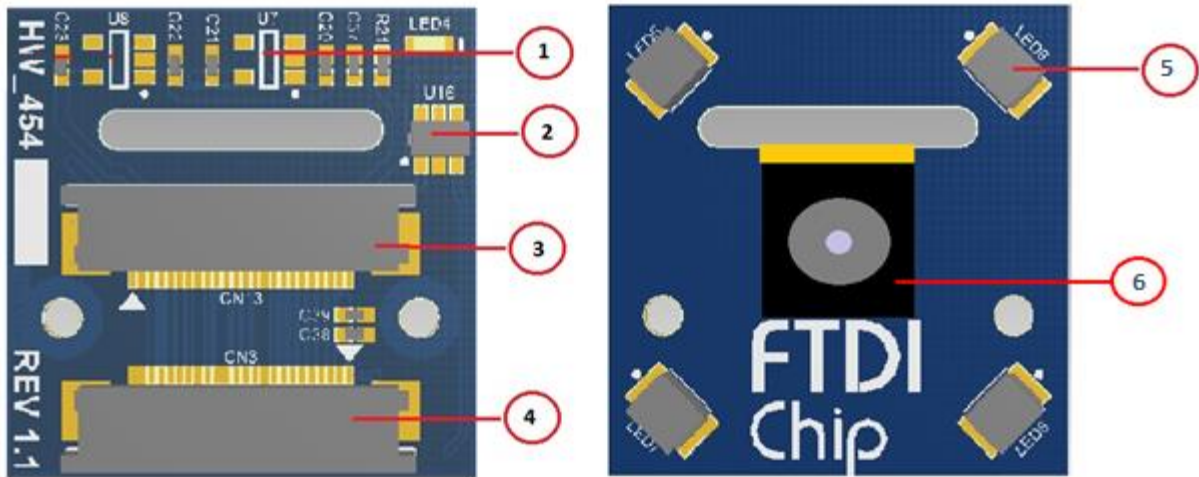


Figure 1 – Camera Module Features

No	Feature	Reference Designator
1	2.8V fixed voltage LDO	U7
2	LED driver	U16
3	24pin 0.5 mm pitch FFC connector interface to OV5640 module	CN13
4	24pin 0.5 mm pitch FFC connector interface to <i>CleO</i>	CN3
5	White LED	LED5, LED6, LED7, LED8
6	OV5640 camera module	-

Table 1 - Camera Module Features & Description

3.2 Module Interface Signal Description

The pin description of **CN3** is given in **Table 2**.

Pin No	Pin Name	Type	Description
1	PWM0	Input	Pulse Width Modulation to control LED brightness
2	CAM_5V	Power	5V Supply
3	CAM_D2	Output	Pixel Data Output 2
4	CAM_D1	Output	Pixel Data Output 1
5	CAM_D3	Output	Pixel Data Output 3

Pin No	Pin Name	Type	Description
6	CAM_D0	Output	Pixel Data Output 0
7	CAM_D4	Output	Pixel Data Output 4
8	CAM_PCLK	Output	Pixel Clock Output from Sensor
9	CAM_D5	Output	Pixel Data Output 5
10	GND	Ground	Power Ground
11	CAM_D6	Output	Pixel Data Output 6
12	CAM_XCLK	Input	Master Clock into Sensor
13	CAM_D7	Output	Pixel Data Output 7
14	CAM_3V3	Power	3V3 Supply
15	CAM_3V3	Power	3V3 Supply
16	CAM_HD	Output	Active High: Line/Data Valid; indicates active pixels
17	CAM_PWDN	Input	Camera Power Down, active High <ul style="list-style-type: none"> • Always pull low enable the sensor
18	CAM_VD	Output	Active High: Frame Valid; indicates active frame
19	RESETn	Input	Camera Reset, Active low
20	I2C0_SCL	Input	Two-Wire Serial Interface Clock
21	CAM_5V	Power	5V Supply
22	I2C0_SDA	Bi-Directional	Two-Wire Serial Interface Data I/O
23	GND	Ground	Power Ground
24	GND	Ground	Power Ground

Table 2 - CN3 Pin Description

4 Devices Characteristics and Ratings

4.1 Electrical Specification

Parameter	Value	Unit	Conditions
Storage Temperature	-40°C to 95°C	Degrees C	
Ambient Operating Temperature (Power Applied)	-30°C to 70°C	Degrees C	

Table 3 - Temperature Parameter

DC Characteristics (Ambient Temperature = -30°C to +70°C)

Parameter	Description	Minimum	Typical	Maximum	Units	Conditions
V _{dc}	5V DC input	4.75		5.25	V	
V _{dc}	3V3 DC input	3.0	3.3	3.6	V	
V _{ih}	Input high voltage	1.26			V	
V _{il}	Input low voltage			0.54	V	
V _{oh}	output high voltage	1.62			V	
V _{ol}	output low voltage			0.18	V	

Table 4 - Operating Voltage and Current

4.2 Sensor Key Specification

key specifications (typical)

- **active array size:** 2592 x 1944
- **power supply:**
 - core: 1.5V \pm 5% (with embedded 1.5V regulator)
 - analog: 2.6 ~ 3.0V (2.8V typical)
 - I/O: 1.8V / 2.8V
- **power requirements:**
 - active: 140 mA
 - standby: 20 μ A
- **temperature range:**
 - operating: -30°C to 70°C junction temperature
 - stable image: 0°C to 50°C junction temperature
- **output formats:** 8-/10-bit RGB RAW output
- **lens size:** 1/4"
- **lens chief ray angle:** 24°
- **input clock frequency:** 6~27 MHz
- **max S/N ratio:** 36 dB (maximum)
- **dynamic range:** 68 dB @ 8x gain
- **maximum image transfer rate:**
 - QSXGA (2592x1944): 15 fps
 - 1080p: 30 fps
 - 1280x960: 45 fps
 - 720p: 60 fps
 - VGA (640x480): 90 fps
 - QVGA (320x240): 120 fps
- **sensitivity:** 600 mV/Lux-sec
- **shutter:** rolling shutter / frame exposure
- **maximum exposure interval:** 1964 x t_{ROW}
- **pixel size:** 1.4 μ m x 1.4 μ m
- **dark current:** 8 mV/s @ 60°C junction temperature
- **image area:** 3673.6 μ m x 2738.4 μ m
- **package dimensions:** 5985 μ m x 5835 μ m

Figure 2- Sensor Key Specifications

5 Board Schematic

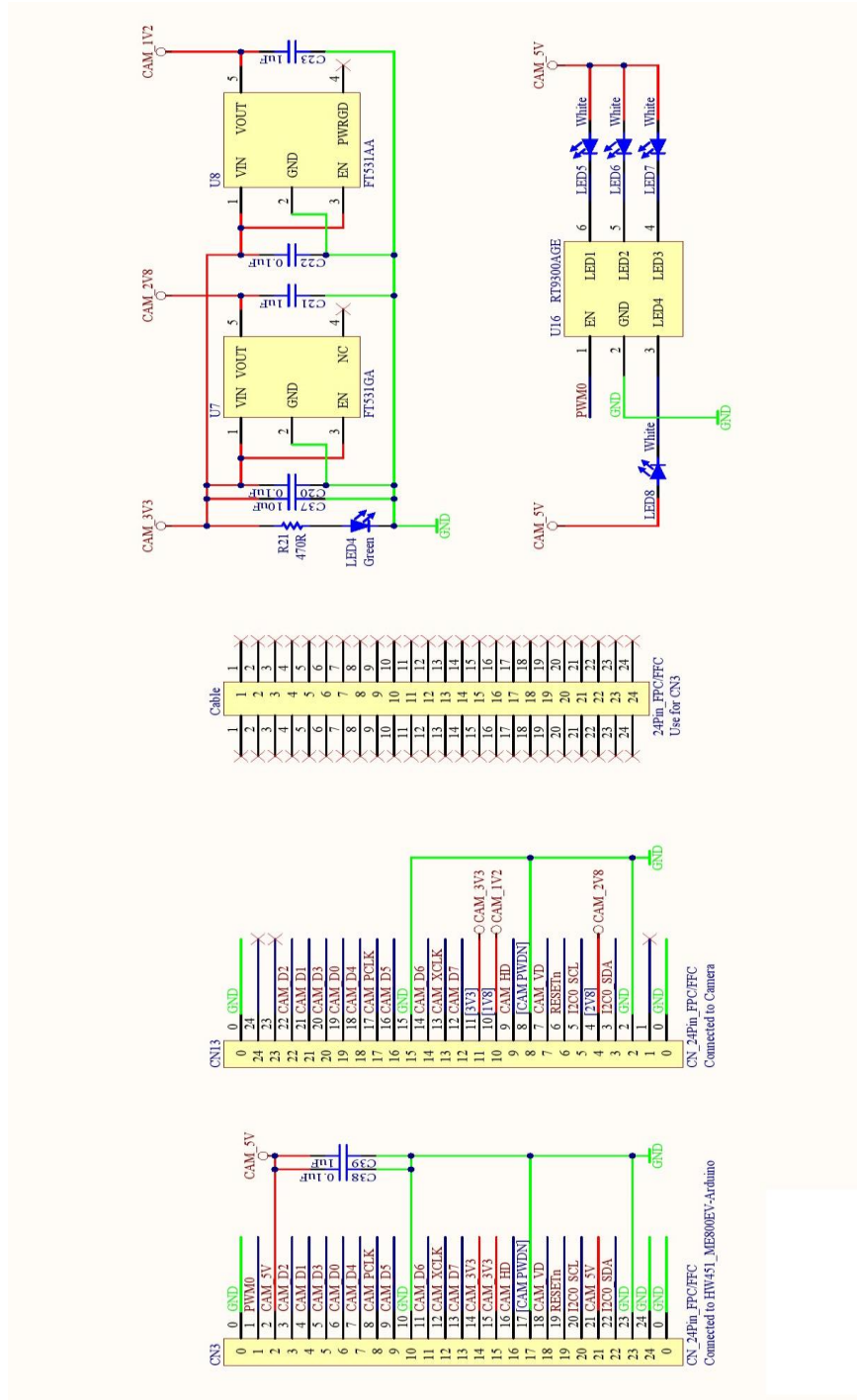


Figure 3 - Camera Schematic

6 Mechanical Dimensions

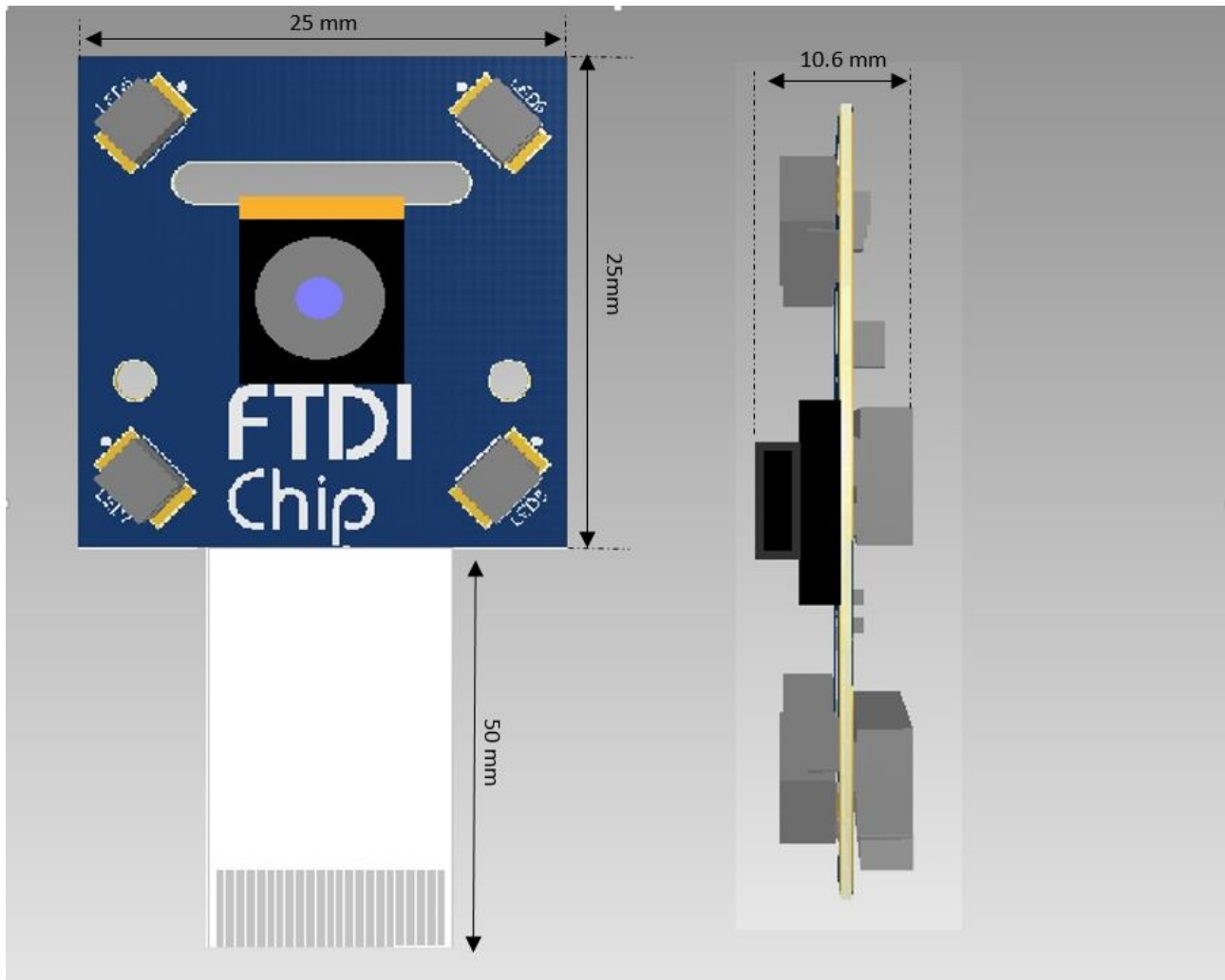


Figure 4 - CleO - Camera Module Dimensions

7 Contact Information

Head Office – Glasgow, UK

Future Technology Devices International Limited
Unit 1, 2 Seaward Place, Centurion Business Park
Glasgow G41 1HH
United Kingdom
Tel: +44 (0) 141 429 2777
Fax: +44 (0) 141 429 2758

E-mail (Sales) sales1@ftdichip.com
E-mail (Support) support1@ftdichip.com
E-mail (General Enquiries) admin1@ftdichip.com

Branch Office – Tigard, Oregon, USA

Future Technology Devices International Limited (USA)
7130 SW Fir Loop
Tigard, OR 97223-8160
USA
Tel: +1 (503) 547 0988
Fax: +1 (503) 547 0987

E-mail (Sales) us.sales@ftdichip.com
E-mail (Support) us.support@ftdichip.com
E-mail (General Enquiries) us.admin@ftdichip.com

Branch Office – Taipei, Taiwan

Future Technology Devices International Limited (Taiwan)
2F, No. 516, Sec. 1, NeiHu Road
Taipei 114
Taiwan, R.O.C.
Tel: +886 (0) 2 8797 1330
Fax: +886 (0) 2 8751 9737

E-mail (Sales) tw.sales1@ftdichip.com
E-mail (Support) tw.support1@ftdichip.com
E-mail (General Enquiries) tw.admin1@ftdichip.com

Branch Office – Shanghai, China

Future Technology Devices International Limited (China)
Room 1103, No. 666 West Huaihai Road,
Shanghai, 200052
China
Tel: +86 21 62351596
Fax: +86 21 62351595

E-mail (Sales) cn.sales@ftdichip.com
E-mail (Support) cn.support@ftdichip.com
E-mail (General Enquiries) cn.admin@ftdichip.com

Web Site

<http://ftdichip.com>

Distributor and Sales Representatives

Please visit the Sales Network page of the [FTDI Web site](#) for the contact details of our distributor(s) and sales representative(s) in your country.

System and equipment manufacturers and designers are responsible to ensure that their systems, and any Future Technology Devices International Ltd (FTDI) devices incorporated in their systems, meet all applicable safety, regulatory and system-level performance requirements. All application-related information in this document (including application descriptions, suggested FTDI devices and other materials) is provided for reference only. While FTDI has taken care to assure it is accurate, this information is subject to customer confirmation, and FTDI disclaims all liability for system designs and for any applications assistance provided by FTDI. Use of FTDI devices in life support and/or safety applications is entirely at the user's risk, and the user agrees to defend, indemnify and hold harmless FTDI from any and all damages, claims, suits or expense resulting from such use. This document is subject to change without notice. No freedom to use patents or other intellectual property rights is implied by the publication of this document. Neither the whole nor any part of the information contained in, or the product described in this document, may be adapted or reproduced in any material or electronic form without the prior written consent of the copyright holder. Future Technology Devices International Ltd, Unit 1, 2 Seaward Place, Centurion Business Park, Glasgow G41 1HH, United Kingdom. Scotland Registered Company Number: SC136640

Appendix A – References

Document References

For module documentations, please refer to URL below :

OV5640 datasheet: [OV5640 Datasheet](#)

LDO 2.8V Fixed Voltage datasheet: [FT531GA Datasheet](#)

Acronyms and Abbreviations

Terms	Description
DC	Direct Current
LED	Light-emitting diode
PWM	Pulse Width Modulation
SCCB	Serial Camera Control Bus
TFT	Thin Film Translator
FFC/FPC	Flexible Flat Cable/Flexible Printed Circuit

Appendix B - List of Figures and Tables

List of Tables

Table 1 - Camera Module Features & Description	4
Table 2 - CN3 Pin Description	5
Table 3 - Temperature Parameter.....	6
Table 4 - Operating Voltage and Current.....	6

List of Figures

Figure 1 - Camera Module Features.....	4
Figure 2- Sensor Key Specifications	7
Figure 3 - Camera Schematic	8
Figure 4 - <i>CleO</i> - Camera Module Dimensions	9

Appendix C – Revision History

Document Title: CleO-Camera Module Datasheet
Document Reference No.: FT_001308
Clearance No.: FTDI# 494
Product Page: <http://www.ftdichip.com/Products/Modules/CleO.htm>
Document Feedback: [Send Feedback](#)

Revision	Changes	Date
Version 1.0	Initial Release	2016-04-20