



Is Now Part of



**ON Semiconductor®**

To learn more about ON Semiconductor, please visit our website at  
[www.onsemi.com](http://www.onsemi.com)

ON Semiconductor and the ON Semiconductor logo are trademarks of Semiconductor Components Industries, LLC dba ON Semiconductor or its subsidiaries in the United States and/or other countries. ON Semiconductor owns the rights to a number of patents, trademarks, copyrights, trade secrets, and other intellectual property. A listing of ON Semiconductor's product/patent coverage may be accessed at [www.onsemi.com/site/pdf/Patent-Marking.pdf](http://www.onsemi.com/site/pdf/Patent-Marking.pdf). ON Semiconductor reserves the right to make changes without further notice to any products herein. ON Semiconductor makes no warranty, representation or guarantee regarding the suitability of its products for any particular purpose, nor does ON Semiconductor assume any liability arising out of the application or use of any product or circuit, and specifically disclaims any and all liability, including without limitation special, consequential or incidental damages. Buyer is responsible for its products and applications using ON Semiconductor products, including compliance with all laws, regulations and safety requirements or standards, regardless of any support or applications information provided by ON Semiconductor. "Typical" parameters which may be provided in ON Semiconductor data sheets and/or specifications can and do vary in different applications and actual performance may vary over time. All operating parameters, including "Typicals" must be validated for each customer application by customer's technical experts. ON Semiconductor does not convey any license under its patent rights nor the rights of others. ON Semiconductor products are not designed, intended, or authorized for use as a critical component in life support systems or any FDA Class 3 medical devices or medical devices with a same or similar classification in a foreign jurisdiction or any devices intended for implantation in the human body. Should Buyer purchase or use ON Semiconductor products for any such unintended or unauthorized application, Buyer shall indemnify and hold ON Semiconductor and its officers, employees, subsidiaries, affiliates, and distributors harmless against all claims, costs, damages, and expenses, and reasonable attorney fees arising out of, directly or indirectly, any claim of personal injury or death associated with such unintended or unauthorized use, even if such claim alleges that ON Semiconductor was negligent regarding the design or manufacture of the part. ON Semiconductor is an Equal Opportunity/Affirmative Action Employer. This literature is subject to all applicable copyright laws and is not for resale in any manner.

## 74ALVC16244

### Low Voltage 16-Bit Buffer/Line Driver with 3.6V Tolerant Inputs and Outputs

#### General Description

The ALVC16244 contains sixteen non-inverting buffers with 3-STATE outputs to be employed as a memory and address driver, clock driver, or bus oriented transmitter/receiver. The device is nibble (4-bit) controlled. Each nibble has separate 3-STATE control inputs which can be shorted together for full 16-bit operation.

The 74ALVC16244 is designed for low voltage (1.65V to 3.6V)  $V_{CC}$  applications with I/O capability up to 3.6V.

The 74ALVC16244 is fabricated with an advanced CMOS technology to achieve high speed operation while maintaining low CMOS power dissipation.

#### Features

- 1.65V–3.6V  $V_{CC}$  supply operation
- 3.6V tolerant inputs and outputs
- $t_{PD}$ 
  - 3.0 ns max for 3.0V to 3.6V  $V_{CC}$
  - 3.5 ns max for 2.3V to 2.7V  $V_{CC}$
  - 6.0 ns max for 1.65V to 1.95V  $V_{CC}$
- Power-off high impedance inputs and outputs
- Supports live insertion and withdrawal (Note 1)
- Uses patented noise/EMI reduction circuitry
- Latch-up conforms to JEDEC JED98
- ESD performance:
  - Human body model > 2000V
  - Machine model > 200V
- Also packaged in plastic Fine-Pitch Ball Grid Array (FBGA)

**Note 1:** To ensure the high-impedance state during power up or power down,  $\overline{OE}$  should be tied to  $V_{CC}$  through a pull-up resistor; the minimum value of the resistor is determined by the current-sourcing capability of the driver.

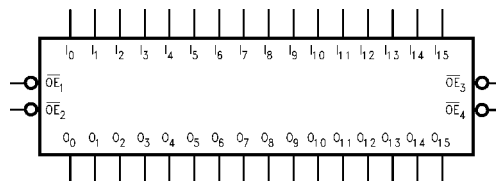
#### Ordering Code:

| Order Number               | Package Number | Package Description   |
|----------------------------|----------------|---|
| 74ALVC16244GX<br>(Note 2)  | BGA54A         | 54-Ball Fine-Pitch Ball Grid Array (FBGA), JEDEC MO-205, 5.5mm Wide [Tape and Reel] |
| 74ALVC16244MTD<br>(Note 3) | MTD48          | 48-Lead Thin Shrink Small Outline Package (TSSOP), JEDEC MO-153, 6.1mm Wide         |

**Note 2:** BGA package available in Tape and Reel only.

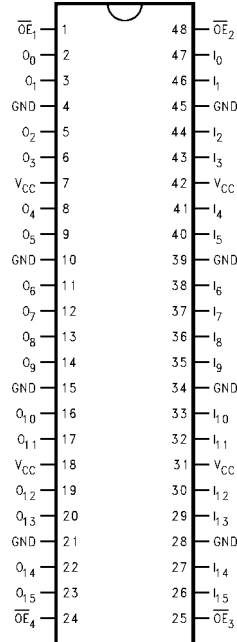
**Note 3:** Devices also available in Tape and Reel. Specify by appending the suffix letter "X" to the ordering code.

#### Logic Symbol

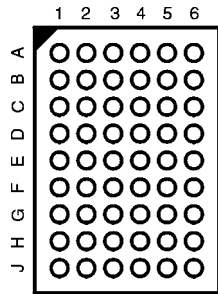


### Connection Diagrams

Pin Assignment for TSSOP



Pin Assignment for FBGA



(Top Thru View)

### Pin Descriptions

| Pin Names         | Description                      |
|-------------------|----------------------------------|
| $\overline{OE}_n$ | Output Enable Input (Active LOW) |
| $I_0-I_{15}$      | Inputs                           |
| $O_0-O_{15}$      | Outputs                          |
| NC                | No Connect                       |

### FBGA Pin Assignments

|          | 1        | 2        | 3                 | 4                 | 5        | 6        |
|----------|----------|----------|-------------------|-------------------|----------|----------|
| <b>A</b> | $O_0$    | NC       | $\overline{OE}_1$ | $\overline{OE}_2$ | NC       | $I_0$    |
| <b>B</b> | $O_2$    | $O_1$    | NC                | NC                | $I_1$    | $I_2$    |
| <b>C</b> | $O_4$    | $O_3$    | $V_{CC}$          | $V_{CC}$          | $I_3$    | $I_4$    |
| <b>D</b> | $O_6$    | $O_5$    | GND               | GND               | $I_5$    | $I_6$    |
| <b>E</b> | $O_8$    | $O_7$    | GND               | GND               | $I_7$    | $I_8$    |
| <b>F</b> | $O_{10}$ | $O_9$    | GND               | GND               | $I_9$    | $I_{10}$ |
| <b>G</b> | $O_{12}$ | $O_{11}$ | $V_{CC}$          | $V_{CC}$          | $I_{11}$ | $I_{12}$ |
| <b>H</b> | $O_{14}$ | $O_{13}$ | NC                | NC                | $I_{13}$ | $I_{14}$ |
| <b>J</b> | $O_{15}$ | NC       | $\overline{OE}_4$ | $\overline{OE}_3$ | NC       | $I_{15}$ |

### Truth Tables

| Inputs            |           | Outputs   |
|-------------------|-----------|-----------|
| $\overline{OE}_1$ | $I_0-I_3$ | $O_0-O_3$ |
| L                 | L         | L         |
| L                 | H         | H         |
| H                 | X         | Z         |

| Inputs            |              | Outputs      |
|-------------------|--------------|--------------|
| $\overline{OE}_3$ | $I_8-I_{11}$ | $O_8-O_{11}$ |
| L                 | L            | L            |
| L                 | H            | H            |
| H                 | X            | Z            |

| Inputs            |           | Outputs   |
|-------------------|-----------|-----------|
| $\overline{OE}_2$ | $I_4-I_7$ | $O_4-O_7$ |
| L                 | L         | L         |
| L                 | H         | H         |
| H                 | X         | Z         |

| Inputs            |                 | Outputs         |
|-------------------|-----------------|-----------------|
| $\overline{OE}_4$ | $I_{12}-I_{15}$ | $O_{12}-O_{15}$ |
| L                 | L               | L               |
| L                 | H               | H               |
| H                 | X               | Z               |

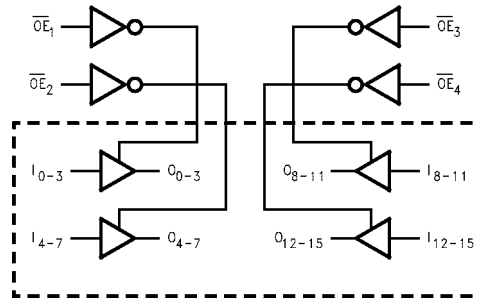
H = HIGH Voltage Level  
 L = LOW Voltage Level  
 X = Immaterial (HIGH or LOW, inputs may not float)  
 Z = High Impedance

## Functional Description

The 74ALVC16244 contains sixteen non-inverting buffers with 3-STATE outputs. The device is nibble (4 bits) controlled with each nibble functioning identically, but independent of each other. The control pins may be shorted together to obtain full 16-bit operation. The 3-STATE out-

puts are controlled by an Output Enable ( $\overline{OE}_n$ ) input. When  $\overline{OE}_n$  is LOW, the outputs are in the 2-state mode. When  $\overline{OE}_n$  is HIGH, the standard outputs are in the high impedance mode but this does not interfere with entering new data into the inputs.

## Logic Diagram



**Absolute Maximum Ratings** (Note 4)

|   |                          |
|---|--------------------------|
| Supply Voltage ( $V_{CC}$ )                                     | -0.5V to +4.6V           |
| DC Input Voltage ( $V_I$ )                                      | -0.5V to 4.6V            |
| Output Voltage ( $V_O$ ) (Note 5)                               | -0.5V to $V_{CC} + 0.5V$ |
| DC Input Diode Current ( $I_{IK}$ )                             |                          |
| $V_I < 0V$  | -50 mA                   |
| DC Output Diode Current ( $I_{OK}$ )                            |                          |
| $V_O < 0V$  | -50 mA                   |
| DC Output Source/Sink Current<br>( $I_{OH}/I_{OL}$ )            | ±50 mA                   |
| DC $V_{CC}$ or GND Current per<br>Supply Pin ( $I_{CC}$ or GND) | ±100 mA                  |
| Storage Temperature Range ( $T_{STG}$ )                         | -65°C to +150°C          |

**Recommended Operating Conditions** (Note 6)

|   |                |
|---|----------------|
| Power Supply                                    |                |
| Operating                                       | 1.65V to 3.6V  |
| Input Voltage ( $V_I$ )                         | 0V to $V_{CC}$ |
| Output Voltage ( $V_O$ )                        | 0V to $V_{CC}$ |
| Free Air Operating Temperature ( $T_A$ )        | -40°C to +85°C |
| Minimum Input Edge Rate ( $\Delta t/\Delta V$ ) |                |
| $V_{IN} = 0.8V$ to $2.0V$ , $V_{CC} = 3.0V$     | 10 ns/V        |

**Note 4:** The Absolute Maximum Ratings are those values beyond which the safety of the device cannot be guaranteed. The device should not be operated at these limits. The parametric values defined in the Electrical Characteristics tables are not guaranteed at the Absolute Maximum Ratings. The "Recommended Operating Conditions" table will define the conditions for actual device operation.

**Note 5:**  $I_O$  Absolute Maximum Rating must be observed, limited to 4.6V.

**Note 6:** Floating or unused control inputs must be held HIGH or LOW.

**DC Electrical Characteristics**

| Symbol          | Parameter                      | Conditions  | $V_{CC}$<br>(V)                                | Min   | Max                                      | Units |
|-----------------|--------------------------------|---|--|---|--|-------|
| $V_{IH}$        | HIGH Level Input Voltage       |   | 1.65 - 1.95<br>2.3 - 2.7<br>2.7 - 3.6          | $0.65 \times V_{CC}$<br>1.7<br>2.0              |  | V     |
| $V_{IL}$        | LOW Level Input Voltage        |   | 1.65 - 1.95<br>2.3 - 2.7<br>2.7 - 3.6          |   | $0.35 \times V_{CC}$<br>0.7<br>0.8       | V     |
| $V_{OH}$        | HIGH Level Output Voltage      | $I_{OH} = -100 \mu A$<br>$I_{OH} = -4 \text{ mA}$<br>$I_{OH} = -6 \text{ mA}$<br>$I_{OH} = -12 \text{ mA}$<br>$I_{OH} = -24 \text{ mA}$ | 1.65 - 3.6<br>1.65<br>2.3<br>2.7<br>3.0<br>3.0 | $V_{CC} - 0.2$<br>1.2<br>2.0<br>1.7<br>2.2<br>2 |  | V     |
| $V_{OL}$        | LOW Level Output Voltage       | $I_{OL} = 100 \mu A$<br>$I_{OL} = 4 \text{ mA}$<br>$I_{OL} = 6 \text{ mA}$<br>$I_{OL} = 12 \text{ mA}$<br>$I_{OL} = 24 \text{ mA}$      | 1.65 - 3.6<br>1.65<br>2.3<br>2.7<br>3.0        |   | 0.2<br>0.45<br>0.4<br>0.7<br>0.4<br>0.55 | V     |
| $I_I$           | Input Leakage Current          | $0 \leq V_I \leq 3.6V$  | 3.6  |   | ±5.0                                     | μA    |
| $I_{OZ}$        | 3-STATE Output Leakage         | $0 \leq V_O \leq 3.6V$  | 3.6  |   | ±10                                      | μA    |
| $I_{CC}$        | Quiescent Supply Current       | $V_I = V_{CC}$ or GND, $I_O = 0$  | 3.6  |   | 40                                       | μA    |
| $\Delta I_{CC}$ | Increase in $I_{CC}$ per Input | $V_{IH} = V_{CC} - 0.6V$  | 3 - 3.6  |   | 750                                      | μA    |

## AC Electrical Characteristics

| Symbol             | Parameter           | $T_A = -40^{\circ}\text{C to } +85^{\circ}\text{C}, R_L = 500\Omega$ |     |                        |     |  |     |   |     | Units |
|--------------------|---------------------|--|-----|------------------------|-----|--|-----|---|-----|-------|
|                    |                     | $C_L = 50\text{ pF}$   |     |                        |     | $C_L = 30\text{ pF}$                   |     |   |     |       |
|                    |                     | $V_{CC} = 3.3\text{V} \pm 0.3\text{V}$                               |     | $V_{CC} = 2.7\text{V}$ |     | $V_{CC} = 2.5\text{V} \pm 0.2\text{V}$ |     | $V_{CC} = 1.8\text{V} \pm 0.15\text{V}$ |     |       |
|                    |                     | Min  | Max | Min                    | Max | Min                                    | Max | Min                                     | Max |       |
| $t_{PHL}, t_{PLH}$ | Propagation Delay   | 1.3  | 3   | 1.5                    | 3.5 | 1.0                                    | 3.0 | 1.5                                     | 6.0 | ns    |
| $t_{PZL}, t_{PZH}$ | Output Enable Time  | 1.3  | 4.0 | 1.5                    | 4.6 | 1.0                                    | 4.1 | 1.5                                     | 8.2 | ns    |
| $t_{PLZ}, t_{PHZ}$ | Output Disable Time | 1.3  | 4.0 | 1.5                    | 4.3 | 1.0                                    | 3.8 | 1.5                                     | 6.8 | ns    |

## Capacitance

| Symbol    | Parameter                     | Conditions                   | $T_A = +25^{\circ}\text{C}$            |         | Units |    |
|-----------|-------------------------------|------------------------------|--|---------|-------|----|
|           |                               |                              | $V_{CC}$                               | Typical |       |    |
| $C_{IN}$  | Input Capacitance             | $V_I = 0\text{V or } V_{CC}$ | 3.3                                    | 6       | pF    |    |
| $C_{OUT}$ | Output Capacitance            | $V_I = 0\text{V or } V_{CC}$ | 3.3                                    | 7       | pF    |    |
| $C_{PD}$  | Power Dissipation Capacitance | Outputs Enabled              | $f = 10\text{ MHz}, C_L = 0\text{ pF}$ | 3.3     | 20    | pF |
|           |                               |                              |  | 2.5     | 20    |    |

## AC Loading and Waveforms

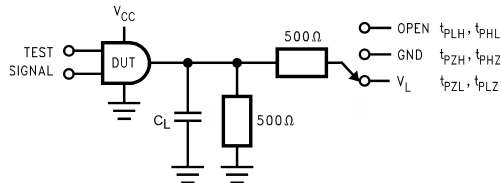


FIGURE 1. AC Test Circuit

Table 1: Values for Figure 1

| TEST               | SWITCH |
|--------------------|--------|
| $t_{PLH}, t_{PHL}$ | Open   |
| $t_{PZL}, t_{PLZ}$ | $V_L$  |
| $t_{PZH}, t_{PHZ}$ | GND    |

Table 2: Variable Matrix  
(Input Characteristics:  $f = 1\text{MHz}$ ;  $t_r = t_f = 2\text{ns}$ ;  $Z_0 = 50\Omega$ )

| Symbol   | $V_{CC}$                      |                        |                               |                                |
|----------|-------------------------------|------------------------|-------------------------------|--------------------------------|
|          | $3.3\text{V} \pm 0.3\text{V}$ | $2.7\text{V}$          | $2.5\text{V} \pm 0.2\text{V}$ | $1.8\text{V} \pm 0.15\text{V}$ |
| $V_{mi}$ | 1.5V                          | 1.5V                   | $V_{CC}/2$                    | $V_{CC}/2$                     |
| $V_{mo}$ | 1.5V                          | 1.5V                   | $V_{CC}/2$                    | $V_{CC}/2$                     |
| $V_X$    | $V_{OL} + 0.3\text{V}$        | $V_{OL} + 0.3\text{V}$ | $V_{OL} + 0.15\text{V}$       | $V_{OL} + 0.15\text{V}$        |
| $V_Y$    | $V_{OH} - 0.3\text{V}$        | $V_{OH} - 0.3\text{V}$ | $V_{OH} - 0.15\text{V}$       | $V_{OH} - 0.15\text{V}$        |
| $V_L$    | 6V                            | 6V                     | $V_{CC} * 2$                  | $V_{CC} * 2$                   |

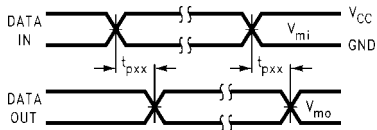


FIGURE 2. Waveform for Inverting and Non-Inverting Functions

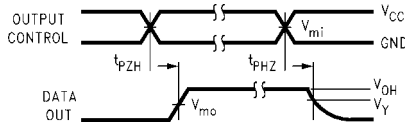


FIGURE 3. 3-STATE Output High Enable and Disable Times for Low Voltage Logic

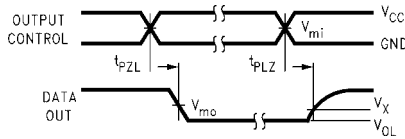
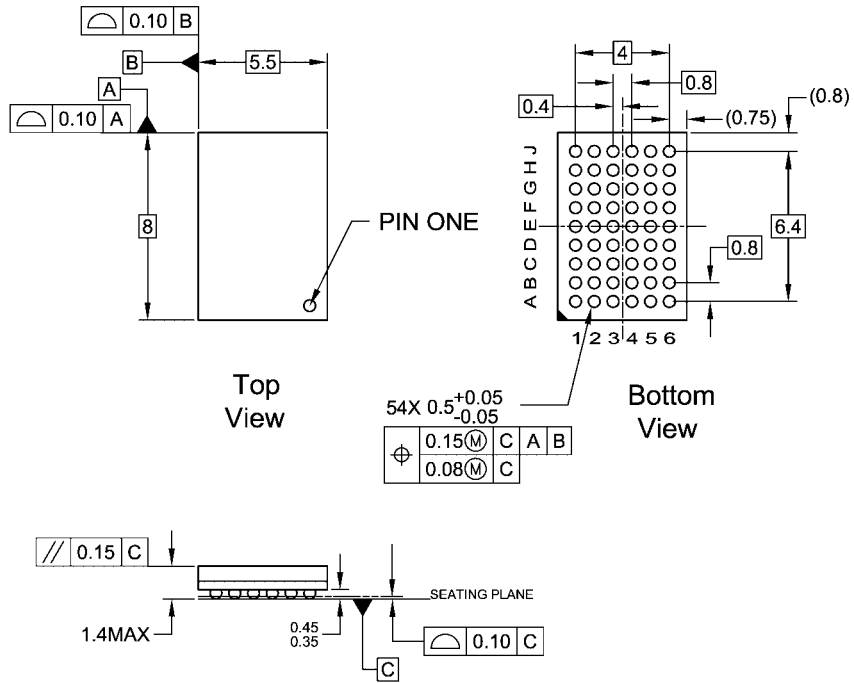


FIGURE 4. 3-STATE Output Low Enable and Disable Times for Low Voltage Logic

**Physical Dimensions** inches (millimeters) unless otherwise noted



NOTES:

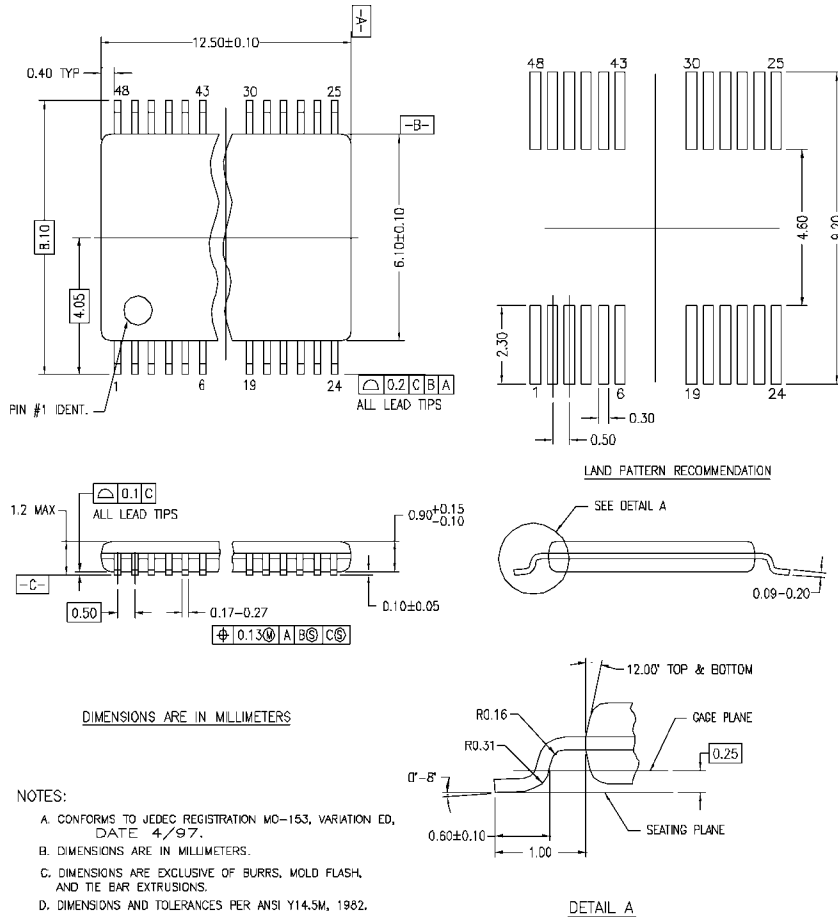
- A. THIS PACKAGE CONFORMS TO JEDEC M0-205
- B. ALL DIMENSIONS IN MILLIMETERS
- C. LAND PATTERN RECOMMENDATION: NSMD (Non Solder Mask Defined)  
.35MM DIA PADS WITH A SOLDERMASK OPENING OF .45MM CONCENTRIC TO PADS
- D. DRAWING CONFORMS TO ASME Y14.5M-1994

BGA54ArevD

**54-Ball Fine-Pitch Ball Grid Array (FBGA), JEDEC M0-205, 5.5mm Wide  
Package Number BGA54A**



**Physical Dimensions** inches (millimeters) unless otherwise noted (Continued)



MTD48REV C

**48-Lead Thin Shrink Small Outline Package (TSSOP), JEDEC MO-153, 6.1mm Wide Package Number MTD48**

Fairchild does not assume any responsibility for use of any circuitry described, no circuit patent licenses are implied and Fairchild reserves the right at any time without notice to change said circuitry and specifications.

**LIFE SUPPORT POLICY**

FAIRCHILD'S PRODUCTS ARE NOT AUTHORIZED FOR USE AS CRITICAL COMPONENTS IN LIFE SUPPORT DEVICES OR SYSTEMS WITHOUT THE EXPRESS WRITTEN APPROVAL OF THE PRESIDENT OF FAIRCHILD SEMICONDUCTOR CORPORATION. As used herein:

1. Life support devices or systems are devices or systems which, (a) are intended for surgical implant into the body, or (b) support or sustain life, and (c) whose failure to perform when properly used in accordance with instructions for use provided in the labeling, can be reasonably expected to result in a significant injury to the user.
2. A critical component in any component of a life support device or system whose failure to perform can be reasonably expected to cause the failure of the life support device or system, or to affect its safety or effectiveness.

[www.fairchildsemi.com](http://www.fairchildsemi.com)

ON Semiconductor and  are trademarks of Semiconductor Components Industries, LLC dba ON Semiconductor or its subsidiaries in the United States and/or other countries. ON Semiconductor owns the rights to a number of patents, trademarks, copyrights, trade secrets, and other intellectual property. A listing of ON Semiconductor's product/patent coverage may be accessed at [www.onsemi.com/site/pdf/Patent-Marking.pdf](http://www.onsemi.com/site/pdf/Patent-Marking.pdf). ON Semiconductor reserves the right to make changes without further notice to any products herein. ON Semiconductor makes no warranty, representation or guarantee regarding the suitability of its products for any particular purpose, nor does ON Semiconductor assume any liability arising out of the application or use of any product or circuit, and specifically disclaims any and all liability, including without limitation special, consequential or incidental damages. Buyer is responsible for its products and applications using ON Semiconductor products, including compliance with all laws, regulations and safety requirements or standards, regardless of any support or applications information provided by ON Semiconductor. "Typical" parameters which may be provided in ON Semiconductor data sheets and/or specifications can and do vary in different applications and actual performance may vary over time. All operating parameters, including "Typicals" must be validated for each customer application by customer's technical experts. ON Semiconductor does not convey any license under its patent rights nor the rights of others. ON Semiconductor products are not designed, intended, or authorized for use as a critical component in life support systems or any FDA Class 3 medical devices or medical devices with a same or similar classification in a foreign jurisdiction or any devices intended for implantation in the human body. Should Buyer purchase or use ON Semiconductor products for any such unintended or unauthorized application, Buyer shall indemnify and hold ON Semiconductor and its officers, employees, subsidiaries, affiliates, and distributors harmless against all claims, costs, damages, and expenses, and reasonable attorney fees arising out of, directly or indirectly, any claim of personal injury or death associated with such unintended or unauthorized use, even if such claim alleges that ON Semiconductor was negligent regarding the design or manufacture of the part. ON Semiconductor is an Equal Opportunity/Affirmative Action Employer. This literature is subject to all applicable copyright laws and is not for resale in any manner.

## PUBLICATION ORDERING INFORMATION

### LITERATURE FULFILLMENT:

Literature Distribution Center for ON Semiconductor  
19521 E. 32nd Pkwy, Aurora, Colorado 80011 USA  
**Phone:** 303-675-2175 or 800-344-3860 Toll Free USA/Canada  
**Fax:** 303-675-2176 or 800-344-3867 Toll Free USA/Canada  
**Email:** [orderlit@onsemi.com](mailto:orderlit@onsemi.com)

**N. American Technical Support:** 800-282-9855 Toll Free  
USA/Canada  
**Europe, Middle East and Africa Technical Support:**  
Phone: 421 33 790 2910  
**Japan Customer Focus Center**  
Phone: 81-3-5817-1050

**ON Semiconductor Website:** [www.onsemi.com](http://www.onsemi.com)  
**Order Literature:** <http://www.onsemi.com/orderlit>  
For additional information, please contact your local  
Sales Representative