



RJ45 AND USB 2.0

Contacts, Tools, and Accessories



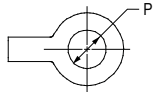
Protective Covers, Attached to Panel for 38999 Type Receptacle Connectors

How To Order							
Sample Part Number	660	-024	M	17	H	5	-01
Series	660 = Series 66						
Cover Type	-024 = metal receptacle cover (see note 2)						
Material and Finish	See Material and Finish Table						
Shell Size	15, 17, 19						
Lanyard Type	D, S, F, G, H, K, R, T, U (See Lanyard Type Table)						
Lanyard Length	Length in inches						
Ring Style Dash No.	(See Table I and II) omit for "SK" slip knot attachment						

MIL-DTL-38999 Type

Table I: Dash No. for Small Ring

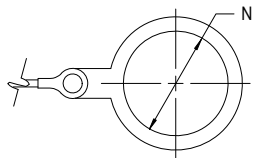
Dash No.	P	Dash No.	P
01	.140 (3.6)	06	.125 (3.2)
02	.182 (4.6)	07	.218 (5.5)
03	.191 (4.9)	09	.156 (4.0)
04	.197 (5.0)	00	no eyelet
05	.167 (4.2)	WS	with strap



For attachment to panel

Table II: Dash No. for Solid Ring

Dash No.	Shell Size	N
19	15	1.141 (29.0)
21	17	1.266 (32.2)
23	19	1.391 (35.3)



SOLID RING (with tab)

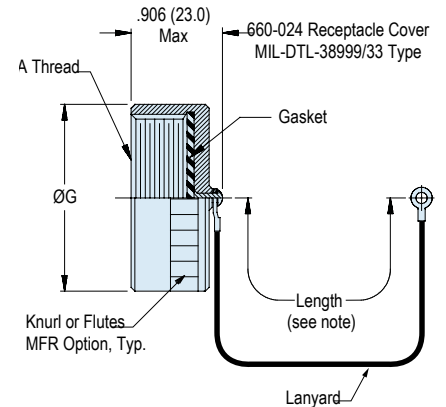
For attachment behind jam nut

Dimensions

Shell Size	A Thread	ØG Max
15	1.0000 - 0.1P-0.3L-TS	1.260 (32.0)
17	1.1875 - 0.1P-0.3L-TS	1.457 (37.0)
19	1.2500 - 0.1P-0.3L-TS	1.535 (39.0)

Lanyard Type

Sym	Attachment
E	Bead chain, cres, passivated, with terminal
E	Link chain, cres, passivated, with clevis terminal
F	Wire rope, nylon jacket w/terminal
G	Nylon rope
H	Wire rope, teflon jacket w/terminal
K	Nylon rope (olive drab color)
N	Attachment omitted
R	Wire rope, pvc jacket w/terminal
T	Wire rope, no jacket, w/terminal
S	#8 Sash chain, cres, passivate
U	Wire rope, polyurethane jacket with terminal
SK	Nylon rope (black) with slip knot



NOTES

1. Length tolerance for Sash Chain (S) is ± 1 link, for all other attachments ± .25.
2. For plug covers contact factory
3. Material and Finish
 - Gasket: Silicone
 - Hardware, Rivet: Stainless Steel/ Passivate

Lanyard Types

Bead Chain (Type D)	Sash Chain (Type S)	Rope (Types F, G, H, K, R, T, U)

Materials and Finishes¹

NF	Aluminum/Cadmium, olive drab
ME	Aluminum/Electroless nickel
MT	Aluminum/ Nickel PTFE
ZR	Aluminum/ Black zinc-nickel
ZI	Stainless Steel/ Passivate

M