



**Series 80 Mighty Mouse  
Contacts and Tools  
Jam Nut Tightening Tools  
Connector Holding Fixtures**

**Spanner Tool for Tightening Series 80 Jam Nuts**

Use these tools to tighten Series 80 jam nuts. 1/4" or 3/8" square drive for use with torque wrenches. Heat-treated steel, nickel plated.



Shell Size	Spanner Tool Part Number					
	Series 800	Series 801	Series 803	Series 804 Style 07	Series 804 Style 00	Series 805
5	600-146-01	600-146-02	600-137-05	600-146-03	600-147-5	—
6	600-146-02	600-146-03	600-137-06	600-146-04	600-147-6	—
7	600-146-03	600-146-05	600-137-07	600-146-06	600-147-7	—
8	600-146-04	600-146-05	600-137-08	600-146-06	600-147-7	600-154-08
9	600-146-05	600-146-06	600-137-09	600-146-07	600-147-9	600-154-09
10	600-146-06	600-146-07	600-137-10	600-146-08	600-147-10	600-154-09
11	—	—	—	—	—	600-154-11
12	600-146-08	—	600-137-12	600-146-10	600-147-12	600-154-12
13	—	600-146-10	—	—	—	—
14	600-146-10	—	600-137-14	600-146-12	600-147-14	—
15	600-146-11	—	600-137-15	600-146-13	600-147-15	600-154-15
16	—	600-146-13	—	—	—	—
17	—	600-146-14	—	—	—	—
18	—	—	—	—	—	600-154-18
19	—	—	—	—	—	600-154-19
21	—	600-146-17	—	—	—	—
23	—	—	—	—	—	600-154-23

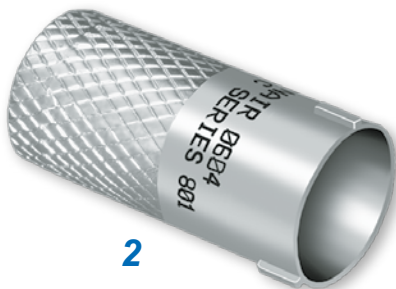
**Connector Holding Tool for Tightening Backshells and Accessories**



1

1 Plug tool for holding Series 80 plug connectors. Heat-treated steel, nickel plated.

2 Receptacle tool for holding Series 80 receptacle connectors. Heat-treated steel, nickel plated.



2

Shell Size	Holding Tool Part Number (Add P or R)								
	Series 800		Series 801		Series 803		Series 804	Series 805	
5	600M005-05	★	600MM005-05	◆	600-140-5	★	600-141-5	■	—
6	600M005-06	★	600MM005-06	◆	600-140-6	★	600-141-6	■	—
7	600M005-07	★	600MM005-07	◆	600-140-7	★	600-141-7	■	—
8	600M005-08	★	600MM005-08	◆	600-140-8	★	600-141-8	■	600-155-8
9	600M005-09	★	600MM005-09	◆	600-140-9	★	600-141-9	■	600-155-9
10	600M005-10	★	600MM005-10	◆	600-140-10	★	600-141-10	■	600-155-10
11	—		—		—		—		600-155-11
12	600M005-12	★	—		600-140-12	★	600-141-12	■	600-155-12
13	—		600MM005-13	◆	—		—		—
14	—		—		600-140-14	★	600-141-14	■	—
15	—		—		600-140-15	★	600-141-15	■	600-155-15
16	—		600MM005-16	◆	—		—		—
17	—		600MM005-17	◆	—		—		—
18	—		—		—		—		600-155-18
19	—		—		—		—		600-155-19
21	—		600MM005-21	◆	—		—		—
23	—		—		—		—		600-155-23

★ Add P for plug holder or R for receptacle holder, followed by polarizing position (N,X,Y,Z).  
 ◆ Add P for plug holder or R for receptacle holder, followed by polarizing position (A,B,C,D).  
 ■ Add P for plug holder or R for receptacle holder.

Dimensions in inches (millimeters) and are subject to change without notice.